

32

September 20, 2024 Letting

Notice to Bidders, Specifications and Proposal



**Illinois Department
of Transportation**

**Contract No. 68J41
TAZEWELL County
Section (35RS-10;(35NRM)RS-1)SW
Route FAP 399
District 4 Construction Funds**

Prepared by

S

Checked by

(Printed by authority of the State of Illinois)



- 1. TIME AND PLACE OF OPENING BIDS.** Electronic bids are to be submitted to the electronic bidding system (iCX-Integrated Contractors Exchange). All bids must be submitted to the iCX system prior to 12:00 p.m. September 20, 2024 prevailing time at which time the bids will be publicly opened from the iCX SecureVault.
- 2. DESCRIPTION OF WORK.** The proposed improvement is identified and advertised for bids in the Invitation for Bids as:

**Contract No. 68J41
TAZEWELL County
Section (35RS-10;(35NRM)RS-1)SW
Route FAP 399
District 4 Construction Funds**

2.746 miles of resurfacing, patching, and ADA improvements on Illinois Route 8 and Business US Route 24 (Washington Rd) in Tazewell County.

- 3. INSTRUCTIONS TO BIDDERS.** (a) This Notice, the invitation for bids, proposal and letter of award shall, together with all other documents in accordance with Article 101.09 of the Standard Specifications for Road and Bridge Construction, become part of the contract. Bidders are cautioned to read and examine carefully all documents, to make all required inspections, and to inquire or seek explanation of the same prior to submission of a bid.

(b) State law, and, if the work is to be paid wholly or in part with Federal-aid funds, Federal law requires the bidder to make various certifications as a part of the proposal and contract. By execution and submission of the proposal, the bidder makes the certification contained therein. A false or fraudulent certification shall, in addition to all other remedies provided by law, be a breach of contract and may result in termination of the contract.
- 4. AWARD CRITERIA AND REJECTION OF BIDS.** This contract will be awarded to the lowest responsive and responsible bidder considering conformity with the terms and conditions established by the Department in the rules, Invitation for Bids and contract documents. The issuance of plans and proposal forms for bidding based upon a prequalification rating shall not be the sole determinant of responsibility. The Department reserves the right to determine responsibility at the time of award, to reject any or all proposals, to readvertise the proposed improvement, and to waive technicalities.

By Order of the
Illinois Department of Transportation

Omer Osman,
Secretary

INDEX
FOR
SUPPLEMENTAL SPECIFICATIONS
AND RECURRING SPECIAL PROVISIONS

Adopted January 1, 2024

This index contains a listing of SUPPLEMENTAL SPECIFICATIONS and frequently used RECURRING SPECIAL PROVISIONS.

ERRATA Standard Specifications for Road and Bridge Construction (Adopted 1-1-22) (Revised 1-1-24)

SUPPLEMENTAL SPECIFICATIONS

<u>Std. Spec. Sec.</u>	<u>Page No.</u>
202 Earth and Rock Excavation	1
204 Borrow and Furnished Excavation	2
207 Porous Granular Embankment	3
211 Topsoil and Compost	4
407 Hot-Mix Asphalt Pavement (Full-Depth)	5
420 Portland Cement Concrete Pavement	6
502 Excavation for Structures	7
509 Metal Railings	8
540 Box Culverts	9
542 Pipe Culverts	29
586 Granular Backfill for Structures	34
630 Steel Plate Beam Guardrail	35
644 High Tension Cable Median Barrier	36
665 Woven Wire Fence	37
782 Reflectors	38
801 Electrical Requirements	40
821 Roadway Luminaires	43
1003 Fine Aggregates	44
1004 Coarse Aggregates	45
1010 Finely Divided Minerals	46
1020 Portland Cement Concrete	47
1030 Hot-Mix Asphalt	48
1061 Waterproofing Membrane System	49
1067 Luminaire	50
1097 Reflectors	57

RECURRING SPECIAL PROVISIONS

The following RECURRING SPECIAL PROVISIONS indicated by an "X" are applicable to this contract and are included by reference:

<u>CHECK SHEET #</u>		<u>PAGE NO.</u>
1	Additional State Requirements for Federal-Aid Construction Contracts	59
2	Subletting of Contracts (Federal-Aid Contracts)	62
3	X EEO	63
4	X Specific EEO Responsibilities Non Federal-Aid Contracts	73
5	X Required Provisions - State Contracts	78
6	Asbestos Bearing Pad Removal	84
7	Asbestos Waterproofing Membrane and Asbestos HMA Surface Removal	85
8	Temporary Stream Crossings and In-Stream Work Pads	86
9	X Construction Layout Stakes	87
10	Use of Geotextile Fabric for Railroad Crossing	90
11	Subsealing of Concrete Pavements	92
12	Hot-Mix Asphalt Surface Correction	96
13	Pavement and Shoulder Resurfacing	98
14	Patching with Hot-Mix Asphalt Overlay Removal	99
15	Polymer Concrete	101
16	Reserved	103
17	Bicycle Racks	104
18	Temporary Portable Bridge Traffic Signals	106
19	Nighttime Inspection of Roadway Lighting	108
20	English Substitution of Metric Bolts	109
21	Calcium Chloride Accelerator for Portland Cement Concrete	110
22	Quality Control of Concrete Mixtures at the Plant	111
23	X Quality Control/Quality Assurance of Concrete Mixtures	119
24	Reserved	135
25	Reserved	136
26	Temporary Raised Pavement Markers	137
27	Restoring Bridge Approach Pavements Using High-Density Foam	138
28	Portland Cement Concrete Inlay or Overlay	141
29	Portland Cement Concrete Partial Depth Hot-Mix Asphalt Patching	145
30	Longitudinal Joint and Crack Patching	148
31	X Concrete Mix Design – Department Provided	150
32	X Station Numbers in Pavements or Overlays	151

TABLE OF CONTENTS

LOCATION OF PROJECT	1
DESCRIPTION OF PROJECT	1
CONSTRUCTION STATION LAYOUT.....	2
CONSTRUCTION LAYOUT RESPONSIBILITY	2
UTILITIES – LOCATIONS/INFORMATION ON PLANS	3
LOCATION OF UNDERGROUND STATE MAINTAINED FACILITIES	3
SEEDING, MINOR AREAS	3
CLEAN EXISTING PAVEMENT EDGE JOINT.....	4
HOT-MIX ASPHALT SURFACE COURSE SURFACE TESTS	4
TEMPORARY SIDEWALKS.....	4
PROTECTION OF FRAMES AND LIDS OF UTILITY STRUCTURES	4
PAVEMENT DRAINAGE AFTER COLD MILLING	5
TRAFFIC CONTROL PLAN	5
INTERIM COMPLETION DATE	6
AGGREGATE QUALITY	7
PCC QMP ELECTRONIC REPORT SUBMITTALS	7
PCC AUTOMATIC BATCHING EQUIPMENT	8
APS EXTENSION BRACKET	8
ACCESSIBLE PEDESTRIAN SIGNALS (APS).....	9
BLENDED FINELY DIVIDED MINERALS (BDE).....	13
PEDESTRIAN PUSH-BUTTON POST.....	13
REMOVAL AND DISPOSAL OF REGULATED SUBSTANCES (PROJECT SPECIFIC).....	13
REBUILD EXISTING HANDHOLE (SPECIAL).....	16
RECTANGULAR RAPID FLASHING BEACON ASSEMBLY (COMPLETE).....	17
RELOCATE EXISTING SIGNAL HEAD	23
VIDEO VEHICLE DETECTION SYSTEM, 3 CAMERA.....	24
VIDEO VEHICLE DETECTION SYSTEM, 4 CAMERA.....	29
UNDERGROUND CONDUIT	34
BITUMINOUS MATERIALS COST ADJUSTMENTS (BDE).....	34
CEMENT, TYPE IL (BDE).....	36
COMPENSABLE DELAY COSTS (BDE)	36
DISADVANTAGED BUSINESS ENTERPRISE PARTICIPATION (BDE)	39
FUEL COST ADJUSTMENT (BDE)	48

HOT-MIX ASPHALT (BDE).....	50
ILLINOIS WORKS APPRENTICESHIP INITIATIVE – STATE FUNDED CONTRACTS (BDE).....	50
MATERIAL TRANSFER DEVICE (BDE).....	51
PERFORMANCE GRADED ASPHALT BINDER (BDE).....	53
PORTLAND CEMENT CONCRETE (BDE).....	57
REMOVAL AND DISPOSAL OF REGULATED SUBSTANCES (BDE).....	58
SEEDING (BDE).....	59
SHORT TERM AND TEMPORARY PAVEMENT MARKINGS (BDE).....	64
SUBCONTRACTOR AND DBE PAYMENT REPORTING (BDE).....	67
SUBCONTRACTOR MOBILIZATION PAYMENTS (BDE).....	68
SUBMISSION OF PAYROLL RECORDS (BDE).....	68
IDOT TRAINING PROGRAM GRADUATE ON-THE-JOB TRAINING SPECIAL PROVISION.....	69
VEHICLE AND EQUIPMENT WARNING LIGHTS (BDE).....	71
WEEKLY DBE TRUCKING REPORTS (BDE).....	71
WORK ZONE TRAFFIC CONTROL DEVICES (BDE).....	72
WORKING DAYS (BDE).....	73

STATE OF ILLINOIS

SPECIAL PROVISIONS

The following Special Provisions supplement the "Standard Specifications for Road and Bridge Construction," adopted January 1, 2022 (revised January 1, 2024), the latest edition of the "Manual on Uniform Traffic Control Devices for Streets and Highways," and the "Manual of Test Procedures for Materials" in effect on the date of invitation for bids, and the Supplemental Specifications and Recurring Special Provisions indicated on the Check Sheet included herein which apply to and govern the construction of FAP Route 399/FAU Route 6776 (IL 8/BUS 24), Section [35RS-10;(35NRM)RS-1]SW, Tazewell County, Contract No. 68J41 and in case of conflict with any part or parts of said Specifications, the said Special Provisions shall take precedence and shall govern.

LOCATION OF PROJECT

This project is located on Illinois Route 8 and Business US Route 24 (Washington Road) in Tazewell County from approximately 600 feet west of Legion Road to Zinser Place.

DESCRIPTION OF PROJECT

The proposed project consists of hot-mix asphalt surface removal, hot-mix asphalt surface course, ADA ramp reconstruction, traffic signal modifications, raised pavement markers, pavement markings, and all related collateral work necessary to complete the project.

CONSTRUCTION STATION LAYOUT

Effective: July 30, 2010

This work shall consist of all labor, materials, and equipment necessary to temporarily stake, maintain, and remove the roadway stationing for all mainline and ramp pavements to be overlaid within the project limits.

Prior to any cold milling or other operations that will destroy the existing stationing stamped in the existing pavement, the Contractor shall have the stationing temporarily marked beyond the edge of shoulder or as directed by the Engineer. Unless otherwise allowed, the stationing shall be legibly written on wooden lathe marked with a ribbon and driven into the ground at 200' (100 meter) intervals. On 2, 3, and 5 lane pavements, the stationing shall be marked on the right edge of pavement in the direction of increasing stationing. On ramp pavements, the stationing shall be marked along the baseline. On multi-lane divided roadways, the stationing shall be marked along the outside edge of shoulder in both directions. The stationing to be used shall be as shown on the plans. The beginning and ending station and location shall be confirmed with the Engineer prior to staking. Once the surface course has been stamped, the lathe shall be removed and disposed of in accordance with the Standard Specifications.

This work will be paid for at the contract unit price per Lump Sum for CONSTRUCTION LAYOUT and no other compensation will be allowed.

CONSTRUCTION LAYOUT RESPONSIBILITY

Effective April 26, 2015 Revised: January 1, 2022

This special provision is included in addition to Check Sheet #9 of the Recurring Special Provisions, Special Provision for Construction Layout Stakes, to clearly define the responsibility of the Contractor for construction layout.

As the Contractor is generating the survey layout model, all roadway elements shall be verified to fit within the final proposed slopes and right-of-way. If the Contractor determines a portion of the plans is incorrect or a portion does not agree with another portion, they shall contact the Engineer to have the problem resolved and additional work, if any, agreed upon. The Contractor shall not proceed until authority is received from the Engineer and problems are resolved. The Engineer shall contact the District Studies and Plans Section if need be.

The Contractor shall set all horizontal control points at the end of construction and provide cross ties in a hardback survey book to the Engineer.

The Contractor shall also set and provide the Engineer with a list of final benchmarks in a hardback survey book at the end of construction for future control.

No additional compensation will be allowed for complying with this Special Provision, but all costs shall be included in the contract Lump Sum price for CONSTRUCTION LAYOUT.

UTILITIES – LOCATIONS/INFORMATION ON PLANS

Effective: November 8, 2013

The locations of existing water mains, gas mains, sewers, electric power lines, telephone lines, and other utilities as shown on the plans are based on field investigation and locations provided by the utility companies, but they are not guaranteed. Unless elevations are shown, all utility locations shown on the cross sections are based on the approximate depth supplied by the utility company. It shall be the Contractor's responsibility to ascertain their exact location from the utility companies and by field inspection.

LOCATION OF UNDERGROUND STATE MAINTAINED FACILITIES

Effective: August 3, 2007 Revised: July 31, 2009

The Contractor shall be responsible for locating existing and proposed IDOT electrical facilities (traffic signal, overhead lighting, Intelligent Transportation System, etc.) prior to performing any work at his/her own expense if required. The Contractor shall also be liable for any damage to IDOT facilities resulting from inaccurate locating.

The Contractor may obtain, on request, plans for existing electrical facilities from the Department.

The Contractor shall also be responsible for locating and providing protection for IDOT facilities during all phases of construction. If at any time the facilities are damaged, the Contractor shall immediately notify the Department and make all necessary arrangements for repair to the satisfaction of the Engineer. This work will not be paid for separately, but shall be included in the contract bid price.

SEEDING, MINOR AREAS

Effective July 1, 1990 Revised April 1, 2019

Seeding, fertilizing, and mulching shall be done in accordance with Article 250 of the Standard Specifications except for the following revisions:

All areas disturbed by the work performed shall be seeded, fertilized, and mulched in accordance with Article 251.03(a). The materials may be purchased locally and placed as directed by the engineer.

The estimated area is approximately 0.10 acre. The seed mixture shall be applied at 100 pounds/acre (110 kg/ha). The mixture shall be one that contains Turf Type Tall Fescue, Creeping Red Fescue, and Kentucky Blue Grass. The Kentucky Blue Grass shall not exceed 50% of the mixture. All seeds shall meet the purity and noxious weed requirements of Article 1081.04 of the Standard Specifications, and be approved by the Engineer.

The fertilizer nutrients shall be applied at a rate of 270 lbs. (300 kg) of actual nutrients per acre (hectare). The fertilizer furnished shall be ready mixed material having a ratio of (1-1-1).

The Contractor shall provide the Engineer with the test results from the seed container and the chemical analysis of the fertilizer nutrients.

The seed, fertilizer, and mulch will not be measured for payment but will be considered included in the cost of PORTLAND CEMENT CONCRETE SIDEWALK 5".

CLEAN EXISTING PAVEMENT EDGE JOINT

Effective January 3, 2000 Revised April 24, 2020

Description: This work shall consist of removing loose material and vegetation present in the existing edge of pavement joint between the pavement and hot-mix asphalt shoulders. Any existing vegetation and other loose material shall be removed from the edge joint and deposited on the roadside in a method acceptable to the Engineer. The existing edge joint shall then be cleaned of any loose material using compressed air. After cleaning, any depressions in the edge joint greater than 1" (25 mm) in depth shall be filled with leveling binder placed and compacted by hand methods.

Basis of Payment: This work shall be paid for in accordance with Article 109.04 of the Standard Specifications.

HOT-MIX ASPHALT SURFACE COURSE SURFACE TESTS

Effective: November 1, 2003 Revised January 1, 2007

The Contractor shall provide a person to operate the straight edge in accordance with Article 406.11 of the Standard Specifications and communicate with IDOT Personnel to minimize the surface course bumps. If surface course bumps cannot be removed at this time, IDOT personnel will record the locations and provide deductions as stated in Article 406.11.

TEMPORARY SIDEWALKS

Effective March 1, 1991 Revised February 1, 1996

Temporary sidewalks may be required at various locations as determined by the Engineer to provide access to and from businesses and to provide continuity for pedestrian traffic. The temporary sidewalks shall be constructed using material of the type and thickness as specified by the Engineer. The work, including the subsequent removal of the temporary sidewalk, will be paid for in accordance with Article 109.04 of the Standard Specifications.

PROTECTION OF FRAMES AND LIDS OF UTILITY STRUCTURES

Effective March 6, 1991 Revised January 1, 2007

This work shall consist of protecting frames and lids of utility structures in the pavement after the adjacent hot-mix asphalt surface has been removed to the required depth by cold milling or by hand methods.

After the area has been swept clean and before the lane is opened to traffic, a hot bituminous mixture shall be placed around the casting, flush with its surface and decreasing to a featheredge in a distance of 4 feet (1.2 m) around the entire surface of the casting. Cold mix or milled material will not be permitted. This mixture shall remain in place until the day surfacing operations are undertaken within the immediate area of the structure. Prior to placing the surface course, the temporary hot-mix asphalt mixture shall be removed and disposed of by the Contractor as specified in Article 202.03 of the Standard Specifications.

The temporary tapers and their removal shall be considered included in the contract unit price per Square Meter (Square Yard) for HOT-MIX ASPHALT SURFACE REMOVAL of the depth specified, and no additional compensation will be allowed.

PAVEMENT DRAINAGE AFTER COLD MILLING

Effective March 15, 1996 Revised November 8, 2019

This work shall consist of cold milling a 1.5" (40 mm) deep and 2' (0.6 m) wide drainage channel through the existing shoulder at locations as directed by the Engineer and replacing the mix after the surface has been placed.

To prevent pooling of water in the milled surface, a drainage channel shall be cut in the shoulder at low spots in superelevated curves and other locations where pooling of water may occur as specified by the Engineer.

After the surface has been placed on the adjacent through lane, the drainage channel shall be primed and then filled with a hot-mix asphalt shoulder mix approved by the Engineer and compacted to the satisfaction of the Engineer.

This work shall not be paid for separately but shall be included in the contract unit price for HOT-MIX ASPHALT SURFACE REMOVAL of the depth specified.

TRAFFIC CONTROL PLAN

Effective: July 11, 2024

Traffic control shall be in accordance with the applicable sections of the "Standard Specifications for Road and Bridge Construction," the applicable guidelines contained in the "Illinois Manual on Uniform Traffic Control Devices for Streets and Highways," these Special Provisions, and any special details and Highway Standards contained herein and in the plans.

Special attention is called to Section 701 and Articles 107.09 and 107.14 of the "Standard Specifications for Road and Bridge Construction" and the following Highway Standards relating to traffic control:

701101	701426	701427	701502	701701
701801	701901	780001	781001	

CHANGEABLE MESSAGE SIGNS

One (1) changeable message sign (CMS) shall be placed in each direction on IL 8/Business US 24 at opposite ends of the project for seven (7) Calendar Days prior to beginning work. This work will be measured and paid for per Calendar Day for Changeable Message Sign which will be payment for each changeable message sign.

WORK RESTRICTIONS:

No excavations may be left open adjacent to a lane of traffic on IL 8/Business US 24.

A minimum of one through lane shall remain open in each direction on IL 8/Business US 24 at all times.

All efforts shall be made to maintain all turning movements at the intersection.

INTERIM COMPLETION DATE

This work shall be done in accordance with Section 108 of the Standard Specifications and as specified herein.

The Contractor shall complete all work associated with the hot-mix asphalt resurfacing of IL 8/Business US 24 and permanent pavement markings as listed below and shown in the plans and have all lanes of traffic open by the interim completion date of **November 30, 2024**.

CODE NO.	PAY ITEM
40600295	POLYMERIZED BITUMINOUS MATERIALS (TACK COAT)
40600982	HOT-MIX ASPHALT SURFACE REMOVAL - BUTT JOINT
40600990	TEMPORARY RAMP
40604160	POLYMERIZED HOT-MIX ASPHALT SURFACE COURSE, IL-9.5, MIX"D", N50
44000156	HOT-MIX ASPHALT SURFACE REMOVAL, 1 3/4"
48102100	AGGREGATE WEDGE SHOULDER, TYPE B
48203004	HOT-MIX ASPHALT SHOULDERS, 1 3/4"
78001100	PAINT PAVEMENT MARKING - LETTERS AND SYMBOLS
78001110	PAINT PAVEMENT MARKING - LINE 4"
78001130	PAINT PAVEMENT MARKING - LINE 6"
78001140	PAINT PAVEMENT MARKING - LINE 8"
78001150	PAINT PAVEMENT MARKING - LINE 12"
78001180	PAINT PAVEMENT MARKING - LINE 24"
78300200	RAISED REFLECTIVE PAVEMENT MARKER REMOVAL
Z0034105	MATERIAL TRANSFER DEVICE

Should the Contractor fail to complete the work associated with the pay items listed above on the interim completion date stipulated or before, then liquidated damages per calendar day will apply according to Article 108.09.

No additional compensation will be given for compliance with the completion date. The cost shall be considered included in the contract.

The traffic signal video detection systems must be installed within 90 days of contract award.

AGGREGATE QUALITY

Effective: July 1, 1990

Revised: April 26, 2013

Coarse aggregate for Granular Embankment Special, Sub-base Granular Material, Aggregate Shoulders, Aggregate Surface and Base Courses, and Erosion Control Aggregate shall conform to Article 1004.04 of the Standard Specifications for Road and Bridge Construction except that all of the following revisions to Article 1004.04(b) shall apply unless the Contractor chooses to use RAP for aggregate shoulders:

1. Revise the maximum allowable percentage of weighted average loss when the material is subjected to five (5) cycles of sodium sulfate soundness test from 25%, as shown under the Class D of the Quality Chart in Article 1004.01(b) of the Standard Specifications, to 40%; and
2. Revise the maximum allowable percentage of wear as determined by the Los Angeles Abrasion Method from 45%, as shown under Class D of the Quality Chart in Article 1004.01(b) of the Standard Specifications, to 65%; and
3. The sum of the percentages of weighted average loss when the material is subjected to 5 cycles of the sodium sulfate soundness test and the percentage of wear as determined by the Los Angeles Abrasion Method shall not exceed 95%.

PCC QMP ELECTRONIC REPORT SUBMITTALS

Effective: January 13, 2022

The Contractor's QC personnel shall be responsible for electronically submitting the following reports to the Department: PRO and IND data for Bmpr MI654 "Air, Slump, & Quantity"; PRO data for Bmpr MI655 "PCC Strength"; and PRO data for Bmpr MI504 "Field/Lab Gradation". The format for the electronic submittals will be the "QMP" reporting program which will be provided by the Department. Microsoft Office 2007 or newer is required for this program which must be provided by the Contractor.

PCC AUTOMATIC BATCHING EQUIPMENT

Effective: April 23, 2010 Revised: August 1, 2023

Portland cement concrete provided shall be produced from batch plants that conform to the requirements of Article 1103.03 (a) and (b) of the Standard Specifications for Road and Bridge Construction. Semi-automatic batching will not be allowed.

Plants shall have computerized batching interfaced with a printer. IDOT Producer Number, IDOT Concrete Material Code, batch weights, aggregate mixtures, water added, amount of each admixture or additive, and percent variance from design shall be printed for each batch. The ticket shall state the actual water-cement ratio as batched, and the amount of water that can be added to the batch without exceeding the maximum water-cement ratio. Truck delivery tickets will still be required as per Article 1020.11 (a)(7) of the Standard Specifications.

APS EXTENSION BRACKET

This work will consist of furnishing and installing an extension bracket for an APS pushbutton station onto an existing pedestrian pushbutton post, light pole, traffic signal post, or mast arm strain pole.

The APS extension bracket shall meet the following specifications:

- Design allows either MPS or APS devices be mounted to the bracket
- Available in telescoping sizes with field adjustable length and static sizes
- Compatible with most APS devices in the market
- Wire chase for service entry
- Adjustable mounting saddles allow easy banding or bolting to any size pole
- All aluminum design is vandal/weatherproof
- Machined 6061 T6 aluminum with a black powder coat finish.
- All stainless-steel mounting hardware.

The Contractor shall install the extension bracket in accordance with the manufacturer's recommendations. Extension brackets shall be sized as required to provide a maximum 10" clearance from the edge of the pavement to the APS pushbutton in accordance with MUTCD requirements.

Installation: The Contractor shall install the proposed APS stations with the sign housing/ button arrow parallel to the crosswalk. The Contractor shall furnish and install additional hardware, including a swivel kit, as required to meet this alignment requirement at locations determined by the Resident Engineer in addition to the locations listed in the plans.

Anti-seize past shall be installed on all threaded connections.

Basis of Payment: This work will be paid for at the contract unit price per Each for APS EXTENSION BRACKET and shall be payment in full for all labor, materials, and equipment required to furnish and install the APS extension bracket as described above, complete.

ACCESSIBLE PEDESTRIAN SIGNALS (APS)

Description. This work shall consist of furnishing and installing accessible pedestrian signals (APS). Each APS shall consist of an interactive vibrotactile pedestrian pushbutton with speaker, an informational sign, a light emitting diode (LED) indicator light, a solid-state electronic control board, a power supply, wiring, and mounting hardware. The APS shall meet the requirements of the MUTCD and Sections 801 and 888 of the Standard Specifications, except as modified herein.

Add the following to Article 888.03 of the Standard Specifications:

The Contractor is not allowed to install a push-button assembly with the sign below the push-button to meet mounting requirements.

Add the following to Article 1074.02(e) of the Standard Specifications:

Stations shall be designed to be mounted to a post, mast arm pole or wood pole. The station shall be aluminum and shall accept a 3-inch round push-button assembly and a regulatory pedestrian instruction sign according to MUTCD, sign series R10-3e, 9" x 15" sign (Type ZZ Sheeting) with arrow(s) for a count-down pedestrian signal. Stations shall be powder coated black with a black pushbutton and stainless-steel arrow on pushbutton.

Electrical Requirements. The APS shall operate with systems providing 95 to 130 VAC, 60 Hz and throughout an ambient air temperature range of -29°F to +160°F (-34°C to +70°C).

The APS shall be designed for two wire operation to allow APS stations to operate using existing 2/C pushbutton wires. The 2/C pushbutton wires shall be used to provide power and communications (placing pedestrian phase calls) from the APS station to the central control unit in the traffic signal cabinet. Wireless communications between the APS station and the central control unit shall only be used for programming, firmware updates, and APS station management, not for placing pedestrian phase calls.

The APS stations shall be equipped with a shelf mounted central control unit that is located inside the traffic signal controller cabinet and connects to each APS pushbutton station. The central control unit shall be equipped with an Ethernet port that can be used for remote system monitoring, configuration, and administration. A total of one central control unit shall be furnished for each traffic signal cabinet.

The AC power input for the system shall be disconnected in the event that the intersection goes into flash.

The APS shall contain a power protection circuit consisting of both fuse and transient protection.

Audible Indications. A pushbutton locator tone shall sound at each pushbutton and shall be deactivated during the associated walk indication and when associated traffic signals are in flashing mode. Pushbutton locator tones shall have a duration of 0.15 seconds or less and shall repeat at 1-second intervals. Each actuation of the pushbutton shall be accompanied by the speech message "Wait". Locator tones shall be audible 6 to 12 ft from pushbutton.

If two accessible pedestrian pushbuttons are placed less than 10 ft. (3 m) apart or placed on the same pole, the audible walk and don't walk indication shall be a speech ~~walk~~ message. This speech message shall sound throughout the WALK interval only. Common street name shall be used and not the route number of the street unless there is no common street name. The street name used in programming shall reflect the street name mast arm mounted sign panel. Locations without street name (ex. private benefit driveways, shopping plaza entrance, etc.) shall use a general term "Commercial Driveway" as a street name for that leg. The verbal speech message shall be modeled after: "Street Name.' Walk Sign is on to cross "Street Name.'" For signalized intersections utilizing exclusive pedestrian phasing, the verbal message shall be "Walk sign is on for all crossings". In addition, a speech pushbutton information message shall be provided by actuating the APS pushbutton when the WALK interval is not timing. This verbal message shall be modeled after: "Wait. Wait to cross 'Street Name' at 'Street Name'".

Railroad Preemption. At locations with railroad interconnection APS pushbutton shall be capable of receiving a railroad preemption similar to a traffic signal controller and shall be hard wired to the railroad preemption relay inside the traffic signal cabinet. A shelf mount control unit shall be provided and installed inside the cabinet capable of receiving and transmitting the railroad preemption to all the push buttons.

At railroad intersections all APS pushbuttons shall use the speech message and shall follow the below speech models.

During Don't Walk: "Wait to cross 'Street Name' at 'Street Name', Caution, Walk time shortened when train approaches" – this does not repeat, plays only once with every push button press.

During Walk: "Walk sign is on to cross 'Street Name'," – this repeats as many times as possible during Walk interval only.

During Railroad preemption: All push buttons at same time "Train Approaching" – this message shall be repeated two times.

At locations with emergency vehicle preemption, NO additional speech message shall be provided.

Locations with Corner Islands or Center Medians: At locations with corner islands pushbuttons shall follow the requirement of the 10 ft as specified herein regarding the percussive tone vs a speech message. When push buttons are closer than 10 ft. apart the speech message shall follow the format specified herein for the main street crossing. The speech message shall follow the below speech models for the unusual configurations.

Crossing of the right-turn lane from or to Corner Island: "Wait to cross right turn lane for 'Street Name' at 'Street Name' crosswalks" and "Walk sign is on to cross right turn lane for 'Street Name' at 'Street Name' crosswalks."

Crossing from Corner Island to Corner Island where second pushbutton actuation is required: "Wait to cross 'Street Name' at 'Street Name' to median with second pushbutton" and "Walk sign is on to cross 'Street Name' to median with second pushbutton".

Center Medians on a divided highways with push buttons will require pushbutton to have a dual arrow on the pushbutton.

Where two accessible pedestrian pushbuttons are separated by at least 10 ft. (3 m), the walk indication shall be an audible percussive tone. It shall repeat at 8 to 10 ticks per second with a dominant frequency of 880 Hz.

Automatic volume adjustments in response to ambient traffic sound level shall be provided up to a maximum volume of 100 dBA. Locator tone and verbal messages shall be no more than 5 dB louder than ambient sound.

Pedestrian Pushbutton. Pedestrian pushbuttons shall be at least 2 in. (50 mm) in diameter or width. The force required to activate the pushbutton shall be no greater than 3.5 lb. (15.5 N).

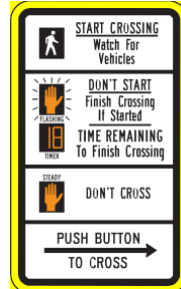
A red LED shall be located on or near the pushbutton which, when activated, acknowledges the pedestrians request to cross the street.

APS pushbutton systems that utilize any wireless technology including Bluetooth technology to place calls or communicate with controller will not be allowed. A central master control unit shall be provided and installed in the traffic signal cabinet. Push button shall be connected directly to the master control unit in the traffic signal cabinet using only two (2) wires. All pushbuttons shall be capable of placing a pedestrian call request into the controller and shall be hard wired. APS pushbuttons shall be a direct replacement of existing standard push buttons and shall be weather resistant with a minimum warranty of three (3) years.

All APS pushbuttons shall come with the messages pre-programmed for each particular intersection regardless of the location or the 10 ft. separation. Final field adjustments including percussive tone vs speech message use shall be completed once push buttons are installed in the final location. All push buttons shall be programmed with the appropriate parameters and settings as directed by the Engineer. These settings shall be standard for all pushbuttons and will vary based on the manufacturer. Access to pushbutton settings shall be provided through an app either through wired, wireless, or Bluetooth connection. Pushbutton information, settings, and access instructions shall all be provided in a weatherproof pouch and safely stored inside each traffic signal cabinet.

Contractor shall remove any existing pedestrian isolation boards, field wire terminals, and any wires to the board when easily accessible. If the pedestrian isolation board has been installed from the factory on the back panel of the cabinet, contractor is to disconnect the power to the isolation board and any wires while leaving the board mounted. This work shall be included in the cost of Accessible Pedestrian Signals and will not be paid for separately.

Signage. A sign shall be located immediately above the pedestrian pushbutton and parallel to the crosswalk controlled by the pushbutton. The sign shall conform to standard MUTCD design R10-3e.



R10-3e

Tactile Arrow. A tactile arrow, pointing in the direction of travel controlled by a pushbutton, shall be provided on the pushbutton.

Vibrotactile Feature. The pushbutton shall pulse when depressed and shall vibrate continuously throughout the WALK interval.

Hardware: All hardware shall be stainless steel. The Contractor shall apply anti-seize compound on all stainless steel threads during installation. APS station hardware that is accessible from outside the unit shall be tamperproof.

Redline Prints: The Contractor shall furnish three copies of red-lined prints inside the controller cabinet and a PDF copy of the modified cabinet prints.

The Contractor shall re-arrange traffic signal cabinet components as required to facilitate installation of the APS system components.

All cables shall have cable connectors that are locked or secured into place to prevent accidental disconnection. The central controller unit power cord shall be direct wired or utilize a NEMA plug. If the power cable utilizes a NEMA plug, the Contractor shall install a duplex non-GFCI equipment outlet inside the cabinet for power.

The Contractor shall be responsible for programming the APS units with IDOT approved settings, street names, speech/tone configurations, etc., in accordance with MUTCD requirements.

The Contractor shall furnish and install one pedestrian pushbutton sign (R10-3e) per APS unit. The sign shall be constructed using Type ZZ retroreflective sheeting in accordance with Article 1091.03. The sign shall have the correct arrow orientation and shall not be modified in any way.

Method of Measurement. This work will be measured for payment as Each, per pushbutton.

Basis of Payment. This work will be paid for at the contract unit price per Each for ACCESSIBLE PEDESTRIAN SIGNALS and shall include all labor, equipment and materials required to furnish, install, and program the APS pushbuttons and install the associated brackets, hardware, and accessories as described above.

BLENDED FINELY DIVIDED MINERALS (BDE)

Effective: April 1, 2021

Revise the second paragraph of Article 1010.01 of the Standard Specifications to read: "Different sources or types of finely divided minerals shall not be mixed or used alternately in the same item of construction, except as a blended finely divided mineral product according to Article 1010.06."

Add the following article to Section 1010 of the Standard Specifications:

"1010.06 Blended Finely Divided Minerals. Blended finely divided minerals shall be the product resulting from the blending or intergrinding of two or three finely divided minerals. Blended finely divided minerals shall be according to ASTM C 1697, except as follows.

(a) Blending shall be accomplished by mechanically or pneumatically intermixing the constituent finely divided minerals into a uniform mixture that is then discharged into a silo for storage or tanker for transportation."

PEDESTRIAN PUSH-BUTTON POST

This work shall be in accordance with Section 876 and 1077 of the Standard Specifications except as modified herein.

This work will consist of furnishing and installing a pedestrian pushbutton post.

The pedestrian pushbutton post shall be constructed from 3" diameter galvanized steel pipe as shown in the pedestrian push button post detail and in accordance with applicable portions of Highway Standard 876001.

The Contractor shall verify all field conditions prior to bidding. There will be no additional compensation for this work.

The Contractor shall install the pedestrian pushbutton post on a 12" diameter, 30" deep concrete foundation.

Basis of Payment: This work will be paid for at the contract unit price per Each for PEDESTRIAN PUSH-BUTTON POST and shall be payment in full for all labor, materials, and equipment required to furnish and install the pedestrian pushbutton post as described above, complete.

REMOVAL AND DISPOSAL OF REGULATED SUBSTANCES (PROJECT SPECIFIC)

Description. This work shall consist of the removal and disposal of regulated substances according to Section 669 of the Standard Specifications as revised below.

Contract Specific Work Areas. For stationing, the lateral distance is measured from centerline and the farthest distance is the offset distance or construction limit, whichever is less.

The following contract specific work areas shall be monitored by the Environmental Firm for soil contamination and workers protection.

Clark Oil, 802 Peoria Street, Washington, Tazewell County

- All excavation in the southwest quadrant of BUS 24 and Franklin Street. Station 395+77 RT to 317+78 RT, 55 feet to 74 feet. The Engineer has determined this material meets the criteria of and shall be managed in accordance to Article 669.05(a)(1). Contaminants of concern sampling parameters: VOCs, SVOCs, and Metals.

Jake Weston State Farm, 708 Peoria Street, Washington, Tazewell County

- All excavation in the southeast quadrant of BUS 24 and Franklin Street. Station 396+18 RT to 396+26 RT, 17 feet to 54 feet. The Engineer has determined this material meets the criteria of and shall be managed in accordance to Article 669.05(a)(1). Contaminants of concern sampling parameters: VOCs, SVOCs, and Metals.

Uftring Chevrolet, 1200 Peoria Street, Washington, Tazewell County

- All excavation in the northwest quadrant of BUS 24 and Mt. Vernon Street. Station 330+68 LT to 330+92 LT, 54 feet to 59 feet. The Engineer has determined this material meets the criteria of and shall be managed in accordance to Article 669.05(a)(1). Contaminants of concern sampling parameters: VOCs, SVOCs, and Metals.

Autozone, 1117 Peoria Street, Washington, Tazewell County

- All excavation in the northeast quadrant of BUS 24 and Mt. Vernon Street. Station 331+44 LT to 331+70 LT, 54 feet to 59 feet. The Engineer has determined this material meets the criteria of and shall be managed in accordance to Article 669.05(a)(1). Contaminants of concern sampling parameters: VOCs, SVOCs, and Metals.

CVS Pharmacy, 1101 Peoria Street, Washington, Tazewell County

- All excavation in the northwest quadrant of BUS 24 and Wilmor Street. Station 384+00 LT to 384+43 LT, 38 feet to 75 feet. The Engineer has determined this material meets the criteria of and shall be managed in accordance to Article 669.05(a)(1). Contaminants of concern sampling parameters: VOCs, SVOCs, and Metals.

Walgreens Pharmacy, 1011 Peoria Street, Washington, Tazewell County

- All excavation in the northeast quadrant of BUS 24 and Wilmor Street. Station 384+80 LT to 385+35 LT, 37 feet to 77 feet. The Engineer has determined this material meets the criteria of and shall be managed in accordance to Article 669.05(a)(1). Contaminants of concern sampling parameters: VOCs, SVOCs, and Metals.

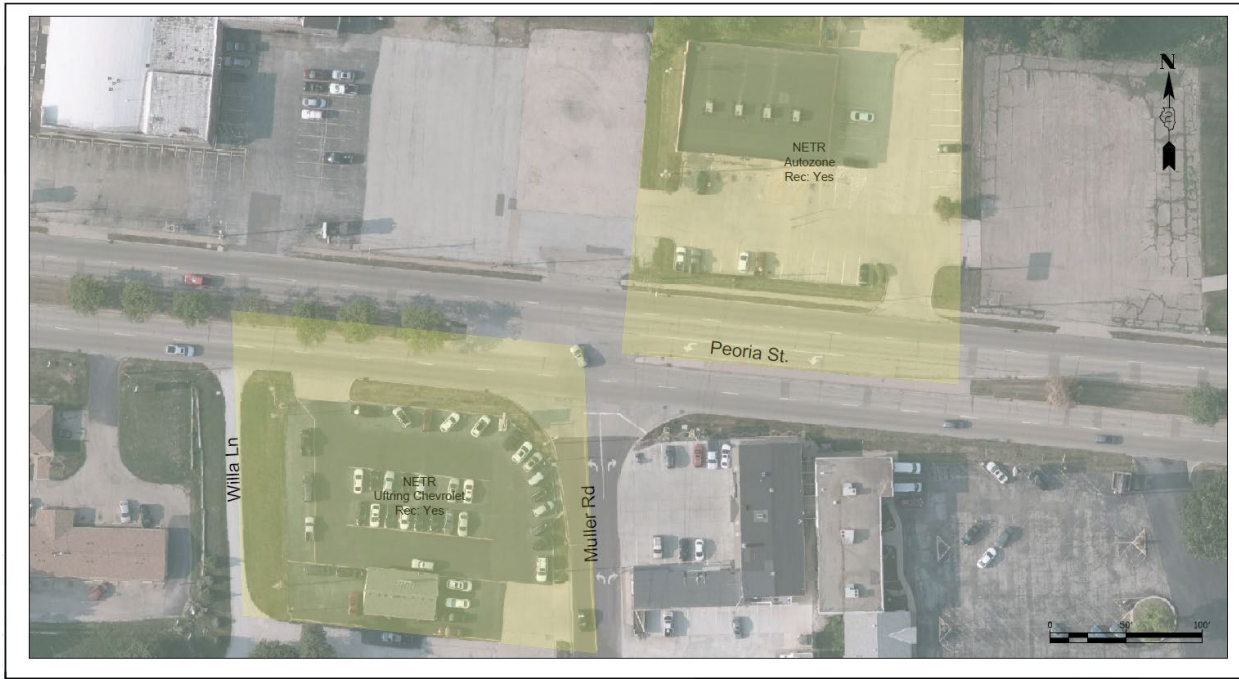
Hardees, 1102 Peoria Street, Washington, Tazewell County

- All excavation in the southwest quadrant of BUS 24 and Wilmor Street. Station 384+04 RT to 384+15 RT, 15 feet to 58 feet. The Engineer has determined this material meets the criteria of and shall be managed in accordance to Article 669.05(a)(1). Contaminants of concern sampling parameters: VOCs, SVOCs, and Metals.

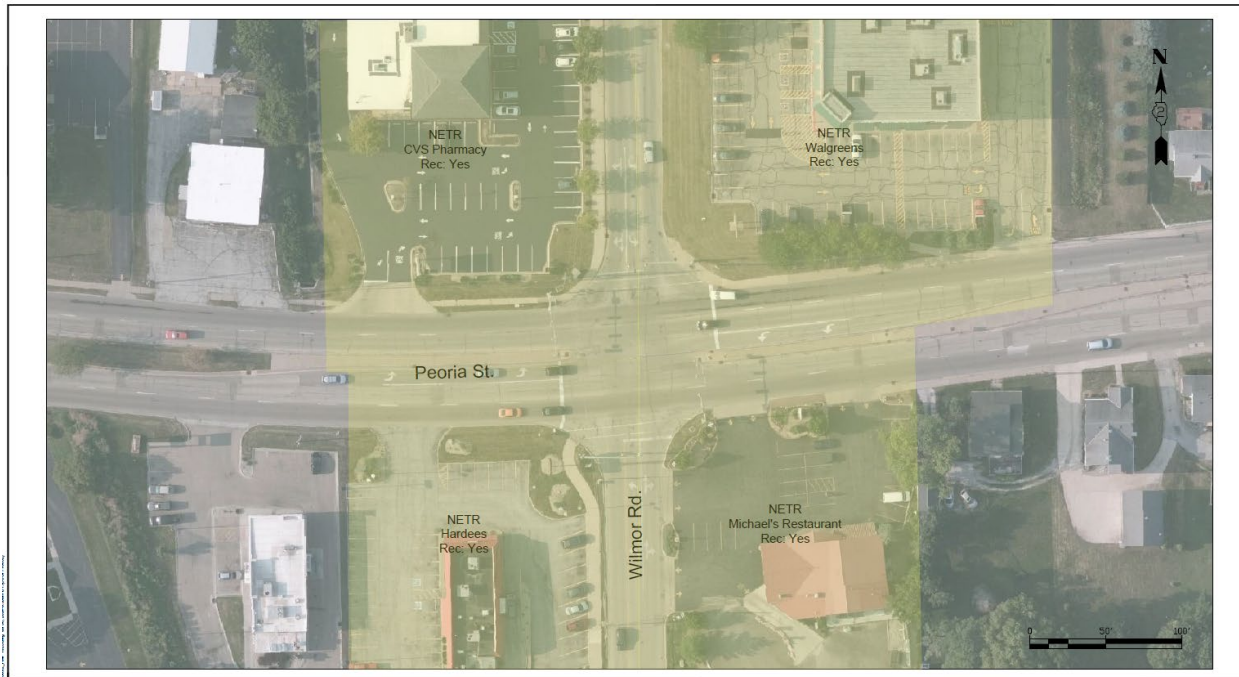
Michael's Restaurant, 1006 Peoria Street, Washington, Tazewell County

- All excavation in the southeast quadrant of BUS 24 and Wilmor Street. Station 384+04 RT to 384+15 RT, 15 feet to 58 feet. The Engineer has determined this material meets the criteria of and shall be managed in accordance to Article 669.05(a)(1). Contaminants of concern sampling parameters: VOCs, SVOCs, and Metals.

FAP Route 399/FAU Route 6776 (IL 8/BUS 24)
 Section [35RS-10;(35NRM)RS-1]SW
 Tazewell County
 Contract No. 68J41

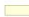



<p>Legend</p> <p>669.05(a)(1)</p>	<p>Notes:</p> <ol style="list-style-type: none"> Additional detail and information regarding regulated substances management and disposal classifications can be found in the Standard Specifications for Road and Bridge Construction (SSRBC) Section 669.05. This figure relies on color code depictions for soil management. Please contact the DESU or AE for assistance. 	<p>wsp</p> <p>2412 W. Randolph Ave. Peoria, IL 61604 www.wsp.com</p> <p>PROJECT NO. 31619038.02 WC NO. 02</p>	<p>SCALE: AS NOTED</p> <p>DATE: 07-30-24</p> <p>DESIGNED BY: TWD</p> <p>DRAWN BY: GAP</p>	<p>EXHIBIT 1</p> <p>REGULATED SUBSTANCE MANAGEMENT AREA</p> <p>Location: Legion Rd. to East of Zinzer Place</p> <table border="1"> <tr> <td>Contract No. 68J41</td> <td>BOE Sequence No. 26340</td> </tr> <tr> <td>PEPA: NETR</td> <td>Route: FAP399</td> </tr> <tr> <td>DDOT Job No. D-34-105-24</td> <td></td> </tr> <tr> <td>City/County: Washington/Tazewell</td> <td></td> </tr> </table>	Contract No. 68J41	BOE Sequence No. 26340	PEPA: NETR	Route: FAP399	DDOT Job No. D-34-105-24		City/County: Washington/Tazewell	
Contract No. 68J41	BOE Sequence No. 26340											
PEPA: NETR	Route: FAP399											
DDOT Job No. D-34-105-24												
City/County: Washington/Tazewell												



<p>Legend</p> <p>669.05(a)(1)</p>	<p>Notes:</p> <ol style="list-style-type: none"> Additional detail and information regarding regulated substances management and disposal classifications can be found in the Standard Specifications for Road and Bridge Construction (SSRBC) Section 669.05. This figure relies on color code depictions for soil management. Please contact the DESU or AE for assistance. 	<p>wsp</p> <p>2412 W. Randolph Ave. Peoria, IL 61604 www.wsp.com</p> <p>PROJECT NO. 31619038.02 WC NO. 02</p>	<p>SCALE: AS NOTED</p> <p>DATE: 07-30-24</p> <p>DESIGNED BY: TWD</p> <p>DRAWN BY: GAP</p>	<p>EXHIBIT 2</p> <p>REGULATED SUBSTANCE MANAGEMENT AREA</p> <p>Location: Legion Rd. to East of Zinzer Place</p> <table border="1"> <tr> <td>Contract No. 68J41</td> <td>BOE Sequence No. 26340</td> </tr> <tr> <td>PEPA: NETR</td> <td>Route: FAP399</td> </tr> <tr> <td>DDOT Job No. D-34-105-24</td> <td></td> </tr> <tr> <td>City/County: Washington/Tazewell</td> <td></td> </tr> </table>	Contract No. 68J41	BOE Sequence No. 26340	PEPA: NETR	Route: FAP399	DDOT Job No. D-34-105-24		City/County: Washington/Tazewell	
Contract No. 68J41	BOE Sequence No. 26340											
PEPA: NETR	Route: FAP399											
DDOT Job No. D-34-105-24												
City/County: Washington/Tazewell												



Legend  669.05(a)(1)	Notes: 1. Additional detail and information regarding regulated substances management and disposal classifications can be found in the Standard Specifications for Road and Bridge Construction (SSRBC) Section 669.05. 2. This figure relies on color code depictions for soil management. Please contact the DESU or AE for assistance.	 3212 St. Nicholas Ave. Peoria, IL 61624 www.wsp.com PROJECT NO. 316796038.02 NO. NO. 02	SCALE: AS NOTED DATE: 07-30-24 DESIGNED BY: TMD DRAWN BY: GAP	EXHIBIT 3 REGULATED SUBSTANCE MANAGEMENT AREA Location: Legion Rd. to East of Zinzer Place Contract No. 68J41 BOC Sequence No. 26346 DESU NTR Route FAP 399 100% Job No. D-24-065-24 City/County: Washington/Tazewell
---	--	--	--	---

Work Zones

Three distinct OSHA HAZWOPER work zones (exclusion, decontamination, and support) shall apply to projects adjacent to or within sites with documented leaking underground storage tank (LUST) incidents, or sites under management in accordance with the requirements of the Site Remediation Program (SRP), Resource Conservation and Recovery Act (RCRA), or Comprehensive Environmental Response, Compensation and Liability Act (CERCLA), or as deemed necessary. For this project, the work zones apply for the following ISGS PESA Sites: **None**

Additional information on the contract specific work areas listed above collected during the regulated substances due-diligence process is available through the District’s Environmental Studies Unit (DESU).

REBUILD EXISTING HANDHOLE (SPECIAL)

This work shall consist of furnishing the materials and construction to rebuild an existing handhole in accordance with the applicable Articles of Section 814, 895, 1020, and 1088 of the Standard Specifications with the following modifications:

Construction Requirements. The Contractor shall perform the following items:

- The Contractor shall remove the existing handhole casting, lids, and hardware and dispose of them off of the right-of-way.

- The Contractor shall remove a minimum of 12 inches of concrete from the existing handhole walls and shall furnish and install a new handhole casting and lid. The new concrete shall be dowelled into the existing concrete.
- The handhole installation shall be in accordance with the latest revision of Highway Standard 814001.
- The Contractor shall provide protection for the handhole cables during all phases of construction.
- The Contractor shall ground the handhole lids and frame in accordance with NEC requirements using #6 XLP-USE green copper conductor cable which shall be bonded to all items and their associated ground rods utilizing mechanical lugs and bolts. The use of split bolts will not be allowed.

Material Requirements:

- The lift ring for the cover shall consist of a solid closed ring of stainless steel at least 10mm (3/8 inch) in diameter. The lift ring shall be attached to the cover by a loop of stainless steel at least 10 mm (3/8 inch) in diameter. The lift ring and loop shall be recessed in the cover.
- The lid shall be marked with the legend "Traffic Signals".

Pre-cast handholes are not allowed.

All unsuitable materials shall be disposed of by the Contractor outside the job limits.

Basis of Payment. This work will be paid for at the contract unit price Each for REBUILD EXISTING HANDHOLE (SPECIAL), which price shall be payment in full for all labor, materials, and equipment required to remove the existing handhole casting and lid and rebuild the handhole as described above as well as any necessary excavating, backfilling, disposal of unsuitable materials, and furnishing all materials within the limits of the handhole.

RECTANGULAR RAPID FLASHING BEACON ASSEMBLY (COMPLETE)

Description: This work shall consist of furnishing all labor, equipment, and material necessary for the installation and assembly of the rectangular rapid flashing beacon complete (RFFB), which includes telescoping steel sign support and bases, signs, pedestrian push button, solar panel, and flashing lights, and advance signage. The work for signs, pedestrian push button, solar panel, and flashing lights shall be in accordance with Section 720 of the Standard Specifications and plan details for the specified locations. The work for the telescoping steel sign support and base shall be in accordance with Section 728 of the Standard Specifications and plan details for the specified locations. The installation of the RFFB shall be placed within a maximum distance of 6' from the marked crosswalk.

The RRFB assembly shall conform to the following minimum specifications:

Functional Specifications:

1. The light intensity of the vehicle indications shall meet the minimum specifications of Society of Automotive Engineers (SAE) standard J595 (Directional Flashing Optical Warning Devices for Authorized Emergency, Maintenance, and Service Vehicles) dated November 2008. Manufacturer Certification of Compliance shall be provided upon request.
2. When activated, all indications associated with a given crosswalk (including those with an advance crossing sign, if used) shall simultaneously commence operation of their alternating rapid flashing within 120 msec and shall cease operation at a predetermined time after the pedestrian actuation.
3. The Pedestrian indication shall be directed at and visible to pedestrians in the crosswalk, and it shall flash concurrently with the vehicle indications to give confirmation that the RRFB is in operation.
4. The system shall include an actuation counter providing data that can be downloaded on-site to a laptop computer using DB9 or USB type cables.
5. Autonomy with a fully charged battery shall be up to 14-28 days without sun, dependent upon ambient temperature and number of activations.

Materials:

Light Bar Housing and Indications

1. The Light Bar housing shall be constructed of durable, corrosion resistant, powder-coated aluminum with stainless steel fasteners.
2. Enclosed components shall be modular in design whereby any component can be easily replaced using common hand tools, without having to remove the housing from the pole.
3. All mounting hardware required for mounting the Light Bar housing shall be provided and shall be stainless steel.
4. Each of the two vehicle RRFB LED indications shall be approximately 7.25" wide x 3" high.
5. A pedestrian LED indication, approximately 0.5" wide x 2.5" high, shall be side-mounted in the Light Bar housing to be directed at and visible to pedestrians in the crosswalk.
6. The LEDs used shall be rated for a minimum 15-year life span.
7. The lights shall have the capability of variable dimming based on the input from an integrated photocell.

Controller

1. The Controller shall be housed in a NEMA 3R rated aluminum enclosure, intended for indoor or outdoor use, primarily to provide a degree of protection against corrosion, windblown dust and rain, splashing water, hose-directed water, and damage from ice formation.
2. The LED light outputs and flash pattern shall be completely programmable, with the capability to actuate RRFB, round LED signal beacons and LED-enhanced signs.
3. The flashing output shall have 70 to 80 periods of flashing per minute, during which one of the yellow indications shall emit two medium pulses of light and the other yellow indication shall emit four short rapid pulses of light followed by a long pulse. The output current shall be maintained as programmed for the duration of the pulse. The flashing output shall be programmable.
4. The Controller flash pattern shall be Interim Approval 21 compliant WW + S.
5. The Controller flash rate shall be Interim Approval 21 compliant at 50 milliseconds.
6. The Controller shall be reconfigurable if future MUTCD or State guidelines specify a different flash pattern.
7. The Controller shall be capable of storing input count data in preset intervals, with downloadable capabilities using optional Windows based PC software program and standard RS232 programming cable.
8. The Controller shall be, in the unlikely event of failure, replaceable independently of other components.

Battery

1. The Battery shall be a 12VDC Absorbed Glass Mat (AGM) sealed lead-acid, maintenance-free battery.
2. The Battery shall be rated at 44AH minimum and shall conform to Battery Council International (BCI) specifications.
3. The Battery shall be solar-charged with a capacity up to 22 days of autonomy without sunlight, varying with ambient temperature and number of activations.
4. The Battery shall be replaceable independently of other components.
5. The Battery shall have a minimum operating temperature range of -76°F to 140°F (- 60°C to 60°C).

Wireless Transceiver Radio

1. Radio control shall be solar-powered, operating on an FCC approved 900 MHz or 2.4 GHz frequency, hopping spread spectrum network with a normal operating range of 900 feet.
2. Radios shall provide wireless communication between the assemblies to integrate the pushbutton activation of indications.
3. To ensure all integral indications consistently flash in unison, the radio shall synchronize the controllers to activate the indications within 120msec of one other and remain synchronized throughout the duration of the flashing cycle.
4. Radio systems shall operate from 3.6 VDC to 15VDC.
5. The Radio shall be, in the unlikely event of failure, replaceable independently of other components.
6. The Radio shall have a minimum operating temperature range of -30°F to 165°F (- 34.4°C to 73.8°C).

Solar Panel

1. The Solar Panel shall provide 20 watts at peak total output.
2. The Solar Panel shall be affixed to an aluminum plate and bracket, adjustable at an angle of 45°- 60° to facilitate adjustment for maximum solar collection and optimal battery strength.
3. The Solar Panel Assembly (panel, plate and bracket) shall be mounted on a 360° rotatable pole cap mount, to facilitate adjustment for maximum solar collection and optimal battery strength.
4. Rated for 90mph wind conditions.
5. The Solar Panel shall have a minimum operating temperature range of -40°F to 122°F (-40°C to 50°C).

Signs and Plaques

1. All signs shall conform to MUTCD standards.
2. All sign blanks and plaques shall be Federally specified .080 gauge, 5052 aluminum.
3. Unless specified otherwise, sign sheeting shall be type Diamond Grade reflective sheeting.
4. All sign assemblies shall use provided anti-vandal fasteners and tools to mount components to sign, and sign to fixture.

5. Crossing signs shall be W11-2 per MUTCD.
6. Crossing plaques W16-7P shall accompany the crossing signs at the beacon assembly.
7. Pedestrian pushbutton instructional signs shall be furnished, at a minimum size of 9" x 12", and installed integral with each pedestrian pushbutton.

Pushbutton

1. The Push Button shall be capable of continuous operation within a temperature range of -30°F to 165°F (-34°C to 74°C).
2. The Push Button shall be an ADA compliant, NEMA rated, ultra-durable long-life button and shall operate as a normally open (n/o) circuit.
3. A low-profile push button frame shall be provided. The pushbutton frame shall be constructed of aluminum and shall have accommodate a 9" x 12" sign and pedestrian pushbutton.

Warranty:

The RRFB assembly shall have a 3-year limited battery warranty, 5-year limited system warranty, and 10-year limited solar panel warranty.

RRFB Operational Requirements:

The RRFB assembly shall conform to the following IDOT Operational Requirements: Beacon Flashing Requirements:

1. When actuated, the two yellow indications in each RRFB unit shall flash in a rapidly flashing sequence.
2. As a specific exception to the requirements for the flash rate of beacons provided in Paragraph 3 of Section 4L.01 of the 2009 MUTCD, RRFBs shall use a much faster flash rate and shall provide 75 flashing sequences per minute. Except as provided in Condition Sf below, during each 800-millisecond flashing sequence, the left and right RRFB indications shall operate using the following sequence:
 - The RRFB indication on the left-hand side shall be illuminated for approximately 50 milliseconds. Both RRFB indications shall be dark for approximately 50 milliseconds.
 - The RRFB indication on the right-hand side shall be illuminated for approximately 50 milliseconds. Both RRFB indications shall be dark for approximately 50 milliseconds.
 - The RRFB indication on the left-hand side shall be illuminated for approximately 50 milliseconds. Both RRFB indications shall be dark for approximately 50 milliseconds.
 - The RRFB indication on the right-hand side shall be illuminated for

- approximately 50 milliseconds. Both RRFB indications shall be dark for approximately 50 milliseconds.
- Both RRFB indications shall be illuminated for approximately 50 milliseconds. Both RRFB indications shall be dark for approximately 50 milliseconds.
 - The RRFB indication on the right-hand side shall be illuminated for approximately 50 milliseconds. Both RRFB indications shall be dark for approximately 250 milliseconds.
3. The flash rate of each individual RRFB indication, as applied over the full flashing sequence, shall not be between 5 and 30 flashes per second to avoid frequencies that might cause seizures.
 4. The light intensity of the yellow indications during daytime conditions shall meet the minimum specifications for Class 1 yellow peak luminous intensity in the Society of Automotive Engineers (SAE) Standard J595 (Directional Flashing Optical Warning Devices for Authorized Emergency, Maintenance, and Service Vehicles) dated January 2005.
 5. To minimize excessive glare during nighttime conditions, an automatic signal dimming device should be used to reduce the brilliance of the RRFB indications during nighttime conditions.

IDOT Requirements for Beacon Operation:

1. The RRFB shall be normally dark, shall initiate operation only upon pedestrian actuation, and shall cease operation at a predetermined time after the pedestrian actuation or, with passive detection, after the pedestrian clears the crosswalk.
2. All RRFB units associated with a given crosswalk (including those with an advance crossing sign, if used) shall, when actuated, simultaneously commence operation of their rapid-flashing indications and shall cease operation simultaneously.
3. If pedestrian pushbutton detectors (rather than passive detection) are used to actuate the RRFB indications, a PUSH BUTTON TO TURN ON WARNING LIGHTS (RIO-25) sign shall be installed explaining the purpose and use of the pedestrian pushbutton detector.
4. The duration of a predetermined period of operation of the RRFBs following each actuation should be based on the procedures provided in Section 4E.06 of the 2009 MUTCD for the timing of pedestrian clearance times for pedestrian signals.
5. The predetermined flash period shall be immediately initiated each time that a pedestrian is detected either through passive detection or as a result of a pedestrian pressing a pushbutton detector, including when pedestrians are detected while the RRFBs are already flashing and when pedestrians are detected immediately after the RRFBs have ceased flashing.
6. A small pilot light shall be installed integral to the RRFB or pedestrian pushbutton detector to give confirmation that the RRFB is in operation.

Basis of Payment: This work will be paid for at the contract unit price per Each for RECTANGULAR RAPID FLASHING BEACON ASSEMBLY (COMPLETE) and shall be payment in full for all labor, equipment, and materials required to furnish and install the RRFB assembly as specified above and shown on the plan detail "RECTANGULAR RAPID FLASHING BEACON CONSTRUCTION DETAILS".

RELOCATE EXISTING SIGNAL HEAD

This work shall be in accordance with Sections 880, 895 and 1078 of the Standard Specifications except as modified herein.

The Contractor shall relocate the existing traffic signal heads as shown in the plans and in the table below.

Signal Head Type	Existing Location	Existing Mounting Type	Proposed Location	Proposed Mounting Type
Ex. Pedestrian Signal Head (A/B)	WB Mast Arm Strain Pole (Ex. MA-1)	Bracket Mounted	NW Quad Traffic Signal Post (Prop. PED-1)	Bracket Mounted*
Ex. Pedestrian Signal Head (C/D)	SB Mast Arm Strain Pole (Ex. MA-2)	Bracket Mounted	SW Quad Traffic Signal Post (Prop. PED-3)	Bracket Mounted*
Ex. Pedestrian Signal Head (E/F)	EB Mast Arm Strain Pole (Ex. MA-3)	Bracket Mounted	SE Quad Traffic Signal Post (Prop. PED-6)	Bracket Mounted*
Ex. Pedestrian Signal Head (G/H)	NB Mast Arm Strain Pole (Ex. MA-4)	Bracket Mounted	NE Quad Traffic Signal Post (Prop. PED-7)	Bracket Mounted*

*The Contractor shall furnish and install new bracketing for each relocated signal head.

The cost to furnish and install new 7/C signal cable for each relocated signal head shall be paid for using the pay item ELECTRIC CABLE IN CONDUIT, SIGNAL NO. 14 7C.

The existing signal heads and pedestrian signal heads are installed with terminal components located in a shared housing on the existing bracketing. The Contractor shall patch (or replace if needed) the existing traffic signal head bracketing after relocating the pedestrian signal heads. The cost of this work shall be included in the cost of this pay item.

All costs associated with furnishing and installing new bracketing for signal heads relocated from the strain poles shall be included in the cost of this pay item. The Contractor shall minimize the total number of holes drilled in a mast arm or traffic signal post to no more than three. The Contractor shall fill holes left in the mast arm from relocated signal heads using stainless steel plugs or aluminum plates with stainless steel banding.

Basis of Payment: This work will be paid for at the contract unit prices Each for RELOCATE EXISTING Signal Head and will be payment in full for all labor, equipment, and materials required to relocate the existing signal heads, and re-use or furnish and install new bracketing as described above, complete.

VIDEO VEHICLE DETECTION SYSTEM, 3 CAMERA

The following video detection systems are approved for use within District 4:

- Iteris VantageNext (3 Camera System)
- Econolite Autoscope Vision (3 Camera System)
- Teledyne Flir, TrafiSense ETH/BPL Thermal (3 Camera System)

The video vehicle detection system shall include all necessary electric cable, electrical junction boxes, electrical and communications surge suppression, hardware, software, programming, and any camera brackets that are required for installation and configuration. These items should be taken into consideration and shall be included in the bid price for the video detection system.

The video detection system shall be installed and operational within 90 days of the contract award.

All cameras shall be installed on traffic signal mast arms using five-foot extension brackets.

All CAT 5 Ethernet cable shall meet the requirements contained in the special provisions (outdoor rated, gel-filled, shielded, etc.) and the cost of the cable shall be included in the bid price for this pay item.

One 12" – 15" color LCD video monitor and 4-camera video selector (if required to switch camera videos) shall be included for each installation to allow for the setup and monitoring of the video detection system.

All vehicle video detection systems shall be equipped with the latest software or firmware revisions.

All video detection cameras shall be installed on the mast arms, centered over the detection area, at a 25 ft. minimum mounting height. All camera brackets shall be constructed of aluminum.

The video vehicle system shall be configured and installed to NEMA TS2 Standards (use of the SDLC port and BIU). Installation conforming to NEMA TS1 standards will not be allowed.

The minimum requirements for a video vehicle detection system are listed below:

1.0 General

This Specification sets forth the minimum requirements for a system that monitors vehicles on a roadway via processing of video images and provides detector outputs to a traffic controller or similar device.

1.1 System Hardware

The system shall consist of four video cameras and an automatic control unit (ACU). The ACU shall process all detected calls and shall be equipped with the latest firmware revisions.

1.2 System Software

The system shall be able to detect either approaching or receding vehicles in multiple traffic lanes. A minimum of 24 detection zones shall be user-definable per camera. The user shall be able to modify and delete previously defined detection zones. The software shall provide remote access operation and shall be the latest revision.

2.0 Functional Capabilities

2.1 Real-Time Detection

2.2 The ACU shall be capable of simultaneously processing information from up to four (4) digital video sources. The video shall be digitized and analyzed at a rate of 30 times per second.

2.3 The system shall be able to detect the presence of vehicles in a minimum of 96 detection zones within the combined field of view of the image sensors.

3.0 Vehicle Detection

3.1 Detection Zone Placement

The video detection system shall provide flexible detection zone placement anywhere and at any orientation within the combined field of view of the image sensors. In addition, detection zones shall have the capability of implementing logical functions including AND OR.

3.2 Optimal Detection

The video detection system shall reliably detect vehicle presence when the image sensor is mounted 10m (30 ft.) or higher above the roadway, when the image sensor is adjacent to the desired coverage area, and when the length of the detection area or field of view (FOV) is not greater than ten (10) times the mounting height of the image sensor. The image sensor shall not be required to be mounted directly over the roadway. A single image sensor, placed at the proper mounting height with the proper lens, shall be able to monitor six (6) to eight (8) traffic lanes simultaneously.

3.3 Detection Performance

Overall performance of the video detection system shall be comparable to inductive loops. Using standard image sensor optics and in the absence of occlusion, the system shall be able to detect vehicle presence with 98% accuracy under normal conditions, (days & night) and 96% accuracy under adverse conditions (fog, rain, snow). The ACU shall output a constant call for each enabled detector output channel if a loss of video signal occurs in any camera.

The ACU shall be capable of processing a minimum of twenty detector zones placed anywhere in the field of view of the camera.

4.0 ACU Hardware

4.1 ACU Mounting

The ACU shall be shelf or rack mountable. Nominal outside dimensions excluding connectors shall not exceed 180mm (7.25") x 475mm (19") x 260mm (10.5") (H x W x D).

4.2 ACU Environmental

The ACU shall be designed to operate reliably in the adverse environment found in the typical roadside traffic cabinet. It shall meet the environmental requirements set forth by the NEMA (National Electrical Manufacturers Association) TS1 and TS2 standards as well as the environmental requirements for Type 170 and Type 179 controllers. The minimum operating temperature range shall be from -35 to +74 degrees C at 0% to 95% relative humidity, non-condensing.

5.0 ACU Electrical

5.1 The ACU shall be modular in design and provide processing capability equivalent to the Intel Pentium microprocessor. The bus connections used to interconnect the modules of the ACU shall be gold-plated DIN connectors.

5.2 The ACU shall be powered by 89 - 135 VAC, 60 Hz, single phase, and draw 0.25 amps, or by 190 - 270 VAC, 50 Hz, single phase and draw 0.12 amps. If a rack mountable ACU is supplied, it shall be capable of operating from 10 to 28 VDC. The power supply shall automatically adapt to the input power level. Surge ratings shall be as set forth in the NEMA TS1 and TS2 specifications.

5.3 Serial communications to a remote computer equipped with remote monitoring software shall be through a RJ-45 Ethernet port.

5.4 The ACU shall be equipped with a NEMA TS2 RS-485 SDLC interface for communicating input and output information. Front panel LEDs shall provide status information when communications are open.

5.5 The ACU and/or camera hookup panel shall be equipped with four RJ-45 connector based/terminal block connections for cameras so that signals from four image sensors can be processed in real-time.

5.6 The ACU shall be equipped with USB ports, WiFi, and Ethernet ports to provide communications to a computer running the configuration and remote access software.

5.7 The ACU and/or camera hookup panels used for a rack mountable ACU shall be equipped with a video output port.

5.8 The ACU shall be equipped with viewable front panel detection LED indications.

6.0 Camera

- 6.1 The video detection system shall use high resolution, color, cameras as the video source for real-time vehicle detection. As a minimum, each image sensor shall provide the following capabilities:
- a. MPEG-4 and H.264 video compression and transport
 - b. Support video streaming that is viewable through a standard web browser with an adjustable frame rates of 5/15/30 fps.
 - c. Images shall be produced with a CCD sensing element with horizontal resolution of at least 720 lines and vertical resolution of at least 480 lines.
 - d. Useable video and resolvable features in the video image shall be produced when those features have luminance levels as low as 0.1 lux at night.
 - e. Useable video and resolvable features in the video image shall be produced when those features have luminance levels as high as 10,000 lux during the day.
 - f. Automatic gain, automatic iris, and absolute black reference controls shall be furnished.
 - g. An optical filter and appropriate electronic circuitry shall be included in the image sensor to suppress "blooming" effects at night.
- 6.2 The image sensor shall be equipped with an integrated zoom lens with zoom and focus capabilities that can be changed using either configuration computer software or hand-held controller. The machine vision processor (MVP) may be enclosed within the camera.
- 6.3 The image sensor and lens assembly shall be housed in an environmental enclosure that provides the following capabilities:
- a. The enclosure shall be waterproof and dust-tight to NEMA-4 specifications. The camera shall be IP-67 rated.
 - b. The enclosure shall allow the image sensor to operate satisfactorily over an ambient temperature range from -34°C to +74°C while exposed to precipitation as well as direct sunlight.
 - c. The enclosure shall allow the image sensor horizon to be rotated in the field during installation.
 - d. A heater shall be at the front of the enclosure to prevent the formation of ice and condensation in cold weather, as well as to assure proper operation of the lens' iris mechanism. The heater shall not interfere with the operation of the image sensor electronics, and it shall not cause interference with the video signal.
 - f. The enclosure shall be light-colored and shall include a sun shield to minimize solar heating. The front edge of the sunshield shall protrude beyond the front edge of the environmental enclosure and shall include provision to divert water flow to

the sides of the sunshield. The amount of overhang of the sun shield shall be adjustable to prevent direct sunlight from entering the lens or hitting the faceplate.

- g. The total weight of the image sensor in the environmental enclosure with sunshield shall be less than 2.7 kg (6 pounds).
 - h. When operating in the environmental enclosure with power and video signal cables connected, the image sensor shall meet FCC class B requirements for electromagnetic interference emissions.
- 6.4 The video output of the image sensor shall be isolated from earth ground. All video connections from the image sensor to the video interface panel shall also be isolated from earth ground.
- 6.5 The video output, communication, and power to the image sensor shall include transient protection to prevent damage to the sensor due to transient voltages occurring on the cable leading from the image sensor to other field locations.
- 6.6 A stainless-steel junction box shall be available as an option with each image sensor for installation on the structure used for image sensor mounting. The junction box shall contain a terminal block for terminating power to the image sensor and connection points for cables from the image sensor and from the ACU.

7.0 Software

- 7.1 The system shall include the remote access software that is used to set up and configure the video detection system. The software shall be of the latest revision.
- 7.2 All necessary cables, adapters, and other equipment shall be included with the system.

8.0 Installation and Training

- 8.1 The supplier of the video detection system shall supervise the installation and testing of the video and video vehicle detection equipment. A factory certified representative from the supplier shall be on-site during installation.
- 8.2 The video detection system shall be installed and operational within 90 days of the contract award.

9.0 Warranty, Maintenance, and Support

- 9.1 The video detection system shall be warranted by its supplier for a minimum of three (3) years from date of turn-on. This warranty shall cover all material defects and shall also provide all parts and labor as well as unlimited technical support.
- 9.2 Ongoing software support by the supplier shall include updates of the ACU and supervisor software. These updates shall be provided free of charge during the warranty period.
- 9.3 The supplier shall maintain a program for technical support and software updates following expiration of the warranty period. This program shall be made available to the contracting agency in the form of a separate agreement for continuing support.

Basis of Payment: This work will not be paid for separately but shall be included in the contract unit price Each for VIDEO VEHICLE DETECTION SYSTEM, 3 CAMERA which price shall be payment in full for all labor, equipment, and materials required to furnish, install, and test the video vehicle detection system described above, complete.

VIDEO VEHICLE DETECTION SYSTEM, 4 CAMERA

The following video detection systems are approved for use within District 4:

- Iteris VantageNext (4 Camera System)
- Econolite Autoscope Vision (4 Camera System)
- Teledyne Flir, TrafiSense ETH/BPL Thermal (4 Camera System)

The video vehicle detection system shall include all necessary electric cable, electrical junction boxes, electrical and communications surge suppression, hardware, software, programming, and any camera brackets that are required for installation and configuration. These items should be taken into consideration and shall be included in the bid price for the video detection system.

The video detection system shall be installed and operational within 90 days of the contract award.

All cameras shall be installed on traffic signal mast arms using five-foot extension brackets.

All CAT 5 Ethernet cable shall meet the requirements contained in the special provisions (outdoor rated, gel-filled, shielded, etc.) and the cost of the cable shall be included in the bid price for this pay item.

One 12" – 15" color LCD video monitor and 4-camera video selector (if required to switch camera videos) shall be included for each installation to allow for the setup and monitoring of the video detection system.

All vehicle video detection systems shall be equipped with the latest software or firmware revisions.

All video detection cameras shall be installed on the mast arms, centered over the detection area, at a 25 ft. minimum mounting height. All camera brackets shall be constructed of aluminum.

The video vehicle system shall be configured and installed to NEMA TS2 Standards (use of the SDLC port and BIU). Installation conforming to NEMA TS1 standards will not be allowed.

The minimum requirements for a video vehicle detection system are listed below:

1.0 General

This Specification sets forth the minimum requirements for a system that monitors vehicles on a roadway via processing of video images and provides detector outputs to a traffic controller or similar device.

1.1 System Hardware

The system shall consist of four video cameras and an automatic control unit (ACU). The ACU shall process all detected calls and shall be equipped with the latest firmware revisions.

1.2 System Software

The system shall be able to detect either approaching or receding vehicles in multiple traffic lanes. A minimum of 24 detection zones shall be user-definable per camera. The user shall be able to modify and delete previously defined detection zones. The software shall provide remote access operation and shall be the latest revision.

2.0 Functional Capabilities

2.1 Real-Time Detection

2.2 The ACU shall be capable of simultaneously processing information from up to four (4) digital video sources. The video shall be digitized and analyzed at a rate of 30 times per second.

2.3 The system shall be able to detect the presence of vehicles in a minimum of 96 detection zones within the combined field of view of the image sensors.

3.0 Vehicle Detection

3.1 Detection Zone Placement

The video detection system shall provide flexible detection zone placement anywhere and at any orientation within the combined field of view of the image sensors. In addition, detection zones shall have the capability of implementing logical functions including AND OR.

3.2 Optimal Detection

The video detection system shall reliably detect vehicle presence when the image sensor is mounted 10m (30 ft.) or higher above the roadway, when the image sensor is adjacent to the desired coverage area, and when the length of the detection area or field of view (FOV) is not greater than ten (10) times the mounting height of the image sensor. The image sensor shall not be required to be mounted directly over the roadway. A single image sensor, placed at the proper mounting height with the proper lens, shall be able to monitor six (6) to eight (8) traffic lanes simultaneously.

3.3 Detection Performance

Overall performance of the video detection system shall be comparable to inductive loops. Using standard image sensor optics and in the absence of occlusion, the system shall be able to detect vehicle presence with 98% accuracy under normal conditions, (days & night) and 96% accuracy under adverse conditions (fog, rain, snow). The ACU shall output a constant call for each enabled detector output channel if a loss of video signal occurs in any camera.

The ACU shall be capable of processing a minimum of twenty detector zones placed anywhere in the field of view of the camera.

4.0 ACU Hardware

4.1 ACU Mounting

The ACU shall be shelf or rack mountable. Nominal outside dimensions excluding connectors shall not exceed 180mm (7.25") x 475mm (19") x 260mm (10.5") (H x W x D).

4.2 ACU Environmental

The ACU shall be designed to operate reliably in the adverse environment found in the typical roadside traffic cabinet. It shall meet the environmental requirements set forth by the NEMA (National Electrical Manufacturers Association) TS1 and TS2 standards as well as the environmental requirements for Type 170 and Type 179 controllers. The minimum operating temperature range shall be from -35 to +74 degrees C at 0% to 95% relative humidity, non-condensing.

5.0 ACU Electrical

5.1 The ACU shall be modular in design and provide processing capability equivalent to the Intel Pentium microprocessor. The bus connections used to interconnect the modules of the ACU shall be gold-plated DIN connectors.

5.2 The ACU shall be powered by 89 - 135 VAC, 60 Hz, single phase, and draw 0.25 amps, or by 190 - 270 VAC, 50 Hz, single phase and draw 0.12 amps. If a rack mountable ACU is supplied, it shall be capable of operating from 10 to 28 VDC. The power supply shall automatically adapt to the input power level. Surge ratings shall be as set forth in the NEMA TS1 and TS2 specifications.

5.3 Serial communications to a remote computer equipped with remote monitoring software shall be through an RJ-45 Ethernet port.

5.4 The ACU shall be equipped with a NEMA TS2 RS-485 SDLC interface for communicating input and output information. Front panel LEDs shall provide status information when communications are open.

5.5 The ACU and/or camera hookup panel shall be equipped with four RJ-45 connector based/terminal block connections for cameras so that signals from four image sensors can be processed in real-time.

5.6 The ACU shall be equipped with USB ports, WiFi, and Ethernet ports to provide communications to a computer running the configuration and remote access software.

5.7 The ACU and/or camera hookup panels used for a rack mountable ACU shall be equipped with a video output port.

5.8 The ACU shall be equipped with viewable front panel detection LED indications.

6.0 Camera

- 6.1 The video detection system shall use high resolution, color, cameras as the video source for real-time vehicle detection. As a minimum, each image sensor shall provide the following capabilities:
- a. MPEG-4 and H.264 video compression and transport.
 - b. Support video streaming that is viewable through a standard web browser with an adjustable frame rates of 5/15/30 fps.
 - c. Images shall be produced with a CCD sensing element with horizontal resolution of at least 720 lines and vertical resolution of at least 480 lines.
 - d. Useable video and resolvable features in the video image shall be produced when those features have luminance levels as low as 0.1 lux at night.
 - e. Useable video and resolvable features in the video image shall be produced when those features have luminance levels as high as 10,000 lux during the day.
 - f. Automatic gain, automatic iris, and absolute black reference controls shall be furnished.
 - g. An optical filter and appropriate electronic circuitry shall be included in the image sensor to suppress "blooming" effects at night.
- 6.2 The image sensor shall be equipped with an integrated zoom lens with zoom and focus capabilities that can be changed using either configuration computer software or hand-held controller. The machine vision processor (MVP) may be enclosed within the camera.
- 6.3 The image sensor and lens assembly shall be housed in an environmental enclosure that provides the following capabilities:
- a. The enclosure shall be waterproof and dust-tight to NEMA-4 specifications. The camera shall be IP-67 rated.
 - b. The enclosure shall allow the image sensor to operate satisfactorily over an ambient temperature range from -34°C to +74°C while exposed to precipitation as well as direct sunlight.
 - c. The enclosure shall allow the image sensor horizon to be rotated in the field during installation.
 - d. A heater shall be at the front of the enclosure to prevent the formation of ice and condensation in cold weather, as well as to assure proper operation of the lens' iris mechanism. The heater shall not interfere with the operation of the image sensor electronics, and it shall not cause interference with the video signal.

- e. The enclosure shall be light-colored and shall include a sun shield to minimize solar heating. The front edge of the sunshield shall protrude beyond the front edge of the environmental enclosure and shall include provision to divert water flow to the sides of the sunshield. The amount of overhang of the sun shield shall be adjustable to prevent direct sunlight from entering the lens or hitting the faceplate.
 - f. The total weight of the image sensor in the environmental enclosure with sunshield shall be less than 2.7 kg (6 pounds).
 - g. When operating in the environmental enclosure with power and video signal cables connected, the image sensor shall meet FCC class B requirements for electromagnetic interference emissions.
- 6.4 The video output of the image sensor shall be isolated from earth ground. All video connections from the image sensor to the video interface panel shall also be isolated from earth ground.
- 6.5 The video output, communication, and power to the image sensor shall include transient protection to prevent damage to the sensor due to transient voltages occurring on the cable leading from the image sensor to other field locations.
- 6.6 A stainless-steel junction box shall be available as an option with each image sensor for installation on the structure used for image sensor mounting. The junction box shall contain a terminal block for terminating power to the image sensor and connection points for cables from the image sensor and from the ACU.

7.0 Software

- 7.1 The system shall include the remote access software that is used to setup and configure the video detection system. The software shall be of the latest revision.
- 7.2 All necessary cables, adapters, and other equipment shall be included with the system.

8.0 Installation and Training

- 8.1 The supplier of the video detection system shall supervise the installation and testing of the video and video vehicle detection equipment. A factory certified representative from the supplier shall be on-site during installation.
- 8.2 The video detection system shall be installed and operational within 90 days of the contract award.

9.0 Warranty, Maintenance, and Support

- 9.1 The video detection system shall be warranted by its supplier for a minimum of three (3) years from date of turn-on. This warranty shall cover all material defects and shall also provide all parts and labor as well as unlimited technical support.
- 9.2 Ongoing software support by the supplier shall include updates of the ACU and supervisor software. These updates shall be provided free of charge during the warranty period.
- 9.3 The supplier shall maintain a program for technical support and software updates following expiration of the warranty period. This program shall be made available to the contracting agency in the form of a separate agreement for continuing support.

Basis of Payment: This work will not be paid for separately but shall be included in the contract unit price Each for VIDEO VEHICLE DETECTION SYSTEM, 4 CAMERA which price shall be payment in full for all labor, equipment, and materials required to furnish, install, and test the video vehicle detection system described above, complete.

UNDERGROUND CONDUIT

This work shall consist of furnishing and installing a conduit of the type and size specified, in accordance with Section 810 of the Standard Specifications except as described herein.

When PVC Conduit is required to be spliced to steel conduit sections, a heavy wall set screw connector with a PVC female adapter shall be installed and sealed by duct seal and plastic tape.

A ¼-inch (6 mm) polypropylene pull rope shall be installed in all conduit runs exceeding 20 feet.

A minimum of 3 feet of rope shall be provided at each end of a conduit run.

This work shall be considered as included in the contract unit price per Foot for UNDERGROUND CONDUIT, PVC of the size and type specified.

BITUMINOUS MATERIALS COST ADJUSTMENTS (BDE)

Effective: November 2, 2006

Revised: August 1, 2017

Description. Bituminous material cost adjustments will be made to provide additional compensation to the Contractor, or credit to the Department, for fluctuations in the cost of bituminous materials when optioned by the Contractor. The bidder shall indicate with their bid whether or not this special provision will be part of the contract.

The adjustments shall apply to permanent and temporary hot-mix asphalt (HMA) mixtures, bituminous surface treatments (cover and seal coats), and preventative maintenance type surface treatments that are part of the original proposed construction, or added as extra work and paid for by agreed unit prices. The adjustments shall not apply to bituminous prime coats, tack coats, crack filling/sealing, joint filling/sealing, or extra work paid for at a lump sum price or by force account.

Method of Adjustment. Bituminous materials cost adjustments will be computed as follows.

$$CA = (BPI_P - BPI_L) \times (\%AC_V / 100) \times Q$$

- Where: CA = Cost Adjustment, \$.
BPI_P = Bituminous Price Index, as published by the Department for the month the work is performed, \$/ton (\$/metric ton).
BPI_L = Bituminous Price Index, as published by the Department for the month prior to the letting for work paid for at the contract price; or for the month the agreed unit price letter is submitted by the Contractor for extra work paid for by agreed unit price, \$/ton (\$/metric ton).
%AC_V = Percent of virgin Asphalt Cement in the Quantity being adjusted. For HMA mixtures, the % AC_V will be determined from the adjusted job mix formula. For bituminous materials applied, a performance graded or cutback asphalt will be considered to be 100% AC_V and undiluted emulsified asphalt will be considered to be 65% AC_V.
Q = Authorized construction Quantity, tons (metric tons) (see below).

For HMA mixtures measured in square yards: $Q, \text{ tons} = A \times D \times (G_{mb} \times 46.8) / 2000$. For HMA mixtures measured in square meters: $Q, \text{ metric tons} = A \times D \times (G_{mb} \times 1) / 1000$. When computing adjustments for full-depth HMA pavement, separate calculations will be made for the binder and surface courses to account for their different G_{mb} and % AC_V.

For bituminous materials measured in gallons: $Q, \text{ tons} = V \times 8.33 \text{ lb/gal} \times SG / 2000$
For bituminous materials measured in liters: $Q, \text{ metric tons} = V \times 1.0 \text{ kg/L} \times SG / 1000$

- Where: A = Area of the HMA mixture, sq yd (sq m).
D = Depth of the HMA mixture, in. (mm).
 G_{mb} = Average bulk specific gravity of the mixture, from the approved mix design.
V = Volume of the bituminous material, gal (L).
SG = Specific Gravity of bituminous material as shown on the bill of lading.

Basis of Payment. Bituminous materials cost adjustments may be positive or negative but will only be made when there is a difference between the BPI_L and BPI_P in excess of five percent, as calculated by:

$$\text{Percent Difference} = \{(BPI_L - BPI_P) \div BPI_L\} \times 100$$

Bituminous materials cost adjustments will be calculated for each calendar month in which applicable bituminous material is placed; and will be paid or deducted when all other contract requirements for the work placed during the month are satisfied. The adjustments shall not apply during contract time subject to liquidated damages for completion of the entire contract.

CEMENT, TYPE IL (BDE)

Effective: August 1, 2023

Add the following to Article 302.02 of the Standard Specifications:

“(k) Type IL Portland-Limestone Cement1001”

Revise Note 2 of Article 352.02 of the Standard Specifications to read:

“Note 2. Either Type I or Type IA portland cement or Type IL portland-limestone cement shall be used.”

Revise Note 1 of Article 404.02 of the Standard Specifications to read:

“Note 1. The cement shall be Type I portland cement or Type IL portland-limestone cement.”

Revise Article 1019.02(a) of the Standard Specifications to read:

“(a) Cement, Type I or IL1001”

COMPENSABLE DELAY COSTS (BDE)

Effective: June 2, 2017

Revised: April 1, 2019

Revise Article 107.40(b) of the Standard Specifications to read:

“(b) Compensation. Compensation will not be allowed for delays, inconveniences, or damages sustained by the Contractor from conflicts with facilities not meeting the above definition; or if a conflict with a utility in an unanticipated location does not cause a shutdown of the work or a documentable reduction in the rate of progress exceeding the limits set herein. The provisions of Article 104.03 notwithstanding, compensation for delays caused by a utility in an unanticipated location will be paid according to the provisions of this Article governing minor and major delays or reduced rate of production which are defined as follows.

- (1) Minor Delay. A minor delay occurs when the work in conflict with the utility in an unanticipated location is completely stopped for more than two hours, but not to exceed two weeks.
- (2) Major Delay. A major delay occurs when the work in conflict with the utility in an unanticipated location is completely stopped for more than two weeks.
- (3) Reduced Rate of Production Delay. A reduced rate of production delay occurs when the rate of production on the work in conflict with the utility in an unanticipated location decreases by more than 25 percent and lasts longer than seven calendar days.”

Revise Article 107.40(c) of the Standard Specifications to read:

“(c) Payment. Payment for Minor, Major, and Reduced Rate of Production Delays will be made as follows.

- (1) Minor Delay. Labor idled which cannot be used on other work will be paid for according to Article 109.04(b)(1) and (2) for the time between start of the delay and the minimum remaining hours in the work shift required by the prevailing practice in the area.

Equipment idled which cannot be used on other work, and which is authorized to standby on the project site by the Engineer, will be paid for according to Article 109.04(b)(4).

- (2) Major Delay. Labor will be the same as for a minor delay.

Equipment will be the same as for a minor delay, except Contractor-owned equipment will be limited to two weeks plus the cost of move-out to either the Contractor’s yard or another job and the cost to re-mobilize, whichever is less. Rental equipment may be paid for longer than two weeks provided the Contractor presents adequate support to the Department (including lease agreement) to show retaining equipment on the job is the most economical course to follow and in the public interest.

- (3) Reduced Rate of Production Delay. The Contractor will be compensated for the reduced productivity for labor and equipment time in excess of the 25 percent threshold for that portion of the delay in excess of seven calendar days. Determination of compensation will be in accordance with Article 104.02, except labor and material additives will not be permitted.

Payment for escalated material costs, escalated labor costs, extended project overhead, and extended traffic control will be determined according to Article 109.13.”

Revise Article 108.04(b) of the Standard Specifications to read:

“(b) No working day will be charged under the following conditions.

- (1) When adverse weather prevents work on the controlling item.
- (2) When job conditions due to recent weather prevent work on the controlling item.
- (3) When conduct or lack of conduct by the Department or its consultants, representatives, officers, agents, or employees; delay by the Department in making the site available; or delay in furnishing any items required to be furnished to the Contractor by the Department prevents work on the controlling item.
- (4) When delays caused by utility or railroad adjustments prevent work on the controlling item.

(5) When strikes, lock-outs, extraordinary delays in transportation, or inability to procure critical materials prevent work on the controlling item, as long as these delays are not due to any fault of the Contractor.

(6) When any condition over which the Contractor has no control prevents work on the controlling item.”

Revise Article 109.09(f) of the Standard Specifications to read:

“(f) Basis of Payment. After resolution of a claim in favor of the Contractor, any adjustment in time required for the work will be made according to Section 108. Any adjustment in the costs to be paid will be made for direct labor, direct materials, direct equipment, direct jobsite overhead, direct offsite overhead, and other direct costs allowed by the resolution. Adjustments in costs will not be made for interest charges, loss of anticipated profit, undocumented loss of efficiency, home office overhead and unabsorbed overhead other than as allowed by Article 109.13, lost opportunity, preparation of claim expenses and other consequential indirect costs regardless of method of calculation.

The above Basis of Payment is an essential element of the contract and the claim cost recovery of the Contractor shall be so limited.”

Add the following to Section 109 of the Standard Specifications.

“**109.13 Payment for Contract Delay.** Compensation for escalated material costs, escalated labor costs, extended project overhead, and extended traffic control will be allowed when such costs result from a delay meeting the criteria in the following table.

Contract Type	Cause of Delay	Length of Delay
Working Days	Article 108.04(b)(3) or Article 108.04(b)(4)	No working days have been charged for two consecutive weeks.
Completion Date	Article 108.08(b)(1) or Article 108.08(b)(7)	The Contractor has been granted a minimum two week extension of contract time, according to Article 108.08.

Payment for each of the various costs will be according to the following.

(a) Escalated Material and/or Labor Costs. When the delay causes work, which would have otherwise been completed, to be done after material and/or labor costs have increased, such increases will be paid. Payment for escalated material costs will be limited to the increased costs substantiated by documentation furnished by the Contractor. Payment for escalated labor costs will be limited to those items in Article 109.04(b)(1) and (2), except the 35 percent and 10 percent additives will not be permitted.

(b) Extended Project Overhead. For the duration of the delay, payment for extended project overhead will be paid as follows.

(1) Direct Jobsite and Offsite Overhead. Payment for documented direct jobsite overhead and documented direct offsite overhead, including onsite supervisory and administrative personnel, will be allowed according to the following table.

Original Contract Amount	Supervisory and Administrative Personnel
Up to \$5,000,000	One Project Superintendent
Over \$ 5,000,000 - up to \$25,000,000	One Project Manager, One Project Superintendent or Engineer, and One Clerk
Over \$25,000,000 - up to \$50,000,000	One Project Manager, One Project Superintendent, One Engineer, and One Clerk
Over \$50,000,000	One Project Manager, Two Project Superintendents, One Engineer, and One Clerk

(2) Home Office and Unabsorbed Overhead. Payment for home office and unabsorbed overhead will be calculated as 8 percent of the total delay cost.

(c) Extended Traffic Control. Traffic control required for an extended period of time due to the delay will be paid for according to Article 109.04.

When an extended traffic control adjustment is paid under this provision, an adjusted unit price as provided for in Article 701.20(a) for increase or decrease in the value of work by more than ten percent will not be paid.

Upon payment for a contract delay under this provision, the Contractor shall assign subrogation rights to the Department for the Department's efforts of recovery from any other party for monies paid by the Department as a result of any claim under this provision. The Contractor shall fully cooperate with the Department in its efforts to recover from another party any money paid to the Contractor for delay damages under this provision."

DISADVANTAGED BUSINESS ENTERPRISE PARTICIPATION (BDE)

Effective: September 1, 2000

Revised: March 2, 2019

FEDERAL OBLIGATION. The Department of Transportation, as a recipient of federal financial assistance, is required to take all necessary and reasonable steps to ensure nondiscrimination in the award and administration of contracts. Consequently, the federal regulatory provisions of 49 CFR Part 26 apply to this contract concerning the utilization of disadvantaged business enterprises. For the purposes of this Special Provision, a disadvantaged business enterprise

(DBE) means a business certified by the Department in accordance with the requirements of 49 CFR Part 26 and listed in the Illinois Unified Certification Program (IL UCP) DBE Directory.

STATE OBLIGATION. This Special Provision will also be used by the Department to satisfy the requirements of the Business Enterprise for Minorities, Females, and Persons with Disabilities Act, 30 ILCS 575. When this Special Provision is used to satisfy state law requirements on 100 percent state-funded contracts, the federal government has no involvement in such contracts (not a federal-aid contract) and no responsibility to oversee the implementation of this Special Provision by the Department on those contracts. DBE participation on 100 percent state-funded contracts will not be credited toward fulfilling the Department's annual overall DBE goal required by the US Department of Transportation to comply with the federal DBE program requirements.

CONTRACTOR ASSURANCE. The Contractor makes the following assurance and agrees to include the assurance in each subcontract the Contractor signs with a subcontractor.

The Contractor, subrecipient, or subcontractor shall not discriminate on the basis of race, color, national origin, or sex in the performance of this contract. The Contractor shall carry out applicable requirements of 49 CFR Part 26 in the award and administration of contracts funded in whole or in part with federal or state funds. Failure by the Contractor to carry out these requirements is a material breach of this contract, which may result in the termination of this contract or such other remedy as the recipient deems appropriate, which may include, but is not limited to:

- (a) Withholding progress payments;
- (b) Assessing sanctions;
- (c) Liquidated damages; and/or
- (d) Disqualifying the Contractor from future bidding as non-responsible.

OVERALL GOAL SET FOR THE DEPARTMENT. As a requirement of compliance with 49 CFR Part 26, the Department has set an overall goal for DBE participation in its federally assisted contracts. That goal applies to all federal-aid funds the Department will expend in its federally assisted contracts for the subject reporting fiscal year. The Department is required to make a good faith effort to achieve the overall goal. The dollar amount paid to all approved DBE companies performing work called for in this contract is eligible to be credited toward fulfillment of the Department's overall goal.

CONTRACT GOAL TO BE ACHIEVED BY THE CONTRACTOR. This contract includes a specific DBE utilization goal established by the Department. The goal has been included because the Department has determined the work of this contract has subcontracting opportunities that may be suitable for performance by DBE companies. The determination is based on an assessment of the type of work, the location of the work, and the availability of DBE companies to do a part of the work. The assessment indicates, in the absence of unlawful discrimination and in an arena of fair and open competition, DBE companies can be expected to perform **1.00%** of the work. This percentage is set as the DBE participation goal for this contract. Consequently, in addition to the other award criteria established for this contract, the Department will only award this contract to a bidder who makes a good faith effort to meet this goal of DBE participation in the performance of the work. A bidder makes a good faith effort for award consideration if either of the following is done in accordance with the procedures set for in this Special Provision:

- (a) The bidder documents enough DBE participation has been obtained to meet the goal or,
- (b) The bidder documents a good faith effort has been made to meet the goal, even though the effort did not succeed in obtaining enough DBE participation to meet the goal.

DBE LOCATOR REFERENCES. Bidders shall consult the IL UCP DBE Directory as a reference source for DBE-certified companies. In addition, the Department maintains a letting and item specific DBE locator information system whereby DBE companies can register their interest in providing quotes on particular bid items advertised for letting. Information concerning DBE companies willing to quote work for particular contracts may be obtained by contacting the Department's Bureau of Small Business Enterprises at telephone number (217) 785-4611, or by visiting the Department's website at:
<http://www.idot.illinois.gov/doing-business/certifications/disadvantaged-business-enterprise-certification/il-ucp-directory/index>.

BIDDING PROCEDURES. Compliance with this Special Provision is a material bidding requirement and failure of the bidder to comply will render the bid not responsive.

The bidder shall submit a DBE Utilization Plan (form SBE 2026), and a DBE Participation Statement (form SBE 2025) for each DBE company proposed for the performance of work to achieve the contract goal, with the bid. If the Utilization Plan indicates the contract goal will not be met, documentation of good faith efforts shall also be submitted. The documentation of good faith efforts must include copies of each DBE and non-DBE subcontractor quote submitted to the bidder when a non-DBE subcontractor is selected over a DBE for work on the contract. The required forms and documentation must be submitted as a single .pdf file using the "Integrated Contractor Exchange (iCX)" application within the Department's "EBids System".

The Department will not accept a Utilization Plan if it does not meet the bidding procedures set forth herein and the bid will be declared not responsive. In the event the bid is declared not responsive, the Department may elect to cause the forfeiture of the penal sum of the bidder's proposal guaranty and may deny authorization to bid the project if re-advertised for bids.

GOOD FAITH EFFORT PROCEDURES. The contract will not be awarded until the Utilization Plan is approved. All information submitted by the bidder must be complete, accurate and adequately document enough DBE participation has been obtained or document the good faith efforts of the bidder, in the event enough DBE participation has not been obtained, before the Department will commit to the performance of the contract by the bidder. The Utilization Plan will be approved by the Department if the Utilization Plan documents sufficient commercially useful DBE work to meet the contract goal or the bidder submits sufficient documentation of a good faith effort to meet the contract goal pursuant to 49 CFR Part 26, Appendix A. This means the bidder must show that all necessary and reasonable steps were taken to achieve the contract goal. Necessary and reasonable steps are those which, by their scope, intensity and appropriateness to the objective, could reasonably be expected to obtain sufficient DBE participation, even if they were not successful. The Department will consider the quality, quantity, and intensity of the kinds of efforts the bidder has made. Mere *pro forma* efforts, in other words efforts done as a matter of form, are not good faith efforts; rather, the bidder is expected to have taken genuine efforts that would be reasonably expected of a bidder actively and aggressively trying to obtain DBE participation sufficient to meet the contract goal.

- (a) The following is a list of types of action that the Department will consider as part of the evaluation of the bidder's good faith efforts to obtain participation. These listed factors are not intended to be a mandatory checklist and are not intended to be exhaustive. Other

factors or efforts brought to the attention of the Department may be relevant in appropriate cases and will be considered by the Department.

- (1) Soliciting through all reasonable and available means (e.g. attendance at pre-bid meetings, advertising and/or written notices) the interest of all certified DBE companies that have the capability to perform the work of the contract. The bidder must solicit this interest within sufficient time to allow the DBE companies to respond to the solicitation. The bidder must determine with certainty if the DBE companies are interested by taking appropriate steps to follow up initial solicitations.
- (2) Selecting portions of the work to be performed by DBE companies in order to increase the likelihood that the DBE goals will be achieved. This includes, where appropriate, breaking out contract work items into economically feasible units to facilitate DBE participation, even when the Contractor might otherwise prefer to perform these work items with its own forces.
- (3) Providing interested DBE companies with adequate information about the plans, specifications, and requirements of the contract in a timely manner to assist them in responding to a solicitation.
- (4) a. Negotiating in good faith with interested DBE companies. It is the bidder's responsibility to make a portion of the work available to DBE subcontractors and suppliers and to select those portions of the work or material needs consistent with the available DBE subcontractors and suppliers, so as to facilitate DBE participation. Evidence of such negotiation includes the names, addresses, and telephone numbers of DBE companies that were considered; a description of the information provided regarding the plans and specifications for the work selected for subcontracting; and evidence as to why additional agreements could not be reached for DBE companies to perform the work.

b. A bidder using good business judgment would consider a number of factors in negotiating with subcontractors, including DBE subcontractors, and would take a firm's price and capabilities as well as contract goals into consideration. However, the fact that there may be some additional costs involved in finding and using DBE companies is not in itself sufficient reason for a bidder's failure to meet the contract DBE goal, as long as such costs are reasonable. Also the ability or desire of a bidder to perform the work of a contract with its own organization does not relieve the bidder of the responsibility to make good faith efforts. Bidders are not, however, required to accept higher quotes from DBE companies if the price difference is excessive or unreasonable. In accordance with the above Bidding Procedures, the documentation of good faith efforts must include copies of each DBE and non-DBE subcontractor quote submitted to the bidder when a non-DBE subcontractor was selected over a DBE for work on the contract.
- (5) Not rejecting DBE companies as being unqualified without sound reasons based on a thorough investigation of their capabilities. The bidder's standing within its industry, membership in specific groups, organizations, or associations and political or social affiliations (for example union vs. non-union employee status) are not legitimate causes for the rejection or non-solicitation of bids in the bidder's efforts to meet the project goal.

- (6) Making efforts to assist interested DBE companies in obtaining bonding, lines of credit, or insurance as required by the recipient or Contractor.
 - (7) Making efforts to assist interested DBE companies in obtaining necessary equipment, supplies, materials, or related assistance or services.
 - (8) Effectively using the services of available minority/women community organizations; minority/women contractors' groups; local, state, and federal minority/women business assistance offices; and other organizations as allowed on a case-by-case basis to provide assistance in the recruitment and placement of DBE companies.
- (b) If the Department determines the bidder has made a good faith effort to secure the work commitment of DBE companies to meet the contract goal, the Department will award the contract provided it is otherwise eligible for award. If the Department determines the bidder has failed to meet the requirements of this Special Provision or that a good faith effort has not been made, the Department will notify the responsible company official designated in the Utilization Plan that the bid is not responsive. The notification will also include a statement of reasons for the adverse determination. If the Utilization Plan is not approved because it is deficient as a technical matter, unless waived by the Department, the bidder will be notified and will be allowed no more than a five calendar day period to cure the deficiency.
- (c) The bidder may request administrative reconsideration of an adverse determination by emailing the Department at "DOT.DBE.UP@illinois.gov" within the five calendar days after the receipt of the notification of the determination. The determination shall become final if a request is not made on or before the fifth calendar day. A request may provide additional written documentation or argument concerning the issues raised in the determination statement of reasons, provided the documentation and arguments address efforts made prior to submitting the bid. The request will be reviewed by the Department's Reconsideration Officer. The Reconsideration Officer will extend an opportunity to the bidder to meet in person to consider all issues of documentation and whether the bidder made a good faith effort to meet the goal. After the review by the Reconsideration Officer, the bidder will be sent a written decision within ten working days after receipt of the request for reconsideration, explaining the basis for finding that the bidder did or did not meet the goal or make adequate good faith efforts to do so. A final decision by the Reconsideration Officer that a good faith effort was made shall approve the Utilization Plan submitted by the bidder and shall clear the contract for award. A final decision that a good faith effort was not made shall render the bid not responsive.

CALCULATING DBE PARTICIPATION. The Utilization Plan values represent work anticipated to be performed and paid for upon satisfactory completion. The Department is only able to count toward the achievement of the overall goal and the contract goal the value of payments made for the work actually performed by DBE companies. In addition, a DBE must perform a commercially useful function on the contract to be counted. A commercially useful function is generally performed when the DBE is responsible for the work and is carrying out its responsibilities by actually performing, managing, and supervising the work involved. The Department and Contractor are governed by the provisions of 49 CFR Part 26.55(c) on questions of commercially useful functions as it affects the work. Specific counting guidelines are provided in 49 CFR Part 26.55, the provisions of which govern over the summary contained herein.

- (a) DBE as the Contractor: 100 percent goal credit for that portion of the work performed by the DBE's own forces, including the cost of materials and supplies. Work that a DBE subcontracts to a non-DBE does not count toward the DBE goals.
- (b) DBE as a joint venture Contractor: 100 percent goal credit for that portion of the total dollar value of the contract equal to the distinct, clearly defined portion of the work performed by the DBE's own forces.
- (c) DBE as a subcontractor: 100 percent goal credit for the work of the subcontract performed by the DBE's own forces, including the cost of materials and supplies, excluding the purchase of materials and supplies or the lease of equipment by the DBE subcontractor from the Contractor or its affiliates. Work that a DBE subcontractor in turn subcontracts to a non-DBE does not count toward the DBE goal.
- (d) DBE as a trucker: 100 percent goal credit for trucking participation provided the DBE is responsible for the management and supervision of the entire trucking operation for which it is responsible. At least one truck owned, operated, licensed, and insured by the DBE must be used on the contract. Credit will be given for the following:
 - (1) The DBE may lease trucks from another DBE firm, including an owner-operator who is certified as a DBE. The DBE who leases trucks from another DBE receives credit for the total value of the transportation services the lessee DBE provides on the contract.
 - (2) The DBE may also lease trucks from a non-DBE firm, including from an owner-operator. The DBE who leases trucks from a non-DBE is entitled to credit only for the fee or commission it receives as a result of the lease arrangement.
- (e) DBE as a material supplier:
 - (1) 60 percent goal credit for the cost of the materials or supplies purchased from a DBE regular dealer.
 - (2) 100 percent goal credit for the cost of materials or supplies obtained from a DBE manufacturer.
 - (3) 100 percent credit for the value of reasonable fees and commissions for the procurement of materials and supplies if not a DBE regular dealer or DBE manufacturer.

CONTRACT COMPLIANCE. Compliance with this Special Provision is an essential part of the contract. The Department is prohibited by federal regulations from crediting the participation of a DBE included in the Utilization Plan toward either the contract goal or the Department's overall goal until the amount to be applied toward the goals has been paid to the DBE. The following administrative procedures and remedies govern the compliance by the Contractor with the contractual obligations established by the Utilization Plan. After approval of the Utilization Plan and award of the contract, the Utilization Plan and individual DBE Participation Statements become part of the contract. If the Contractor did not succeed in obtaining enough DBE participation to achieve the advertised contract goal, and the Utilization Plan was approved and contract awarded based upon a determination of good faith, the total dollar value of DBE work calculated in the approved Utilization Plan as a percentage of the awarded contract value shall become the amended contract goal. All work indicated for performance by an approved DBE

shall be performed, managed, and supervised by the DBE executing the DBE Participation Commitment Statement.

- (a) NO AMENDMENT. No amendment to the Utilization Plan may be made without prior written approval from the Department's Bureau of Small Business Enterprises. All requests for amendment to the Utilization Plan shall be emailed to the Department at DOT.DBE.UP@illinois.gov.
- (b) CHANGES TO WORK. Any deviation from the DBE condition-of-award or contract plans, specifications, or special provisions must be approved, in writing, by the Department as provided elsewhere in the Contract. The Contractor shall notify affected DBEs in writing of any changes in the scope of work which result in a reduction in the dollar amount condition-of-award to the contract. Where the revision includes work committed to a new DBE subcontractor, not previously involved in the project, then a Request for Approval of Subcontractor, Department form BC 260A or AER 260A, must be signed and submitted. If the commitment of work is in the form of additional tasks assigned to an existing subcontract, a new Request for Approval of Subcontractor will not be required. However, the Contractor must document efforts to assure the existing DBE subcontractor is capable of performing the additional work and has agreed in writing to the change.
- (c) SUBCONTRACT. The Contractor must provide copies of DBE subcontracts to the Department upon request. Subcontractors shall ensure that all lower tier subcontracts or agreements with DBEs to supply labor or materials be performed in accordance with this Special Provision.
- (d) ALTERNATIVE WORK METHODS. In addition to the above requirements for reductions in the condition of award, additional requirements apply to the two cases of Contractor-initiated work substitution proposals. Where the contract allows alternate work methods which serve to delete or create underruns in condition of award DBE work, and the Contractor selects that alternate method or, where the Contractor proposes a substitute work method or material that serves to diminish or delete work committed to a DBE and replace it with other work, then the Contractor must demonstrate one of the following:
 - (1) The replacement work will be performed by the same DBE (as long as the DBE is certified in the respective item of work) in a modification of the condition of award; or
 - (2) The DBE is aware its work will be deleted or will experience underruns and has agreed in writing to the change. If this occurs, the Contractor shall substitute other work of equivalent value to a certified DBE or provide documentation of good faith efforts to do so; or
 - (3) The DBE is not capable of performing the replacement work or has declined to perform the work at a reasonable competitive price. If this occurs, the Contractor shall substitute other work of equivalent value to a certified DBE or provide documentation of good faith efforts to do so.
- (e) TERMINATION AND REPLACEMENT PROCEDURES. The Contractor shall not terminate or replace a DBE listed on the approved Utilization Plan, or perform with other forces work designated for a listed DBE except as provided in this Special Provision. The Contractor shall utilize the specific DBEs listed to perform the work and supply the materials for which each is listed unless the Contractor obtains the Department's written consent as provided in subsection (a) of this part. Unless Department consent is provided

for termination of a DBE subcontractor, the Contractor shall not be entitled to any payment for work or material unless it is performed or supplied by the DBE in the Utilization Plan.

As stated above, the Contractor shall not terminate or replace a DBE subcontractor listed in the approved Utilization Plan without prior written consent. This includes, but is not limited to, instances in which the Contractor seeks to perform work originally designated for a DBE subcontractor with its own forces or those of an affiliate, a non-DBE firm, or with another DBE firm. Written consent will be granted only if the Bureau of Small Business Enterprises agrees, for reasons stated in its concurrence document, that the Contractor has good cause to terminate or replace the DBE firm. Before transmitting to the Bureau of Small Business Enterprises any request to terminate and/or substitute a DBE subcontractor, the Contractor shall give notice in writing to the DBE subcontractor, with a copy to the Bureau, of its intent to request to terminate and/or substitute, and the reason for the request. The Contractor shall give the DBE five days to respond to the Contractor's notice. The DBE so notified shall advise the Bureau and the Contractor of the reasons, if any, why it objects to the proposed termination of its subcontract and why the Bureau should not approve the Contractor's action. If required in a particular case as a matter of public necessity, the Bureau may provide a response period shorter than five days.

For purposes of this paragraph, good cause includes the following circumstances:

- (1) The listed DBE subcontractor fails or refuses to execute a written contract;
- (2) The listed DBE subcontractor fails or refuses to perform the work of its subcontract in a way consistent with normal industry standards. Provided, however, that good cause does not exist if the failure or refusal of the DBE subcontractor to perform its work on the subcontract results from the bad faith or discriminatory action of the Contractor;
- (3) The listed DBE subcontractor fails or refuses to meet the Contractor's reasonable, nondiscriminatory bond requirements;
- (4) The listed DBE subcontractor becomes bankrupt, insolvent, or exhibits credit unworthiness;
- (5) The listed DBE subcontractor is ineligible to work on public works projects because of suspension and debarment proceedings pursuant 2 CFR Parts 180, 215 and 1200 or applicable state law.
- (6) The Contractor has determined the listed DBE subcontractor is not a responsible contractor;
- (7) The listed DBE subcontractor voluntarily withdraws from the projects and provides written notice to the Contractor of its withdrawal;
- (8) The listed DBE is ineligible to receive DBE credit for the type of work required;
- (9) A DBE owner dies or becomes disabled with the result that the listed DBE subcontractor is unable to complete its work on the contract;

- (10) Other documented good cause that compels the termination of the DBE subcontractor. Provided, that good cause does not exist if the Contractor seeks to terminate a DBE it relied upon to obtain the contract so that the Contractor can self-perform the work for which the DBE contractor was engaged or so that the Contractor can substitute another DBE or non-DBE contractor after contract award.

When a DBE is terminated or fails to complete its work on the Contract for any reason, the Contractor shall make a good faith effort to find another DBE to substitute for the original DBE to perform at least the same amount of work under the contract as the terminated DBE to the extent needed to meet the established Contract goal. The good faith efforts shall be documented by the Contractor. If the Department requests documentation under this provision, the Contractor shall submit the documentation within seven days, which may be extended for an additional seven days if necessary at the request of the Contractor. The Department will provide a written determination to the Contractor stating whether or not good faith efforts have been demonstrated.

- (f) FINAL PAYMENT. After the performance of the final item of work or delivery of material by a DBE and final payment therefore to the DBE by the Contractor, but not later than 30 calendar days after payment has been made by the Department to the Contractor for such work or material, the Contractor shall submit a DBE Payment Agreement on Department form SBE 2115 to the Resident Engineer. If full and final payment has not been made to the DBE, the DBE Payment Agreement shall indicate whether a disagreement as to the payment required exists between the Contractor and the DBE or if the Contractor believes the work has not been satisfactorily completed. If the Contractor does not have the full amount of work indicated in the Utilization Plan performed by the DBE companies indicated in the Utilization Plan and after good faith efforts are reviewed, the Department may deduct from contract payments to the Contractor the amount of the goal not achieved as liquidated and ascertained damages. The Contractor may request an administrative reconsideration of any amount deducted as damages pursuant to subsection (h) of this part.
- (g) ENFORCEMENT. The Department reserves the right to withhold payment to the Contractor to enforce the provisions of this Special Provision. Final payment shall not be made on the contract until such time as the Contractor submits sufficient documentation demonstrating achievement of the goal in accordance with this Special Provision or after liquidated damages have been determined and collected.
- (h) RECONSIDERATION. Notwithstanding any other provision of the contract, including but not limited to Article 109.09 of the Standard Specifications, the Contractor may request administrative reconsideration of a decision to deduct the amount of the goal not achieved as liquidated damages. A request to reconsider shall be delivered to the Contract Compliance Section and shall be handled and considered in the same manner as set forth in paragraph (c) of "Good Faith Effort Procedures" of this Special Provision, except a final decision that a good faith effort was not made during contract performance to achieve the goal agreed to in the Utilization Plan shall be the final administrative decision of the Department. The result of the reconsideration process is not administratively appealable to the U.S. Department of Transportation.

FUEL COST ADJUSTMENT (BDE)

Effective: April 1, 2009

Revised: August 1, 2017

Description. Fuel cost adjustments will be made to provide additional compensation to the Contractor, or a credit to the Department, for fluctuations in fuel prices when optioned by the Contractor. The bidder shall indicate with their bid whether or not this special provision will be part of the contract. Failure to indicate "Yes" for any category of work will make that category of work exempt from fuel cost adjustment.

General. The fuel cost adjustment shall apply to contract pay items as grouped by category. The adjustment shall only apply to those categories of work checked "Yes", and only when the cumulative plan quantities for a category exceed the required threshold. Adjustments to work items in a category, either up or down, and extra work paid for by agreed unit price will be subject to fuel cost adjustment only when the category representing the added work was subject to the fuel cost adjustment. Extra work paid for at a lump sum price or by force account will not be subject to fuel cost adjustment. Category descriptions and thresholds for application and the fuel usage factors which are applicable to each are as follows:

(a) Categories of Work.

- (1) Category A: Earthwork. Contract pay items performed under Sections 202, 204, and 206 including any modified standard or nonstandard items where the character of the work to be performed is considered earthwork. The cumulative total of all applicable item plan quantities shall exceed 25,000 cu yd (20,000 cu m). Included in the fuel usage factor is a weighted average 0.10 gal/cu yd (0.50 liters/cu m) factor for trucking.
- (2) Category B: Subbases and Aggregate Base Courses. Contract pay items constructed under Sections 311, 312 and 351 including any modified standard or nonstandard items where the character of the work to be performed is considered construction of a subbase or aggregate, stabilized or modified base course. The cumulative total of all applicable item plan quantities shall exceed 5000 tons (4500 metric tons). Included in the fuel usage factor is a 0.60 gal/ton (2.50 liters/metric ton) factor for trucking.
- (3) Category C: Hot-Mix Asphalt (HMA) Bases, Pavements and Shoulders. Contract pay items constructed under Sections 355, 406, 407 and 482 including any modified standard or nonstandard items where the character of the work to be performed is considered HMA bases, pavements and shoulders. The cumulative total of all applicable item plan quantities shall exceed 5000 tons (4500 metric tons). Included in the fuel usage factor is 0.60 gal/ton (2.50 liters/metric ton) factor for trucking.
- (4) Category D: Portland Cement Concrete (PCC) Bases, Pavements and Shoulders. Contract pay items constructed under Sections 353, 420, 421 and 483 including any modified standard or nonstandard items where the character of the work to be performed is considered PCC base, pavement or shoulder. The cumulative total of all applicable item plan quantities shall exceed 7500 sq yd (6000 sq m). Included in the fuel usage factor is 1.20 gal/cu yd (5.94 liters/cu m) factor for trucking.
- (5) Category E: Structures. Structure items having a cumulative bid price that exceeds \$250,000 for pay items constructed under Sections 502, 503, 504, 505, 512, 516 and 540 including any modified standard or nonstandard items where the character of the

work to be performed is considered structure work when similar to that performed under these sections and not included in categories A through D.

(b) Fuel Usage Factors.

English Units		
Category	Factor	Units
A - Earthwork	0.34	gal / cu yd
B – Subbase and Aggregate Base courses	0.62	gal / ton
C – HMA Bases, Pavements and Shoulders	1.05	gal / ton
D – PCC Bases, Pavements and Shoulders	2.53	gal / cu yd
E – Structures	8.00	gal / \$1000

Metric Units		
Category	Factor	Units
A - Earthwork	1.68	liters / cu m
B – Subbase and Aggregate Base courses	2.58	liters / metric ton
C – HMA Bases, Pavements and Shoulders	4.37	liters / metric ton
D – PCC Bases, Pavements and Shoulders	12.52	liters / cu m
E – Structures	30.28	liters / \$1000

(c) Quantity Conversion Factors.

Category	Conversion	Factor
B	sq yd to ton	0.057 ton / sq yd / in depth
	sq m to metric ton	0.00243 metric ton / sq m / mm depth
C	sq yd to ton	0.056 ton / sq yd / in depth
	sq m to metric ton	0.00239 m ton / sq m / mm depth
D	sq yd to cu yd	0.028 cu yd / sq yd / in depth
	sq m to cu m	0.001 cu m / sq m / mm depth

Method of Adjustment. Fuel cost adjustments will be computed as follows.

$$CA = (FPI_P - FPI_L) \times FUF \times Q$$

- Where: CA = Cost Adjustment, \$
 FPI_P = Fuel Price Index, as published by the Department for the month the work is performed, \$/gal (\$/liter)
 FPI_L = Fuel Price Index, as published by the Department for the month prior to the letting for work paid for at the contract price; or for the month the agreed unit price letter is submitted by the Contractor for extra work paid for by agreed unit price, \$/gal (\$/liter)
 FUF = Fuel Usage Factor in the pay item(s) being adjusted
 Q = Authorized construction Quantity, tons (metric tons) or cu yd (cu m)

The entire FUF indicated in paragraph (b) will be used regardless of use of trucking to perform the work.

Basis of Payment. Fuel cost adjustments may be positive or negative but will only be made when there is a difference between the FPI_L and FPI_P in excess of five percent, as calculated by:

$$\text{Percent Difference} = \{(FPI_L - FPI_P) \div FPI_L\} \times 100$$

Fuel cost adjustments will be calculated for each calendar month in which applicable work is performed; and will be paid or deducted when all other contract requirements for the items of work are satisfied. The adjustments shall not apply during contract time subject to liquidated damages for completion of the entire contract.

HOT-MIX ASPHALT (BDE)

Effective: January 1, 2024

Revise the second paragraph of Articles 1030.07(a)(11) and 1030.08(a)(9) of the Standard Specifications to read:

“When establishing the target density, the HMA maximum theoretical specific gravity (G_{mm}) will be based on the running average of four available Department test results for that project. If less than four G_{mm} test results are available, an average of all available Department test results for that project will be used. The initial G_{mm} will be the last available Department test result from a QMP project. If there is no available Department test result from a QMP project, the Department mix design verification test result will be used as the initial G_{mm} .”

In the Supplemental Specifications, replace the revision for the end of the third paragraph of Article 1030.09(h)(2) with the following:

“When establishing the target density, the HMA maximum theoretical specific gravity (G_{mm}) will be the Department mix design verification test result.”

Revise the tenth paragraph of Article 1030.10 of the Standard Specifications to read:

“Production is not required to stop after a test strip has been constructed.”

ILLINOIS WORKS APPRENTICESHIP INITIATIVE – STATE FUNDED CONTRACTS (BDE)

Effective: June 2, 2021

Revised: April 2, 2024

Illinois Works Jobs Program Act (30 ILCS 559/20-1 et seq.). For contracts having an awarded contract value of \$500,000 or more, the Contractor shall comply with the Illinois Works Apprenticeship Initiative (30 ILCS 559/20-20 to 20-25) and all applicable administrative rules. The goal of the Illinois Apprenticeship Works Initiative is that apprentices will perform either 10% of the total labor hours actually worked in each prevailing wage classification or 10% of the estimated labor hours in each prevailing wage classification, whichever is less. Of this goal, at least 50% of the labor hours of each prevailing wage classification performed by apprentices shall be performed by graduates of the Illinois Works Pre-Apprenticeship Program, the Illinois Climate Works Pre-Apprenticeship Program, or the Highway Construction Careers Training Program.

The Contractor may seek from the Department of Commerce and Economic Opportunity (DCEO) a waiver or reduction of this goal in certain circumstances pursuant to 30 ILCS 559/20-20(b). The Contractor shall ensure compliance during the term of the contract and will be required to report on and certify its compliance. An apprentice use plan, apprentice hours, and a compliance certification shall be submitted to the Engineer on forms provided by the Department and/or DCEO.

MATERIAL TRANSFER DEVICE (BDE)

Effective: June 15, 1999

Revised: January 1, 2022

Add the following to Article 406.03 of the Standard Specifications:

“(n) Material Transfer Device1102.02”

Add the following to the end of Article 406.06(f) of the Standard Specifications:

“When required, a material transfer device (MTD) shall be used to transfer the HMA from the haul trucks to the spreading and finishing machine. The particular HMA mixtures for which an MTD is required will be specified in the plans. When not required, an MTD may still be used at the Contractor’s option, subject to the requirements and restrictions herein. Use of MTDs shall be according to the following.

MTD Category	Usage
Category I	Any resurfacing application Full-Depth HMA where the in-place binder thickness is ≥ 10 in. (250 mm)
Category II	Full-Depth HMA where the in-place binder thickness is < 10 in. (250 mm)

Category I MTD’s will only be allowed to travel over structures under the following conditions:

- (1) Approval will be given by the Engineer.
- (2) The MTD shall be emptied of HMA material prior to crossing the structure and shall travel at crawl speed across the structure.
- (3) The tires of the MTD shall travel on or in close proximity and parallel to the beam and/or girder lines of the structure.”

Add the following to the end of Article 406.13(b) of the Standard Specifications:

“The required use of an MTD will be measured for payment in tons (metric tons) of the HMA mixtures placed with the MTD. The use of an MTD at the Contractor’s option will not be measured for payment.”

Add the following between the second and third paragraphs of Article 406.14 of the Standard Specifications:

“The required use of an MTD will be paid for at the contract unit price per ton (metric ton) for MATERIAL TRANSFER DEVICE. The HMA mixtures placed with the MTD will be paid for separately according to their respective specifications.”

Revise Article 1102.02 of the Standard Specifications to read:

“1102.02 Material Transfer Device (MTD). The MTD shall be according to the following.

- (a) Requirements. The MTD shall have a minimum surge capacity of 15 tons (13.5 metric tons), shall be self-propelled and capable of moving independent of the paver, and shall be equipped with the following.
 - (1) Front-Dump Hopper and Conveyor. The conveyor shall provide a positive restraint along the sides of the conveyor to prevent material spillage. MTDs having paver style hoppers shall have a horizontal bar restraint placed across the foldable wings which prevents the wings from being folded.
 - (2) Paver Hopper Insert. The paver hopper insert shall have a minimum capacity of 14 tons (12.7 metric tons).
 - (3) Mixer/Agitator Mechanism. This re-mixing mechanism shall consist of a segmented, anti-segregation, re-mixing auger.
- (b) Qualification and Designation. The MTD shall be on the Department’s qualified product list with one of the following designations.
 - (1) Category I. The MTD has a documented maximum HMA carrying capacity contact pressure greater than 25 psi and has a central surge hopper of sufficient capacity to mix upstream HMA with downstream HMA.
 - (2) Category II. The MTD has a documented maximum HMA carrying capacity contact pressure less than or equal to 25 psi.”

PERFORMANCE GRADED ASPHALT BINDER (BDE)

Effective: January 1, 2023

Revise Article 1032.05 of the Standard Specifications to read:

“1032.05 Performance Graded Asphalt Binder. These materials will be accepted according to the Bureau of Materials Policy Memorandum, “Performance Graded Asphalt Binder Qualification Procedure.” The Department will maintain a qualified producer list. These materials shall be free from water and shall not foam when heated to any temperature below the actual flash point. Air blown asphalt, recycle engine oil bottoms (ReOB), and polyphosphoric acid (PPA) modification shall not be used.

When requested, producers shall provide the Engineer with viscosity/temperature relationships for the performance graded asphalt binders delivered and incorporated in the work.

- (a) Performance Graded (PG) Asphalt Binder. The asphalt binder shall meet the requirements of AASHTO M 320, Table 1 “Standard Specification for Performance Graded Asphalt Binder” for the grade shown on the plans and the following.

Test	Parameter
Small Strain Parameter (AASHTO PP 113) BBR, ΔT_c , 40 hrs PAV (40 hrs continuous or 2 PAV at 20 hrs)	-5 °C min.

- (b) Modified Performance Graded (PG) Asphalt Binder. The asphalt binder shall meet the requirements of AASHTO M 320, Table 1 “Standard Specification for Performance Graded Asphalt Binder” for the grade shown on the plans.

Asphalt binder modification shall be performed at the source, as defined in the Bureau of Materials Policy Memorandum, “Performance Graded Asphalt Binder Qualification Procedure.”

Modified asphalt binder shall be safe to handle at asphalt binder production and storage temperatures or HMA construction temperatures. Safety Data Sheets (SDS) shall be provided for all asphalt modifiers.

- (1) Polymer Modification (SB/SBS or SBR). Elastomers shall be added to the base asphalt binder to achieve the specified performance grade and shall be either a styrene-butadiene diblock, triblock copolymer without oil extension, or a styrene-butadiene rubber. The polymer modified asphalt binder shall be smooth, homogeneous, and be according to the requirements shown in Table 1 or 2 for the grade shown on the plans.

Table 1 - Requirements for Styrene-Butadiene Copolymer (SB/SBS) Modified Asphalt Binders		
Test	Asphalt Grade SB/SBS PG 64-28 SB/SBS PG 70-22	Asphalt Grade SB/SBS PG 64-34 SB/SBS PG 70-28 SB/SBS PG 76-22 SB/SBS PG 76-28
Separation of Polymer ITP, "Separation of Polymer from Asphalt Binder" Difference in °F (°C) of the softening point between top and bottom portions	4 (2) max.	4 (2) max.
TESTS ON RESIDUE FROM ROLLING THIN FILM OVEN TEST (AASHTO T 240)		
Elastic Recovery ASTM D 6084, Procedure A, 77 °F (25 °C), 100 mm elongation, %	60 min.	70 min.

Table 2 - Requirements for Styrene-Butadiene Rubber (SBR) Modified Asphalt Binders		
Test	Asphalt Grade SBR PG 64-28 SBR PG 70-22	Asphalt Grade SB/SBS PG 64-34 SB/SBS PG 70-28 SBR PG 76-22 SBR PG 76-28
Separation of Polymer ITP, "Separation of Polymer from Asphalt Binder" Difference in °F (°C) of the softening point between top and bottom portions	4 (2) max.	4 (2) max.
Toughness ASTM D 5801, 77 °F (25 °C), 20 in./min. (500 mm/min.), in.-lbs (N-m)	110 (12.5) min.	110 (12.5) min.
Tenacity ASTM D 5801, 77 °F (25 °C), 20 in./min. (500 mm/min.), in.-lbs (N-m)	75 (8.5) min.	75 (8.5) min.
TESTS ON RESIDUE FROM ROLLING THIN FILM OVEN TEST (AASHTO T 240)		
Elastic Recovery ASTM D 6084, Procedure A, 77 °F (25 °C), 100 mm elongation, %	40 min.	50 min.

- (2) Ground Tire Rubber (GTR) Modification. GTR modification is the addition of recycled ground tire rubber to liquid asphalt binder to achieve the specified performance grade. GTR shall be produced from processing automobile and/or truck tires by the ambient grinding method or micronizing through a cryogenic process. GTR shall not exceed 1/16 in. (2 mm) in any dimension and shall not contain free metal particles, moisture that would cause foaming of the asphalt, or other foreign materials. A mineral powder (such as talc) meeting the requirements of AASHTO M 17 may be added, up to a maximum of four percent by weight of GTR to reduce sticking and caking of the GTR

particles. When tested in accordance with Illinois Modified AASHTO T 27 “Standard Method of Test for Sieve Analysis of Fine and Coarse Aggregates” or AASHTO PP 74 “Standard Practice for Determination of Size and Shape of Glass Beads Used in Traffic Markings by Means of Computerized Optical Method”, a 50 g sample of the GTR shall conform to the following gradation requirements.

Sieve Size	Percent Passing
No. 16 (1.18 mm)	100
No. 30 (600 µm)	95 ± 5
No. 50 (300 µm)	> 20

GTR modified asphalt binder shall be tested for rotational viscosity according to AASHTO T 316 using spindle S27. GTR modified asphalt binder shall be tested for original dynamic shear and RTFO dynamic shear according to AASHTO T 315 using a gap of 2 mm.

The GTR modified asphalt binder shall meet the requirements of Table 3.

Table 3 - Requirements for Ground Tire Rubber (GTR) Modified Asphalt Binders		
Test	Asphalt Grade GTR PG 64-28 GTR PG 70-22	Asphalt Grade GTR PG 76-22 GTR PG 76-28 GTR PG 70-28
TESTS ON RESIDUE FROM ROLLING THIN FILM OVEN TEST (AASHTO T 240)		
Elastic Recovery ASTM D 6084, Procedure A, 77 °F (25 °C), 100 mm elongation, %	60 min.	70 min.

- (3) Softener Modification (SM). Softener modification is the addition of organic compounds, such as engineered flux, bio-oil blends, modified vegetable oils, glycol amines, and fatty acid derivatives, to the base asphalt binder to achieve the specified performance grade. Softeners shall be dissolved, dispersed, or reacted in the asphalt binder to enhance its performance and shall remain compatible with the asphalt binder with no separation. Softeners shall not be added to modified PG asphalt binder as defined in Articles 1032.05(b)(1) or 1032.05(b)(2).

An Attenuated Total Reflectance-Fourier Transform Infrared spectrum (ATR-FTIR) shall be collected for both the softening compound as well as the softener modified asphalt binder at the dose intended for qualification. The ATR-FTIR spectra shall be collected on unaged softener modified binder, 20-hour Pressurized Aging Vessel (PAV) aged softener modified binder, and 40-hour PAV aged softener modified binder. The ATR-FTIR shall be collected in accordance with Illinois Test Procedure 601. The electronic files spectral files (in one of the following extensions or equivalent: *.SPA, *.SPG, *.IRD, *.IFG, *.CSV, *.SP, *.IRS, *.GAML, *.[0-9], *.IGM, *.ABS, *.DRT, *.SBM, *.RAS) shall be submitted to the Central Bureau of Materials.

Softener modified asphalt binders shall meet the requirements in Table 4.

Table 4 - Requirements for Softener Modified Asphalt Binders		
Test	Asphalt Grade	
		SM PG 46-28
	SM PG 52-28	SM PG 52-34
	SM PG 58-22	SM PG 58-28
	SM PG 64-22	
Small Strain Parameter (AASHTO PP 113) BBR, ΔT_c , 40 hrs PAV (40 hrs continuous or 2 PAV at 20 hrs)	-5°C min.	
Large Strain Parameter (Illinois Modified AASHTO T 391) DSR/LAS Fatigue Property, $\Delta G^* _{peak}$, 40 hrs PAV (40 hrs continuous or 2 PAV at 20 hrs)	≥ 54 %	

The following grades may be specified as tack coats.

Asphalt Grade	Use
PG 58-22, PG 58-28, PG 64-22	Tack Coat"

Revise Article 1031.06(c)(1) and 1031.06(c)(2) of the Standard Specifications to read:

“(1) RAP/RAS. When RAP is used alone or RAP is used in conjunction with RAS, the percentage of virgin ABR shall not exceed the amounts listed in the following table.

HMA Mixtures - RAP/RAS Maximum ABR % ^{1/ 2/}			
Ndesign	Binder	Surface	Polymer Modified Binder or Surface ^{3/}
30	30	30	10
50	25	15	10
70	15	10	10
90	10	10	10

- 1/ For Low ESAL HMA shoulder and stabilized subbase, the RAP/RAS ABR shall not exceed 50 percent of the mixture.
- 2/ When RAP/RAS ABR exceeds 20 percent, the high and low virgin asphalt binder grades shall each be reduced by one grade (i.e. 25 percent ABR would require a virgin asphalt binder grade of PG 64-22 to be reduced to a PG 58-28).
- 3/ The maximum ABR percentages for ground tire rubber (GTR) modified mixes shall be equivalent to the percentages specified for SBS/SBR polymer modified mixes.

- (2) FRAP/RAS. When FRAP is used alone or FRAP is used in conjunction with RAS, the percentage of virgin asphalt binder replacement shall not exceed the amounts listed in the following table.

HMA Mixtures - FRAP/RAS Maximum ABR % ^{1/ 2/}			
Ndesign	Binder	Surface	Polymer Modified Binder or Surface ^{3/}
30	55	45	15
50	45	40	15
70	45	35	15
90	45	35	15
SMA	--	--	25
IL-4.75	--	--	35

- 1/ For Low ESAL HMA shoulder and stabilized subbase, the FRAP/RAS ABR shall not exceed 50 percent of the mixture.
- 2/ When FRAP/RAS ABR exceeds 20 percent for all mixes, the high and low virgin asphalt binder grades shall each be reduced by one grade (i.e. 25 percent ABR would require a virgin asphalt binder grade of PG 64-22 to be reduced to a PG 58-28).
- 3/ The maximum ABR percentages for GTR modified mixes shall be equivalent to the percentages specified for SBS/SBR polymer modified mixes.”

Add the following to the end of Note 2 of Article 1030.03 of the Standard Specifications.

“A dedicated storage tank for the ground tire rubber (GTR) modified asphalt binder shall be provided. This tank shall be capable of providing continuous mechanical mixing throughout and/or recirculation of the asphalt binder to provide a uniform mixture. The tank shall be heated and capable of maintaining the temperature of the asphalt binder at 300 °F to 350 °F (149 °C to 177 °C). The asphalt binder metering systems of dryer drum plants shall be calibrated with the actual GTR modified asphalt binder material with an accuracy of ±0.40 percent.”

PORTLAND CEMENT CONCRETE (BDE)

Effective: August 1, 2023

Revise the second paragraph of Article 1103.03(a)(4) the Standard Specifications to read:

“The dispenser system shall provide a visual indication that the liquid admixture is actually entering the batch, such as via a transparent or translucent section of tubing or by independent check with an integrated secondary metering device. If approved by the Engineer, an alternate indicator may be used for admixtures dosed at rates of 25 oz/cwt (1630 mL/100 kg) or greater, such as accelerating admixtures, corrosion inhibitors, and viscosity modifying admixtures.”

REMOVAL AND DISPOSAL OF REGULATED SUBSTANCES (BDE)

Effective: January 1, 2024

Revised: April 1, 2024

Revise the first paragraph of Article 669.04 of the Standard Specifications to read:

“669.04 Regulated Substances Monitoring. Regulated substances monitoring includes environmental observation and field screening during regulated substances management activities. The excavated soil and groundwater within the work areas shall be managed as either uncontaminated soil, hazardous waste, special waste, or non-special waste.

As part of the regulated substances monitoring, the monitoring personnel shall perform and document the applicable duties listed on form BDE 2732 “Regulated Substances Monitoring Daily Record (RSMDR)”.

Revise the first two sentences of the nineteenth paragraph of Article 669.05 of the Standard Specifications to read:

“The Contractor shall coordinate waste disposal approvals with the disposal facility and provide the specific analytical testing requirements of that facility. The Contractor shall make all arrangements for collection, transportation, and analysis of landfill acceptance testing.”

Revise the last paragraph of Article 669.05 of the Standard Specifications to read:

“The Contractor shall select a permitted landfill facility or CCDD/USFO facility meeting the requirements of 35 Ill. Admin. Code Parts 810-814 or Part 1100, respectively. The Department will review and approve or reject the facility proposed by the Contractor based upon information provided in BDE 2730. The Contractor shall verify whether the selected facility is compliant with those applicable standards as mandated by their permit and whether the facility is presently, has previously been, or has never been, on the United States Environmental Protection Agency (U.S. EPA) National Priorities List or the Resource Conservation and Recovery Act (RCRA) List of Violating Facilities. The use of a Contractor selected facility shall in no manner delay the construction schedule or alter the Contractor's responsibilities as set forth.”

Revise the first paragraph of Article 669.07 of the Standard Specifications to read:

“669.07 Temporary Staging. Soil classified according to Articles 669.05(a)(2), (b)(1), or (c) may be temporarily staged at the Contractor’s option. All other soil classified according to Articles 669.05(a)(1), (a)(3), (a)(4), (a)(5), (a)(6), or (b)(2) shall be managed and disposed of without temporary staging to the greatest extent practicable. If circumstances beyond the Contractor’s control require temporary staging of these latter materials, the Contractor shall request approval from the Engineer in writing.

Topsoil for re-use as final cover which has been field screened and found not to exhibit PID readings over daily background readings as documented on the BDE 2732, visual staining or odors, and is classified according to Articles 669.05(a)(2), (a)(3), (a)(4), (b)(1), or (c) may be temporarily staged at the Contractor’s option.”

Add the following paragraph after the sixth paragraph of Article 669.11 of the Standard Specifications.

“The sampling and testing of effluent water derived from dewatering discharges for priority pollutants volatile organic compounds (VOCs), priority pollutants semi-volatile organic compounds (SVOCs), or priority pollutants metals, will be paid for at the contract unit price per each for VOCS GROUNDWATER ANALYSIS using EPA Method 8260B, SVOCs GROUNDWATER ANALYSIS using EPA Method 8270C, or RCRA METALS GROUNDWATER ANALYSIS using EPA Methods 6010B and 7471A. This price shall include transporting the sample from the job site to the laboratory.”

Revise the first sentence of the eight paragraph of Article 669.11 of the Standard Specifications to read:

“Payment for temporary staging of soil classified according to Articles 669.05(a)(1), (a)(3), (a)(4), (a)(5), (a)(6), or (b)(2) to be managed and disposed of, if required and approved by the Engineer, will be paid according to Article 109.04.”

SEEDING (BDE)

Effective: November 1, 2022

Revise Article 250.07 of the Standard Specifications to read:

“**250.07 Seeding Mixtures.** The classes of seeding mixtures and combinations of mixtures will be designated in the plans.

When an area is to be seeded with two or more seeding classes, those mixtures shall be applied separately on the designated area within a seven day period. Seeding shall occur prior to placement of mulch cover. A Class 7 mixture can be applied at any time prior to applying any seeding class or added to them and applied at the same time.

TABLE 1 - SEEDING MIXTURES		
Class - Type	Seeds	lb/acre (kg/hectare)
1 Lawn Mixture 1/	Kentucky Bluegrass	100 (110)
	Perennial Ryegrass	60 (70)
	<i>Festuca rubra</i> ssp. <i>rubra</i> (Creeping Red Fescue)	40 (50)
1A Salt Tolerant Lawn Mixture 1/	Kentucky Bluegrass	60 (70)
	Perennial Ryegrass	20 (20)
	<i>Festuca rubra</i> ssp. <i>rubra</i> (Creeping Red Fescue)	20 (20)
	<i>Festuca brevipilla</i> (Hard Fescue)	20 (20)
	<i>Puccinellia distans</i> (Fults Saltgrass or Salty Alkaligrass)	60 (70)
1B Low Maintenance Lawn Mixture 1/	Turf-Type Fine Fescue 3/	150 (170)
	Perennial Ryegrass	20 (20)
	Red Top	10 (10)
	<i>Festuca rubra</i> ssp. <i>rubra</i> (Creeping Red Fescue)	20 (20)
2 Roadside Mixture 1/	<i>Lolium arundinaceum</i> (Tall Fescue)	100 (110)
	Perennial Ryegrass	50 (55)
	<i>Festuca rubra</i> ssp. <i>rubra</i> (Creeping Red Fescue)	40 (50)
	Red Top	10 (10)
2A Salt Tolerant Roadside Mixture 1/	<i>Lolium arundinaceum</i> (Tall Fescue)	60 (70)
	Perennial Ryegrass	20 (20)
	<i>Festuca rubra</i> ssp. <i>rubra</i> (Creeping Red Fescue)	30 (20)
	<i>Festuca brevipilla</i> (Hard Fescue)	30 (20)
	<i>Puccinellia distans</i> (Fults Saltgrass or Salty Alkaligrass)	60 (70)
3 Northern Illinois Slope Mixture 1/	<i>Elymus canadensis</i> (Canada Wild Rye) 5/	5 (5)
	Perennial Ryegrass	20 (20)
	Alsike Clover 4/	5 (5)
	<i>Desmanthus illinoensis</i> (Illinois Bundleflower) 4/ 5/	2 (2)
	<i>Schizachyrium scoparium</i> (Little Bluestem) 5/	12 (12)
	<i>Bouteloua curtipendula</i> (Side-Oats Grama) 5/	10 (10)
	<i>Puccinellia distans</i> (Fults Saltgrass or Salty Alkaligrass)	30 (35)
	Oats, Spring	50 (55)
	Slender Wheat Grass 5/	15 (15)
	Buffalo Grass 5/ 7/	5 (5)
	3A Southern Illinois Slope Mixture 1/	Perennial Ryegrass
<i>Elymus canadensis</i> (Canada Wild Rye) 5/		20 (20)
<i>Panicum virgatum</i> (Switchgrass) 5/		10 (10)
<i>Schizachyrium scoparium</i> (Little Blue Stem) 5/		12 (12)
<i>Bouteloua curtipendula</i> (Side-Oats Grama) 5/		10 (10)
<i>Dalea candida</i> (White Prairie Clover) 4/ 5/		5 (5)
<i>Rudbeckia hirta</i> (Black-Eyed Susan) 5/		5 (5)
Oats, Spring		50 (55)

Class – Type	Seeds	lb/acre (kg/hectare)
4 Native Grass 2/ 6/	<i>Andropogon gerardi</i> (Big Blue Stem) 5/	4 (4)
	<i>Schizachyrium scoparium</i> (Little Blue Stem) 5/	5 (5)
	<i>Bouteloua curtipendula</i> (Side-Oats Grama) 5/	5 (5)
	<i>Elymus canadensis</i> (Canada Wild Rye) 5/	1 (1)
	<i>Panicum virgatum</i> (Switch Grass) 5/	1 (1)
	<i>Sorghastrum nutans</i> (Indian Grass) 5/	2 (2)
	Annual Ryegrass	25 (25)
	Oats, Spring	25 (25)
	Perennial Ryegrass	15 (15)
	4A Low Profile Native Grass 2/ 6/	<i>Schizachyrium scoparium</i> (Little Blue Stem) 5/
<i>Bouteloua curtipendula</i> (Side-Oats Grama) 5/		5 (5)
<i>Elymus canadensis</i> (Canada Wild Rye) 5/		1 (1)
<i>Sporobolus heterolepis</i> (Prairie Dropseed) 5/		0.5 (0.5)
Annual Ryegrass		25 (25)
Oats, Spring		25 (25)
Perennial Ryegrass		15 (15)
4B Wetland Grass and Sedge Mixture 2/ 6/		Annual Ryegrass
	Oats, Spring	25 (25)
	Wetland Grasses (species below) 5/	6 (6)
<u>Species:</u>	<u>% By Weight</u>	
<i>Calamagrostis canadensis</i> (Blue Joint Grass)	12	
<i>Carex lacustris</i> (Lake-Bank Sedge)	6	
<i>Carex slipata</i> (Awl-Fruited Sedge)	6	
<i>Carex stricta</i> (Tussock Sedge)	6	
<i>Carex vulpinoidea</i> (Fox Sedge)	6	
<i>Eleocharis acicularis</i> (Needle Spike Rush)	3	
<i>Eleocharis obtusa</i> (Blunt Spike Rush)	3	
<i>Glyceria striata</i> (Fowl Manna Grass)	14	
<i>Juncus effusus</i> (Common Rush)	6	
<i>Juncus tenuis</i> (Slender Rush)	6	
<i>Juncus torreyi</i> (Torrey's Rush)	6	
<i>Leersia oryzoides</i> (Rice Cut Grass)	10	
<i>Scirpus acutus</i> (Hard-Stemmed Bulrush)	3	
<i>Scirpus atrovirens</i> (Dark Green Rush)	3	
<i>Bolboschoenus fluviatilis</i> (River Bulrush)	3	
<i>Schoenoplectus tabernaemontani</i> (Softstem Bulrush)	3	
<i>Spartina pectinata</i> (Cord Grass)	4	

Class – Type	Seeds	lb/acre (kg/hectare)
5	Forb with	Annuals Mixture (Below)
	Annuals Mixture 2/ 5/ 6/	Forb Mixture (Below)
		1 (1)
		10 (10)
	Annuals Mixture - Mixture not exceeding 25 % by weight of any one species, of the following:	
	<i>Coreopsis lanceolata</i> (Sand Coreopsis)	
	<i>Leucanthemum maximum</i> (Shasta Daisy)	
	<i>Gaillardia pulchella</i> (Blanket Flower)	
	<i>Ratibida columnifera</i> (Prairie Coneflower)	
	<i>Rudbeckia hirta</i> (Black-Eyed Susan)	
	Forb Mixture - Mixture not exceeding 5 % by weight PLS of any one species, of the following:	
	<i>Amorpha canescens</i> (Lead Plant) 4/	
	<i>Anemone cylindrica</i> (Thimble Weed)	
	<i>Asclepias tuberosa</i> (Butterfly Weed)	
	<i>Aster azureus</i> (Sky Blue Aster)	
	<i>Symphotrichum leave</i> (Smooth Aster)	
	<i>Aster novae-angliae</i> (New England Aster)	
	<i>Baptisia leucantha</i> (White Wild Indigo) 4/	
	<i>Coreopsis palmata</i> (Prairie Coreopsis)	
	<i>Echinacea pallida</i> (Pale Purple Coneflower)	
	<i>Eryngium yuccifolium</i> (Rattlesnake Master)	
	<i>Helianthus mollis</i> (Downy Sunflower)	
	<i>Heliopsis helianthoides</i> (Ox-Eye)	
	<i>Liatris aspera</i> (Rough Blazing Star)	
	<i>Liatris pycnostachya</i> (Prairie Blazing Star)	
	<i>Monarda fistulosa</i> (Prairie Bergamot)	
	<i>Parthenium integrifolium</i> (Wild Quinine)	
	<i>Dalea candida</i> (White Prairie Clover) 4/	
	<i>Dalea purpurea</i> (Purple Prairie Clover) 4/	
	<i>Physostegia virginiana</i> (False Dragonhead)	
	<i>Potentilla arguta</i> (Prairie Cinquefoil)	
	<i>Ratibida pinnata</i> (Yellow Coneflower)	
	<i>Rudbeckia subtomentosa</i> (Fragrant Coneflower)	
	<i>Silphium laciniatum</i> (Compass Plant)	
	<i>Silphium terebinthinaceum</i> (Prairie Dock)	
	<i>Oligoneuron rigidum</i> (Rigid Goldenrod)	
	<i>Tradescantia ohiensis</i> (Spiderwort)	
	<i>Veronicastrum virginicum</i> (Culver's Root)	

Class – Type	Seeds	lb/acre (kg/hectare)
5A Large Flower Native Forb Mixture 2/ 5/ 6/	Forb Mixture (see below)	5 (5)
	<u>Species:</u>	<u>% By Weight</u>
	<i>Aster novae-angliae</i> (New England Aster)	5
	<i>Echinacea pallida</i> (Pale Purple Coneflower)	10
	<i>Helianthus mollis</i> (Downy Sunflower)	10
	<i>Heliopsis helianthoides</i> (Ox-Eye)	10
	<i>Liatris pycnostachya</i> (Prairie Blazing Star)	10
	<i>Ratibida pinnata</i> (Yellow Coneflower)	5
	<i>Rudbeckia hirta</i> (Black-Eyed Susan)	10
	<i>Silphium laciniatum</i> (Compass Plant)	10
	<i>Silphium terebinthinaceum</i> (Prairie Dock)	20
	<i>Oligoneuron rigidum</i> (Rigid Goldenrod)	10
5B Wetland Forb 2/ 5/ 6/	Forb Mixture (see below)	2 (2)
	<u>Species:</u>	<u>% By Weight</u>
	<i>Acorus calamus</i> (Sweet Flag)	3
	<i>Angelica atropurpurea</i> (Angelica)	6
	<i>Asclepias incarnata</i> (Swamp Milkweed)	2
	<i>Aster puniceus</i> (Purple Stemmed Aster)	10
	<i>Bidens cernua</i> (Beggarticks)	7
	<i>Eutrochium maculatum</i> (Spotted Joe Pye Weed)	7
	<i>Eupatorium perfoliatum</i> (Boneset)	7
	<i>Helenium autumnale</i> (Autumn Sneezeweed)	2
	<i>Iris virginica shrevei</i> (Blue Flag Iris)	2
	<i>Lobelia cardinalis</i> (Cardinal Flower)	5
	<i>Lobelia siphilitica</i> (Great Blue Lobelia)	5
	<i>Lythrum alatum</i> (Winged Loosestrife)	2
	<i>Physostegia virginiana</i> (False Dragonhead)	5
	<i>Persicaria pensylvanica</i> (Pennsylvania Smartweed)	10
	<i>Persicaria lapathifolia</i> (Curlytop Knotweed)	10
	<i>Pycnanthemum virginianum</i> (Mountain Mint)	5
	<i>Rudbeckia laciniata</i> (Cut-leaf Coneflower)	5
	<i>Oligoneuron riddellii</i> (Riddell Goldenrod)	2
	<i>Sparganium eurycarpum</i> (Giant Burreed)	5
6 Conservation Mixture 2/ 6/	<i>Schizachyrium scoparium</i> (Little Blue Stem) 5/ <i>Elymus canadensis</i> (Canada Wild Rye) 5/ Buffalo Grass 5/ 7/ Vernal Alfalfa 4/ Oats, Spring	5 (5) 2 (2) 5 (5) 15 (15) 48 (55)
6A Salt Tolerant Conservation Mixture 2/ 6/	<i>Schizachyrium scoparium</i> (Little Blue Stem) 5/ <i>Elymus canadensis</i> (Canada Wild Rye) 5/ Buffalo Grass 5/ 7/ Vernal Alfalfa 4/ Oats, Spring <i>Puccinellia distans</i> (Fults Saltgrass or Salty Alkaligrass)	5 (5) 2 (2) 5 (5) 15 (15) 48 (55) 20 (20)
7 Temporary Turf Cover Mixture	Perennial Ryegrass Oats, Spring	50 (55) 64 (70)

Notes:

- 1/ Seeding shall be performed when the ambient temperature has been between 45 °F (7 °C) and 80 °F (27 °C) for a minimum of seven (7) consecutive days and is forecasted to be the same for the next five (5) days according to the National Weather Service.
- 2/ Seeding shall be performed in late fall through spring beginning when the ambient temperature has been below 45 °F (7 °C) for a minimum of seven (7) consecutive days and ending when the ambient temperature exceeds 80 °F (27 °C) according to the National Weather Service.
- 3/ Specific variety as shown in the plans or approved by the Engineer.
- 4/ Inoculation required.
- 5/ Pure Live Seed (PLS) shall be used.
- 6/ Fertilizer shall not be used.
- 7/ Seed shall be primed with KNO₃ to break dormancy and dyed to indicate such.

Seeding will be inspected after a period of establishment. The period of establishment shall be six (6) months minimum, but not to exceed nine (9) months. After the period of establishment, areas not exhibiting 75 percent uniform growth shall be interseeded or reseeded, as determined by the Engineer, at no additional cost to the Department.”

SHORT TERM AND TEMPORARY PAVEMENT MARKINGS (BDE)

Effective: April 1, 2024

Revised: April 2, 2024

Revise Article 701.02(d) of the Standard Specifications to read:

“(d) Pavement Marking Tapes (Note 3)1095.06”

Add the following Note to the end of Article 701.02 of the Standard Specifications:

“Note 3. White or yellow pavement marking tape that is to remain in place longer than 14 days shall be Type IV tape.”

Revise Article 703.02(c) of the Standard Specifications to read:

“(c) Pavement Marking Tapes (Note 1)1095.06”

Add the following Note to the end of Article 703.02 of the Standard Specifications:

“Note 1. White or yellow pavement marking tape that is to remain in place longer than 14 days shall be Type IV tape.”

Revise Article 1095.06 of the Standard Specifications to read:

“1095.06 Pavement Marking Tapes. Type I white or yellow marking tape shall consist of glass spheres embedded into a binder on a foil backing that is precoated with a pressure sensitive adhesive. The spheres shall be of uniform gradation and distributed evenly over the surface of the tape.

Type IV tape shall consist of white or yellow tape with wet reflective media incorporated to provide immediate and continuing retroreflection in wet and dry conditions. The wet retroreflective media shall be bonded to a durable polyurethane surface. The patterned surface shall have approximately 40 ± 10 percent of the surface area raised and presenting a near vertical face to traffic from any direction. The channels between the raised areas shall be substantially free of exposed reflective elements or particles.

Blackout tape shall consist of a matte black, non-reflective, patterned surface that is precoated with a pressure sensitive adhesive.

- (a) Color. The white and yellow markings shall meet the following requirements for daylight reflectance and color, when tested, using a color spectrophotometer with 45 degrees circumferential/zero degree geometry, illuminant D65, and two degree observer angle. The color instrument shall measure the visible spectrum from 380 to 720 nm with a wavelength measurement interval and spectral bandpass of 10 nm.

Color	Daylight Reflectance %Y
White	65 min.
Yellow *	36 - 59

*Shall match Aerospace Material Specification Standard 595 33538 (Orange Yellow) and the chromaticity limits as follows.

x	0.490	0.475	0.485	0.530
y	0.470	0.438	0.425	0.456

- (b) Retroreflectivity. The white and yellow markings shall be retroreflective. Reflective values measured in accordance with the photometric testing procedure of ASTM D 4061 shall not be less than those listed in the table below. The coefficient of retroreflected luminance, R_L , shall be expressed as average millicandelas/footcandle/sq ft (millicandelas/lux/sq m), measured on a 3.0 x 0.5 ft (900 mm x 150 mm) panel at 86 degree entrance angle.

Coefficient of Retroreflected Luminance, R_L , Dry					
Type I			Type IV		
Observation Angle	White	Yellow	Observation Angle	White	Yellow
0.2°	2700	2400	0.2°	1300	1200
0.5°	2250	2000	0.5°	1100	1000

Wet retroreflectance shall be measured for Type IV under wet conditions according to ASTM E 2177 and meet the following.

Wet Retroreflectance, Initial R_L	
Color	R_L 1.05/88.76
White	300
Yellow	200

- (c) Skid Resistance. The surface of Type IV and blackout markings shall provide a minimum skid resistance of 45 BPN when tested according to ASTM E 303.
- (d) Application. The pavement marking tape shall have a precoated pressure sensitive adhesive and shall require no activation procedures. Test pieces of the tape shall be applied according to the manufacturer's instructions and tested according to ASTM D 1000, Method A, except that a stiff, short bristle roller brush and heavy hand pressure will be substituted for the weighted rubber roller in applying the test pieces to the metal test panel. Material tested as directed above shall show a minimum adhesion value of 750 g/in. (30 g/mm) width at the temperatures specified in ASTM D 1000. The adhesive shall be resistant to oils, acids, solvents, and water, and shall not leave objectionable stains or residue after removal. The material shall be flexible and conformable to the texture of the pavement.
- (e) Durability. Type IV and blackout tape shall be capable of performing for the duration of a normal construction season and shall then be capable of being removed intact or in large sections at pavement temperatures above 40 °F (4 °C) either manually or with a roll-up device without the use of sandblasting, solvents, or grinding. The Contractor shall provide a manufacturer's certification that the material meets the requirements for being removed after the following minimum traffic exposure based on transverse test decks with rolling traffic.
- (1) Time in place - 400 days
 - (2) ADT per lane - 9,000 (28 percent trucks)
 - (3) Axle hits - 10,000,000 minimum

Samples of the material applied to standard specimen plates will be measured for thickness and tested for durability in accordance with ASTM D 4060, using a CS-17 wheel and 1000-gram load, and shall meet the following criteria showing no significant change in color after being tested for the number of cycles indicated.

Test	Type I	Type IV	Blackout
Minimum Initial Thickness, mils (mm)	20 (0.51)	65 (1.65) ^{1/} 20 (0.51) ^{2/}	65 (1.65) ^{1/} 20 (0.51) ^{2/}
Durability (cycles)	5,000	1,500	1,500

1/ Measured at the thickest point of the patterned surface.

2/ Measured at the thinnest point of the patterned surface.

The pavement marking tape, when applied according to the manufacturer's recommended procedures, shall be weather resistant and shall show no appreciable fading, lifting, or shrinkage during the useful life of the marking. The tape, as applied, shall be of good appearance, free of cracks, and edges shall be true, straight, and unbroken.

(f) Sampling and Inspection.

- (1) Sample. Prior to approval and use of Type IV pavement marking tape, the manufacturer shall submit a notarized certification from an independent laboratory, together with the results of all tests, stating that the material meets the requirements as set forth herein. The independent laboratory test report shall state the lot tested, the manufacturer's name, and the date of manufacture.

After initial approval by the Department, samples and certification by the manufacturer shall be submitted for each subsequent batch of Type IV tape used. The manufacturer shall submit a certification stating that the material meets the requirements as set forth herein and is essentially identical to the material sent for qualification. The certification shall state the lot tested, the manufacturer's name, and the date of manufacture.

- (2) Inspection. The Contractor shall provide a manufacturer's certification to the Engineer stating the material meets all requirements of this specification. All material samples for acceptance tests shall be taken or witnessed by a representative of the Bureau of Materials and shall be submitted to the Engineer of Materials, 126 East Ash Street, Springfield, Illinois 62704-4766 at least 30 days in advance of the pavement marking operations."

SUBCONTRACTOR AND DBE PAYMENT REPORTING (BDE)

Effective: April 2, 2018

Add the following to Section 109 of the Standard Specifications.

"109.14 Subcontractor and Disadvantaged Business Enterprise Payment Reporting.
The Contractor shall report all payments made to the following parties:

- (a) first tier subcontractors;
- (b) lower tier subcontractors affecting disadvantaged business enterprise (DBE) goal credit;
- (c) material suppliers or trucking firms that are part of the Contractor's submitted DBE utilization plan.

The report shall be made through the Department's on-line subcontractor payment reporting system within 21 days of making the payment."

SUBCONTRACTOR MOBILIZATION PAYMENTS (BDE)

Effective: November 2, 2017
Revised: April 1, 2019

Replace the second paragraph of Article 109.12 of the Standard Specifications with the following:

“This mobilization payment shall be made at least seven days prior to the subcontractor starting work. The amount paid shall be at the following percentage of the amount of the subcontract reported on form BC 260A submitted for the approval of the subcontractor’s work.

Value of Subcontract Reported on Form BC 260A	Mobilization Percentage
Less than \$10,000	25%
\$10,000 to less than \$20,000	20%
\$20,000 to less than \$40,000	18%
\$40,000 to less than \$60,000	16%
\$60,000 to less than \$80,000	14%
\$80,000 to less than \$100,000	12%
\$100,000 to less than \$250,000	10%
\$250,000 to less than \$500,000	9%
\$500,000 to \$750,000	8%
Over \$750,000	7%”

SUBMISSION OF PAYROLL RECORDS (BDE)

Effective: April 1, 2021

Revised: November 2, 2023

FEDERAL AID CONTRACTS. Revise the following section of Check Sheet #1 of the Recurring Special Provisions to read:

“STATEMENTS AND PAYROLLS

The payroll records shall include the worker’s name, social security number, last known address, telephone number, email address, classification(s) of work actually performed, hourly rates of wages paid (including rates of contributions or costs anticipated for bona fide fringe benefits or cash equivalents thereof), daily and weekly number of hours actually worked in total, deductions made, and actual wages paid.

The Contractor and each subcontractor shall submit certified payroll records to the Department each week from the start to the completion of their respective work, except that full social security numbers, last known addresses, telephone numbers, and email addresses shall not be included on weekly submittals. Instead, the payrolls need only include an identification number for each employee (e.g., the last four digits of the employee’s social security number). The submittals shall be made using LCPTracker Pro software. The software is web-based and can be accessed at <https://lcptracker.com/>. When there has been no activity during a work week, a payroll record shall still be submitted with the appropriate option (“No Work”, “Suspended”, or “Complete”) selected.”

STATE CONTRACTS. Revise Item 3 of Section IV of Check Sheet #5 of the Recurring Special Provisions to read:

- “3. Submission of Payroll Records. The Contractor and each subcontractor shall, no later than the 15th day of each calendar month, file a certified payroll for the immediately preceding month to the Illinois Department of Labor (IDOL) through the Illinois Prevailing Wage Portal in compliance with the State Prevailing Wage Act (820 ILCS 130). The portal can be found on the IDOL website at <https://www2.illinois.gov/idol/Laws-Rules/CONMED/Pages/Prevailing-Wage-Portal.aspx>. Payrolls shall be submitted in the format prescribed by the IDOL.

In addition to filing certified payroll(s) with the IDOL, the Contractor and each subcontractor shall certify and submit payroll records to the Department each week from the start to the completion of their respective work, except that full social security numbers shall not be included on weekly submittals. Instead, the payrolls shall include an identification number for each employee (e.g., the last four digits of the employee’s social security number). In addition, starting and ending times of work each day may be omitted from the payroll records submitted. The submittals shall be made using LCPTracker Pro software. The software is web-based and can be accessed at <https://lcptracker.com/>. When there has been no activity during a work week, a payroll record shall still be submitted with the appropriate option (“No Work”, “Suspended”, or “Complete”) selected.”

IDOT TRAINING PROGRAM GRADUATE ON-THE-JOB TRAINING SPECIAL PROVISION

Effective: August 1, 2012

Revised: February 2, 2017

In addition to the Contractor’s equal employment opportunity (EEO) affirmative action efforts undertaken as required by this Contract, the Contractor is encouraged to participate in the incentive program described below to provide additional on-the-job training to certified graduates of the IDOT pre-apprenticeship training program, as outlined in this Special Provision.

IDOT funds, and various Illinois community colleges operate, pre-apprenticeship training programs throughout the State to provide training and skill-improvement opportunities to promote the increased employment of minority groups, disadvantaged persons and women in all aspects of the highway construction industry. The intent of this IDOT Pre-Apprenticeship Training Program Graduate (TPG) special provision (Special Provision) is to place these certified program graduates on the project site for this Contract in order to provide the graduates with meaningful on-the-job training. Pursuant to this Special Provision, the Contractor must make every reasonable effort to recruit and employ certified TPG trainees to the extent such individuals are available within a practicable distance of the project site.

Specifically, participation of the Contractor or its subcontractor in the Program entitles the participant to reimbursement for graduates’ hourly wages at \$15.00 per hour per utilized TPG trainee, subject to the terms of this Special Provision. Reimbursement payment will be made even though the Contractor or subcontractor may also receive additional training program funds from other non-IDOT sources for other non-TPG trainees on the Contract, provided such other source does not specifically prohibit the Contractor or subcontractor from receiving reimbursement from another entity through another program, such as IDOT through the TPG program. With regard to any IDOT funded construction training program other than TPG, however, additional reimbursement for other IDOT programs will not be made beyond the TPG Program described in this Special Provision when the TPG Program is utilized.

No payment will be made to the Contractor if the Contractor or subcontractor fails to provide the required on-site training to TPG trainees, as solely determined by IDOT. A TPG trainee must begin training on the project as soon as the start of work that utilizes the relevant trade skill and the TPG trainee must remain on the project site through completion of the Contract, so long as training opportunities continue to exist in the relevant work classification. Should a TPG trainee's employment end in advance of the completion of the Contract, the Contractor must promptly notify the IDOT District EEO Officer for the Contract that the TPG's involvement in the Contract has ended. The Contractor must supply a written report for the reason the TPG trainee involvement terminated, the hours completed by the TPG trainee on the Contract, and the number of hours for which the incentive payment provided under this Special Provision will be, or has been claimed for the separated TPG trainee.

Finally, the Contractor must maintain all records it creates as a result of participation in the Program on the Contract, and furnish periodic written reports to the IDOT District EEO Officer that document its contractual performance under and compliance with this Special Provision. Finally, through participation in the Program and reimbursement of wages, the Contractor is not relieved of, and IDOT has not waived, the requirements of any federal or state labor or employment law applicable to TPG workers, including compliance with the Illinois Prevailing Wage Act.

Method of Measurement: The unit of measurement is in hours.

Basis of Payment: This work will be paid for at the contract unit price of \$15.00 per hour for each utilized certified TPG Program trainee (TRAINEES TRAINING PROGRAM GRADUATE). The estimated total number of hours, unit price, and total price must be included in the schedule of prices for the Contract submitted by Contractor prior to beginning work. The initial number of TPG trainees for which the incentive is available for this contract is 5.

The Department has contracted with several educational institutions to provide screening, tutoring and pre-training to individuals interested in working as a TPG trainee in various areas of common construction trade work. Only individuals who have successfully completed a Pre-Apprenticeship Training Program at these IDOT approved institutions are eligible to be TPG trainees. To obtain a list of institutions that can connect the Contractor with eligible TPG trainees, the Contractor may contact: HCCTP TPG Program Coordinator, Office of Business and Workforce Diversity (IDOT OBWD), Room 319, Illinois Department of Transportation, 2300 S. Dirksen Parkway, Springfield, Illinois 62764. Prior to commencing construction with the utilization of a TPG trainee, the Contractor must submit documentation to the IDOT District EEO Officer for the Contract that provides the names and contact information of the TPG trainee(s) to be trained in each selected work classification, proof that that the TPG trainee(s) has successfully completed a Pre-Apprenticeship Training Program, proof that the TPG is in an Apprenticeship Training Program approved by the U.S. Department of Labor Bureau of Apprenticeship Training, and the start date for training in each of the applicable work classifications.

To receive payment, the Contractor must provide training opportunities aimed at developing a full journeyworker in the type of trade or job classification involved. During the course of performance of the Contract, the Contractor may seek approval from the IDOT District EEO Officer to employ additional eligible TPG trainees. In the event the Contractor subcontracts a portion of the contracted work, it must determine how many, if any, of the TPGs will be trained by the subcontractor. Though a subcontractor may conduct training, the Contractor retains the responsibility for meeting all requirements imposed by this Special Provision. The Contractor must also include this Special Provision in any subcontract where payment for contracted work performed by a TPG trainee will be passed on to a subcontractor.

Training through the Program is intended to move TPGs toward journeyman status, which is the primary objective of this Special Provision. Accordingly, the Contractor must make every effort to enroll TPG trainees by recruitment through the Program participant educational institutions to the extent eligible TPGs are available within a reasonable geographic area of the project. The Contractor is responsible for demonstrating, through documentation, the recruitment efforts it has undertaken prior to the determination by IDOT whether the Contractor is in compliance with this Special Provision, and therefore, entitled to the Training Program Graduate reimbursement of \$15.00 per hour.

Notwithstanding the on-the-job training requirement of this TPG Special Provision, some minimal off-site training is permissible as long as the offsite training is an integral part of the work of the contract, and does not compromise or conflict with the required on-site training that is central to the purpose of the Program. No individual may be employed as a TPG trainee in any work classification in which he/she has previously successfully completed a training program leading to journeyman status in any trade, or in which he/she has worked at a journeyman level or higher.

VEHICLE AND EQUIPMENT WARNING LIGHTS (BDE)

Effective: November 1, 2021
Revised: November 1, 2022

Add the following paragraph after the first paragraph of Article 701.08 of the Standard Specifications:

“The Contractor shall equip all vehicles and equipment with high-intensity oscillating, rotating, or flashing, amber or amber-and-white, warning lights which are visible from all directions. In accordance with 625 ILCS 5/12-215, the lights may only be in operation while the vehicle or equipment is engaged in construction operations.”

WEEKLY DBE TRUCKING REPORTS (BDE)

Effective: June 2, 2012

Revised: November 1, 2021

The Contractor shall submit a weekly report of Disadvantaged Business Enterprise (DBE) trucks hired by the Contractor or subcontractors (i.e. not owned by the Contractor or subcontractors) that are used for DBE goal credit.

The report shall be submitted to the Engineer on Department form “SBE 723” within ten business days following the reporting period. The reporting period shall be Sunday through Saturday for each week reportable trucking activities occur.

Any costs associated with providing weekly DBE trucking reports shall be considered as included in the contract unit prices bid for the various items of work involved and no additional compensation will be allowed.

WORK ZONE TRAFFIC CONTROL DEVICES (BDE)

Effective: March 2, 2020

Add the following to Article 701.03 of the Standard Specifications:

“(q) Temporary Sign Supports1106.02”

Revise the third paragraph of Article 701.14 of the Standard Specifications to read:

“For temporary sign supports, the Contractor shall provide a FHWA eligibility letter for each device used on the contract. The letter shall provide information for the set-up and use of the device as well as a detailed drawing of the device. The signs shall be supported within 20 degrees of vertical. Weights used to stabilize signs shall be attached to the sign support per the manufacturer’s specifications.”

Revise the first paragraph of Article 701.15 of the Standard Specifications to read:

“**701.15 Traffic Control Devices.** For devices that must meet crashworthiness standards, the Contractor shall provide a manufacturer’s self-certification or a FHWA eligibility letter for each Category 1 device and a FHWA eligibility letter for each Category 2 and Category 3 device used on the contract. The self-certification or letter shall provide information for the set-up and use of the device as well as a detailed drawing of the device.”

Revise the first six paragraphs of Article 1106.02 of the Standard Specifications to read:

“**1106.02 Devices.** Work zone traffic control devices and combinations of devices shall meet crashworthiness standards for their respective categories. The categories are as follows.

Category 1 includes small, lightweight, channelizing and delineating devices that have been in common use for many years and are known to be crashworthy by crash testing of similar devices or years of demonstrable safe performance. These include cones, tubular markers, plastic drums, and delineators, with no attachments (e.g. lights). Category 1 devices manufactured after December 31, 2019 shall be MASH-16 compliant. Category 1 devices manufactured on or before December 31, 2019, and compliant with NCHRP 350 or MASH 2009, may be used on contracts let before December 31, 2024.

Category 2 includes devices that are not expected to produce significant vehicular velocity change but may otherwise be hazardous. These include vertical panels with lights, barricades, temporary sign supports, and Category 1 devices with attachments (e.g. drums with lights). Category 2 devices manufactured after December 31, 2019 shall be MASH-16 compliant. Category 2 devices manufactured on or before December 31, 2019, and compliant with NCHRP 350 or MASH 2009, may be used on contracts let before December 31, 2024.

Category 3 includes devices that are expected to cause significant velocity changes or other potentially harmful reactions to impacting vehicles. These include crash cushions (impact attenuators), truck mounted attenuators, and other devices not meeting the definitions of Category 1 or 2. Category 3 devices manufactured after December 31, 2019 shall be MASH-16 compliant. Category 3 devices manufactured on or before December 31, 2019, and compliant with NCHRP 350 or MASH 2009, may be used on contracts let before December 31, 2029. Category 3 devices shall be crash tested for Test Level 3 or the test level specified.

Category 4 includes portable or trailer-mounted devices such as arrow boards, changeable message signs, temporary traffic signals, and area lighting supports. It is preferable for Category 4 devices manufactured after December 31, 2019 to be MASH-16 compliant; however, there are currently no crash tested devices in this category, so it remains exempt from the NCHRP 350 or MASH compliance requirement.

For each type of device, when no more than one MASH-16 compliant is available, an NCHRP 350 or MASH-2009 compliant device may be used, even if manufactured after December 31, 2019.”

Revise Articles 1106.02(g), 1106.02(k), and 1106.02(l) to read:

“(g) Truck Mounted/Trailer Mounted Attenuators. The attenuator shall be approved for use at Test Level 3. Test Level 2 may be used for normal posted speeds less than or equal to 45 mph.

(k) Temporary Water Filled Barrier. The water filled barrier shall be a lightweight plastic shell designed to accept water ballast and be on the Department’s qualified product list.

Shop drawings shall be furnished by the manufacturer and shall indicate the deflection of the barrier as determined by acceptance testing; the configuration of the barrier in that test; and the vehicle weight, velocity, and angle of impact of the deflection test. The Engineer shall be provided one copy of the shop drawings.

(l) Movable Traffic Barrier. The movable traffic barrier shall be on the Department’s qualified product list.

Shop drawings shall be furnished by the manufacturer and shall indicate the deflection of the barrier as determined by acceptance testing; the configuration of the barrier in that test; and the vehicle weight, velocity, and angle of impact of the deflection test. The Engineer shall be provided one copy of the shop drawings. The barrier shall be capable of being moved on and off the roadway on a daily basis.”

WORKING DAYS (BDE)

Effective: January 1, 2002

The Contractor shall complete the work within **50** working days.

REVISIONS TO THE ILLINOIS PREVAILING WAGE RATES

The Prevailing rates of wages are included in the Contract proposals which are subject to Check Sheet #5 of the Supplemental Specifications and Recurring Special Provisions. The rates have been ascertained and certified by the Illinois Department of Labor for the locality in which the work is to be performed and for each craft or type of work or mechanic needed to execute the work of the Contract. As required by Prevailing Wage Act (820 ILCS 130/0.01, et seq.) and Check Sheet #5 of the Contract, not less than the rates of wages ascertained by the Illinois Department of Labor and as revised during the performance of a Contract shall be paid to all laborers, workers and mechanics performing work under the Contract. Post the scale of wages in a prominent and easily accessible place at the site of work.

If the Illinois Department of Labor revises the prevailing rates of wages to be paid as listed in the specification of rates, the contractor shall post the revised rates of wages and shall pay not less than the revised rates of wages. Current wage rate information shall be obtained by visiting the Illinois Department of Labor web site at <http://www.state.il.us/agency/idol/> or by calling 312-793-2814. It is the responsibility of the contractor to review the rates applicable to the work of the contract at regular intervals in order to insure the timely payment of current rates. Provision of this information to the contractor by means of the Illinois Department of Labor web site satisfies the notification of revisions by the Department to the contractor pursuant to the Act, and the contractor agrees that no additional notice is required. The contractor shall notify each of its subcontractors of the revised rates of wages.