

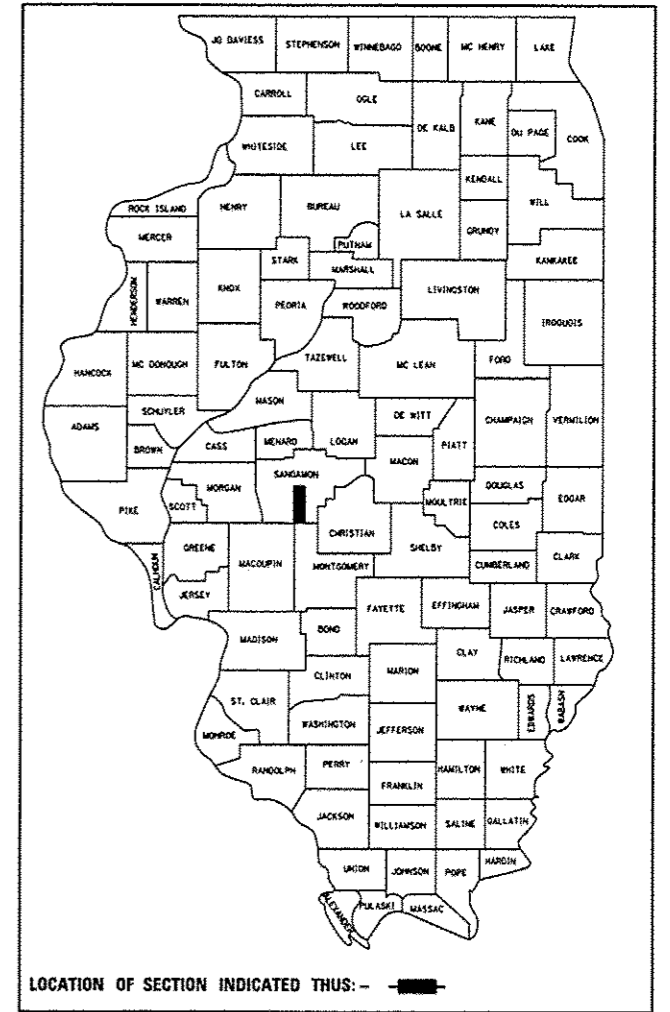
STATE OF ILLINOIS
DEPARTMENT OF TRANSPORTATION
DIVISION OF HIGHWAYS
PROPOSED
CONTRACT MAINTENANCE

FOR INDEX OF SHEETS, SEE SHEET NO. 2

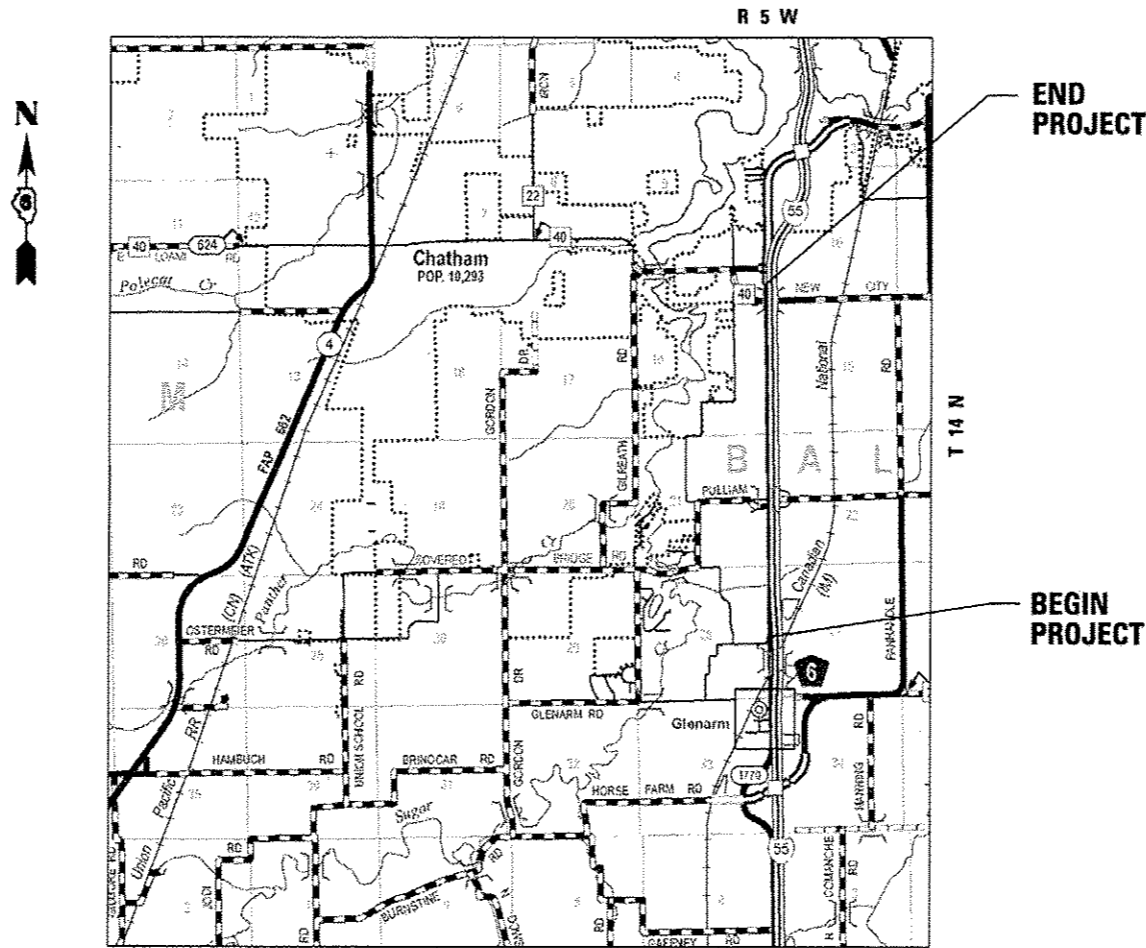
FAU 8159 (PALM RD)
SECTION (110X-3) RS-7
PROJECT CAPE SEAL
SANGAMON COUNTY

F.A.U. RTE.	SECTION	COUNTY	TOTAL SHEETS	SHEET NO.
8159	(110X-3) RS-7	SANGAMON	5	1
FED. ROAD DIST. NO.		ILLINOIS	CONTRACT NO. 72G34	

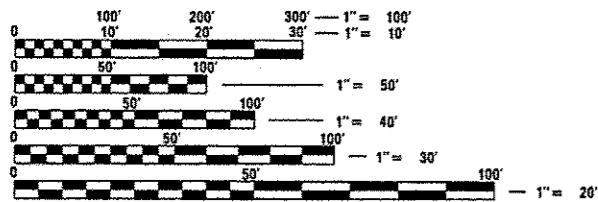
D-96-070-13



C-96-070-13



ADT = 1,700(2012)
 SU = 130
 MU = 20



FULL SIZE PLANS HAVE BEEN PREPARED USING STANDARD ENGINEERING SCALES. REDUCED SIZED PLANS WILL NOT CONFORM TO STANDARD SCALES. IN MAKING MEASUREMENTS ON REDUCED PLANS, THE ABOVE SCALES MAY BE USED.

J.U.L.I.E.
 JOINT UTILITY LOCATION INFORMATION FOR EXCAVATION
 1-800-892-0123
 OR 811

PLAN AND CONTRACT TECHNICIAN
 TIMOTHY SHARP (217)782-7743

CONTRACT NO. 72G34

NET LENGTH = 13,781.00 FT. = 2.610 MILES

STATE OF ILLINOIS
 DEPARTMENT OF TRANSPORTATION
 DIVISION OF HIGHWAYS

SUBMITTED July 15 2013
Raymond L. Priskell
 DEPUTY DIRECTOR OF HIGHWAYS, REGION ENGINEER
Aug 16 2013
John D. Baranelli, P.E.
 ENGINEER OF DESIGN AND ENVIRONMENT
Aug 16 2013
Onesmo Osman, P.E.
 DIRECTOR OF HIGHWAYS, CHIEF ENGINEER

**PRINTED BY THE AUTHORITY
 OF THE STATE OF ILLINOIS**

INDEX OF SHEETS

1. COVER
2. INDEX OF SHEETS, GENERAL NOTES, AND HIGHWAY STANDARDS
3. SUMMARY OF QUANTITIES
4. LOCATION MAP
5. TYPICAL SECTIONS

HIGHWAY STANDARDS

- 701001-02 OFF-RD OPERATIONS, 2L, 2W, MORE THAN 15' AWAY FROM EDGE OF PAVEMENT
- 701006-04 OFF-RD OPERATIONS, 2L, 2W, 15' TO 24" FROM EDGE OF PAVEMENT
- 701011-03 OFF-RD MOVING OPERATIONS, 2L, 2W, DAY ONLY
- 701201-04 LANE CLOSURE, 2L, 2W, DAY ONLY, FOR SPEEDS > 45 MPH
- 701301-04 LANE CLOSURE, 2L, 2W, SHORT TIME OPERATIONS
- 701306-03 LANE CLOSURE, 2L, 2W, SLOW MOVING OPERATIONS DAY ONLY, FOR SPEEDS > 45 MPH
- 701311-03 LANE CLOSURE, 2L, 2W, MOVING OPERATIONS DAY ONLY
- 701901-02 TRAFFIC CONTROL DEVICES
- 780001-03 TYPICAL PAVEMENT MARKINGS

GENERAL NOTES

1. ANY REFERENCE TO THE STANDARDS THROUGHOUT THE PLANS SHALL BE INTERPRETED TO BE THE LATEST STANDARDS OF THE DEPARTMENT AS INCLUDED IN THE PLANS.
2. NO EXCAVATION IS ANTICIPATED ON THIS PROJECT. SHOULD ANY EXCAVATION BE REQUIRED, J.U.L.I.E. SHALL BE NOTIFIED A MINIMUM OF 48 HOURS IN ADVANCE (800) 892-0123.
3. THE AGGREGATE GRADATION FOR THE A-1 BITUMINOUS SURFACE TREATMENT SHALL BE CA-16 OR CA-20.
4. AGGREGATE FOR THE A-1 BITUMINOUS SURFACE TREATMENT SHALL BE CRUSHED LIMESTONE.
5. SHORT-TERM PAVEMENT MARKING SHALL BE PAINT - TAPE WILL NOT BE ALLOWED.
6. PERMANENT PAVEMENT MARKINGS SHALL NOT BE APPLIED UNTIL 10 DAYS AFTER THE AGGREGATE HAS BEEN APPLIED.
7. THE CONTRACTOR SHALL GIVE IDOT OPERATIONS TWO WEEKS NOTICE PRIOR TO STARTING WORK IN ORDER FOR IDOT TO COMPLETE PATCHING.
8. THE AGGREGATE FOR MICRO-SURFACING SHALL MEET THE FRICTION AGGREGATE REQUIREMENTS FOR MIXTURE "C" IN ARTICLE 1009.03(a).

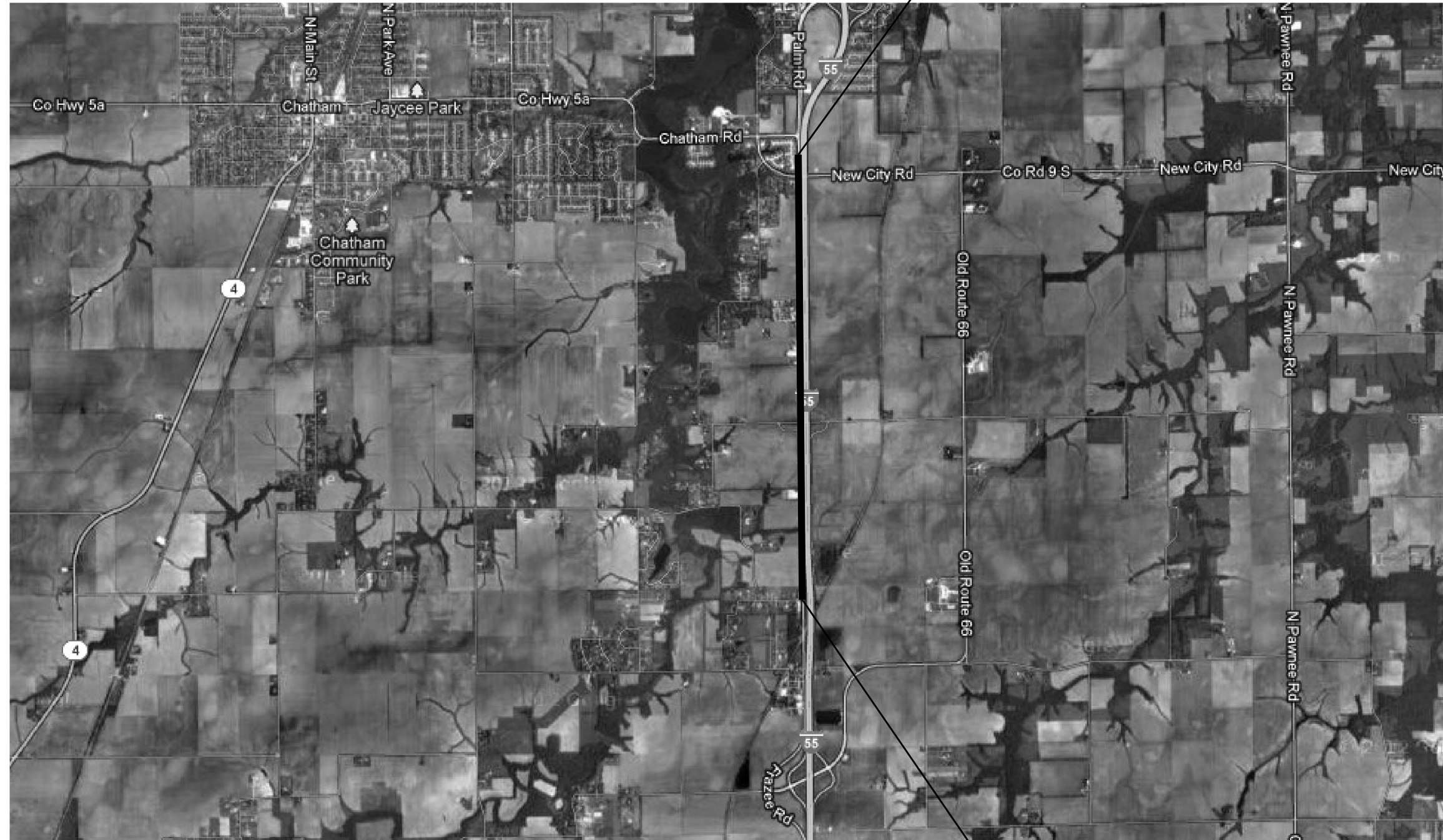
STATE OF ILLINOIS DEPARTMENT OF TRANSPORTATION DIVISION OF HIGHWAYS DISTRICT 6	
EXAMINED	July 8 20 13
<i>William B...</i> ENGINEER OF OPERATIONS	
EXAMINED	MAY 14 20 13
<i>Tommy Z...</i> ENGINEER OF PROJECT IMPLEMENTATION	
EXAMINED	May 17 20 13
<i>DRMLC</i> ENGINEER OF PROGRAM DEVELOPMENT	

FILE NAME *	USER NAME * shor-std	DESIGNED -	REVISED -	STATE OF ILLINOIS DEPARTMENT OF TRANSPORTATION	INDEX OF SHEETS, HIGHWAY STANDARDS AND GENERAL NOTES	F.A.U. RTE.	SECTION	COUNTY	TOTAL SHEETS	SHEET NO.
S:\CONTRACTMAINT\CA0\72G34 - FAU 0159 (PAL	H RD - CAPE SEAL\IND-STD-SIGM.dgn	DRAWN -	REVISED -			8159	(110X-3) RS-7	SANGAMON	5	2
Default	PLOT SCALE = 1.8888 7 / in.	CHECKED -	REVISED -		SCALE:					
	PLOT DATE = Jul-18-2013 06:29:07AM	DATE -	REVISED -		SHEET 1 OF 1 SHEETS	STA.	TO STA.			ILLINOIS FED. AID PROJECT
CONTRACT NO. 72G34										

CODE NO.	ITEM	UNIT	TOTAL QUANTITY	CONSTR. CODE
				100% STATE
				ROADWAY 0005 S. N.
67100100	MOBILIZATION	L SUM	1	1
70100450	TRAFFIC CONTROL AND PROTECTION, STANDARD 701201	L SUM	1	1
70100460	TRAFFIC CONTROL AND PROTECTION, STANDARD 701306	L SUM	1	1
* 70300100	SHORT-TERM PAVEMENT MARKING	FOOT	1,380	1,380
* 78001120	PAINT PAVEMENT MARKING - LINE 5"	FOOT	31,012	31,012
Z0064265	CAPE SEAL	SQ YD	36,750	36,750

*SPECIALTY ITEM

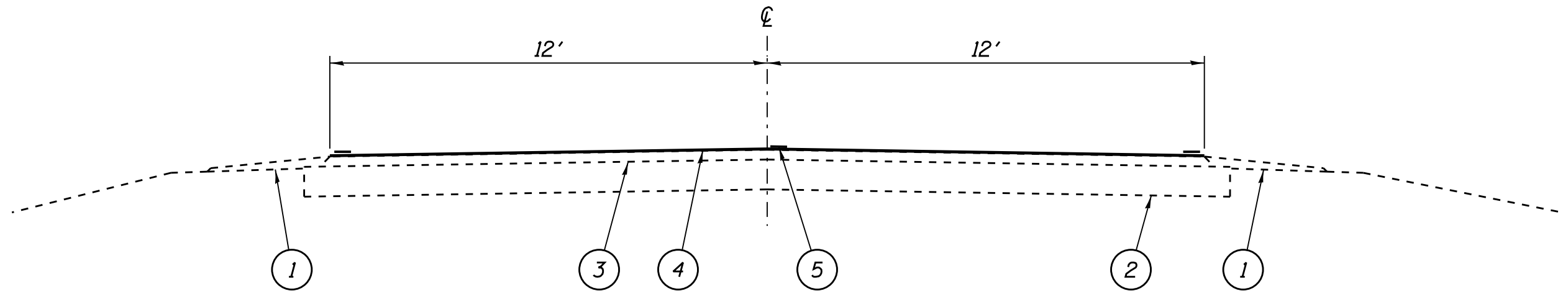
BEGIN PROJECT
WEST FRONTAGE
ROAD



END PROJECT
WEST FRONTAGE
ROAD

FILE NAME =	USER NAME = #USER#	DESIGNED -	REVISED -	STATE OF ILLINOIS DEPARTMENT OF TRANSPORTATION	LOCATION MAP		F.A.J. RTE.	SECTION	COUNTY	TOTAL SHEETS	SHEET NO.	
#FILE#		DRAWN -	REVISED -		SCALE: _____	SHEET 1 OF 1 SHEETS	STA. _____ TO STA. _____	8159	((10X-3) R5-7	SANGAMON	5	4
Default		CHECKED -	REVISED -									
	PLOT DATE = #DATE#	DATE -	REVISED -									
ILLINOIS FED. AID PROJECT												

CONTRACT NO. 72634



WEST FRONTRAGE ROAD

L E G E N D

- 1 - EXIST. AGGREGATE SHOULDERS, TYPE B
- 2 - EXIST. STABILIZED OR CONCRETE BASE COURSE
- 3 - EXIST. BITUMINOUS SURFACE
- 4 - PROP. CAPE SEAL
- 5 - PROP. PAINT PAVEMENT MARKING - LINE 5"

FILE NAME =	USER NAME = sharptd	DESIGNED -	REVISED -	STATE OF ILLINOIS DEPARTMENT OF TRANSPORTATION	TYPICAL SECTIONS			F.A.U. RTE.	SECTION	COUNTY	TOTAL SHEETS	SHEET NO.
S:\CONTRMAINT\CAD\72634 - FAU 8159 (PAL	RD) - CAPE SEAL\typsect.dgn	DRAWN -	REVISED -					8159	((10X-3) R5-7	SANGAMON	5	5
Default	PLOT SCALE = 3.0000' / in.	CHECKED -	REVISED -		SCALE: SHEET 1 OF 1 SHEETS STA. TO STA.			CONTRACT NO. 72634				
	PLOT DATE = Jul-18-2013 06:32:57AM	DATE -	REVISED -		ILLINOIS FED. AID PROJECT							