

F.A. RTE.	SECTION	COUNTY	TOTAL SHEETS	SHEET NO.
VAR D3 FACILITY PRESERVATION 2014-1			6	1
* IROQUOIS AND LIVINGSTON			CONTRACT NO. 66D04	

09-20-13 LETTING ITEM 038

INDEX OF SHEETS

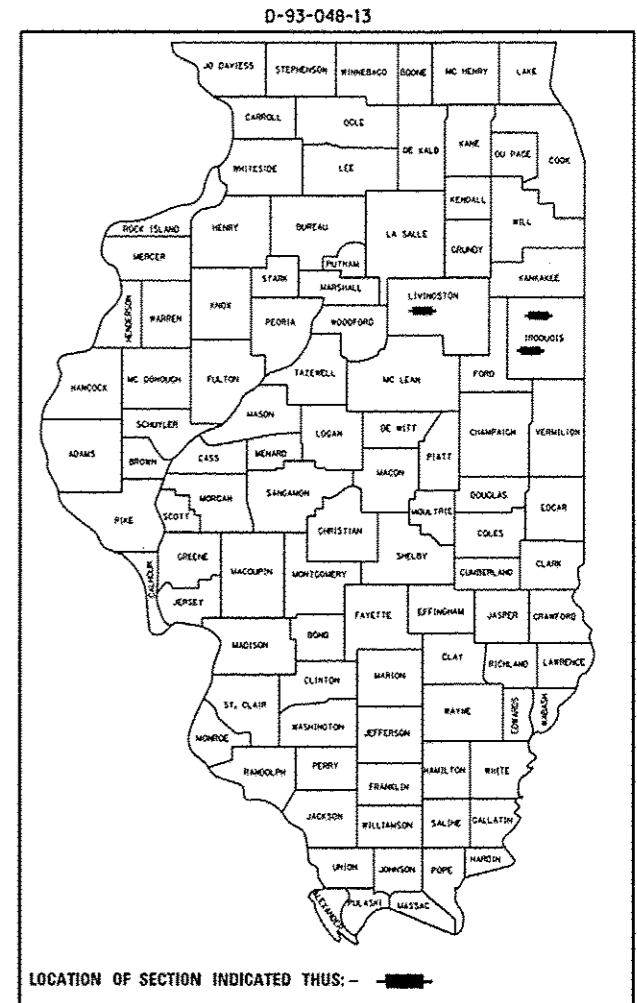
1. COVER SHEET
2. GENERAL NOTES
3. SUMMARY OF QUANTITIES
4. SITE PLAN - LOCATION 1, ASHKUM MAINTENANCE FACILITY
5. SITE PLAN - LOCATION 2, BUCKLEY MAINTENANCE FACILITY
6. SITE PLAN - LOCATION 3, PONTIAC MAINTENANCE FACILITY

STATE OF ILLINOIS  
DEPARTMENT OF TRANSPORTATION  
DIVISION OF HIGHWAYS

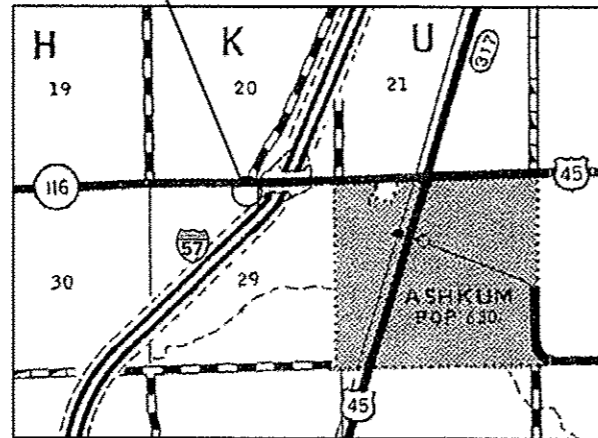
**PROPOSED  
HIGHWAY PLANS**

VARIOUS  
SECTION D3 FACILITY PRESERVATION 2014-1  
CLEANING AND PAINTING STEEL BUILDINGS  
IROQUOIS AND LIVINGSTON COUNTIES

C-93-103-13

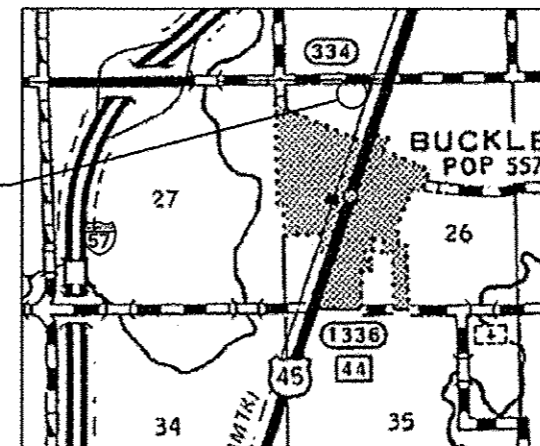


LOCATION 1  
ASHKUM MAINTENANCE FACILITY  
849 E. IL ROUTE 116



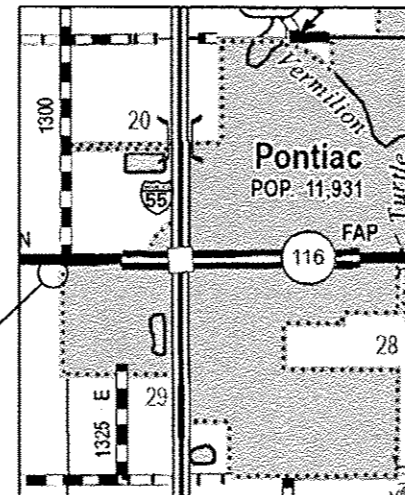
IROQUOIS COUNTY

LOCATION 2  
BUCKLEY MAINTENANCE FACILITY  
435 E. 800 N. ROAD

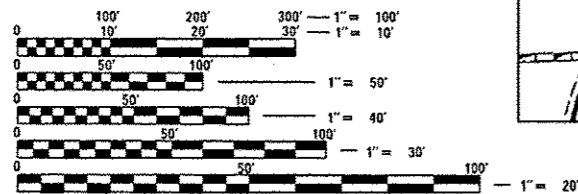


IROQUOIS COUNTY

LOCATION 3  
PONTIAC MAINTENANCE FACILITY  
12970 E. IL ROUTE 116



LIVINGSTON COUNTY



FULL SIZE PLANS HAVE BEEN PREPARED USING STANDARD ENGINEERING SCALES. REDUCED SIZED PLANS WILL NOT CONFORM TO STANDARD SCALES. IN MAKING MEASUREMENTS ON REDUCED PLANS, THE ABOVE SCALES MAY BE USED.

J.U.L.I.E.  
JOINT UTILITY LOCATION INFORMATION FOR EXCAVATION  
1-800-892-0123  
OR 811

PROJECT ENGINEER: JOE KANNEL P.E.  
PROJECT MANAGER: RON WOODSHANK  
TOWNSHIP: VARIOUS

CONTRACT NO. 66D04

STATE OF ILLINOIS  
DEPARTMENT OF TRANSPORTATION  
DIVISION OF HIGHWAYS

SUBMITTED 7-10 2013  
Paul A. Lachon  
DEPUTY DIRECTOR OF HIGHWAYS, REGION ENGINEER

Aug 16 2013  
John D. Baranzelli P.E.  
ENGINEER OF DESIGN AND ENVIRONMENT

Aug 16 2013  
Omer Osman P.E.  
DIRECTOR OF HIGHWAYS, CHIEF ENGINEER

PRINTED BY THE AUTHORITY  
OF THE STATE OF ILLINOIS

**GENERAL NOTES**

PLAN DIMENSIONS AND DETAILS RELATIVE TO EXISTING PLANS ARE SUBJECT TO ROUTINE VARIATIONS. THE CONTRACTOR SHALL FIELD VERIFY EXISTING DIMENSIONS AND DETAILS AFFECTING NEW CONSTRUCTION AND MAKE NECESSARY APPROVED ADJUSTMENTS PRIOR TO CONSTRUCTION OR ORDERING OF MATERIALS. SUCH VARIATIONS SHALL NOT BE CAUSE FOR ADDITIONAL COMPENSATION FOR A CHANGE IN THE SCOPE OF THE WORK. HOWEVER, THE CONTRACTOR WILL BE PAID FOR THE QUANTITY FURNISHED BASED UPON THE UNIT BID FOR THE WORK.

FOR STABILIZATION, ALL TYPE III BARRICADES SHALL REQUIRE A MINIMUM OF FOUR SAND BAGS PER BARRICADE.

THE CONTRACTOR SHALL BE RESPONSIBLE FOR PROTECTING UTILITY PROPERTY FROM CONSTRUCTION OPERATIONS AS OUTLINED IN ARTICLE 107.31 OF THE STANDARD SPECIFICATIONS. THE "JULIE" NUMBER IS 1-800-892-0123. A MINIMUM OF FORTY-EIGHT (48) HOURS ADVANCE NOTICE IS REQUIRED.

ANY REFERENCE TO A STANDARD IN THESE PLANS SHALL BE INTERPRETED TO MEAN THE EDITION AS INDICATED BY THE SUBNUMBER LISTED ON THE INDEX OF SHEETS OR THE COPY OF THE STANDARD INCLUDED IN THESE PLANS.

THE CONTRACTOR SHALL BE REQUIRED TO SECURE WASTE CONTAINERS THAT REMAIN ON THE JOB SITE. THIS WILL ENTAIL THAT ALL WASTE CONTAINERS CAN NOT BE MOVED OR OPENED DURING NON-WORKING HOURS.

WORKING DAYS SHALL BE CHARGED UNTIL THE CONTRACTOR/ SUBCONTRACTOR LICENSED TO DISPOSE OF LEAD PAINT RESIDUE HAS REMOVED THE WASTE MATERIAL FROM THE JOB SITE ACCORDING TO ALL FEDERAL, STATE AND LOCAL LAWS AND ORDINANCES.

THE EXISTING STEEL CONTAINS LEAD. THE CONTRACTOR SHOULD TAKE APPROPRIATE PRECAUTIONS TO DEAL WITH THE PRESENCE OF LEAD PAINT ON THIS PROJECT.

THE SSPC-OP1 AND SSPC-OP2 PAINTING CONTRACTOR CERTICATIONS WILL BE REQUIRED FOR THIS PROJECT.

THE CLEANING AND PAINTING OF THE EXISTING STEEL SHALL BE AS SPECIFIED IN THE SPECIAL PROVISION FOR "CLEANING AND PAINTING EXISTING STEEL BUILDINGS".

ALL EXISTING EXTERIOR STEEL, INCLUDING WALLS, DOORS, TRIM WORK, GUTTERS AND ROOFS SHALL BE CLEANED PER "LOW PRESSURE WATER CLEANING" SSPC-SP12. ALL EXISTING EXTERIOR STEEL INCLUDING WALLS, DOORS, TRIM WORK GUTTERS AND ROOFS SHALL BE PAINTED WITH AN APPROVED GALVANIZED METAL PRIMER OR ACRYLIC PRIMER SUITABLE FOR METAL AND TWO (2) COATS OF AN APPROVED "ACRYLIC PAINT". THE COLOR OF THE FINAL FINISH COAT FOR THE EXTERIOR WALLS SHALL BE "TAN". THE COLOR OF THE FINAL FINISH COAT FOR DOORS, WINDOWS AND ROOFS SHALL BE "WHITE". THE FINAL FINISH COAT FOR ALL TRIM WORK SHALL BE DARK BROWN. ALL PAINT MATERIALS SHALL BE APPROVED BY THE ENGINEER PRIOR TO THE ORDERING OF MATERIALS.

DATE: 7-9-13

PREPARED BY: Don Bonail  
DISTRICT STUDIES & PLANS ENGINEER

EXAMINED BY: Herb Jones  
DISTRICT CONSTRUCTION ENGINEER

Wynne Mullins  
DISTRICT MATERIALS ENGINEER

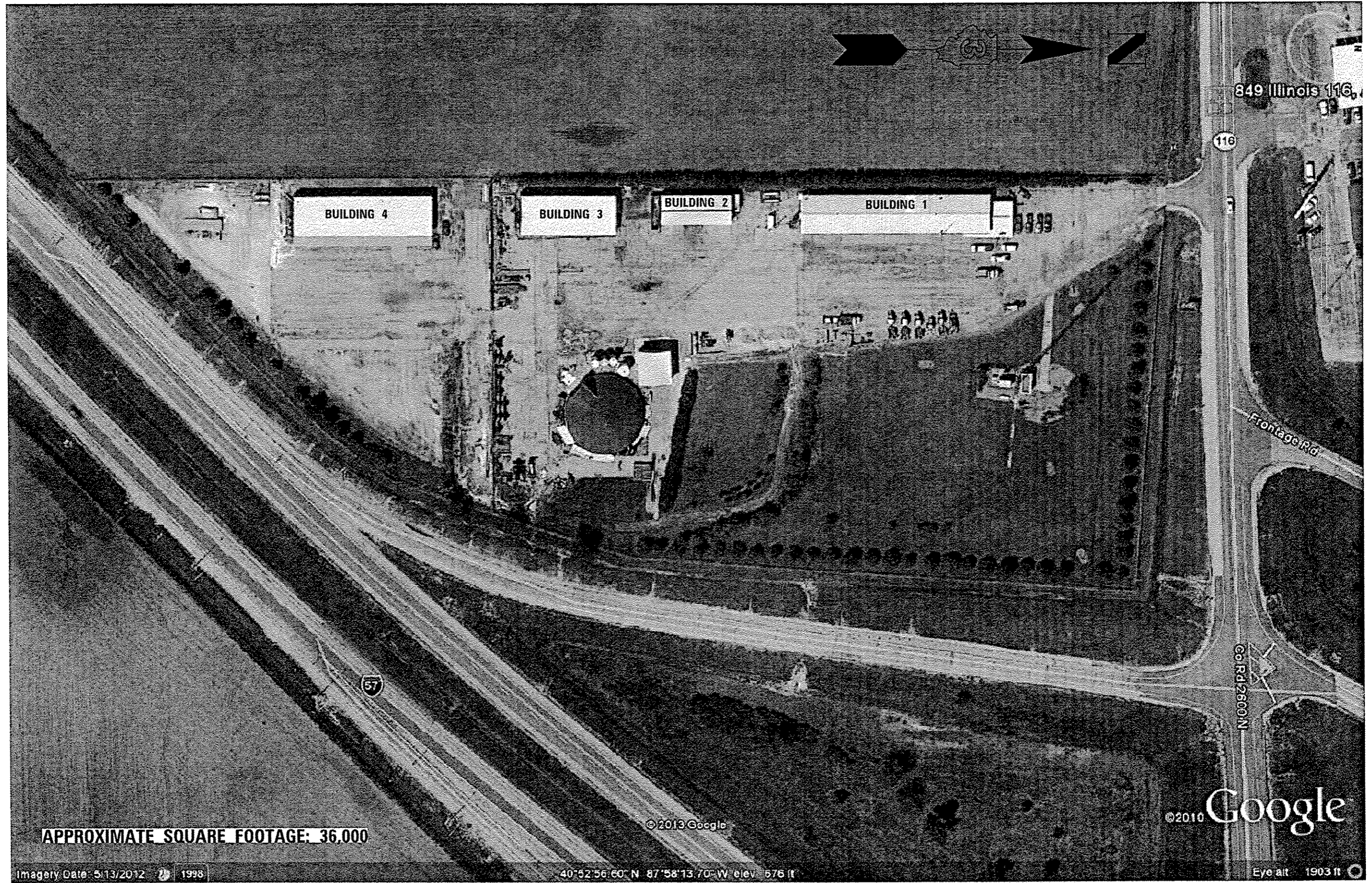
Bruce A. Huber  
DISTRICT OPERATIONS ENGINEER

FILE NAME =	USER NAME = woodshankr1	DESIGNED - RW	REVISED -	<b>STATE OF ILLINOIS DEPARTMENT OF TRANSPORTATION</b>	<b>GENERAL NOTES</b>	F.A. RTE.	SECTION	COUNTY	TOTAL SHEETS	SHEET NO.
c:\pwork\pido\woodshankr1\0336544\366004\shc\details.dgn	DRAWN - RW	REVISED -	VAR			03 FACILITY PRESERVATION 2014-1	*	6	2	
#MODELNAME#	PLOT SCALE = 1/8"=1'-0" / in.	CHECKED -	REVISED -			* IROQUOIS AND LIVINGSTON			CONTRACT NO. 66D04	
	PLOT DATE = 7/2/2013	DATE -	REVISED -			ILLINOIS FED. AID PROJECT				
				SCALE:	SHEET 1 OF 1 SHEETS	STA.	TO STA.			

CONSTR. CODE  
 CDB FUNDS  
 100% STATE  
 ROADWAY  
 0044  
 RURAL  
 IROQUOIS      LIVINGSTON

CODE NO.	ITEM	UNIT	TOTAL QUANTITY	RURAL	
				IROQUOIS	LIVINGSTON
67100100	MOBILIZATION	L SUM	1	0.5	0.5
X0327632	CLEANING AND PAINTING STEEL BUILDING, LOCATION 1	L SUM	1	1	
X0327633	CLEANING AND PAINTING STEEL BUILDING, LOCATION 2	L SUM	1	1	
X0327634	CLEANING AND PAINTING STEEL BUILDING, LOCATION 3	L SUM	1		1
X0327635	CLEANING AND PAINTING STEEL BUILDING WARRANTY, LOCATION 1	L SUM	1	1	
X0327636	CLEANING AND PAINTING STEEL BUILDING WARRANTY, LOCATION 2	L SUM	1	1	
X0327637	CLEANING AND PAINTING STEEL BUILDING WARRANTY, LOCATION 3	L SUM	1		1
Z0007101	CONTAINMENT AND DISPOSAL OF LEAD PAINT CLEANING RESIDUES NO. 1	L SUM	1	1	
Z0007102	CONTAINMENT AND DISPOSAL OF LEAD PAINT CLEANING RESIDUES NO. 2	L SUM	1	1	
Z0007103	CONTAINMENT AND DISPOSAL OF LEAD PAINT CLEANING RESIDUES NO. 3	L SUM	1		1

10



APPROXIMATE SQUARE FOOTAGE: 36,000

© 2010 Google

Imagery Date: 5/13/2012 1998

40°52'56.60" N 87°58'13.70" W elev 576 ft

Eye alt 1903 ft

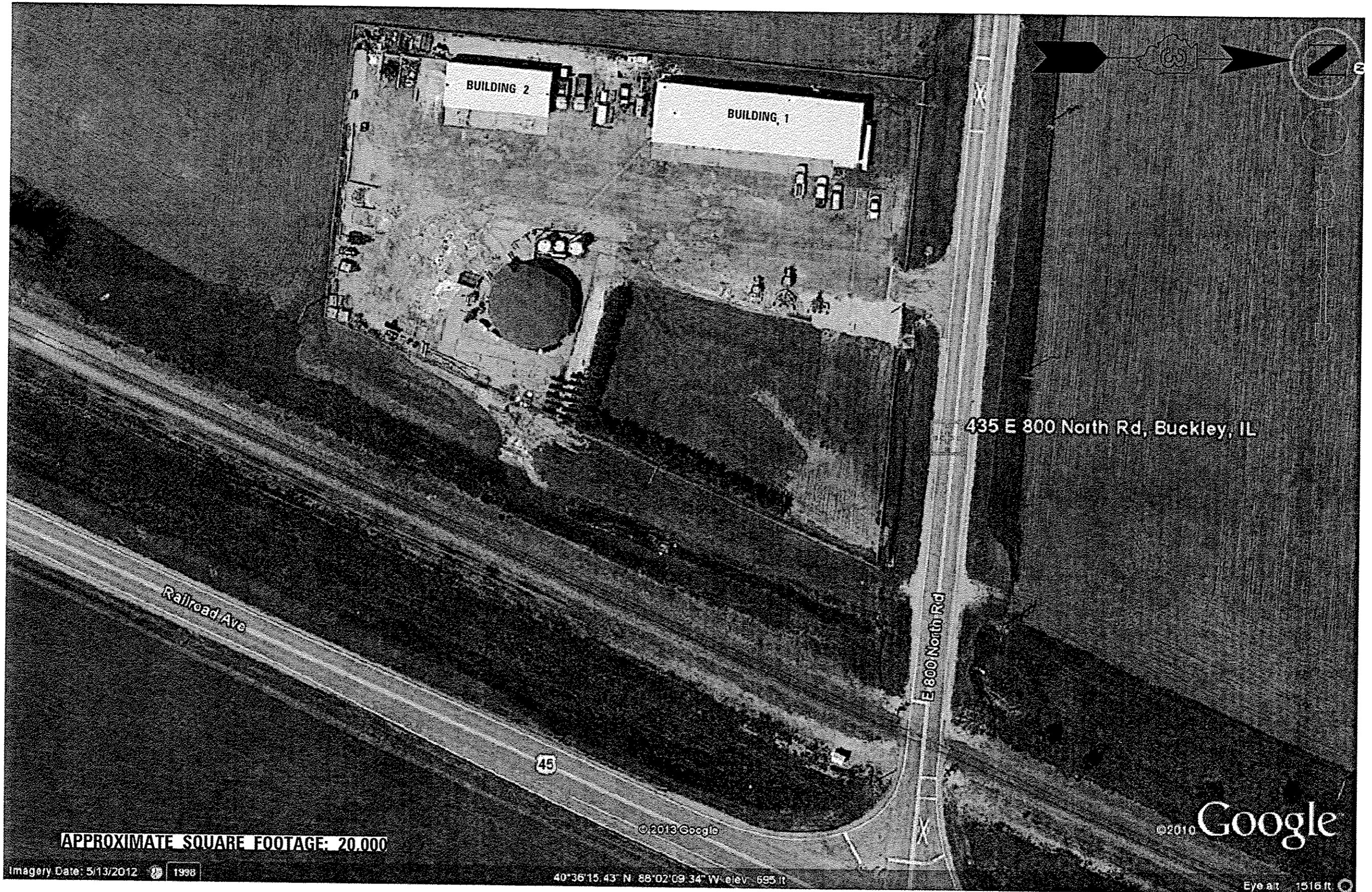
FILE NAME *	USER NAME *	DESIGNED - RW	REVISED -
c:\pwwork\pwwork\woodshenkr\1\08336544\366004\shtr-details.dgn	woodshenkr	DRAWN - RW	REVISED -
#MODELNAME*	PLOT SCALE *	CHECKED -	REVISED -
	1/8" = 1' / in.	DATE -	REVISED -
	PLOT DATE *		
	7/2/2013		

STATE OF ILLINOIS  
DEPARTMENT OF TRANSPORTATION

SITE PLAN - LOCATION 1  
ASHKUM MAINTENANCE FACILITY

SCALE: SHEET 1 OF 1 SHEETS STA. TO STA.

F.A. RTEL.	SECTION	COUNTY	TOTAL SHEETS	SHEET NO.
VAR 03	FACILITY PRESERVATION 2014-1	IRROQUOIS AND LIVINGSTON	6	4
* ILLINOIS FED. AID PROJECT			CONTRACT NO. 66D04	



**APPROXIMATE SQUARE FOOTAGE: 20,000**

Imagery Date: 5/13/2012 1998

40°36'15.43" N 88°02'09.34" W elev: 695 ft

FILE NAME :	USER NAME : woodshankr1	DESIGNED - RW	REVISED -
ci:\pw\work\pripod\woodshankr1\d0336544\	066024-shr\details.dgn	DRAWN - RW	REVISED -
*MODELNAME*	PLOT SCALE = 100.0000' / in.	CHECKED -	REVISED -
	PLOT DATE = 7/2/2013	DATE -	REVISED -

STATE OF ILLINOIS  
DEPARTMENT OF TRANSPORTATION

**SITE PLAN - LOCATION 2  
BUCKLEY MAINTENANCE FACILITY**

SCALE: SHEET 1 OF 1 SHEETS STA. TO STA.

F.A. RTE.	SECTION	COUNTY	TOTAL SHEETS	SHEET NO.
VAR 03 FACILITY PRESERVATION 2014-1		*	6	5
* IROQUOIS AND LIVINGSTON		CONTRACT NO. 66D04		
ILLINOIS FED. AID PROJECT				



APPROXIMATE SQUARE FOOTAGE: 40,000

©2013 Google

©2010 Google

Imagery Date: 8/21/2012 1998

40°52'20.46" N 88°40'54.30" W elev. 556 ft

Eye alt: 131.4 ft

FILE NAME =	USER NAME = woodshankr1	DESIGNED - RW	REVISED -	STATE OF ILLINOIS DEPARTMENT OF TRANSPORTATION	SITE PLAN - LOCATION 3 PONTIAC MAINTENANCE FACILITY	F.A. RTE.	SECTION	COUNTY	TOTAL SHEETS	SHEET NO.
c:\pwork\p\dot\woodshankr-1\d8336544\	266004*shd-details.dgn	DRAWN - RW	REVISED -			VAR	D3 FACILITY PRESERVATION 2014-1	*	6	6
#MODELNAME#	PLOT SCALE = 180.0000 ** in.	CHECKED -	REVISED -			*IROQUOIS AND LIVINGSTON		CONTRACT NO. 66004		
	PLOT DATE = 7/2/2013	DATE -	REVISED -			SCALE:	SHEET 1 OF 1 SHEETS	STA. TO STA.	ILLINOIS FED. AID PROJECT	