

F.A.S. RTE.	SECTION	COUNTY	TOTAL SHEETS	SHEET NO.
200	141B-2	WHITESIDE	77	1
		ILLINOIS	CONTRACT NO. 64D81	

D92-005-08



STATE OF ILLINOIS
DEPARTMENT OF TRANSPORTATION
DIVISION OF HIGHWAYS
**PROPOSED
HIGHWAY PLANS**

FAS ROUTE 200 (IL 172)
SECTION 141B-2
PROJECT: ACRS-0200(107)
BRIDGE REPLACEMENT
WHITESIDE COUNTY
C-92-127-10

FOR INDEX OF SHEETS, SEE SHEET 2

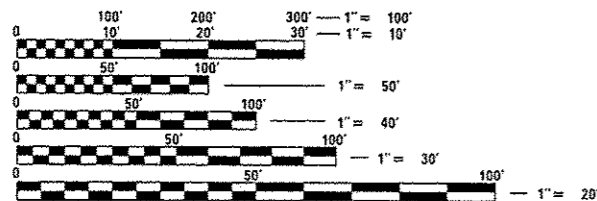
FOR LIST OF HIGHWAY STANDARDS, SEE SHEET 2

PREPARED BY:



ZROKA ENGINEERING, P.C.
LICENSE NO. 184-004783
4216 NORTH HERMITAGE
CHICAGO, IL 60613
TEL. 773-935-6376
CONTACT: DEBORAH ZROKA

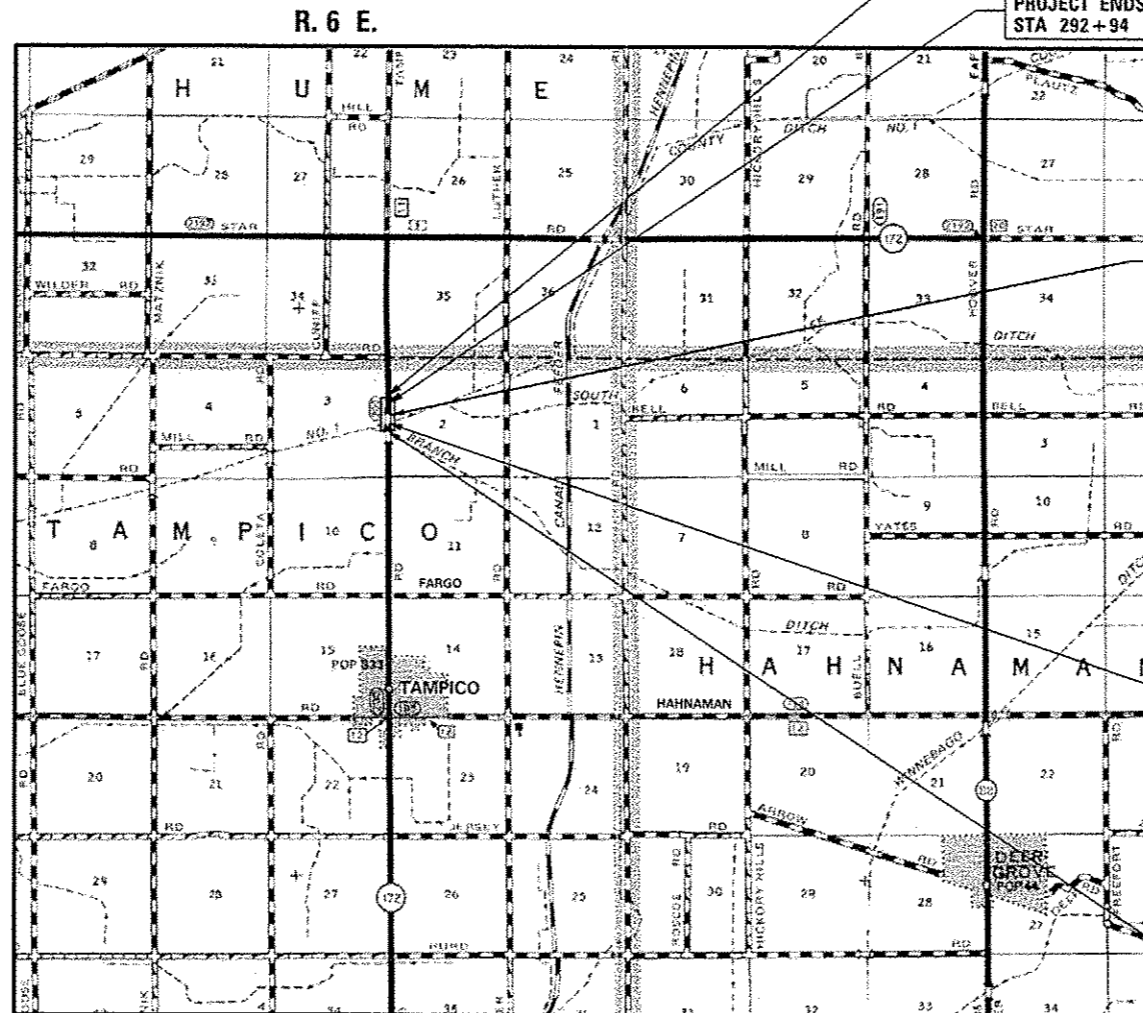
TAMPICO TOWNSHIP: SECTION 2 & 3



FULL SIZE PLANS HAVE BEEN PREPARED USING STANDARD ENGINEERING SCALES. REDUCED SIZED PLANS WILL NOT CONFORM TO STANDARD SCALES. IN MAKING MEASUREMENTS ON REDUCED PLANS, THE ABOVE SCALES MAY BE USED.

J.U.L.I.E.
JOINT UTILITY LOCATION INFORMATION FOR EXCAVATION
1-800-892-0123
OR 811

PROJECT ENGINEER JASON FORD (815) 284-5942
PROJECT MANAGER BECKY MARRUFFO (815) 284-5902
CONTRACT NO. 64D81



LOCATION MAP

TAMPICO TOWNSHIP
SCALE 1" = 0.8 MILE
GROSS LENGTH = 1107 FT. = 0.21 MILE
NET LENGTH = 882 FT. = 0.17 MILE

IMPROVMENT ENDS
STA 293+50

PROJECT ENDS
STA 292+94

REMOVAL OF EXISTING STRUCTURE NO. 098-0044 (SINGLE SPAN DECK BEAM BRIDGE ON CLOSED ABUTMENTS) AND CONSTRUCTION OF PROPOSED STRUCTURE NO. 098-0119 (SINGLE SPAN ROLLED STEEL BEAM BRIDGE ON SPILL THRU ABUTMENTS) AND ASSOCIATED ROADWAY IMPROVEMENTS

PROJECT BEGINS
STA 284+12

IMPROVMENT BEGINS
STA 282+43

STATE OF ILLINOIS
DEPARTMENT OF TRANSPORTATION
DIVISION OF HIGHWAYS

SUBMITTED June 27, 2013

Paul A. Latta
DEPUTY DIRECTOR OF HIGHWAYS, REGION ENGINEER

Aug 16, 2013
John D. Baranzelli, P.E.
ENGINEER OF DESIGN AND ENVIRONMENT

Aug 16, 2013
Orhan Osman, P.E.
DIRECTOR OF HIGHWAYS, CHIEF ENGINEER

APPLIES TO SHEETS 1-22 AND 65-77

Phil Curtis
062-044545
November 30, 2013
E.P.S.P.S.

PRINTED BY THE AUTHORITY OF THE STATE OF ILLINOIS