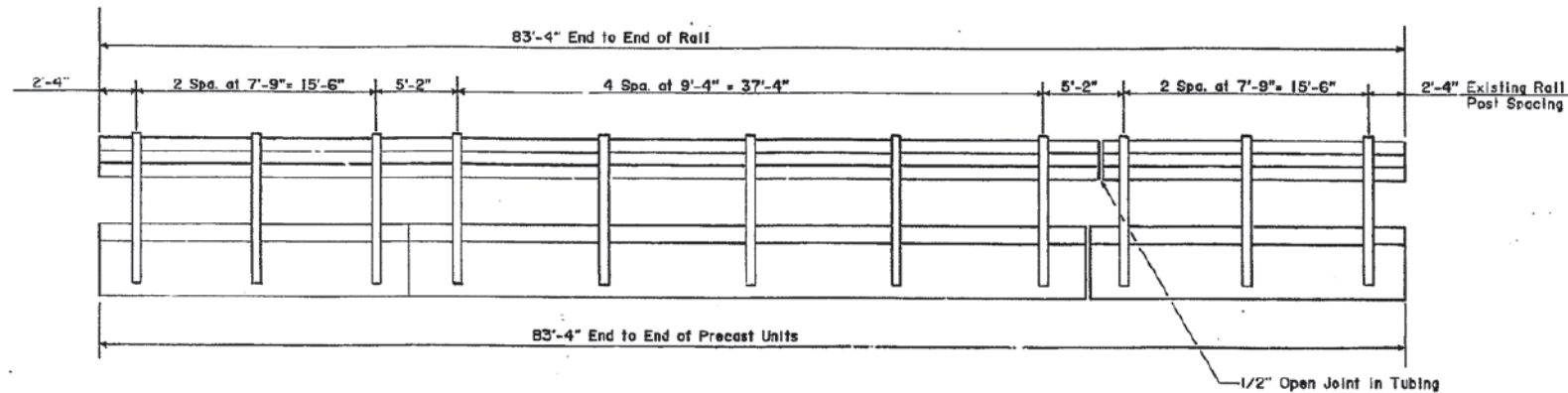


STATE OF ILLINOIS
DEPARTMENT OF TRANSPORTATION

PROJECT NO.	SECTION	DATE	SHEET NO.	SHEET NO.
FAS200	WHITESIDE	273	93	
SHEETS				

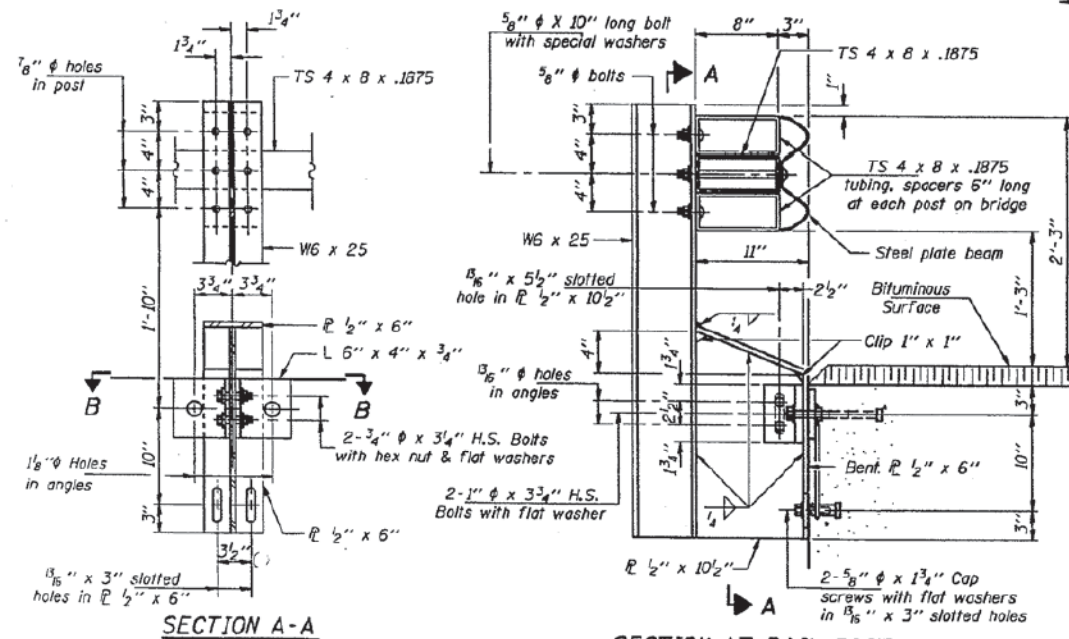
NOTES * (141 & 136) WRS-2 & 141BR-1

Hollow structural steel tubing shall conform to the requirements of ASTM designation A-500 Grade B Structural Steel Tubing and shall meet the longitudinal CVN requirements of 15 ft-lbs at 0° F.
All other steel shapes and plates shall conform to the requirements of AASHTO M-270 Grade 36 except posts and angles shall conform to AASHTO M-270, Grade 50.
Bolts, cap screws and nuts shall conform to the requirements of ASTM designation A-307 except for high strength bolts, nuts and washers noted which shall conform to AASHTO M-164.
All bolts, nuts, cap screws, washers and lock washers shall be galvanized in accordance with AASHTO M-232.
All posts, railing, rail splices, anchor devices and angles shall be galvanized after shop fabrication in accordance with AASHTO M-111 and ASTM A-385. Galvanized rail shall not be painted.
Railing shall be in accordance with Section 50B of the Standard Specifications, except as noted, and will be paid for at the contract unit price per lineal foot for STEEL RAILING, TYPE WT.
All field drilled holes shall be coated with an approved zinc rich paint before erection.
The 1/2" x 6" plates that come in contact with concrete shall receive two coats of asphalt paint conforming to Section 714.08 Type B or place 1/2" fabric bearing pads between the plates and concrete.
The 3/4" high strength bolts used to connect the 6" x 4" x 3/4" angles to the post shall be tightened in accordance with Article 507.04(g)(3) of the Standard Specifications. The 1" high strength bolts connecting the angles to the concrete shall be tightened to a snug fit and given an additional 1/8 turn. The 5/8" cap screws in bottom of posts shall be tightened to a snug fit only.
For multi-span bridges, sufficient 1/2" x 6" x 1'-2" galvanized steel shims shall be provided to align rail between adjacent spans. Cost incidental to Steel Railing.

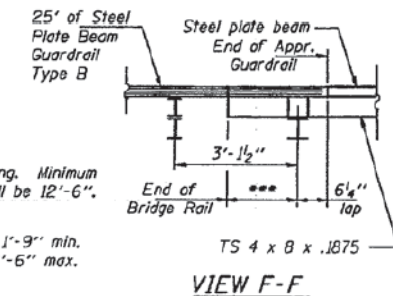
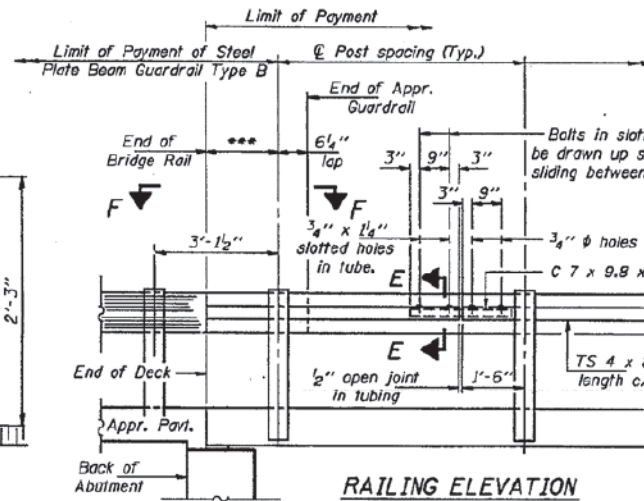
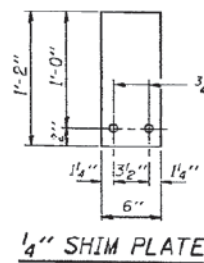


STEEL RAILING TYPE WT

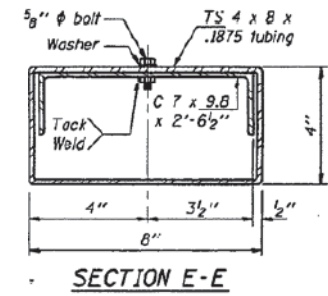
West Rail (facing east)
East Rail (similar)



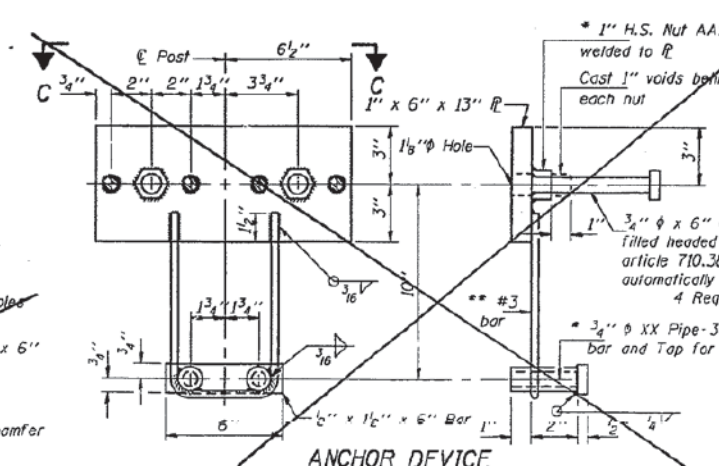
SECTION AT RAIL POST



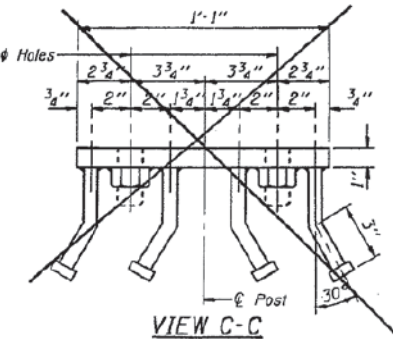
VIEW F-F



SECTION E-E



ANCHOR DEVICE



VIEW C-C

BILL OF MATERIAL

Item	Unit	Quantity
Steel Railing, Type WT	Lin. Ft.	167

TYPE WT
STEEL RAILING

SEE SH. OF FOR RAIL POST DETAILS

DESIGNED	19
CHECKED	
DRAWN	
CHECKED	

R-30 2-26-93 6'-3" Max. Post Spacing

* Threaded areas shall be plugged or blocked off during casting of beam.
** Whenever the lower insert assemblies interfere with strand locations, the #3 bars shall be cut and adjusted in order to allow raising or lowering of the lower inserts. Maximum adjustment not to exceed 1/2".