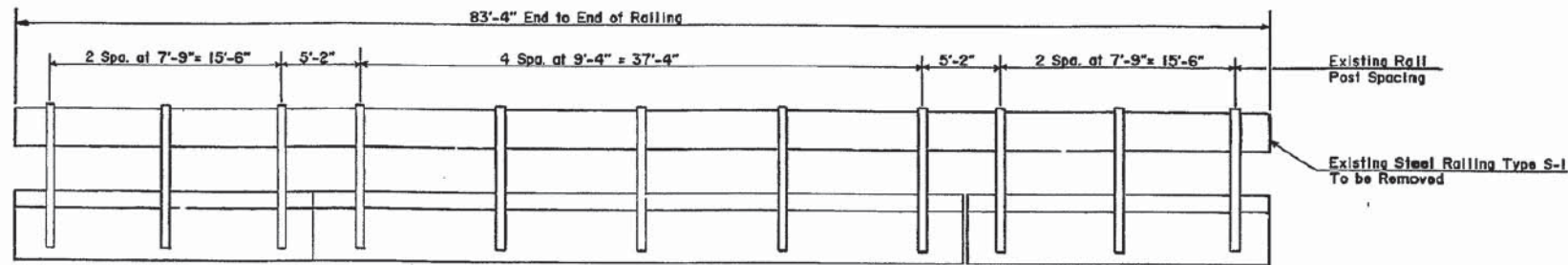


ROUTE NO.	DIST.	COUNTY	TOTAL SHEETS	SHEET NO.
FAS20D	*	WHITESIDE	273	92
FED. ROAD DIST. NO. 7 ILLINOIS PROJECT				

* (141 & 136) WRS-2 & 141BR-1



ELEV. EXIST. RAILING

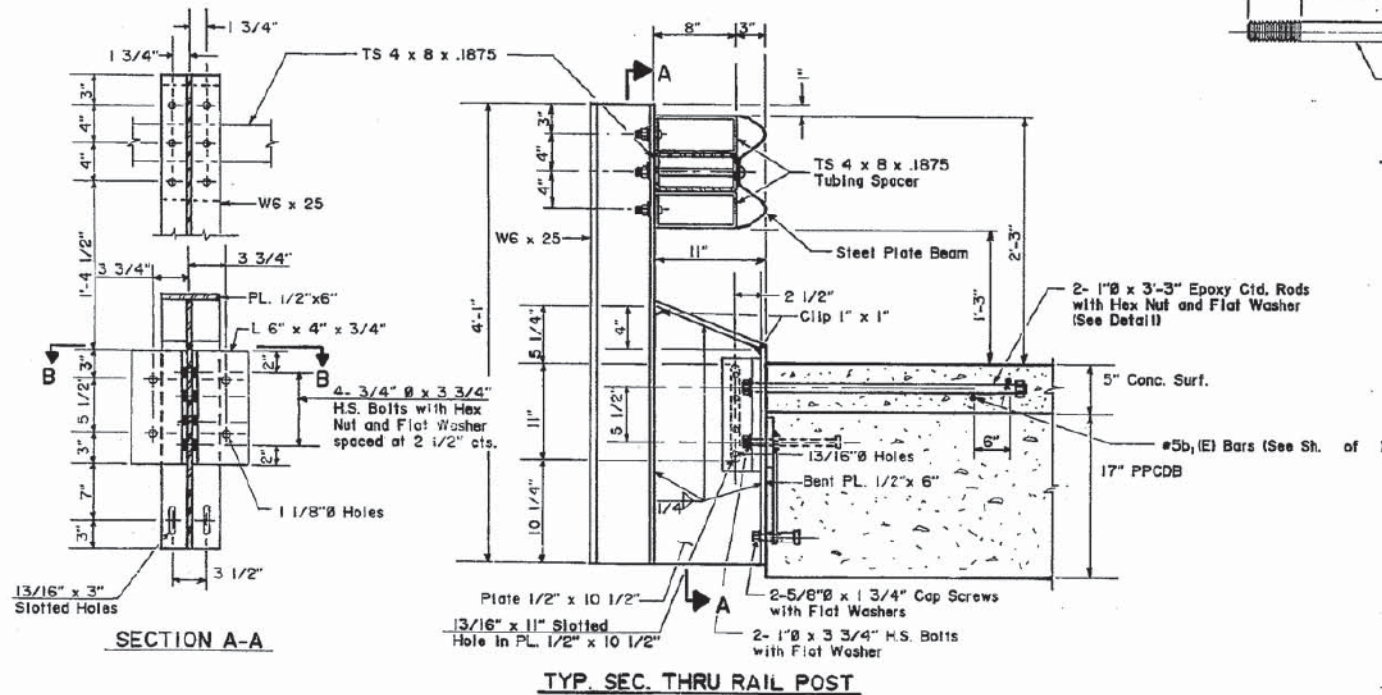
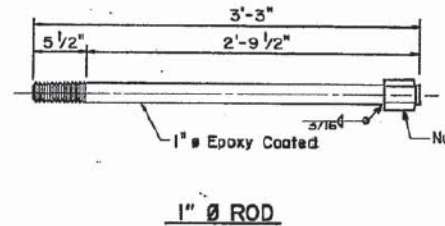
West Rail (facing east)
East Rail (similar)

NOTES:

The contractor shall use standard R-30 Steel Railing Type WT in conjunction with this sheet. Type WT details on the rail post have been altered to fit existing field conditions.

The contractor shall provide sufficient shims, H.S. bolts, nuts, and flat washers to realign existing railing. The length of bolts and cap screws shall be determined in the field when shims are used.

All cost shall be included in contract unit price per lin. ft. as STEEL RAILING TYPE WT.



ITEM	UNIT	QUANTITY
BRIDGE RAIL REMOVAL	LIN FT	167

DISTRICT NO. 2 DIXON
DESIGNED D. Pousser
DRAWN DATE 4/93
CHECKED M. Etomadi SCALE None

Revised 6/4/93

SN 098-0044

FILE NAME =	USER NAME = \$USER\$	DESIGNED - RAC	REVISED -
\$FILEL\$		DRAWN - LCR	REVISED -
	PLOT SCALE = \$SCALE\$	CHECKED - DAZ	REVISED -
	PLOT DATE = \$DATE\$	DATE - 06-21-13	REVISED -

STATE OF ILLINOIS
DEPARTMENT OF TRANSPORTATION

ZROKA
engineering

Zroka Engineering, P.C.
4216 North Hermitage
Chicago, IL 60613

EXISTING BRIDGE PLANS - 1994
FOR INFORMATION ONLY

SCALE: SHEET OF SHEETS STA. 283+43 TO STA. 293+50

F.A.S. RTE.	SECTION	COUNTY	TOTAL SHEETS	SHEET NO.
200	141B-2	WHITESIDE	77	62
CONTRACT NO. 64D81				

ILLINOIS FED. AID PROJECT