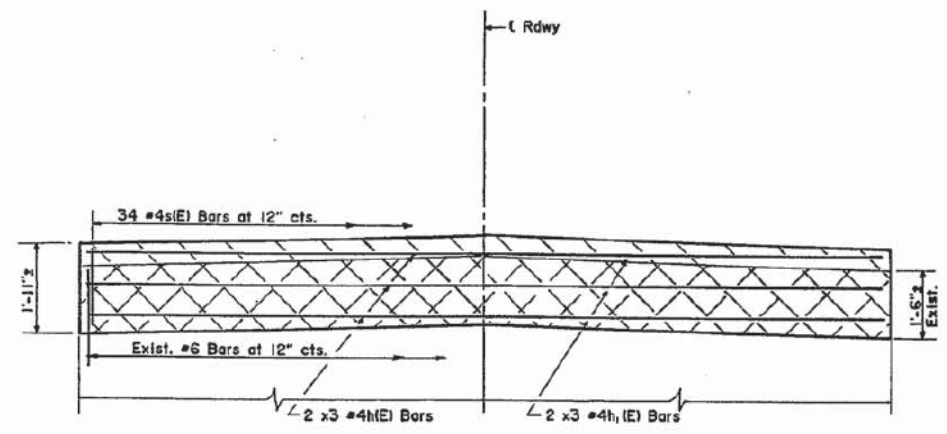
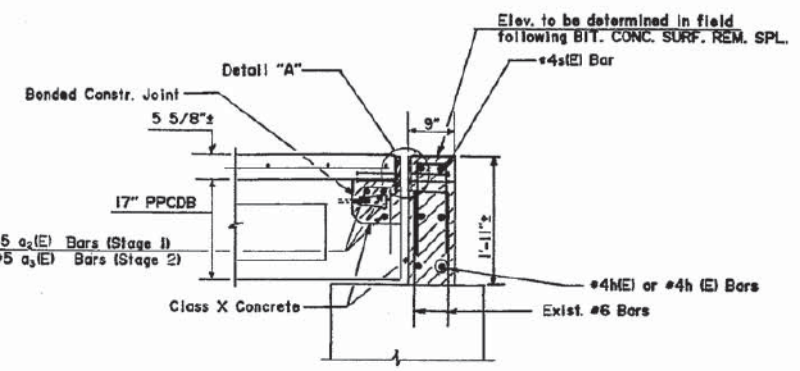


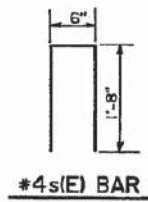
ROUTE NO.	SEC.	COUNTY	TOTAL SHEETS	SHEET NO.
FAS20D *		WHITESIDE	273	91
FED. ROAD DIST. NO. 7 ILLINOIS PROJECT				
* (141&136) W&RS-2 & 141BR-1				



ELEVATION SOUTH ABUTMENT
(Facing South)



SECTION A-A

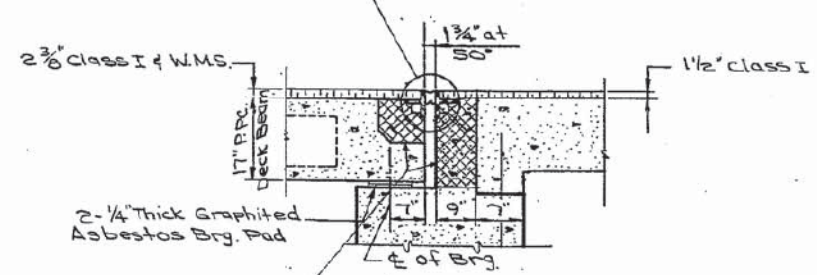


#4s(E) BAR

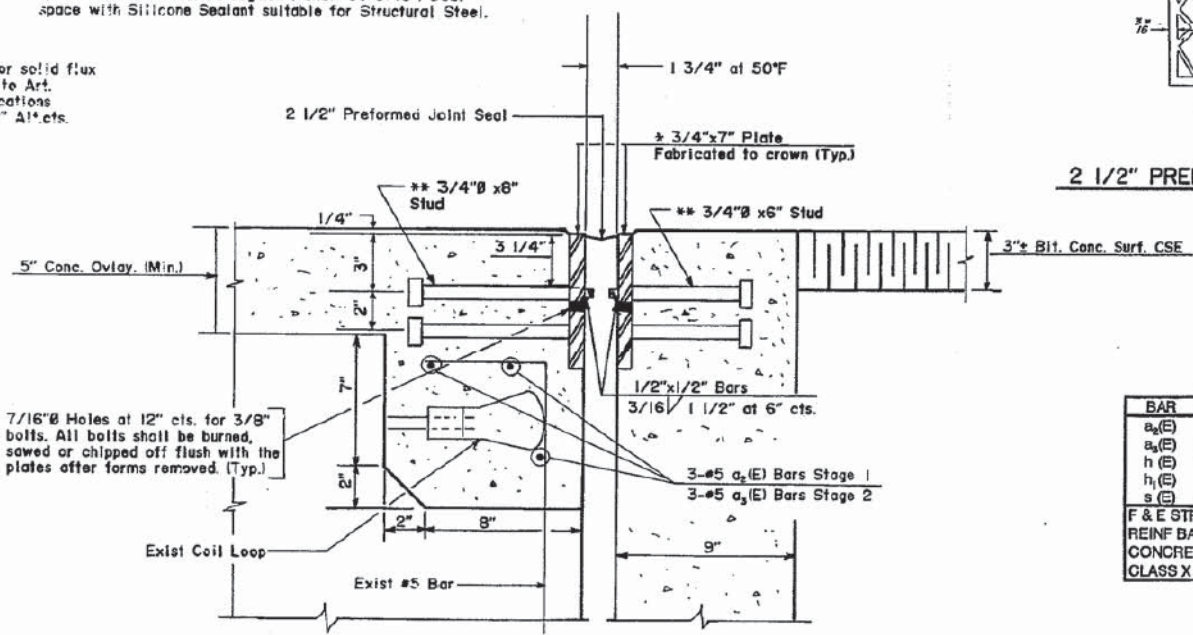
* Furnish in segments of 20 ft. maximum length. Maximum space between installed segments shall be 3/16". Seal space with Silicone Sealant suitable for Structural Steel.

** 3/4"Ø x 6" or 8" Granular or solid flux filled headed studs conforming to Art. 710.38 of the Standard Specifications automatically end welded at 12" Δ's etc.

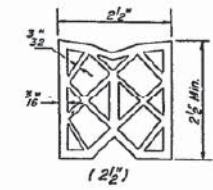
Existing Steel Bars to be removed. Cost to be included in the Contract Unit Price per CU YD. for CONCRETE REMOVAL. It shall be the Contractor's responsibility to replace any broken or damaged vertical rebars or coil loops. See BSP-11.



SEC. THRU EXIST. SO. ABUT.



DETAIL "A"



2 1/2" PREFORMED JOINT SEAL

BILL OF MATERIALS

BAR	NO.	SIZE	LENGTH	SHAPE
a ₂ (E)	3	#5	18'-5"	—
a ₃ (E)	3	#5	18'-3"	—
h	6	#4	17'-11"	—
h ₁ (E)	6	#4	16'-6"	—
s	33	#4	3'-10"	—
F & E STRUCT STEEL			POUND	1294
REINF BARS EPOXY CTD			POUND	331
CONCRETE REMOVAL			CU YD	2.2
CLASS X CONCRETE			CU YD	2.6

DISTRICT NO. 2 DIXON
DESIGNED D. PAUSER
DRAWN DATE 4/93
CHECKED M. Etemadi SCALE None

Revised 6/4/93

SN 098-0044

FILE NAME =	USER NAME = \$USER*	DESIGNED - RAC	REVISED -
\$FILE\$		DRAWN - LCR	REVISED -
	PLOT SCALE = \$SCALE*	CHECKED - DAZ	REVISED -
	PLOT DATE = \$DATE*	DATE - 06-21-13	REVISED -

STATE OF ILLINOIS
DEPARTMENT OF TRANSPORTATION

ZROKA
engineering
Zroka Engineering, P.C.
4216 North Hermitage
Chicago, IL 60613

EXISTING BRIDGE PLANS - 1994
FOR INFORMATION ONLY

F.A.S. RTE.	SECTION	COUNTY	TOTAL SHEETS	SHEET NO.
200	141B-2	WHITESIDE	77	61
CONTRACT NO. 64D81				
ILLINOIS FED. AID PROJECT				

SCALE: SHEET OF SHEETS STA. 283+43 TO STA. 293+50