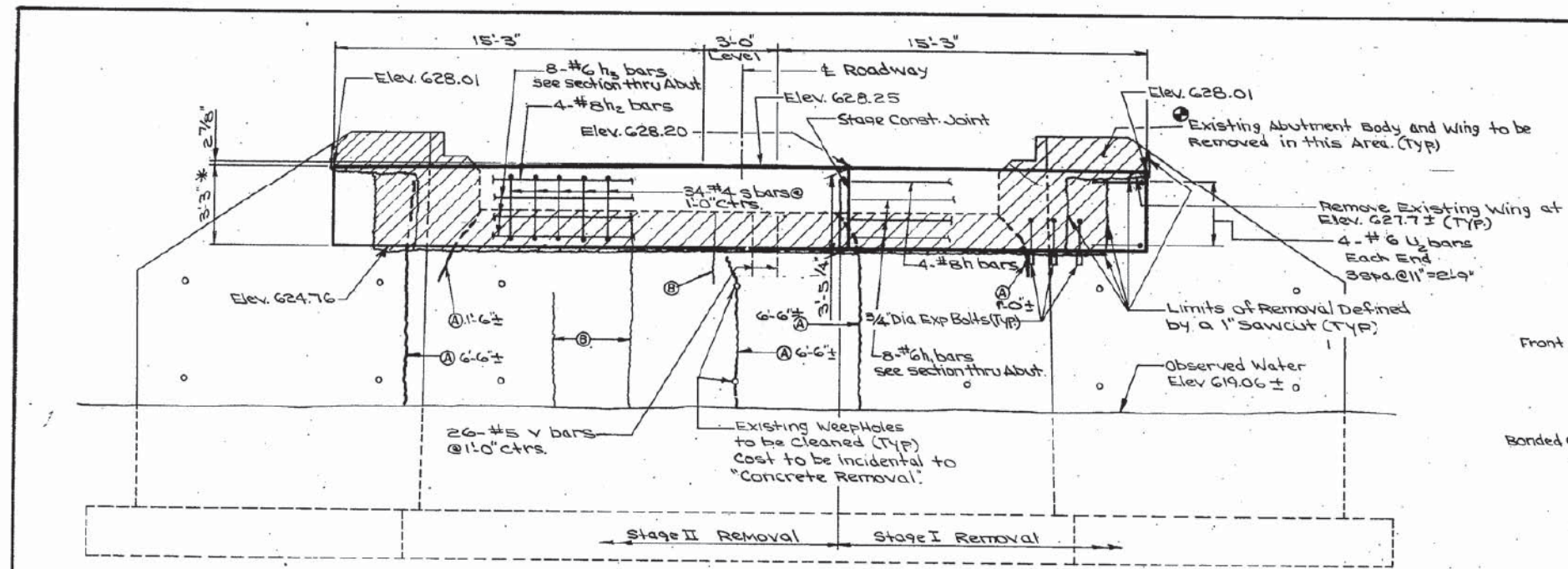
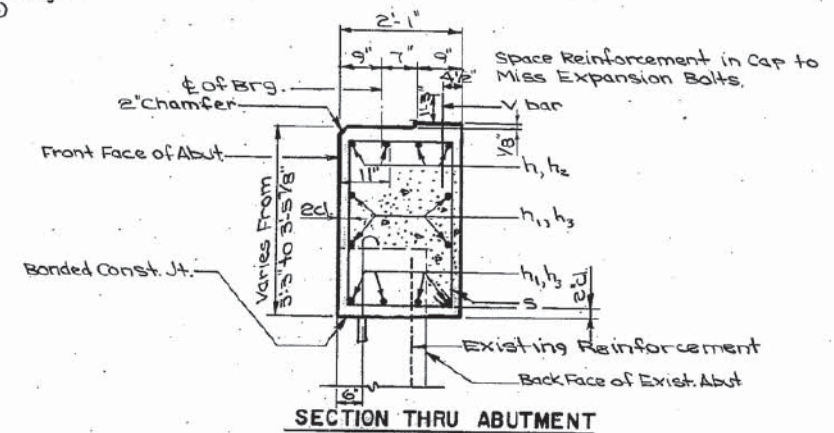


PROJECT NO.	SECTION	COUNTY	TOTAL SHEETS	SHEET NO.
F.A.S. 200	141B	WHITESIDE	16	12
SHEET NO. 8				
9 SHEETS				



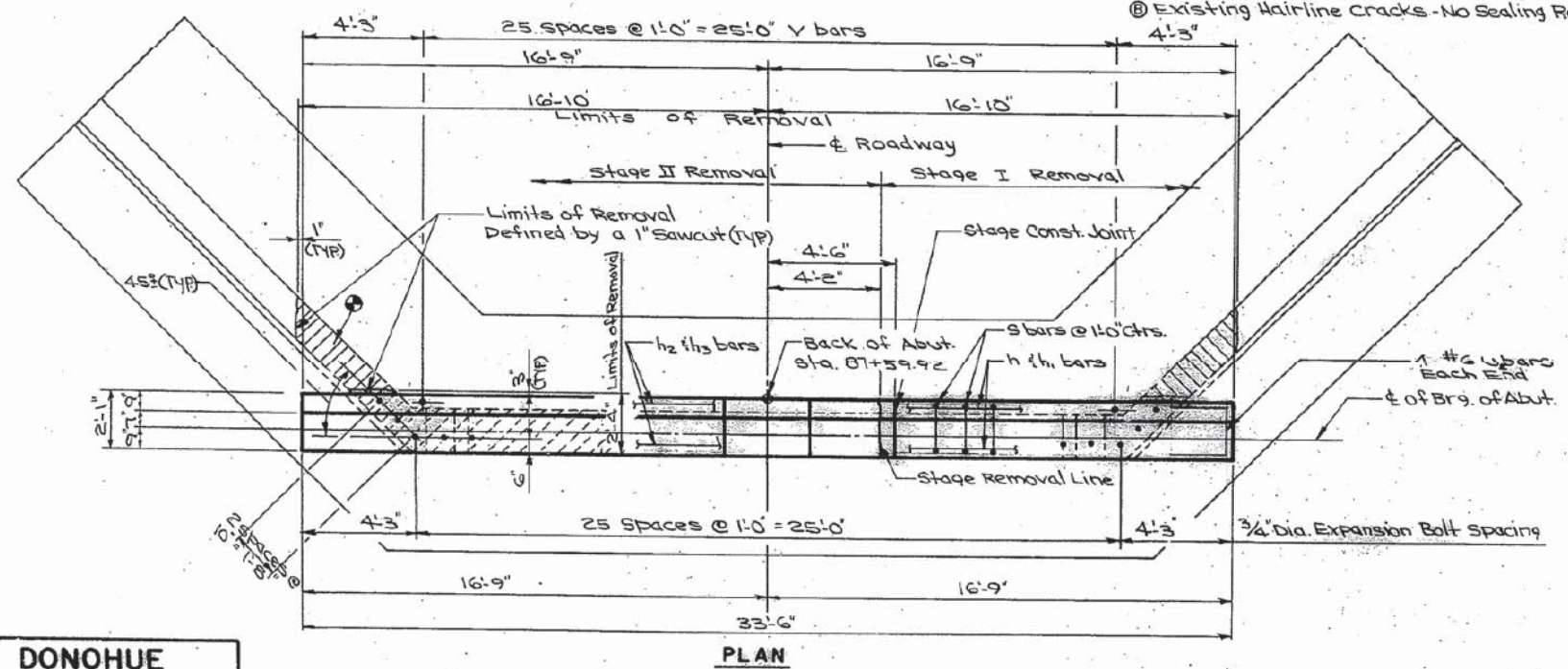
ELEVATION
(Looking North)



SECTION THRU ABUTMENT

- Ⓐ Existing Cracks - Clean Area Thoroughly and Seal with Epoxy Sealant.
- Ⓑ Existing Hairline Cracks - No Sealing Required

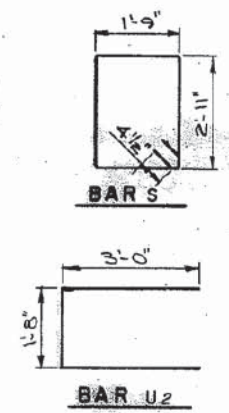
Notes:
Reinforcement extending into removed area shall be cleaned and incorporated into new construction.
Expansion bolts shall be anchored in sound concrete.
All edges shall have 3/4" chamfer except as noted.
For Reinforcement Splicer & Notes see sheet 2.



PLAN

NORTH ABUTMENT BILL OF MATERIALS

BAR	NUMBER	SIZE	LENGTH	SHAPE
h	4	#8	11'-11"	
h1	8	#8	11'-11"	
h2	4	#8	20'-11"	
h3	8	#8	20'-11"	
s	24	#4	10'-10"	
v	26	#5	2'-0"	
u2	2	#2	4'-8"	
Expansion Bolt	LF	22		
Expansion Bolt	ESL	30		
Concrete Removal	CY	5		
Class 2 Concrete	CY	8.7		
Reinforcement Bars	LBS.	1140		



DONOHUE
ENGINEERS & ARCHITECTS

DESIGN	DESIGN CHD.	DRAWN	CHECKED
BY: PDZ	BY: J.T.T.	BY: J.A.R.	BY: L.M.F.
PROJECT NUMBER 11310.201			

NORTH ABUTMENT

F.A.S. RTE. 200 (ILL 172)
OVER COUNTY DITCH NO. 1
F.A.S. RTE. 200 SECTION 141 BR
WHITESIDE COUNTY
STA. 87+ 82.00

REVISIONS	
NAME	DATE