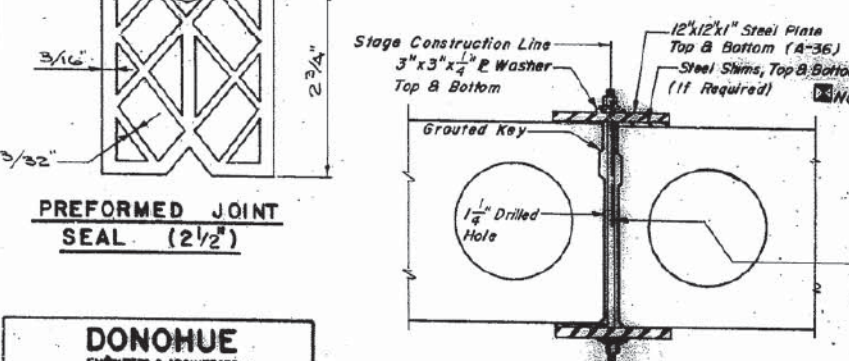
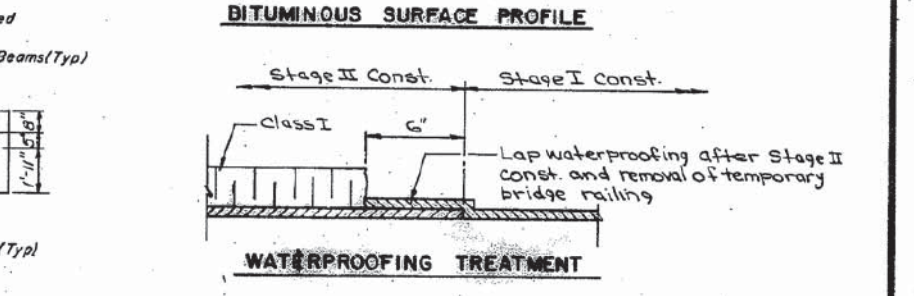
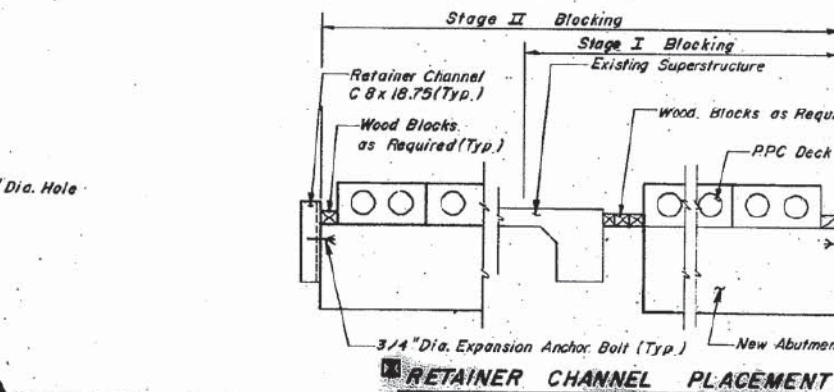
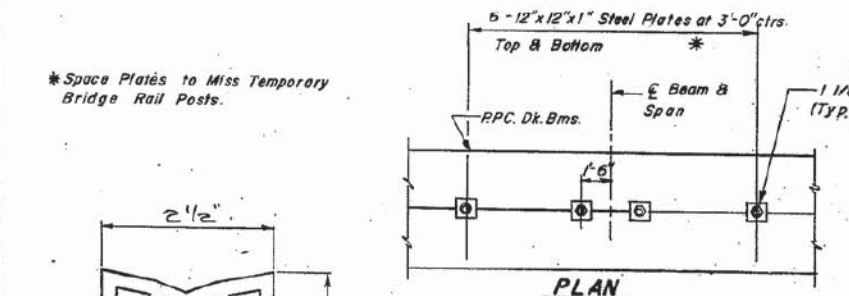
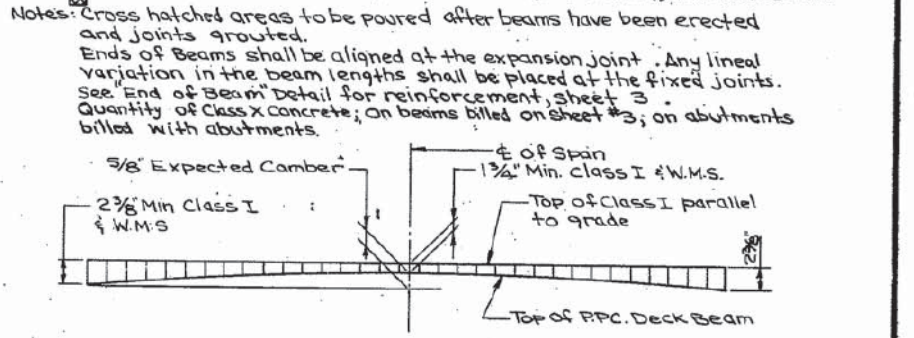
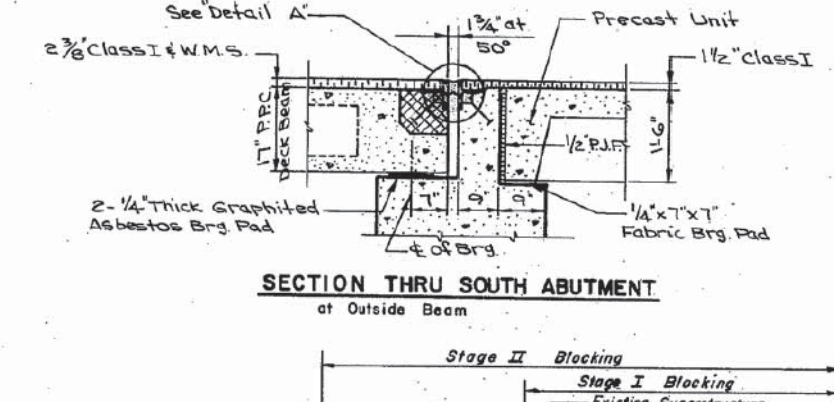
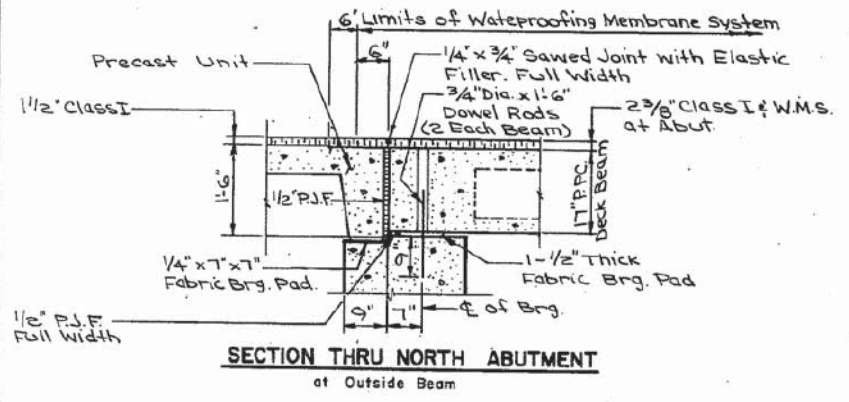
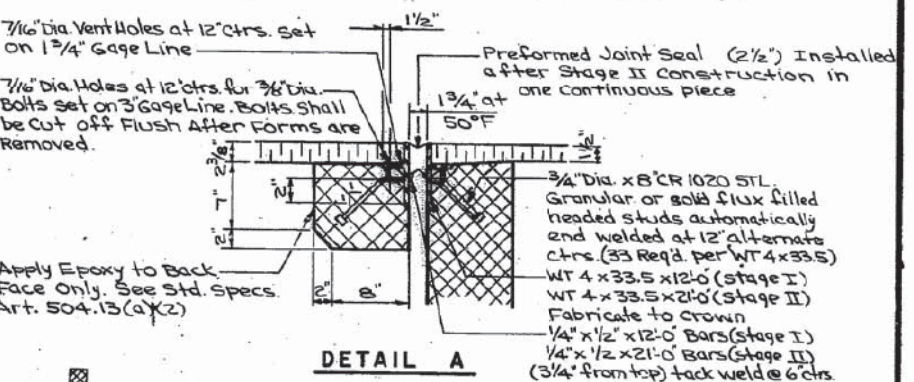
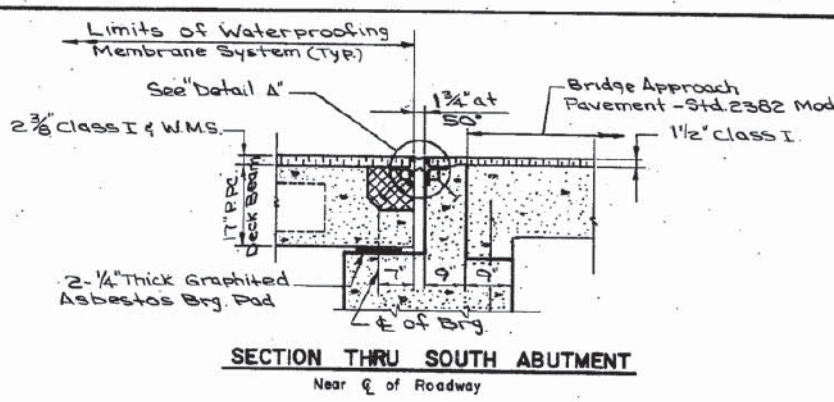
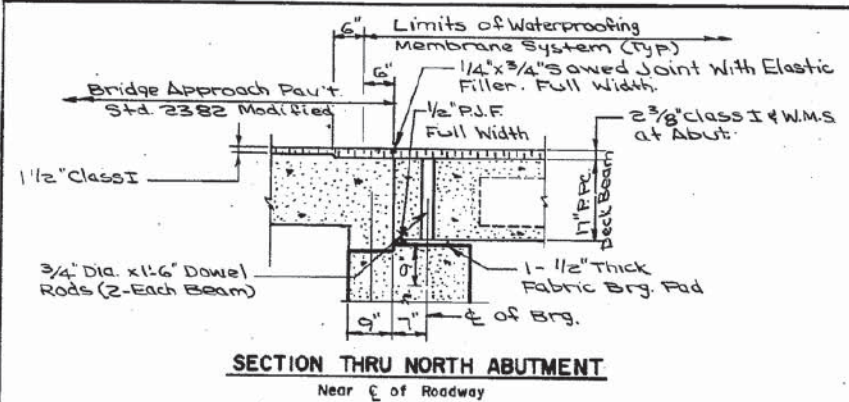


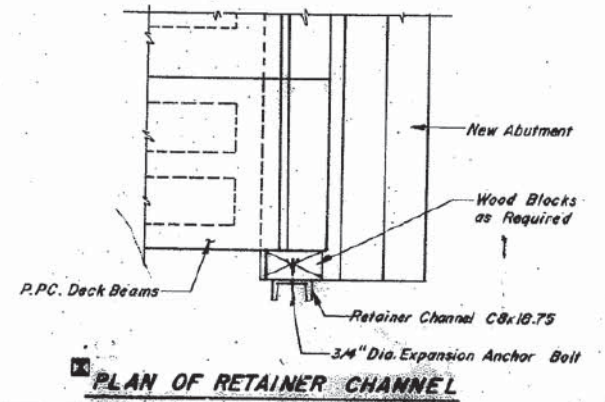
|           |         |           |              |           |
|-----------|---------|-----------|--------------|-----------|
| ROUTE NO. | SECTION | COUNT     | TOTAL SHEETS | SHEET NO. |
| 200       | 141B    | WHITESIDE | 16           | 8         |
|           |         |           |              | 9 SHEETS  |



Note: See special provisions for Stage Construction Precast Prestressed Concrete Deck Beams. See stage construction detail for traffic lane. Cost is incidental to PPC Deck Beams.

Note: During Stage I construction, block beams between retainer channel and existing structure. During Stage II construction install additional retainer channel for blocking. After blockouts are poured and cured, the retainer channels shall be removed. Expansion anchor bolts shall be removed and drilled holes grouted. Retainer channels to be incidental to PPC Deck Beams.

1" Dia. Stud Bolt Threaded 6" Each End with Washers and Nuts. Coat with a Water Soluble Lubricant. (Min. Fy = 50K.S.I.)



**BILL OF MATERIALS**

| Bar                  | No. | Size | Length | Shape |
|----------------------|-----|------|--------|-------|
| Structural Steel     |     |      | Lbs.   | 2310  |
| Preformed Joint Seal |     |      | L.F.   | 33    |

**SUPERSTRUCTURE DETAILS**

F.A.S. RTE. 200 (ILL 172)  
OVER COUNTY DITCH NO. 1  
F.A.S. RTE. 200 SECTION 141 BR  
WHITESIDE COUNTY  
STA. 87+ 82.00

**DONOHUE**  
ENGINEERS & ARCHITECTS

|                          |               |          |            |
|--------------------------|---------------|----------|------------|
| DESIGN                   | DESIGN CHG'D. | DRAWN    | CHECKED    |
| BY: PDZ.                 | BY: J.T.T.    | BY: JAR. | BY: L.M.F. |
| PROJECT NUMBER 11310.201 |               |          |            |

**REVISIONS**

| NAME | DATE |
|------|------|
|      |      |
|      |      |