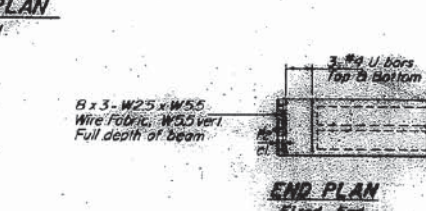
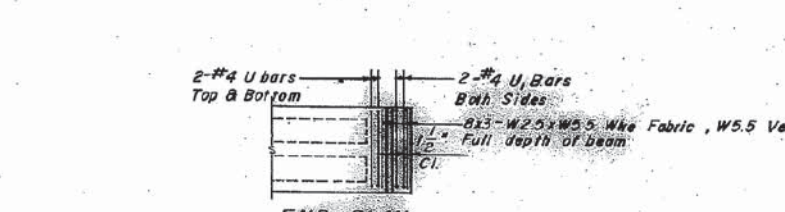
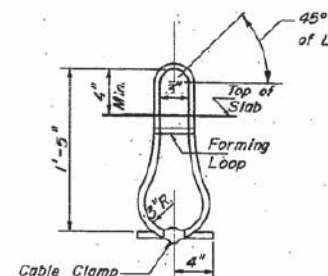
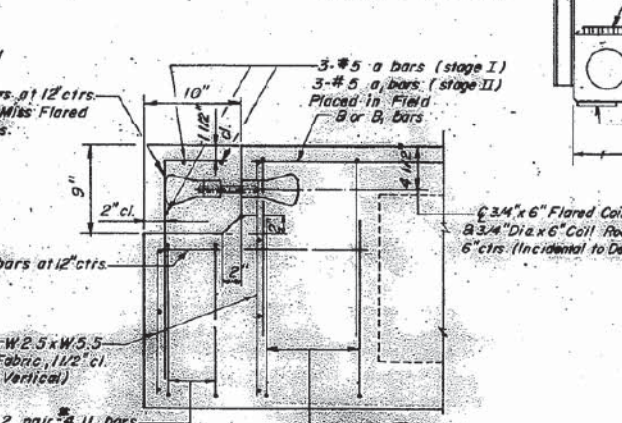
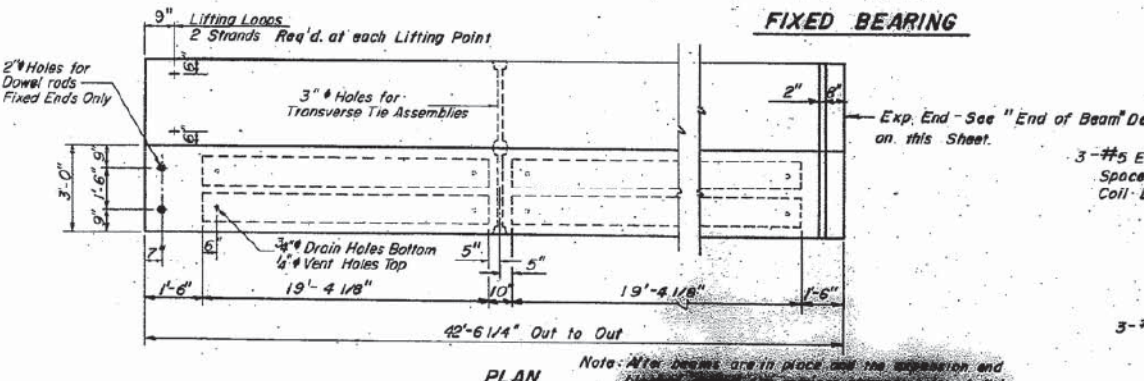
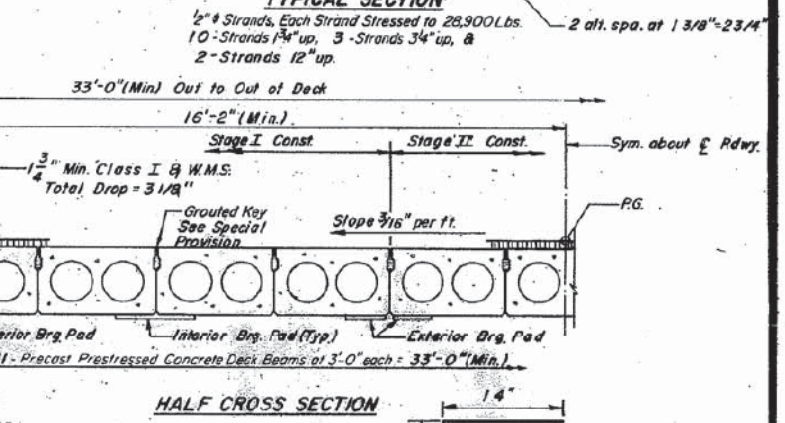
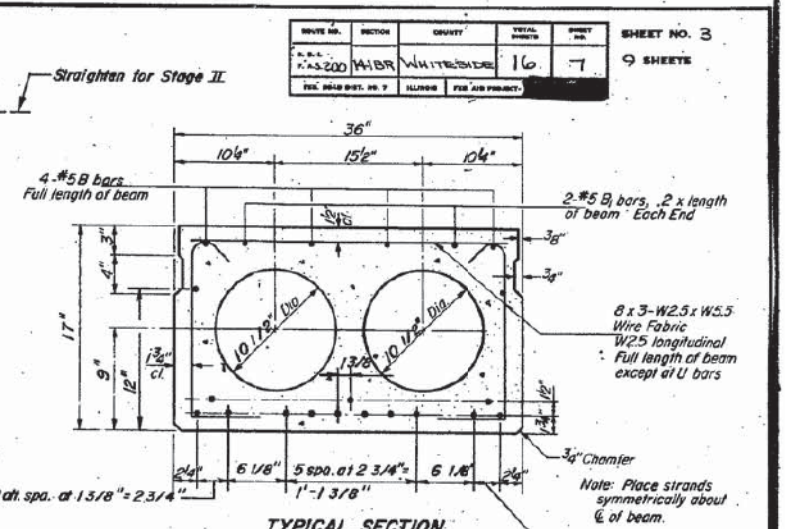
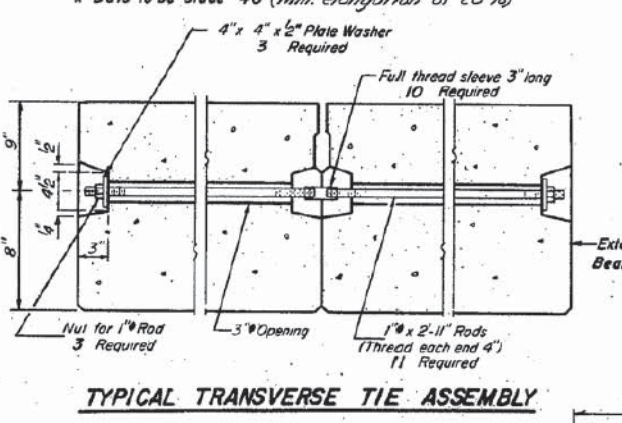
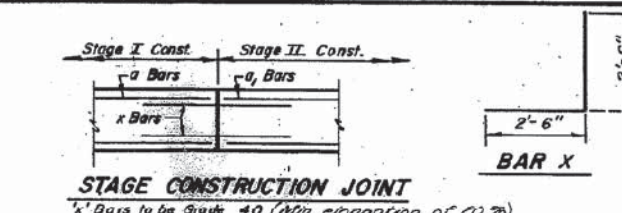
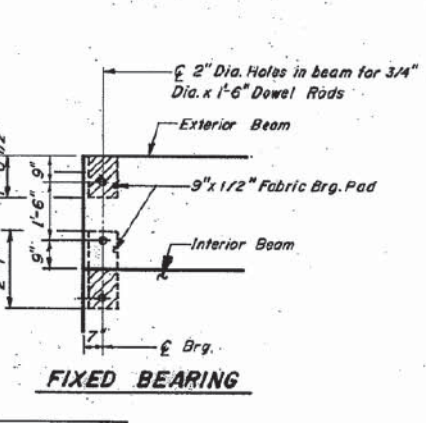
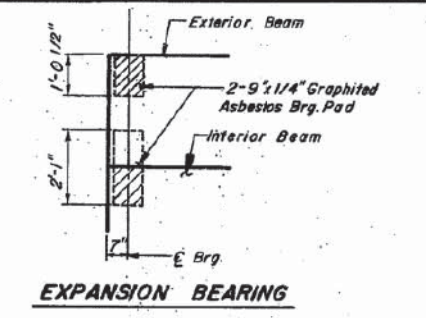
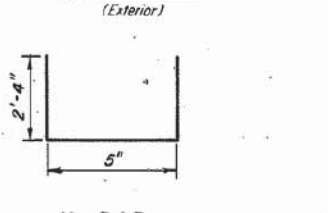
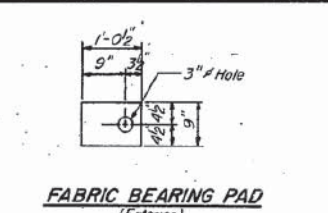
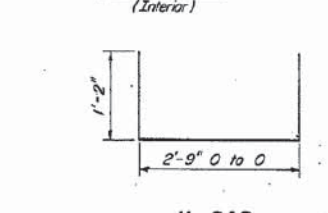
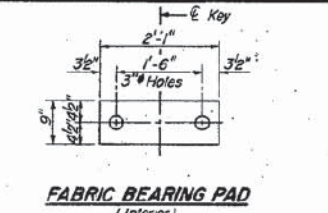


DATE	SECTION	COUNTY	SHEET	NO.	SHEET NO.
11-20-82	141B-2	WHITESIDE	16	7	3
SHEET NO. 3					9 SHEETS



**BILL OF MATERIAL**

Bar	No.	Size	Length	Shape	
a	3	#5	11'-8"		
a1	3	#5	20'-8"		
x	3	#5	5'-0"		
Precast Prestressed Concrete Deck Beams				Sq Ft	1404
Reinforcement Bars				Lbs.	120
Class X Concrete				C.Y.	07

**SUPERSTRUCTURE**

F.A.S. RTE 200 (ILL 172)  
OVER COUNTY DITCH NO. 1  
F.A.S. RTE 200 SECTION 141B  
WHITESIDE COUNTY  
STA. 87+ 82.00

**DONOHUE**  
ENGINEERS & ARCHITECTS

DESIGN	DESIGN CHK'D	DRAWN	CHECKED
BY: PDZ	BY: J.T.C.	BY: J.A.R.	BY: L.N.F.
PROJECT NUMBER 11510-201			

Note: Loops shall be burned off after beams have been erected.

**NOTES**

PRESTRESSING STEEL SHALL BE NON-GALVANIZED HIGH STRENGTH, STRESS-RELIEVED 7-WIRE STRAND, GRADE 270.  
THE NOMINAL DIAMETER SHALL BE 1/2" AND THE NOMINAL CROSS-SECTIONAL AREA SHALL BE 0.153 SQ. IN.  
LIFTING LOOPS SHALL BE 3/8" DIAMETER, 6 x 25 CLASS WIRE ROPE WITH FIBER CORE AND SHALL HAVE A MINIMUM ULTIMATE TENSILE STRENGTH OF 33,000 LBS. OR 2-1/2" DIA., 270 K.S.I., STRANDS.  
THE 1" DIA. RODS IN THE TRANSVERSE TIE ASSEMBLY SHALL BE TIGHTENED TO A SNUG FIT AND THE THREADS SET. POCKETS THAT RECEIVE TRANSVERSE TIE BAR ON OUTSIDE SHALL BE FILLED WITH GROUT AFTER TRANSVERSE TIE ASSEMBLY IS IN PLACE.  
REINFORCEMENT BARS SHALL CONFORM TO ASTM A-36 OR A-53, GRADE 60.  
THE BEARING SURFACES SHALL BE ADJUSTED BY SHIMMING TO ASSURE FIRM AND EVEN BEARING. TWO 1/8" FABRIC ADJUSTING SHIMS OF THE DIMENSIONS OF THE EXTERIOR BEARING PAD SHALL BE PROVIDED FOR EACH BEARING.  
COST OF REINFORCEMENT AND ACCESSORIES CAST INTO THE BEAM, OF BEARING PADS, RETAINER CHANNELS, SHEAR KEY CLAMPING AT STAGE CONSTRUCTION JOINT AND OF SHOOTING LONGITUDINAL SHEAR KEYS IS INCLUDED IN UNIT PRICE BID FOR PRECAST PRESTRESSED CONCRETE DECK BEAMS.  
KEYWAY SURFACES SHALL BE CLEANED TO REMOVE POOR OIL OR OTHER BOND BREAKING MATERIAL PRIOR TO SHIPPING OF THE BEAMS. CLEANING SHALL BE DONE BY SANDBLASTING THE KEYWAY AREA BETWEEN TOP OF THE BEAM AND THE BOTTOM EDGE OF KEY.

**REVISIONS**

NO.	DATE	DESCRIPTION