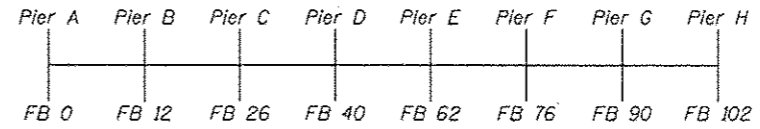
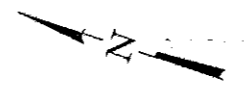


TABLE A

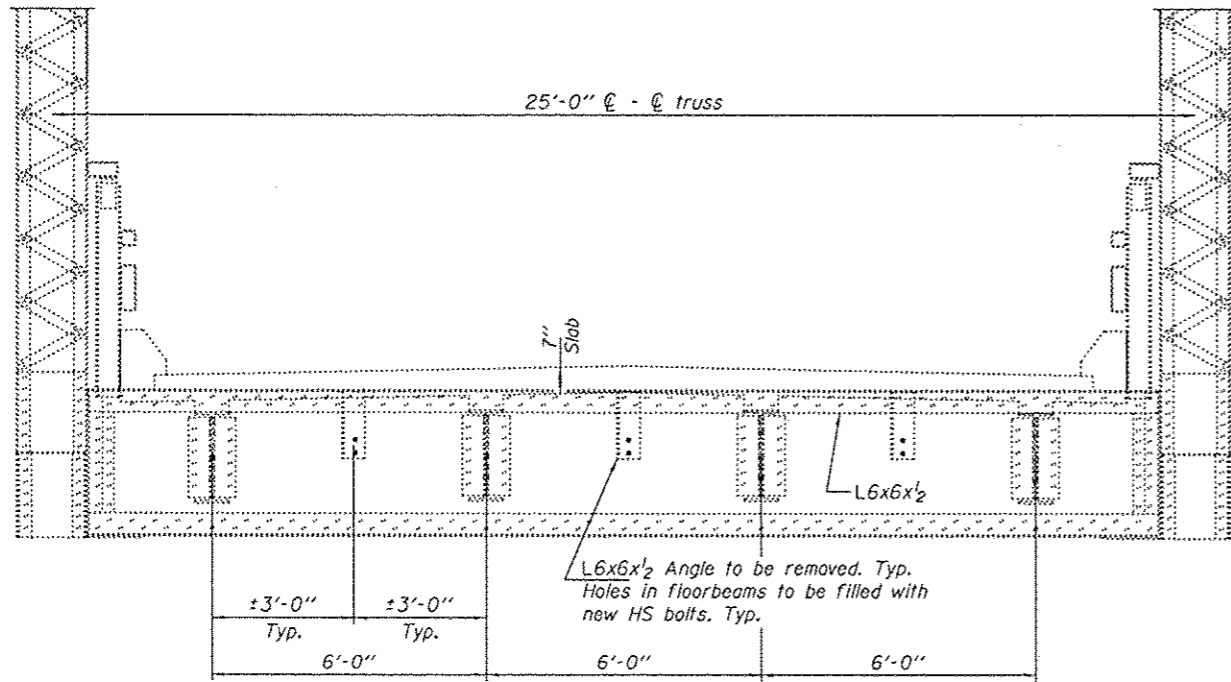
Floorbeam
2
3
5
7
8
12
14
16
17
18
20
21
28
37
38
39
40
41
42
43
48
49
50
51
54
59
61
62
63
69
70
71
72
73
81
82
84
89
90
99
100



PIER & FLOORBEAM LAYOUT SKETCH

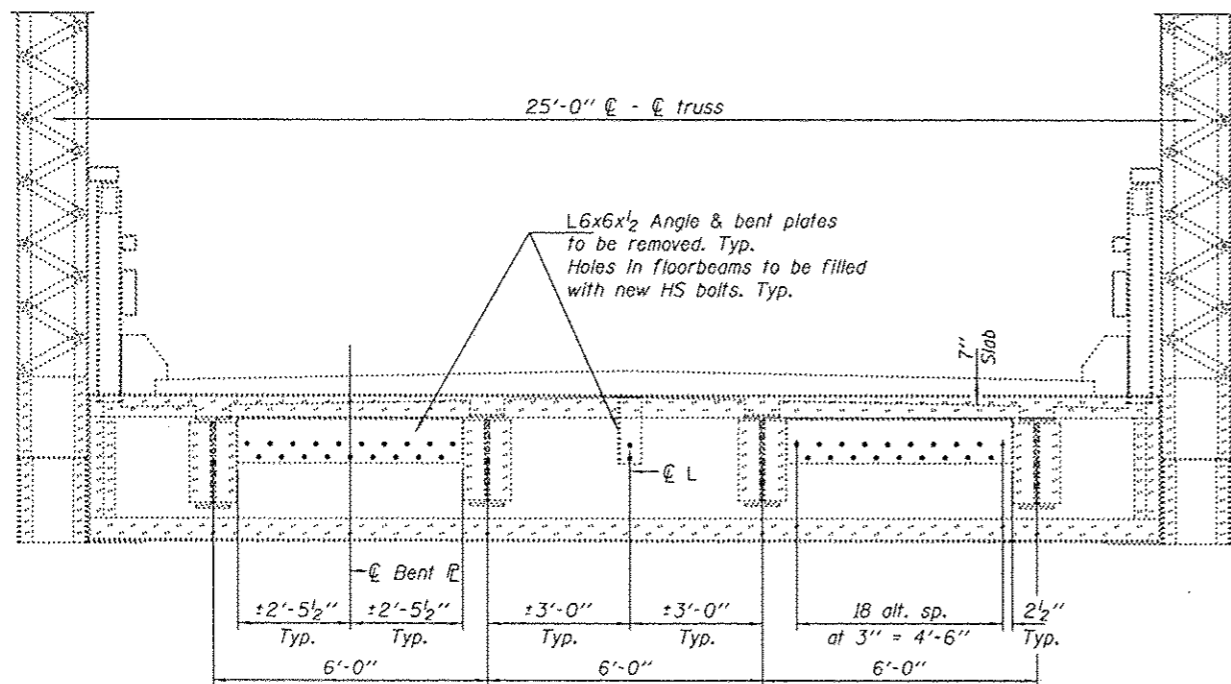
TABLE B

Floorbeam
53
64
67
68
74
75
78



TYPICAL CROSS SECTION AT REPAIR

(See Table A for locations)



TYPICAL CROSS SECTION AT REPAIR

(See Table B for locations)

DESIGNED *TLC*
 CHECKED *ATH*
 DRAWN *Dalva*
 CHECKED *TLC ATH*

EXAMINED *Timothy A. Anzani*
 PASSED *Carl Pross*
 ACTING ENGINEER OF STRUCTURAL SERVICES
 ACTING ENGINEER OF BRIDGES AND STRUCTURES

DATE *AUGUST 1, 2014*
 REVISED
 REVISED

STATE OF ILLINOIS
 DEPARTMENT OF TRANSPORTATION

REMOVAL DETAILS
 SN 002-0005

SHEET NO. 13 OF 13 SHEETS

F.A.S. RTE.	SECTION	COUNTY	TOTAL SHEETS	SHEET NO.
944	1380-BR1-7	ALEXANDER	17	17

CONTRACT NO. 78400
 ILLINOIS FED. AID PROJECT