

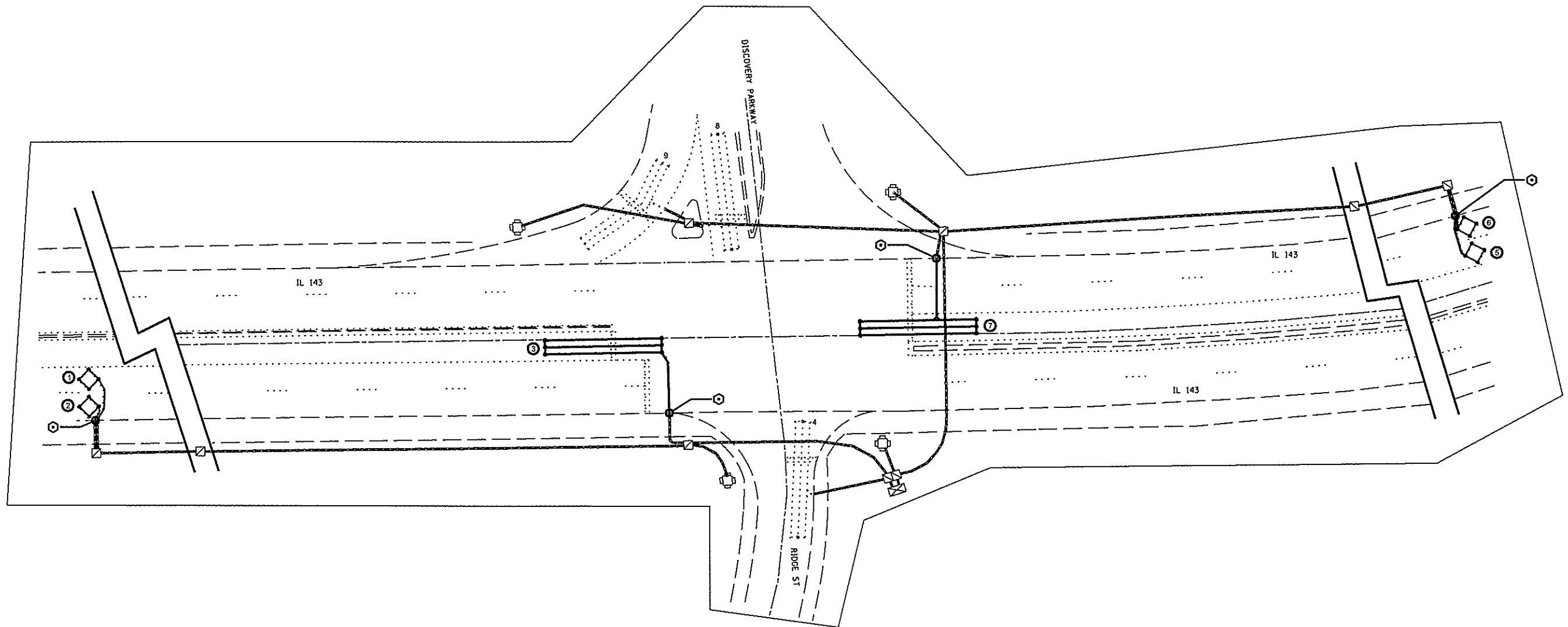
DETECTOR LOOP REQUIREMENTS AND CALCULATIONS  
FOR IL 143 & DISCOVERY PARKWAY

LOOP#	PHASE#	LOOP SIZE (FT. X FT.)	REQUIRED # OF TURNS	CALCULATED INDUCTANCE MICROHENRIES	CALCULATED RESISTANCE OHMS
1. SB CCO A	2	6 X 6	7	538.3	4.3
2. SB CCO B	2	6 X 6	7	535.4	4.3
3. SB LT CD	5	6 X 50-0	3-6-3	849.6	3.0
4. EB THRU CD	3	6 X 50-0	3-6-3	798.5	1.9
5. NB CCO A	6	6 X 6	7	509.7	3.7
6. NB CCO B	6	6 X 6	7	506.8	3.6
7. NB LT CD	1	6 X 50-0	3-6-3	826.0	1.6
8. EB THRU CD	4	6 X 50-0	3-6-3	821.0	2.4
9. EB RT CD	4	6 X 50-0	3-6-3	821.8	2.4

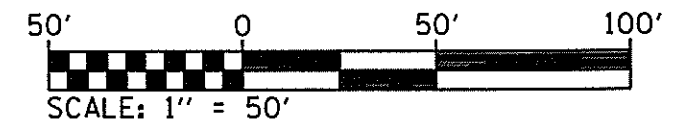
THE ABOVE VALUES ARE CALCULATED OF COMBINED LOOP AND LEAD-IN INDUCTANCE AND RESISTANCE. ACTUAL MEASURED VALUES SHOULD BE WITHIN +/- 20% OF THESE VALUES.

□=QUADRAPOLE

⊙=SEE DETAIL A



IL 143 & DISCOVERY PARKWAY



\*\*FAP 789/FAP 2

FILE NAME *	USER NAME * #USER*	DESIGNED -	REVISED -	STATE OF ILLINOIS DEPARTMENT OF TRANSPORTATION	DETECTOR LOOP REPLACEMENT PLAN 1 OF 3		F.A.P. RTE.	SECTION	COUNTY	TOTAL SHEETS	SHEET NO.
*FILE#		DRAWN -	REVISED -		SCALE: _____	SHEET NO. 2 OF 4 SHEETS	STA. _____ TO STA. _____	202RS-4, 406-IRS-1	MADISON	22	29
		CHECKED -	REVISED -				CONTRACT NO. 76MC4		ILLINOIS FED. AID PROJECT		
		PLLOT DATE * #DATE*	DATE -								