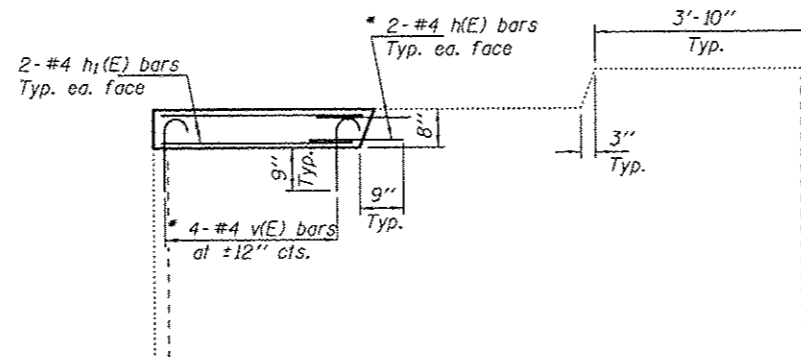
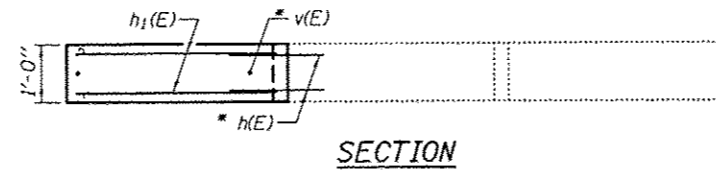


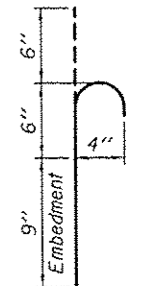
NOTES

Reinforcement bars designated (E) shall be epoxy coated.
 Plan dimensions and details relative to existing plans are subject to nominal construction variations. The Contractor shall field verify existing dimensions and details affecting new construction and make necessary approved adjustments prior to construction or ordering of materials. Such variations shall not be cause for additional compensation for a change in scope of the work, however, the Contractor will be paid for the quantity actually furnished at the unit price bid for the work.
 Existing reinforcement bars extending into the removal area shall be cleaned, straightened and incorporated into the new construction. Any reinforcement bars that are damaged during concrete removal shall be replaced with an approved bar splicer or anchorage system. Cost included with Concrete Removal.

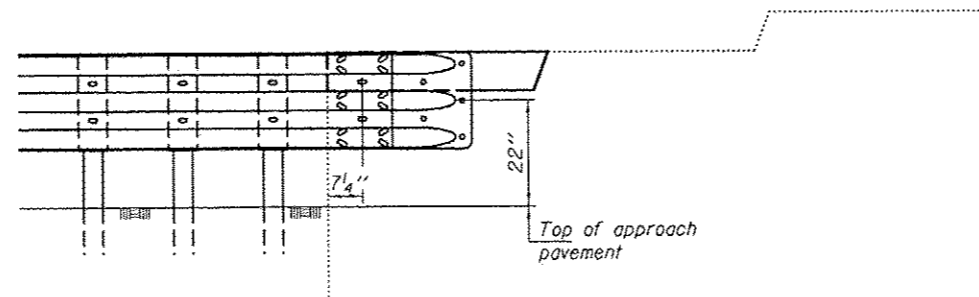


PROPOSED ELEVATION

* Epoxy grout h(E) & v(E) bars in 9" min. holes according to Article 584 of the Standard Specifications.



BAR v(E)



GUARDRAIL LOCATION



**BILL OF MATERIAL
4 WINGWALLS**

Bar	No.	Size	Length	Shape
h(E)	16	#4	1'-9"	—
h1(E)	16	#4	3'-3"	—
v(E)	16	#4	1'-3"	U
Concrete Structures			Cu. Yd.	0.40
Reinforcement Bars, Epoxy Coated			Pound	70

DESIGNED <i>Dominic Baliva</i>	EXAMINED <i>Timothy A. D...</i>	DATE AUGUST 1, 2014	STATE OF ILLINOIS DEPARTMENT OF TRANSPORTATION	WINGWALL MODIFICATION FAP 600 (IL 159) OVER CSX RAILROAD SN 082-0208	F.A.P. RTE. 600	SECTION 1130-1, 130-21RS-2	COUNTY ST. CLAIR	TOTAL SHEETS 36	SHEET NO. 26
CHECKED <i>D.A.B.</i>	PASSED <i>V.F.U.</i>	REVISIONS			SHEET NO. 1 OF 1 SHEETS		CONTRACT NO. 76055 ILLINOIS FED. AID PROJECT		