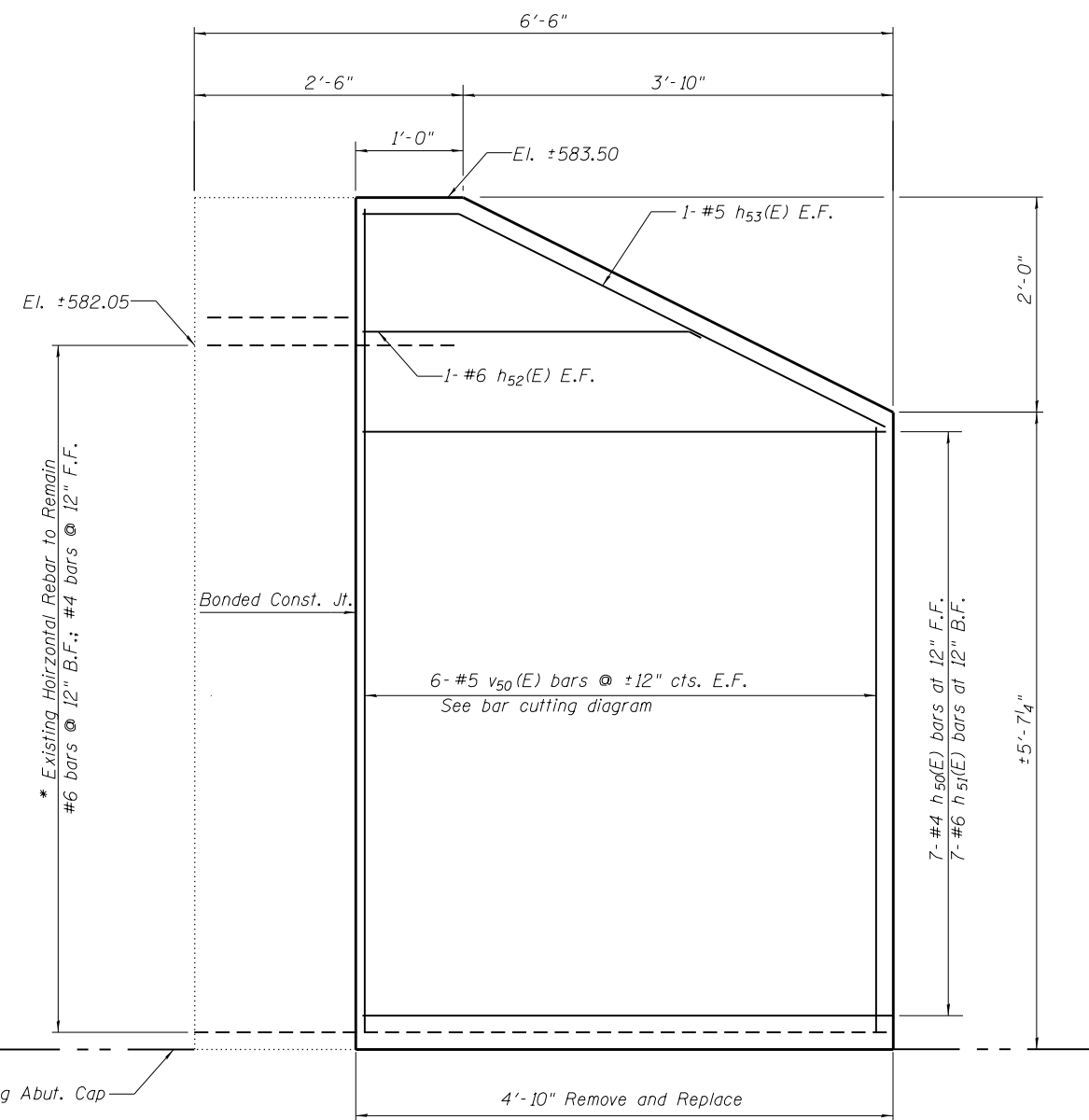


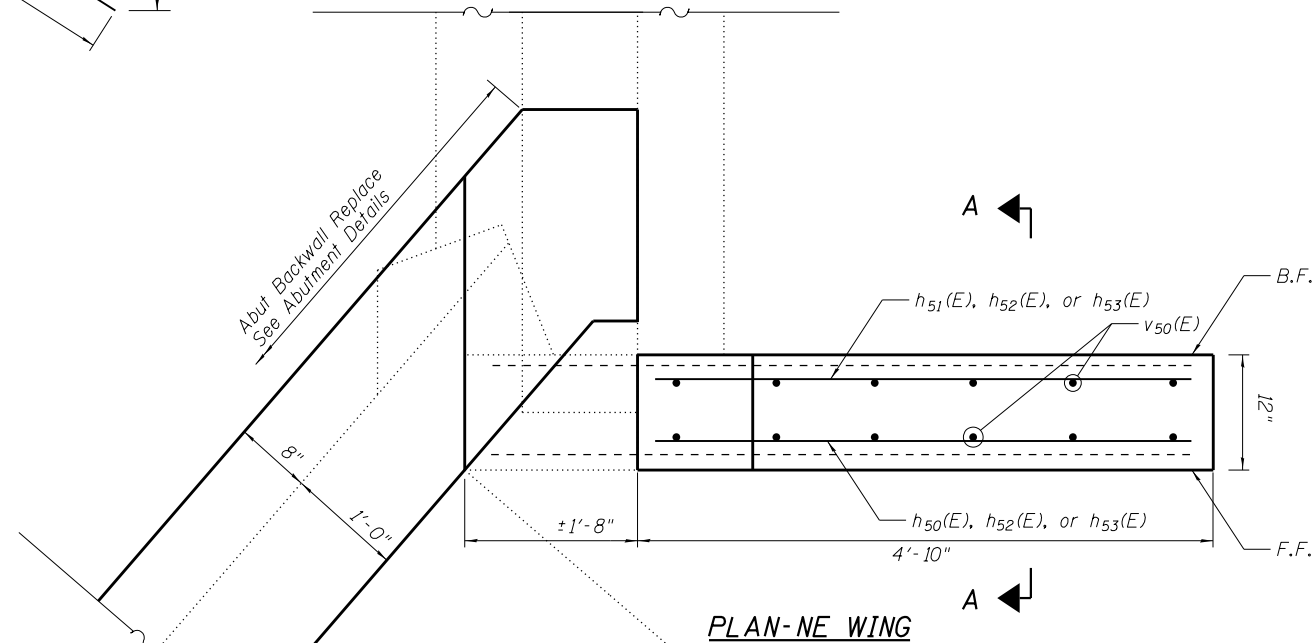
BAR $h_{53}(E)$



NE WING ELEVATION

* Existing rebar to remain in place shall be cleaned and lapped to $h_{50}(E)$ or $h_{51}(E)$ bars.
 B.F. indicates Back Face.
 F.F. indicates Front Face.
 E.F. indicates Each Face.

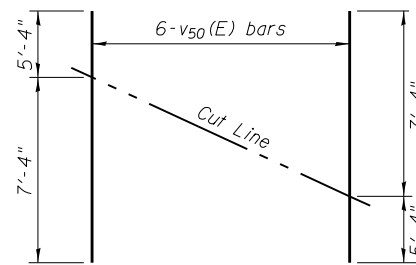
For additional details at North Abutment
 See sheet 22 of 29.



PLAN-NE WING

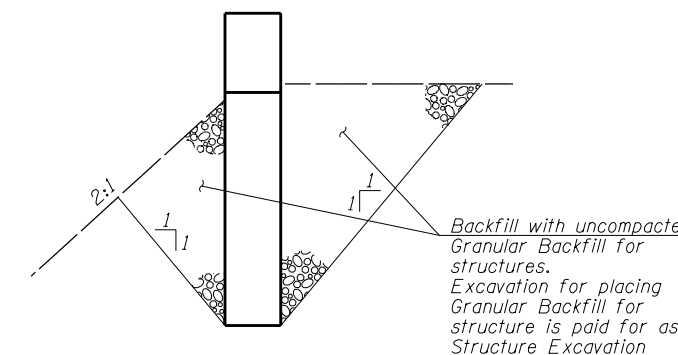
BILL OF MATERIAL

Bar	No.	Size	Length	Shape
$h_{50}(E)$	7	#4	4'-7"	—
$h_{51}(E)$	7	#6	4'-7"	—
$h_{52}(E)$	2	#5	3'-0"	—
$h_{53}(E)$	2	#5	5'-2"	—
$v_{50}(E)$	6	#5	12'-8"	—
Structure Excavation			Cu Yd	11
Concrete Removal			Cu Yd	2
Concrete Structures			Cu Yd	1.3
Reinforcement Bars Epoxy Coated			Pound	170
Granular Backfill for Structures			Cu Yd	11



FIELD CUTTING DIAGRAM

Order $v_{50}(E)$ bars full length. Cut as shown
 and use remainder of bars in opposite face
 of wall.



**SECTION A-A
 BACKFILL DETAIL**

**BENTON & ASSOCIATES, INC.
 QUIGG ENGINEERING, INC.**

FILE NAME	USER NAME	DESIGNED - DRB	REVISED
0600104-76G10-028-NE Wing Wall Detail.dgn		CHECKED - MBH	REVISED
		DRAWN - SDM	REVISED
		CHECKED - JK	REVISED

**STATE OF ILLINOIS
 DEPARTMENT OF TRANSPORTATION**

**NORTHEAST WINGWALL DETAIL
 STRUCTURE NO. 060-0104**

SHEET NO. 28 OF 29 SHEETS

F.A.I. RTE.	SECTION	COUNTY	TOTAL SHEETS	SHEET NO.
55	60-2HB-2	MADISON	52	46
CONTRACT NO. 76G10				

ILLINOIS FED. AID PROJECT