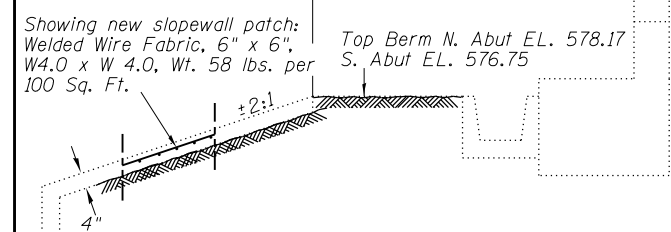
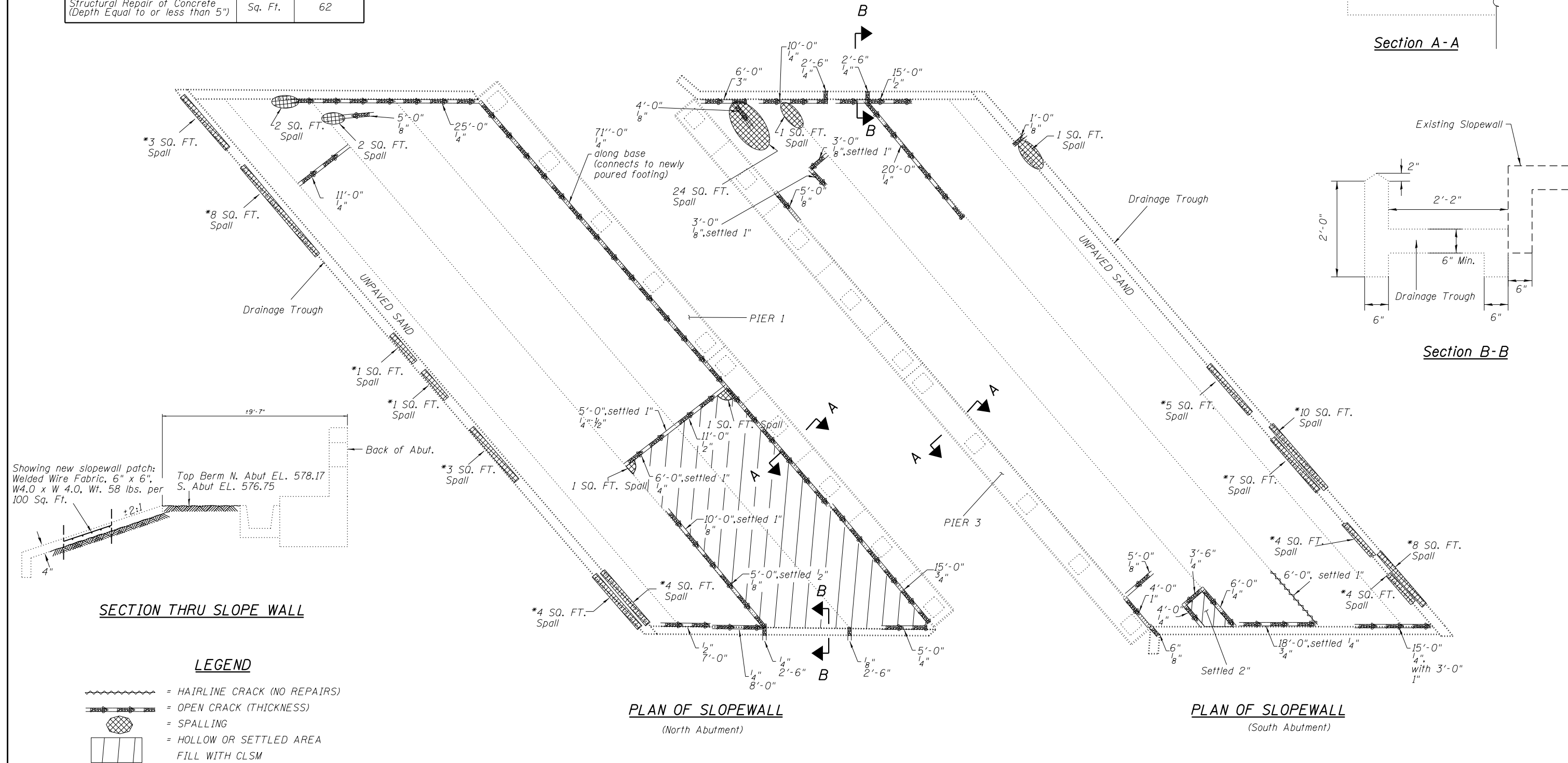
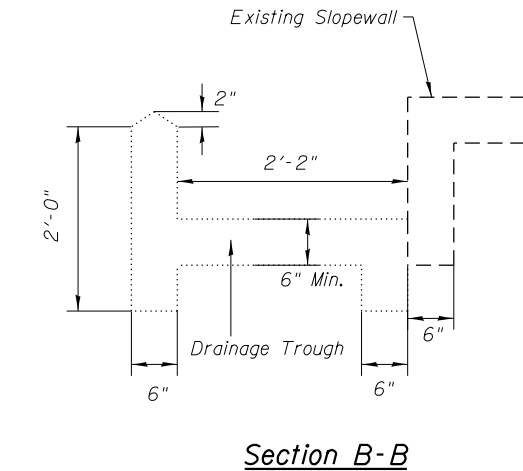
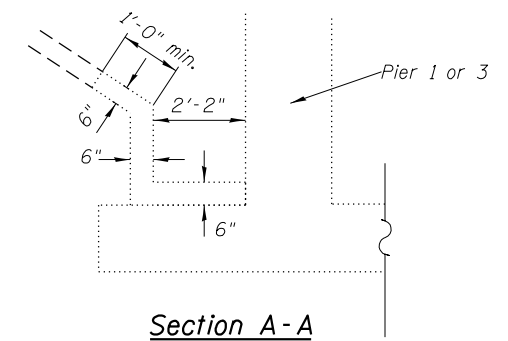


BILL OF MATERIAL

Item	Unit	Quantity
Slopedwall Removal	Sq. Yd.	4
Slopedwall, 4"	Sq. Yd.	4
Sealing Cracks	Foot	320
Controlled Low Strength Material	Cu. Yd.	33
Structural Repair of Concrete (Depth Equal to or less than 5")	Sq. Ft.	62

- Slopedwall Notes:
1. Open cracks shall be filled. Cost included in SEALING CRACKS. See Special Provisions.
 2. Spalled Slopedwall shall be removed as SLOPEWALL REMOVAL and Patched with SLOPEWALL, 4".
 3. Spalled areas of drainage troughs shall be repaired using STRUCTURAL REPAIR OF CONCRETE (DEPTH EQUAL TO OR LESS THAN 5").
 4. The length of overlap between the outermost cross wires of new and existing Welded Wire Fabric shall be 8" min.



LEGEND

- = HAIRLINE CRACK (NO REPAIRS)
- = OPEN CRACK (THICKNESS)
- = SPALLING
- = HOLLOW OR SETTLED AREA FILL WITH CLSM

*INDICATES STRUCTURAL REPAIR OF CONCRETE (DEPTH EQUAL TO OR LESS THAN 5")

BENTON & ASSOCIATES, INC.
QUIGG ENGINEERING, INC.

FILE NAME 0600104-76G10-027-Slopedwall.dgn	USER NAME =	DESIGNED - DRB	REVISIONS	STATE OF ILLINOIS DEPARTMENT OF TRANSPORTATION	SLOPEWALL STRUCTURE NO. 060-0104	F.A.I. R.E. = 55	SECTION = 60-2HB-2	COUNTY = MADISON	TOTAL SHEETS = 52	SHEET NO. = 45
PLOT SCALE =	DRAWN - SDM	REVISIONS	CONTRACT NO. 76G10							
PLOT DATE =	CHECKED - JK	REVISIONS	ILLINOIS FED. AID PROJECT							
SHEET NO. 27 OF 29 SHEETS										