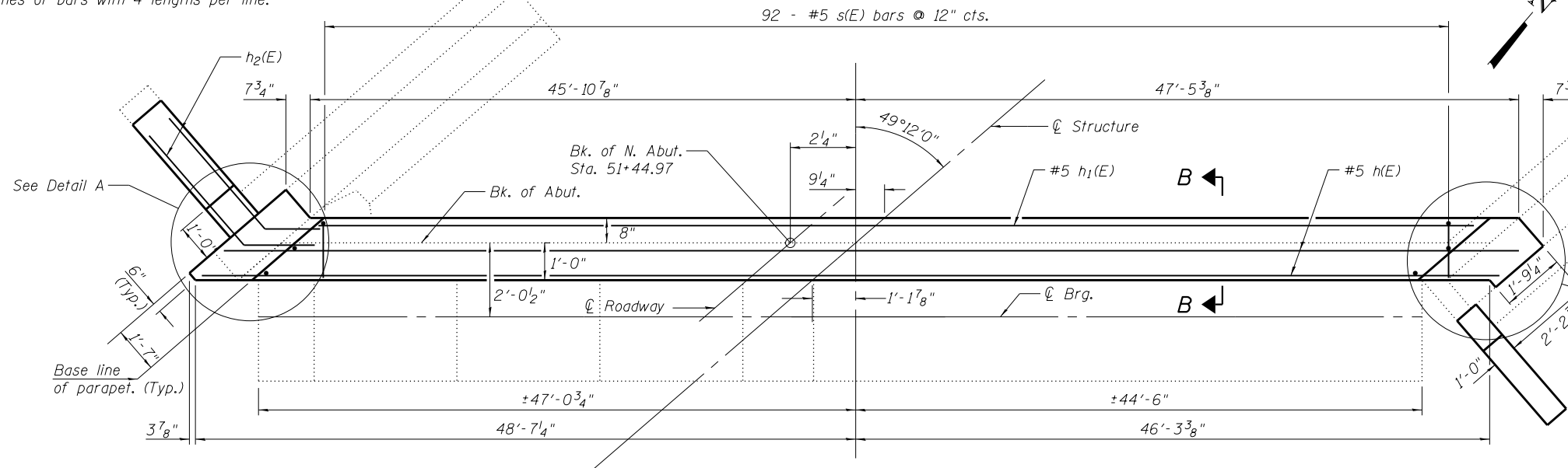


Notes:
 For Concrete Removal and Structure Repair details see sheet 21 of 29.
 Bars indicated thus 3x4 - #5 etc. indicates 3 lines of bars with 4 lengths per line.



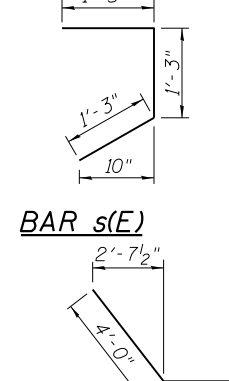
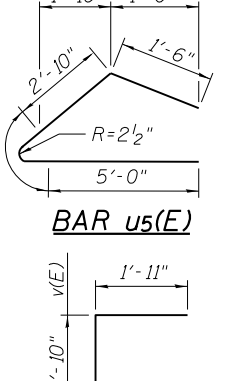
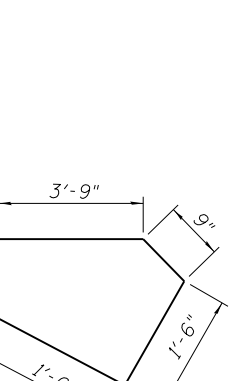
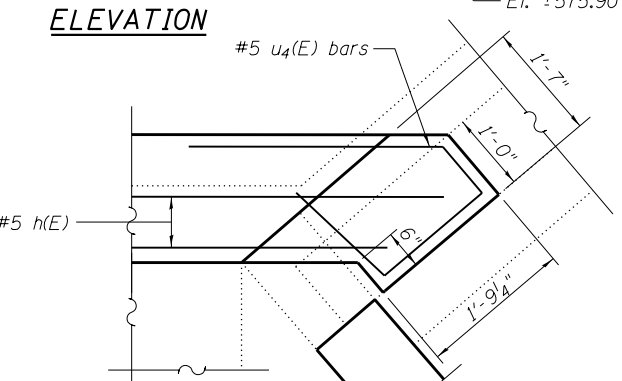
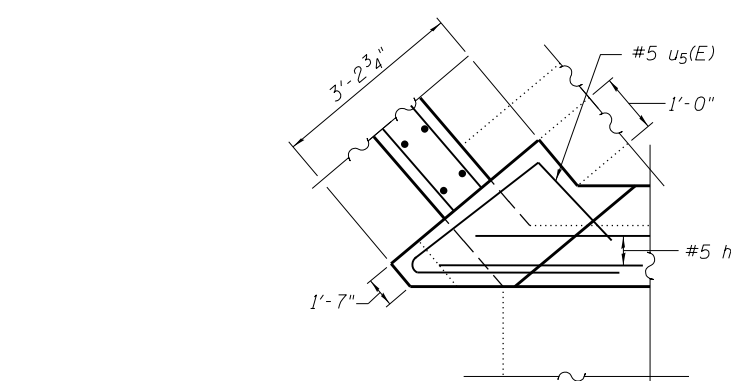
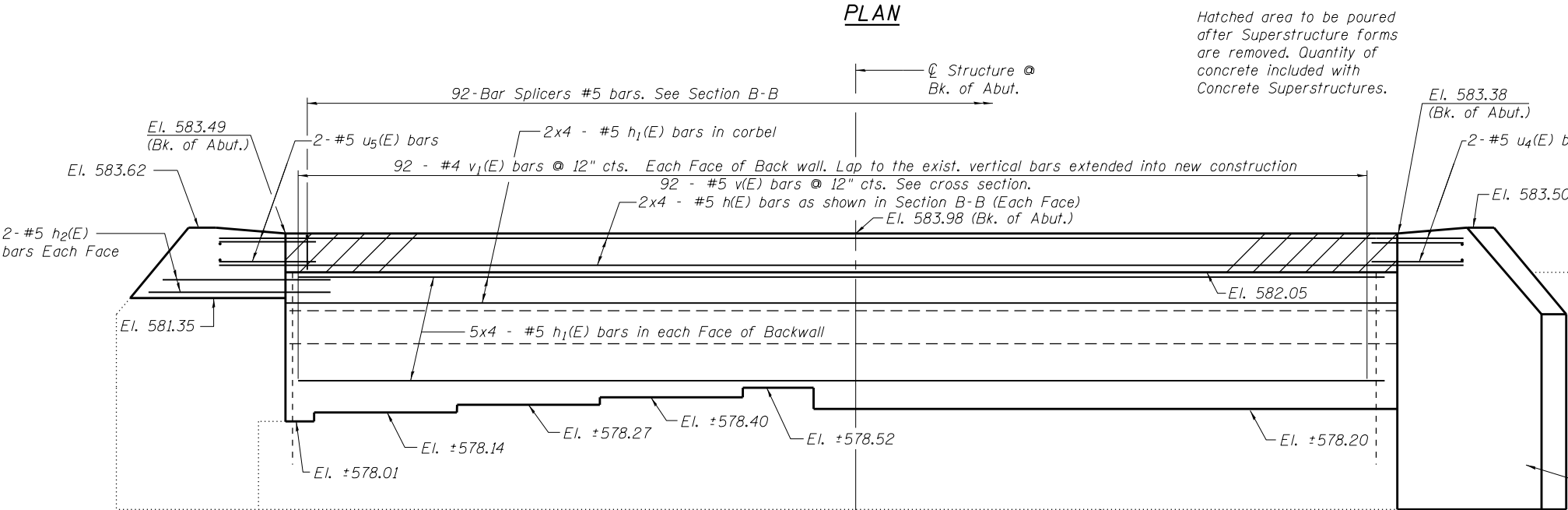
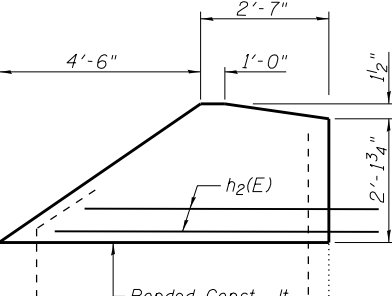
BILL OF MATERIAL

Bar	No.	Size	Length	Shape
h(E)	16	#5	25'-0"	—
h ₁ (E)	48	#5	25'-9"	—
h ₂ (E)	4	#5	6'-0"	—
s(E)	92	#5	3'-11"	⌋
u ₄ (E)	2	#5	7'-6"	⌋
u ₅ (E)	2	#5	9'-11"	⌋
v(E)	92	#5	3'-9"	⌋
v ₁ (E)	184	#4	5'-0"	—

Concrete Structure	Cu. Yds.	18.1
Reinforcement bars, Epoxy Coated	Pounds	3120
Structure Excavation	Cu. Yds.	35
Concrete Sealer	Sq. Ft.	767
Granular Backfill for Structures	Cu. Yds.	35

MIN BAR LAPS
 #5 bars = 2'-7"

SECTION B-B



Incorporate existing #4 bars into new concrete E.F.

N.W. Wingwall

BENTON & ASSOCIATES, INC.
QUIGG ENGINEERING, INC.

DETAIL A

DETAIL B

BAR u4(E)

BAR v(E)

BAR h2(E)