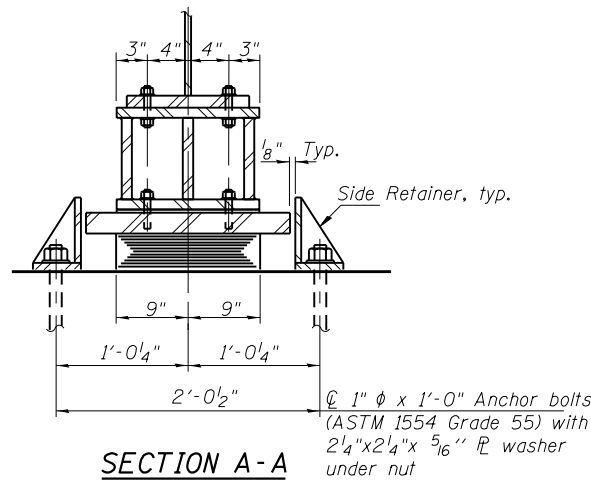


ELEVATION AT PIERS 1 & 3



SECTION A-A

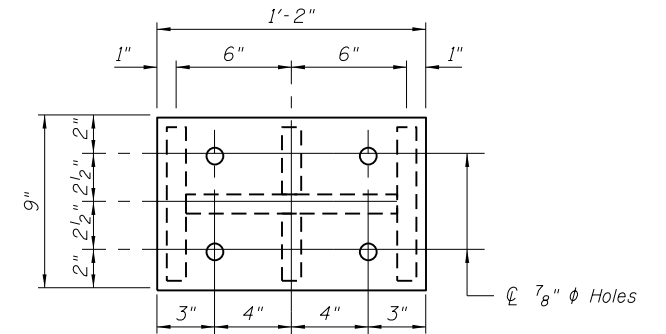
GIRDER REACTIONS

Exp. Bearings, piers 1 & 3

R _L	(k)	99
R _T	(k)	48.8
IMP.	(k)	13.0
R _{Total}	(k)	160.8

R_L (steel only) = 13.4 kips

The Contractor shall field verify steel extensions and shim plates required to insure that the actual existing top of beam elevations are maintained.



PLAN TOP AND BOTTOM PLATE

(Steel Extension)

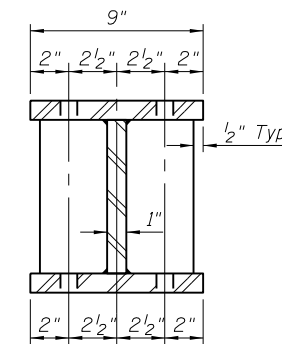
TYPE I ELASTOMERIC EXP. BRG.

20 Each, Piers 1 & 3

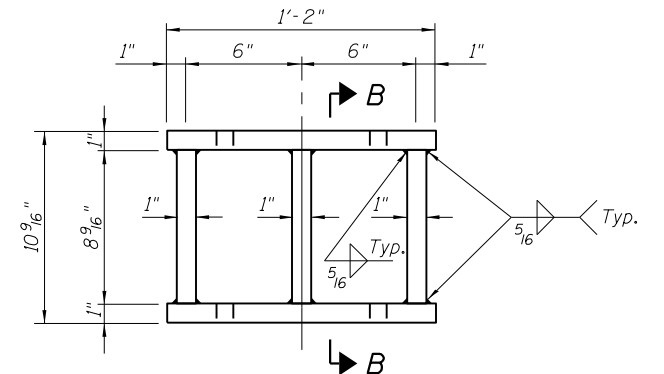
Notes:
 New steel extensions, side retainers, shim R's, and connection bolts, are included in "Furnishing and Erecting Structural Steel."
 Prior to ordering any material, the Contractor shall verify in the field all bearing height and shim thickness dimensions. Recommended min. jack capacity = 30 Ton.
 Hatched area indicates bearing removal
 See Special Provisions for "Jack and Remove Existing Bearings"
 Anchor bolts shall be ASTM F1554 all-thread (or an Engineer-approved alternate material) of the grade(s) and diameter(s) specified. The corresponding specified grade of AASHTO M314 anchor bolts may be used in lieu of ASTM F1554.
 Drilled and set anchor bolts shall be installed according to Article 521.06 of the Standard Specifications.

* The structural steel plates of the Bearing Assembly shall conform to the requirements of AASHTO M 270 Grade 50.

Two 1/8 in. adjusting shims shall be provided for each bearing in addition to all other plates or shims and placed as shown on bearing details.

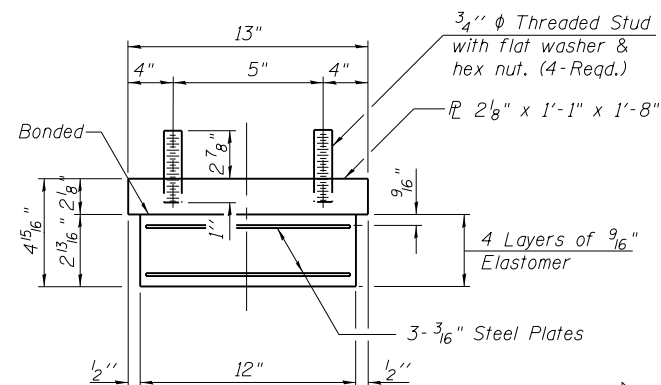


SECTION B-B

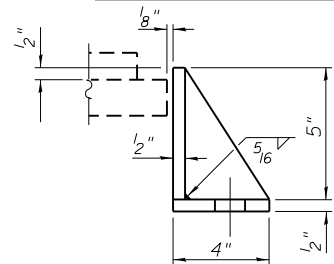


STEEL EXTENSION DETAIL

Piers 1 & 3 - 20 Req'd

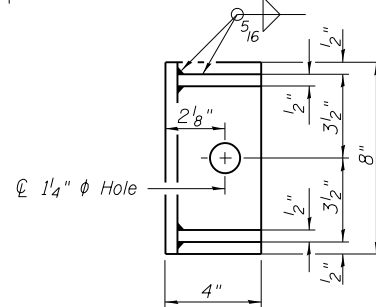


BEARING ASSEMBLY



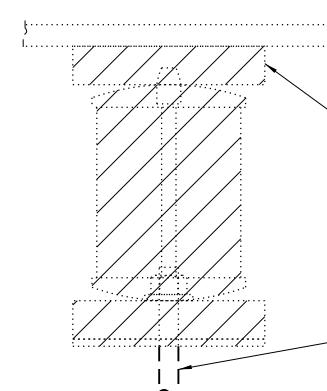
SIDE RETAINER

Equivalent rolled angle with stiffeners will be allowed in lieu of welded plates. Weight included with Structural Steel.



SHIM R HEIGHT TABLE

Beams	Pier 1	Pier 3
1	11/16"	11/16"
2	5/16"	9/16"
3	7/16"	7/16"
4	7/16"	1/4"
5	7/16"	1/8"
6	1/4"	1/4"
7	1/4"	1/4"
8	0"	7/16"
9	5/16"	5/16"
10	7/16"	1/4"



ROCKER BRGS

Piers 1 & 3
 Replace exist. rocker bearings with Type I Elastomeric Bearing and Steel Extension

Existing R to be removed using the air-arc method and grind smooth all weld material remaining on the bottom flange. Cost included in "Jack and Remove Existing Bearings".

Burn existing anchor bolts flush with existing concrete surface. Grind existing anchor bolt smooth and seal with epoxy. Cost included in "Jack and Remove Existing Bearings".

EXISTING BEARING REMOVAL DETAIL

BENTON & ASSOCIATES, INC.
QUIGG ENGINEERING, INC.

FILE NAME 0600104-76G10-020-BearingAssembly.dgn	USER NAME =	DESIGNED - DRB	REVISED
		CHECKED - MBH	REVISED
		DRAWN - TF	REVISED
		CHECKED - JK	REVISED

STATE OF ILLINOIS
DEPARTMENT OF TRANSPORTATION

BEARING DETAILS
STRUCTURE NO. 060-0104

SHEET NO. 20 OF 29 SHEETS

F.A.I. R.E.	SECTION	COUNTY	TOTAL SHEETS	SHEET NO.
55	60-2HB-2	MADISON	52	38
CONTRACT NO. 76G10				
ILLINOIS FED. AID PROJECT				