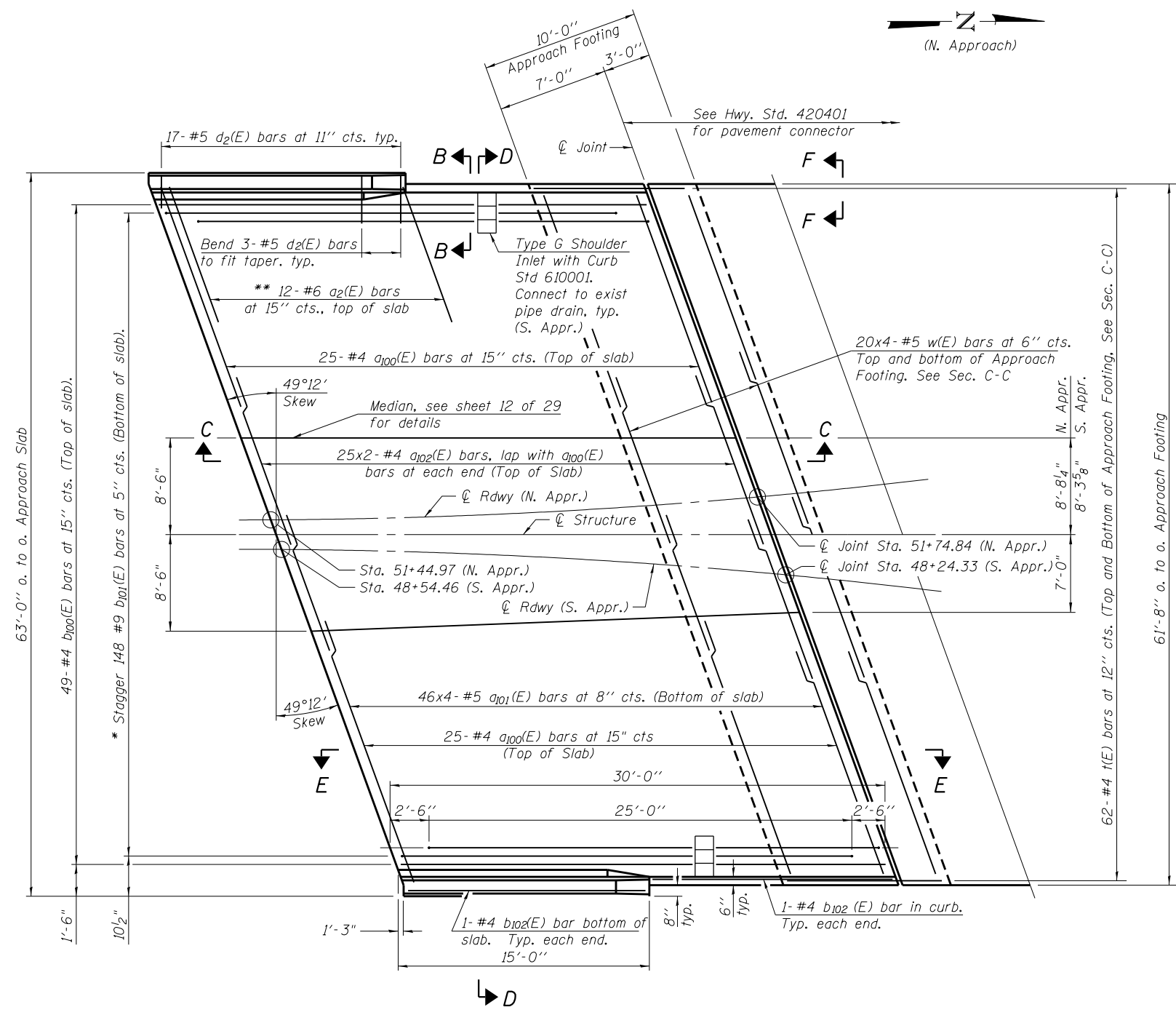


Notes:
 See sheet 17 of 29 for Sections C-C & D-D and View E-E.
 $a_2(E)$, $a_{100}(E)$, $a_{101}(E)$ and $a_{102}(E)$ bar spacings measured along C Rdwy.
 The joint opening shall be determined per Article 520.04 of
 the Standard Specifications. The minimum dimension shall be
 $1\frac{1}{2}$ " for installation purposes.

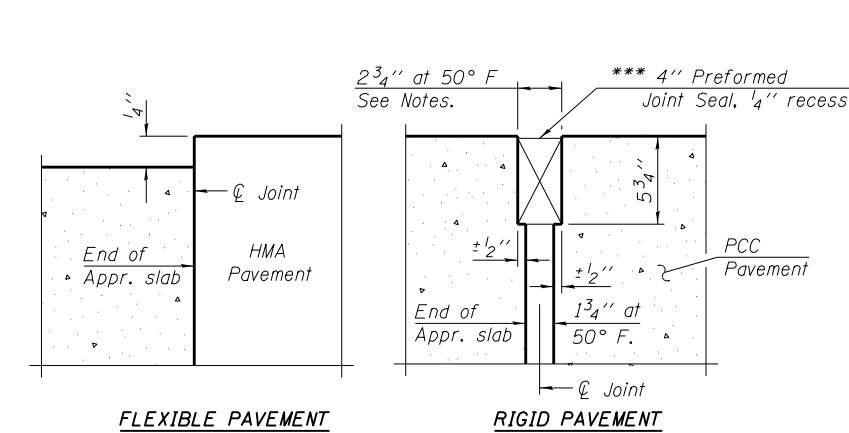
*** Cost included with Concrete Superstructure.



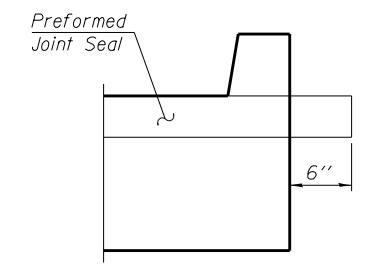
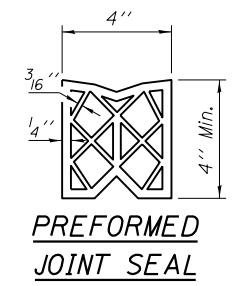
PLAN

* Tilt #9 $b_{101}(E)$ bars as required to maintain clearance.
 ** Space between $a_{100}(E)$ bars, typ. each parapet.

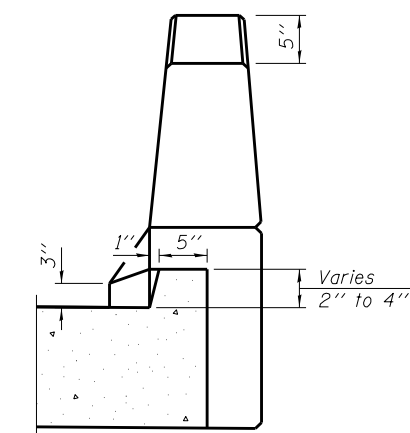
MINIMUM BAR LAP
 #4 bar = 2'-4"
 #5 bar = 2'-7"



DETAIL A



VIEW F-F



VIEW B-B

BA-R
 BENTON & ASSOCIATES, INC.
 QUIGG ENGINEERING, INC.

12-12-12

FILE NAME	USER NAME =	DESIGNED - DRB	REVISED
0600104-76G10-016-ApproachSlabDetails01.dgn		CHECKED - MBH	REVISED
	PLOT SCALE =	DRAWN - KC	REVISED
	PLOT DATE =	CHECKED - JK	REVISED

STATE OF ILLINOIS
 DEPARTMENT OF TRANSPORTATION

BRIDGE APPROACH SLAB DETAILS
 STRUCTURE NO. 060-0104

SHEET NO. 16 OF 29 SHEETS

F.A.I. RTE.	SECTION	COUNTY	TOTAL SHEETS	SHEET NO.
55	60-2HB-2	MADISON	52	34
CONTRACT NO. 76G10				

ILLINOIS FED. AID PROJECT

(Sheet 1 of 2)