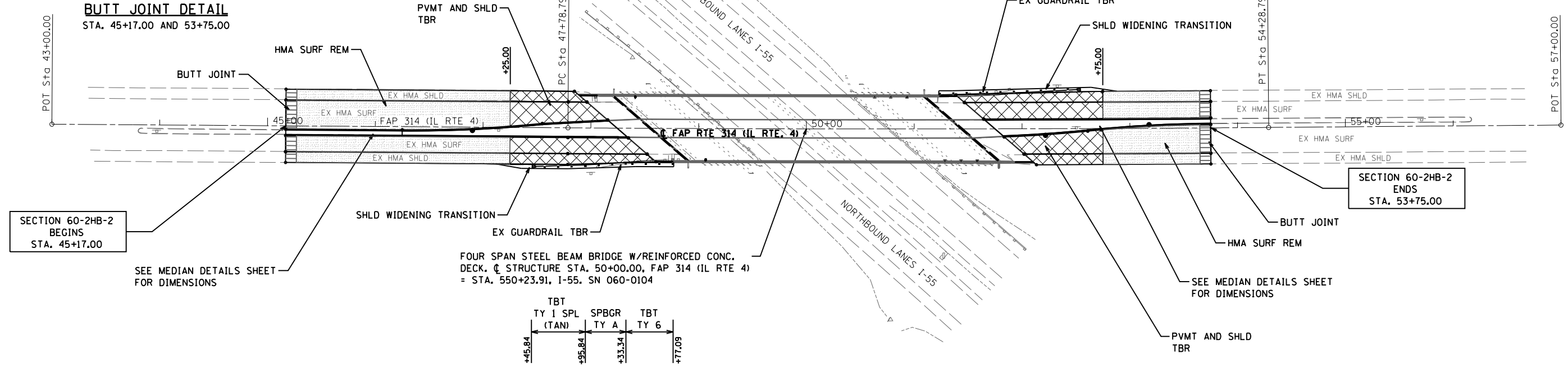
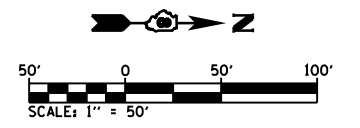
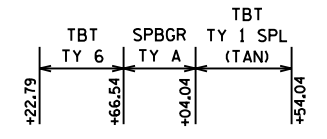


BUTT JOINT DETAIL
STA. 45+17.00 AND 53+75.00

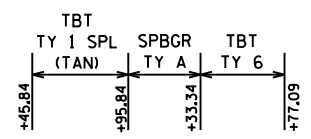
EXIST. CURVE CL RTE 4-1
 PI STA. = 51+03.80
 $\Delta = 0^\circ 52' 00''$ (LT)
 $D = 0^\circ 08' 00''$
 $R = 42,971.80'$
 $T = 325.01'$
 $L = 650.00'$
 $E = 1.23'$
 P.C. STA. = 47+78.79
 P.T. STA. = 54+28.79



SECTION 60-2HB-2
BEGINS
STA. 45+17.00

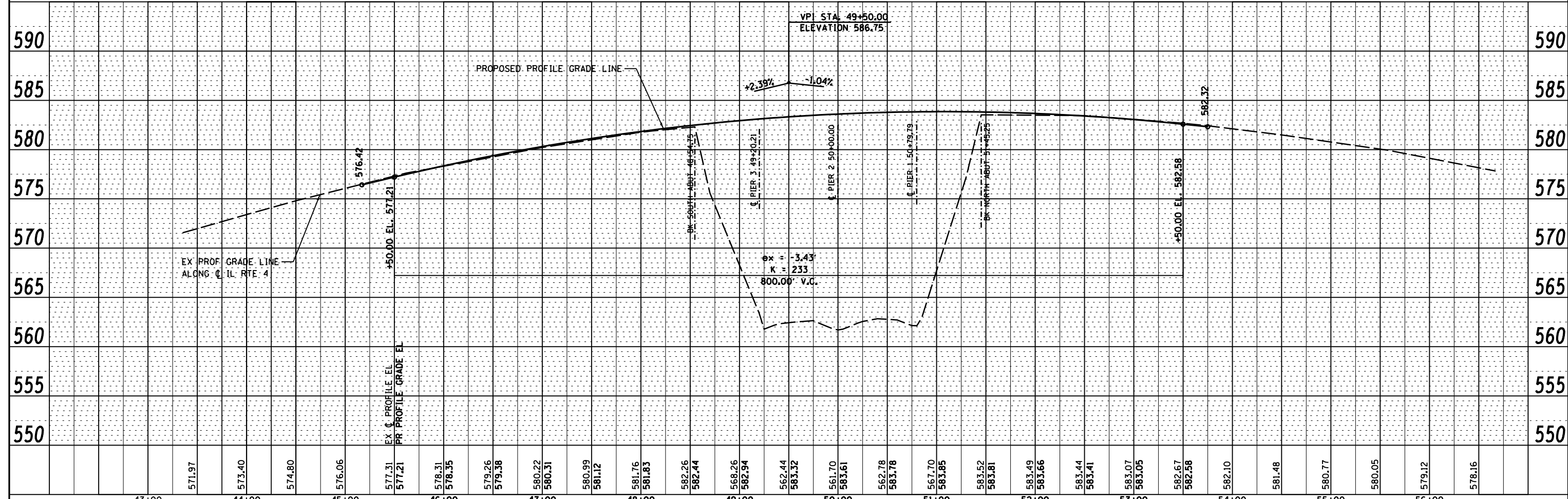
SECTION 60-2HB-2
ENDS
STA. 53+75.00

FOUR SPAN STEEL BEAM BRIDGE W/REINFORCED CONC. DECK, C. STRUCTURE STA. 50+00.00, FAP 314 (IL RTE 4) = STA. 550+23.91, I-55. SN 060-0104



PLAN	SURVEYED	DATE
	PLOTTED	
	ALIGNMENT CHECKED	
	STRUCTURE CHECKED	
	CADD FILE NAME	
	NO.	

PROFILE	SURVEYED	DATE
	GRADES CHECKED	
	STRUCTURE NOTATIONS CHECKED	
	NO.	



FILE NAME =	USER NAME = \$USER\$	DESIGNED -	REVISED -	STATE OF ILLINOIS DEPARTMENT OF TRANSPORTATION	PLAN AND PROFILE FAI 55	SCALE: SHEET 1 OF 1 SHEETS STA. TO STA.	F.A.I. RTE.	SECTION	COUNTY	TOTAL SHEETS	SHEET NO.
P:\10E2166-10\60-2HB-2 76G10 FAI 55\CADD	Sheets\0876G10-shr-plnprf.dgn	DRAWN - MGM	REVISED -				55	60-2HB-2	MADISON	52	14
Default	PLOT SCALE = 100.0000' / in.	CHECKED -	REVISED -				CONTRACT NO. 76G10				
	PLOT DATE = 7/10/2014	DATE - 6/30/14	REVISED -				ILLINOIS FED. AID PROJECT				