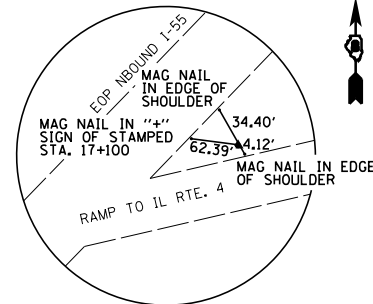
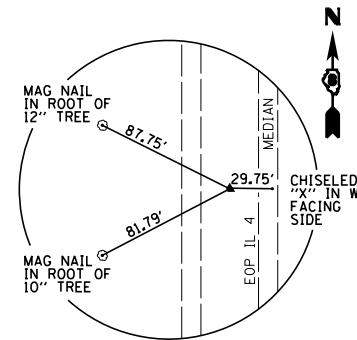


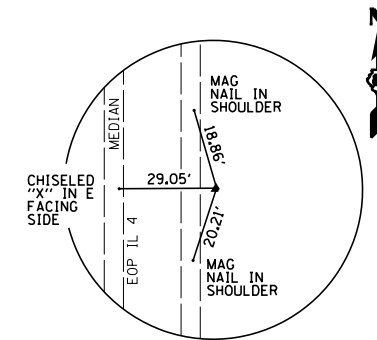
CP#482



**CP#482**  
IRON PIN WITH IDOT CAP

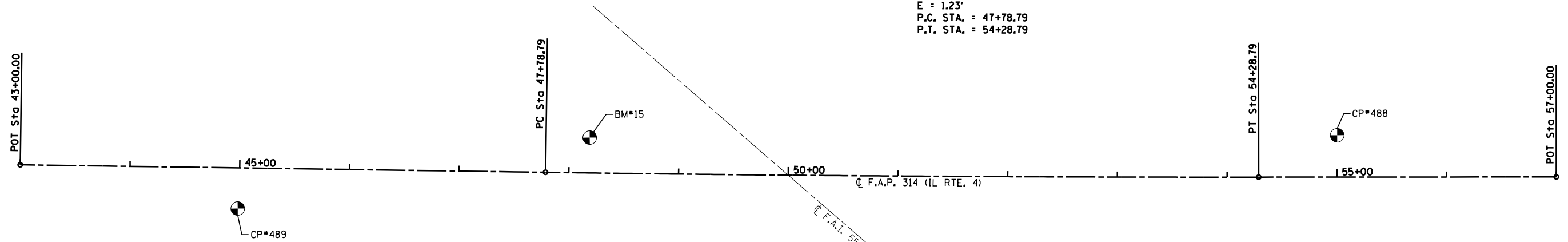


**CP#488**  
IRON PIN WITH IDOT CAP  
± 388' N OF BRIDGE



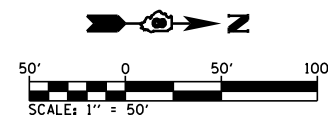
**CP#489**  
IRON PIN WITH IDOT CAP  
± 388' S OF BRIDGE

EXIST. CURVE CL RTE4-1  
 PI STA. = 51+03.80  
 $\Delta$  = 0° 52' 00" (LT)  
 D = 0° 08' 00"  
 R = 42,971.80'  
 T = 325.01'  
 L = 650.00'  
 E = 1.23'  
 P.C. STA. = 47+78.79  
 P.T. STA. = 54+28.79



**GROUND COORDINATES**

DESCRIPTION	POINT NO.	NORTHING	EASTING
FAP RTE. 314 (IL RTE. 4)			
POT STA. 43+00.00		824300.7059	400675.9930
PC STA. 47+78.79		824779.4507	400682.8602
PI STA. 51+03.80		825104.4232	400687.5217
PT STA. 54+28.79		825429.4290	400687.2673
POT STA. 57+00.00		825700.6389	400687.0549
CONTROL POINTS			
CP#482		824134.8253	400080.5268
CP#488		825500.9601	400649.0623
CP#489		824498.8444	400715.8524



BM-15  
 CHISELED SQUARE FOUND IN THE CENTER OF  
 HEADWALL OF DOUBLE BOX CULVERT  
 (SN-060-2015) @ E. SIDE OF RAMP FOR NB I-55  
 TO IL RTE. 4 ± 33.08 MILE MARKER  
 ELEV=550.734'

FILE NAME =	USER NAME = \$USER\$	DESIGNED -	REVISED -
P:\10E2166-10\60-2HB-2 76G10 FAI 55\CADD	Sheets\0876G10-ATB.dgn	DRAWN SDW	REVISED -
Default	PLOT SCALE = 100.0000' / in.	CHECKED -	REVISED -
	PLOT DATE = 7/10/2014	DATE 6/30/14	REVISED -

**STATE OF ILLINOIS**  
**DEPARTMENT OF TRANSPORTATION**

**ALIGNMENT, TIES, & BENCHMARKS**  
**FAI 55**

SCALE: SHEET 1 OF 1 SHEETS STA. TO STA.

F.A.I. RTE.	SECTION	COUNTY	TOTAL SHEETS	SHEET NO.
55	60-2HB-2	MADISON	52	13
<b>CONTRACT NO. 76G10</b>				
ILLINOIS FED. AID PROJECT				