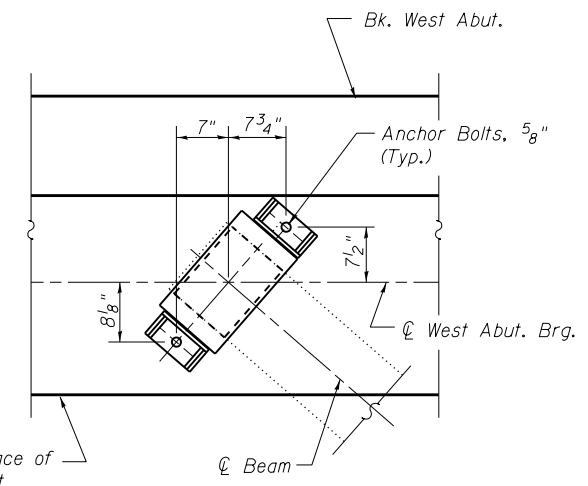
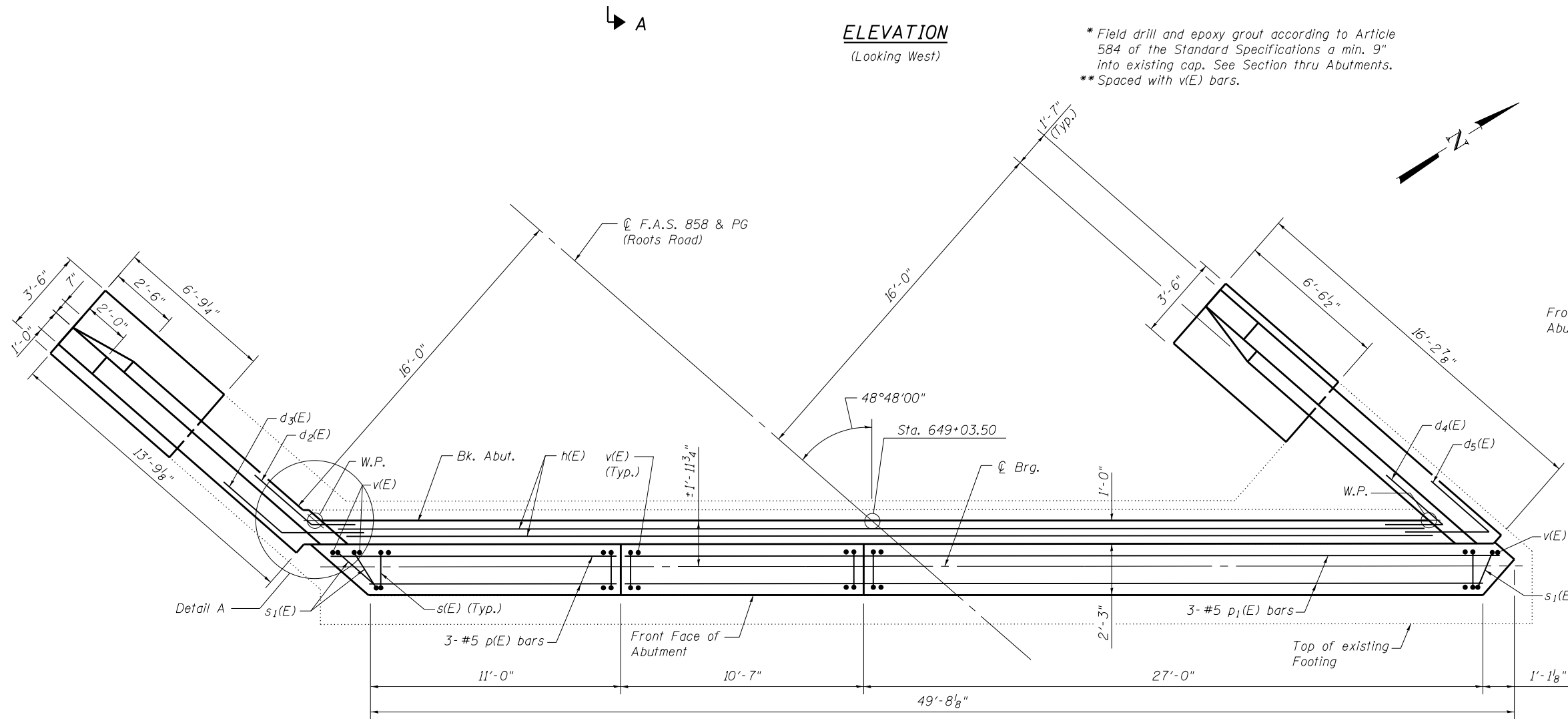
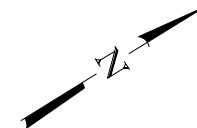


DETAIL A

ELEVATION
(Looking West)

* Field drill and epoxy grout according to Article 584 of the Standard Specifications a min. 9" into existing cap. See Section thru Abutments.
** Spaced with v(E) bars.



**ANCHOR BOLT DETAIL
WEST ABUTMENT**

Notes:
Cut p(E) and p₁(E) bars to fit with 2" clear.
For Section A-A, Bar Bends and Bill of Material see sheet 20 of 26.
Hatched area quantity of concrete included with Concrete Superstructure.
Space reinforcement to miss Anchor Bolts.
Bars shall be drilled and grouted according to Section 584 of the Standard Specifications.
See sheet 19 of 26 for Wing Wall Details.

PLAN

FILE NAME = 0790020-76409-016-W Abut Dtlis.dgn
USER NAME = ckatveit
DESIGNED - BB
CHECKED - ACS
DRAWN - WJS
CHECKED - CJF
PLOT SCALE =
PLOT DATE = 1:36:22 PM 7/28/2014

DESIGNED - BB
CHECKED - ACS
DRAWN - WJS
CHECKED - CJF
REVISED -
REVISED -
REVISED -
REVISED -

**STATE OF ILLINOIS
DEPARTMENT OF TRANSPORTATION**

**WEST ABUTMENT
STRUCTURE NO. 079-0020**

SHEET NO. 16 OF 26 SHEETS

F.A.S. RTE.	SECTION	COUNTY	TOTAL SHEETS	SHEET NO.
858	12VB-II	RANDOLPH	72	62
CONTRACT NO. 76409				

ILLINOIS FED. AID PROJECT