

Bench Mark: Cut "□" on bridge curb at N.W. corner of S.N. 079-0020 Elev. 429.14

Existing Structure: #079-0020 was constructed in 1960 under F.A. 182 Section 12VB at Sta. 650+10.50. The structure consists of a three span non-composite reinforcement concrete deck on steel stringers. The spans measure 63'-6", 81'-0" and 63'-6" respectively. The out-to-out width is 33'-8" with a roadway width of 28'-0" and back-to-back of abutment length of 214'-0". The structure is supported on steel piles at the abutments and spread footings at the piers. Traffic to be detoured during construction.

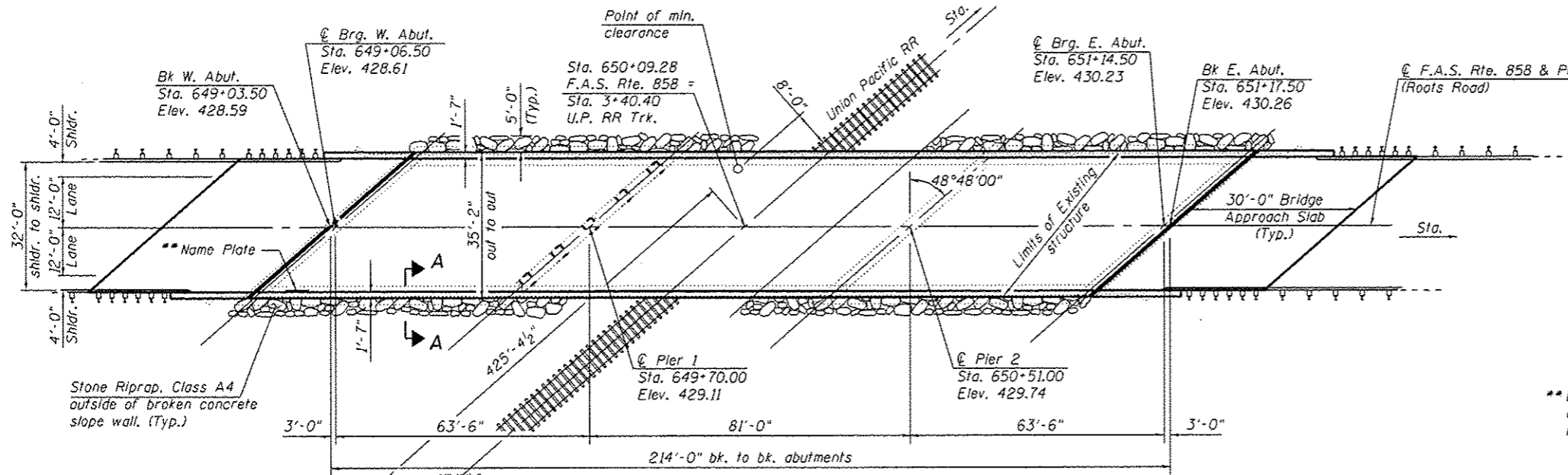
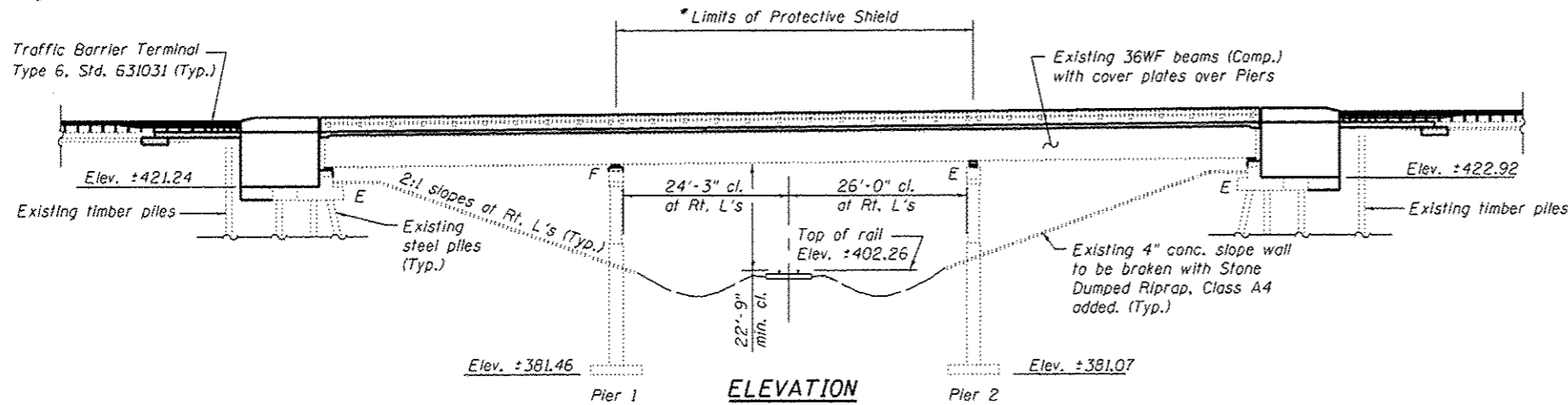
APPROVED
For Structural Adequacy Only
De Carl Prayton
Engineer of Bridges & Structures

* See Sheet 2 of 26 for limits of Protective Shield

INDEX OF SHEETS

1. General Plan & Elevation
2. General Data
- 3.-5. Top of Slab Elevations
6. West Approach Pavement Top of Slab Elevations
7. East Approach Pavement Top of Slab Elevations
8. Superstructure
9. Superstructure Details
- 10.-11. Bridge Approach Slab Details
12. Structural Steel Details
- 13.-14. Bearing Details
15. West Abutment Concrete Removal
16. West Abutment
17. East Abutment Concrete Removal
18. East Abutment
- 19.-20. Abutment Details
- 21.-22. Pier 1 Details
23. Slopewall Details
24. Preformed Joint Strip Seal
25. Concrete Parapet Slipforming Option
26. Bar Splicer Assembly & Mechanical Splicer Details

No Salvage



STATION 650+10.50
RE-BUILT 20__ BY
STATE OF ILLINOIS
F.A.S. RT. 858 SEC. 12VB-11
LOADING HS20-44
STRUCTURE NO. 079-0020

NAME PLATE
See Std. 515001

** Existing Name Plates to be cleaned and relocated next to new Name Plate. Cost included with Name Plates.

LOADING HS20-44

No future wearing surface allowed.

DESIGN SPECIFICATIONS

SUPERSTRUCTURE
2002 AASHTO Standard Specifications for Highway Bridges, 17th Edition

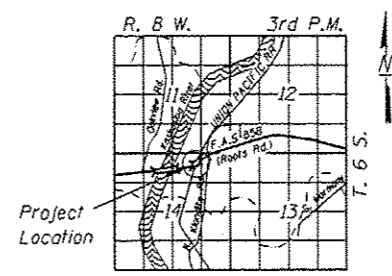
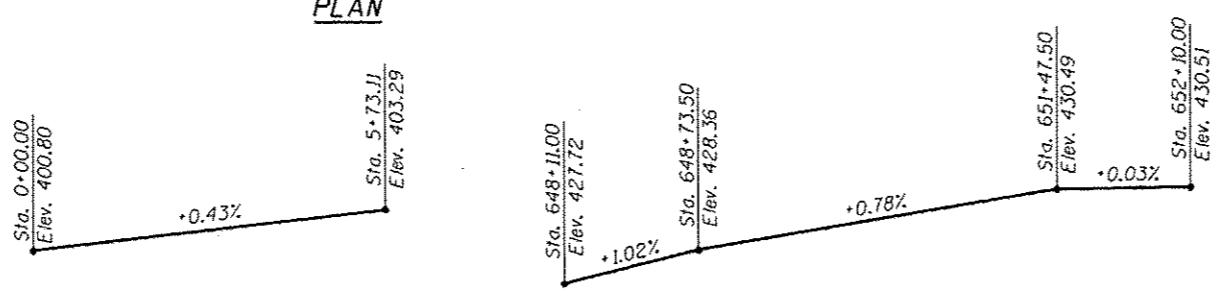
DESIGN STRESSES

EXISTING STRUCTURE
f'c = 3,500 psi
fy = 40,000 psi (Reinforcement)
fy = 33,000 psi (Structural Steel)

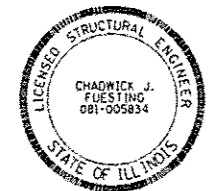
NEW CONSTRUCTION
f'c = 3,500 psi
fy = 60,000 psi (Reinforcement)

SEISMIC DATA

Seismic Performance Category (SPC) = B
Horizontal Bedrock Acceleration Coefficient (A) = 0.13g
Site Coefficient (S) = 1.2



GENERAL PLAN & ELEVATION
ROOTS RD. OVER UNION PACIFIC R.R.
F.A.S. RTE. 858 - SEC. 12VB-11
RANDOLPH COUNTY
STATION 650+10.50
STRUCTURE NUMBER 079-0020



EXP. 11-30-2014
Chadwick J. Fuesting 5/22/2014

FILE NAME: 0790020-76409-001-GPE.dgn	USER NAME: cja/vml	DESIGNED: BB	REVISIONS:	STATE OF ILLINOIS DEPARTMENT OF TRANSPORTATION	SHEET NO. 1 OF 26 SHEETS
DESIGNED: BB	CHECKED: ACS	REVISIONS:			
ILLINOIS DESIGN FIRM NUMBER 184.001670	DRAWN: WJS	REVISIONS:			
PLDT SCALE:	CHECKED: CJF	REVISIONS:			
PLDT DATE: 12/16/09 PM 1/28/2014					

F.A.S. RTE.	SECTION	COUNTY	TOTAL SHEETS	SHEET NO.
858	12VB-11	RANDOLPH	72	47
CONTRACT NO. 76409				