

STATE OF ILLINOIS  
DEPARTMENT OF TRANSPORTATION  
DIVISION OF HIGHWAYS

**PROPOSED  
HIGHWAY PLANS**

VARIOUS ROUTES  
SECTION MEREDOSIA BDGE TREE REM 2014  
PROJECT: ACF-000V(001)  
TREE REMOVAL  
PIKE AND MORGAN COUNTIES

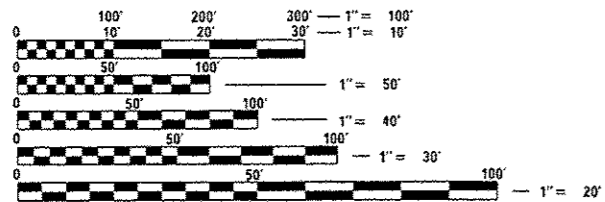
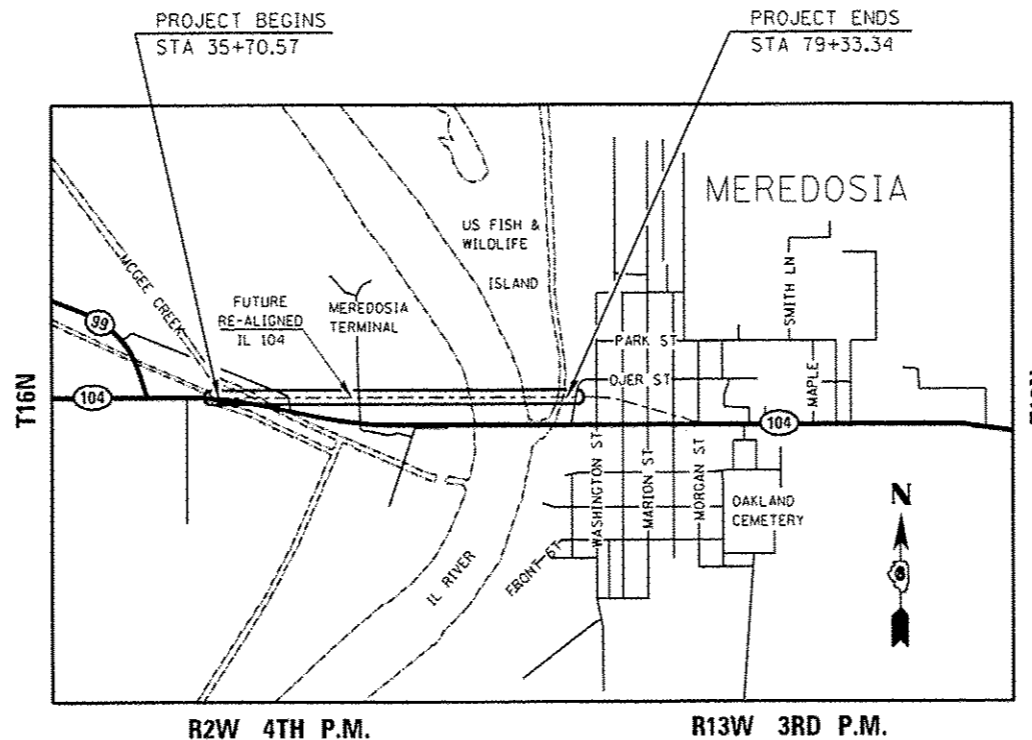
C-96-099-14

FOR INDEX OF SHEETS, SEE SHEET NO. 2

F.A. RTE.	SECTION	COUNTY	TOTAL SHEETS	SHEET NO.
*VAR	**	*	9	1
		ILLINOIS	CONTRACT NO. 72H28	

\*\* MEREDOSIA BDGE TREE REM 2014  
\* PIKE/MORGAN

D-96-099-14



FULL SIZE PLANS HAVE BEEN PREPARED USING STANDARD ENGINEERING SCALES. REDUCED SIZED PLANS WILL NOT CONFORM TO STANDARD SCALES. IN MAKING MEASUREMENTS ON REDUCED PLANS, THE ABOVE SCALES MAY BE USED.

J.U.L.I.E.  
JOINT UTILITY LOCATION INFORMATION FOR EXCAVATION  
1-800-892-0123  
OR 811

PROJECT ENGINEER: KEITH DONOVAN (217)782-4761  
TEAM MANAGER: TOM COX (217)557-6349  
CONTRACT NO. 72H28

STATE OF ILLINOIS  
DEPARTMENT OF TRANSPORTATION  
DIVISION OF HIGHWAYS

SUBMITTED July 3 20 14  
Raja Z...  
DEPUTY DIRECTOR OF HIGHWAYS, REGION ENGINEER

Aug 15 20 14  
John D. Baranzelli, P.E.  
ENGINEER OF DESIGN AND ENVIRONMENT

Aug 15 20 14  
Omer Osman, P.E.  
DIRECTOR OF HIGHWAYS, CHIEF ENGINEER

PRINTED BY THE AUTHORITY  
OF THE STATE OF ILLINOIS

INDEX OF SHEETS

1. COVER SHEET
2. GENERAL NOTES
3. SUMMARY OF QUANTITIES
4. SCHEDULE OF QUANTITIES
- 5.-9. PLAN SHEETS

GENERAL NOTES

1. ANY REFERENCE TO A STANDARD IN THESE PLANS SHALL BE INTERPRETED TO MEAN THE EDITION AS INDICATED BY THE SUBNUMBER LISTED ON THE INDEX OF SHEETS OR THE COPY OF THE STANDARD INCLUDED IN THESE PLANS.
2. THE LOCATIONS OF THE BURIED AND ABOVE GROUND UTILITIES SHOWN IN THE PLANS ARE APPROXIMATE. THE CONTRACTOR SHALL BE RESPONSIBLE FOR PROTECTING UTILITY PROPERTY FROM CONSTRUCTION OPERATIONS AS OUTLINED IN ARTICLE 107.26 OF THE STANDARD SPECIFICATIONS. THE J.U.L.I.E. NUMBER IS (800) 892-0123. A MINIMUM OF FORTY-EIGHT HOURS ADVANCED NOTICE IS REQUIRED PRIOR TO PROCEEDING WITH ANY EXCAVATION WORK ON THE PROJECT.
3. WHERE SECTION OR SUBSECTION MONUMENTS ARE ENCOUNTERED, THE ENGINEER SHALL BE NOTIFIED BEFORE SUCH MONUMENTS ARE REMOVED. THE CONTRACTOR SHALL PROTECT AND CAREFULLY PRESERVE ALL MONUMENTS UNTIL AN AUTHORIZED SURVEYOR OR AGENT HAS WITNESSED OR OTHERWISE REFERENCED THEIR LOCATION. THE CONTRACTOR SHALL BE RESPONSIBLE FOR HAVING AN AUTHORIZED SURVEYOR RE-ESTABLISH ANY SECTION OR SUBSECTION MONUMENTS DESTROYED BY HIS OPERATIONS.
4. UNLESS NOTED OTHERWISE, STATIONS AND OFFSETS REFER TO CENTERLINE OF PROJECT.
5. DISTRICT 6 SURVEYS WILL LAY OUT THE TREE REMOVAL LIMITS. CONTACT BRAD DUZAN AT 217-782-8707 THREE WEEKS PRIOR TO REMOVING THE TREES.
6. THE ILLINOIS DEPARTMENT OF NATURAL RESOURCES HAS ISSUED TREE REMOVAL RESTRICTIONS DUE TO THE FEDERALLY LISTED SPECIES HABITAT (INDIANA GREY BAT) AND HAS RECEIVED CONCURRENCE FROM THE US FISH & WILDLIFE TO IMPLEMENT RESTRICTIONS ON THIS PROJECT. NO TREE SHALL BE REMOVED ON THIS PROJECT FROM APRIL 1ST TO SEPTEMBER 1ST ON ANY GIVEN YEAR.

HIGHWAY STANDARDS

- 000001-06
- 701001-02
- 701006-05
- 701901-03

COMMITMENTS

A COMMITMENT WAS MADE WITH THE MCGEE CREEK LEVEE DRAINAGE DISTRICT THAT 3" OF AGGREGATE SURFACE WOULD BE PLACED ON THE ENTRANCE THAT THE TREE REMOVAL CONTRACTOR USES FOR GAINING ACCESS TO THE MEREDOSIA TERMINAL PROPERTY TO REMOVE THE TREES.

<b>DISTRICT SIX</b>	
EXAMINED <u>7/1</u>	20 <u>14</u>
<i>Mushel Pl</i> for John Wegener	
OPERATIONS ENGINEER	

EXAMINED <u>June 30</u>	20 <u>14</u>
<i>Ron Ouchanbeon</i>	
PROJECT IMPLEMENTATION ENGINEER	

EXAMINED <u>July 3</u>	20 <u>14</u>
<i>Jeff P. Myer</i>	
PROGRAM DEVELOPMENT ENGINEER	

FILE NAME *	USER NAME * coxte	DESIGNED -	REVISED -	<b>STATE OF ILLINOIS DEPARTMENT OF TRANSPORTATION</b>	<b>GENERAL NOTES</b> FAP 745 (IL 104)	F.A. RTE.	SECTION	COUNTY	TOTAL SHEETS	SHEET NO.
ci:\p-work\p-ridot\coxte\d0401567\067242	shs-gennote.dgn	DRAWN -	REVISED -			*VAR	**	*	9	2
Default		CHECKED -	REVISED -			SCALE: _____	SHEET _____ OF _____ SHEETS	STA. _____ TO STA. _____	CONTRACT NO. 72H28	



TREE REMOVAL	20100110	20100210	20100500
	TREE REMOVAL (6 TO 15 UNITS DIAMETER)	TREE REMOVAL (OVER 15 UNITS DIAMETER)	TREE REMOVAL, ACRES
LOCATION	UNIT	UNIT	ACRE
<b>PROPOSED RE-ALIGNED IL 104</b>			
<b>PIKE COUNTY</b>			
STA 52+44.04	14	-	-
STA 52+76.76	-	16	-
STA 35+70.57 TO STA 36+42.77	-	-	0.01
STA 37+05.00 TO STA 39+43.61	-	-	0.11
STA 39+20.32 TO STA 40+42.05	-	-	0.08
STA 61+91.82 TO STA 67+36.86	-	-	1.81
<b>SUB-TOTAL</b>	<b>14</b>	<b>16</b>	<b>2.00</b>
<b>MORGAN COUNTY</b>			
STA 79+31.06	-	26	-
STA 79+60.52	-	26	-
STA 74+88.76 TO STA 78+74.58	-	-	1.19
STA 79+13.27 TO STA 79+66.34	-	-	0.04
STA 79+51.57 TO STA 79+93.72	-	-	0.03
<b>SUB-TOTAL</b>	<b>0</b>	<b>52</b>	<b>1.26</b>
<b>GRAND TOTAL</b>	<b>14</b>	<b>68</b>	<b>3.26</b>

40200800						
AGGREGATE SURFACE COURSE, TYPE B						
LOCATION				THICKNESS INCHES	WIDTH FEET	TON
<b>PIKE COUNTY</b>						
<b>DRAINAGE DISTRICT ENTRANCE</b>						
<b>PROPOSED RE-ALIGNED IL 104</b>						
STA 53+34	TO	STA 61+13		3	12	177

NOTE:  
 TEMPORARY USE PERMITS (TUP) HAVE BEEN ACQUIRED FOR THE SAME AREAS AS THE FUTURE PROPOSED ROW SHOWN FOR THE WEISE FARMS PARCEL AND THE DRAINAGE DISTRICT PARCEL ON THIS SHEET.

TREE REMOVAL, ACRES



LAWRENCE WEISE FARMS, INC. & ILLINOIS CORPORATION & MCGEE CREEK LEVEE AND DRAINAGE DISTRICT

MCGEE CREEK LEVEE AND DRAINAGE DISTRICT

FUTURE PR ROW

FUTURE RE-ALIGNED IL 104

FUTURE PR ROW

35+70.57  
52.77' LT

36+42.77  
47.29' LT

37+61.68  
69.15' LT

39+20.32  
86.96' LT

39+87.29  
86.91' LT

35+79.64  
47.68' LT

37+05.00  
47.10' LT

36+18.34  
42.98' LT

39+43.61  
28.63' LT

39+40.39  
15.83' LT

39+96.00  
35.41' LT

40+42.05  
4.83' LT

39+99.49  
5.28' LT

NOTE:  
 TREE REMOVAL AT THESE TWO PARCELS ONLY (STA 35+70.57 TO STA 40+42.05) SHALL BE CUT AT THE GROUND LINE ONLY DUE TO THE UNDERGROUND GAS PIPE AND NOT REMOVED BELOW THE GROUND LINE LIKE ALL OTHER LOCATIONS. SEE SPECIAL PROVISIONS.

MATCHLINE STA 46+95.00

FILE NAME =	USER NAME = sparksgw	DESIGNED -	REVISED -
ct:\pw\work\p\id\sparksgw\0401567\0672\h28-pln-sh11.dgn		DRAWN -	REVISED -
Default	PLOT SCALE = 80.0000' / in.	CHECKED -	REVISED -
	PLOT DATE = Jul-03-2014 02:18:12PM	DATE -	REVISED -

STATE OF ILLINOIS  
 DEPARTMENT OF TRANSPORTATION

PLAN SHEET  
 FAP 745 (IL 104)

SCALE: 1" = 40'

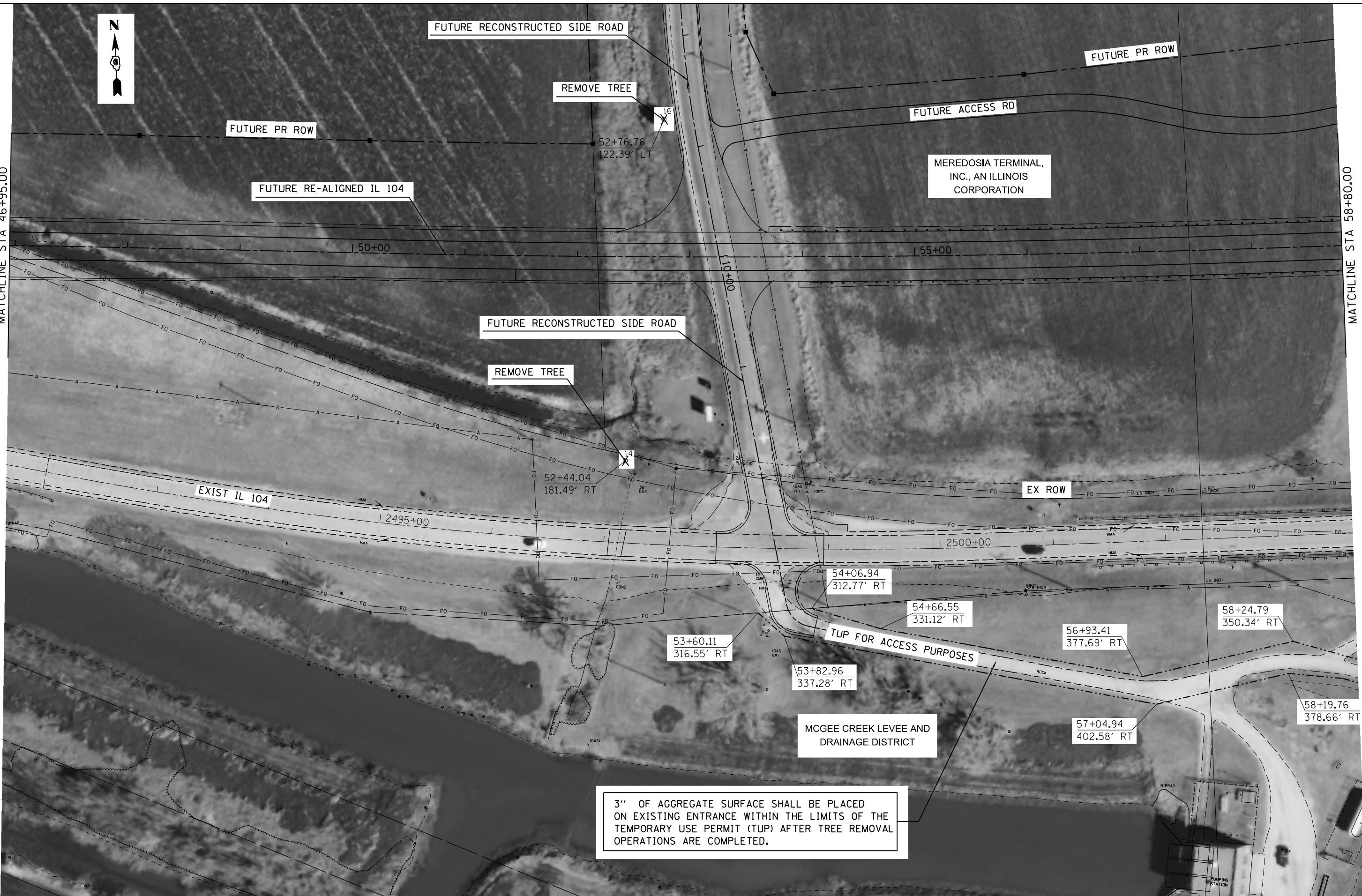
SHEET OF SHEETS STA. TO STA.

F.A. RTE.	SECTION	COUNTY	TOTAL SHEETS	SHEET NO.
•VAR	••	•	9	5
CONTRACT NO. 72H28			ILLINOIS FED. AID PROJECT	



MATCHLINE STA 46+95.00

MATCHLINE STA 58+80.00



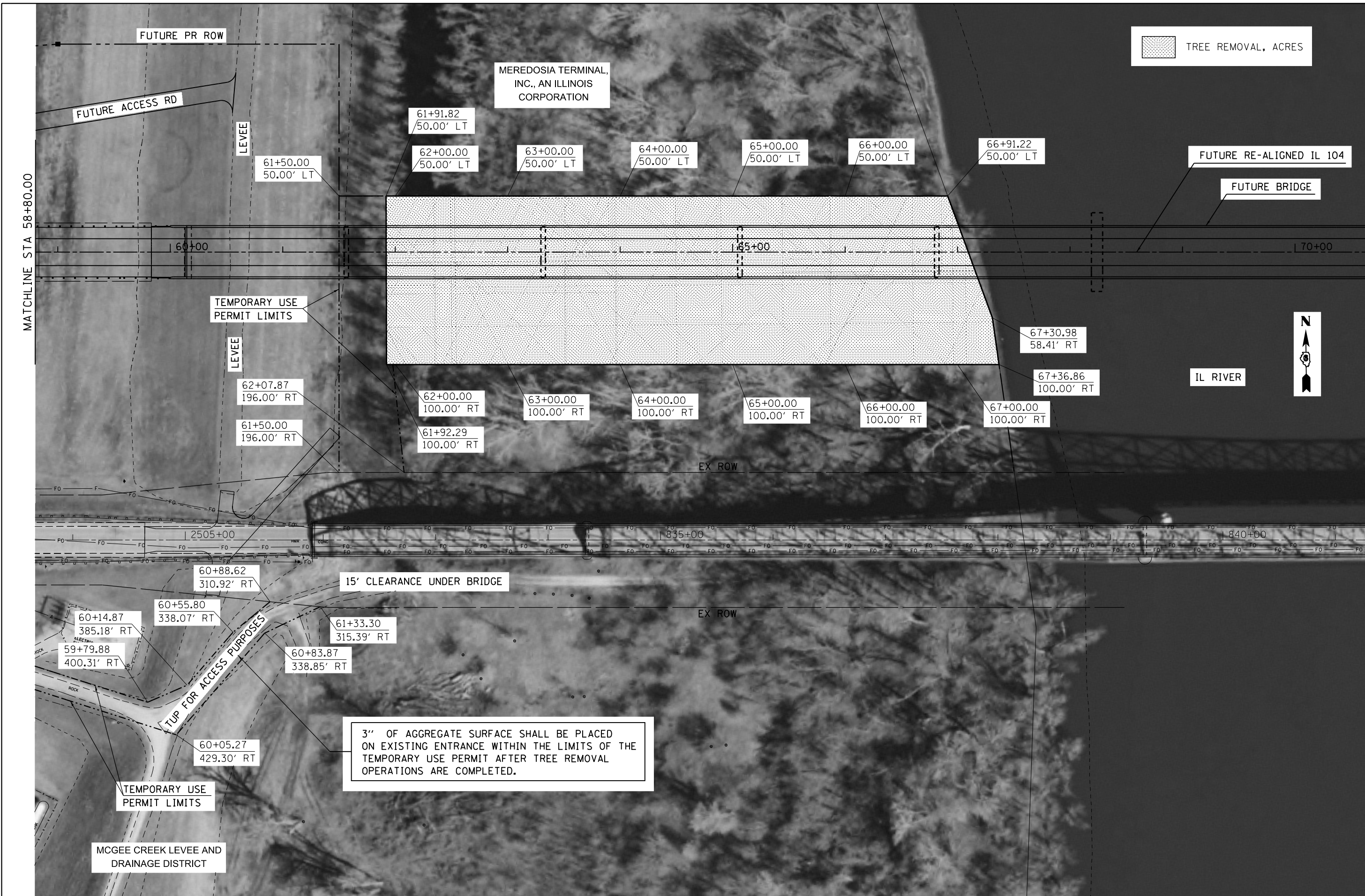
FILE NAME =	USER NAME = sparksgw	DESIGNED -	REVISED -
ct:\pw\work\p\id\sparksgw\0401567\0672\28-pln-sh11.dgn		DRAWN -	REVISED -
Default	PLOT SCALE = 80.0000' / in.	CHECKED -	REVISED -
	PLOT DATE = Jul-03-2014 02:18:19PM	DATE -	REVISED -

**STATE OF ILLINOIS  
DEPARTMENT OF TRANSPORTATION**

**PLAN SHEET  
FAP 745 (IL 104)**

SCALE: 1" = 40'    SHEET    OF    SHEETS    STA.    TO    STA.

F.A. RTE.	SECTION	COUNTY	TOTAL SHEETS	SHEET NO.
+VAR	**	.	9	6
CONTRACT NO. 72H28			ILLINOIS FED. AID PROJECT	



TREE REMOVAL, ACRES



MATCHLINE STA 58+80.00

MATCHLINE STA 70+65.00

FILE NAME =	USER NAME = sparksgw	DESIGNED -	REVISED -
Default	Default	DRAWN -	REVISED -
	PLOT SCALE = 80.0000' / in.	CHECKED -	REVISED -
	PLOT DATE = Jul-03-2014 02:18:26PM	DATE -	REVISED -

**STATE OF ILLINOIS  
DEPARTMENT OF TRANSPORTATION**

**PLAN SHEET  
FAP 745 (IL 104)**

SCALE: 1" = 40'    SHEET    OF    SHEETS    STA.    TO STA.

F.A. RTE.	SECTION	COUNTY	TOTAL SHEETS	SHEET NO.
•VAR	••	•	9	7
			CONTRACT NO. 72H28	
ILLINOIS FED. AID PROJECT				

TREE REMOVAL, ACRES



MATCHLINE STA 70+65.00

FUTURE RE-ALIGNED IL 104

FUTURE BRIDGE

US FISH & WILDLIFE

ISLAND

VILLAGE OF MEREDOSIA, ILLINOIS

TEMPORARY USE PERMIT

TUP FOR ACCESS PURPOSES

LEVEE

LEVEE FRONTAGE RD

PR ROW

PR ROW

FUTURE RE-ALIGNED IL 104

FUTURE BRIDGE

75+00.00  
50.00' LT

76+00.00  
50.00' LT

77+00.00  
50.00' LT

78+00.00  
50.00' LT

78+74.58  
50.00' LT

79+61.31  
50.00' LT

79+93.72  
50.00' LT

74+88.76  
50.00' LT

74+69.56  
100.00' LT

77+00.00  
100.00' LT

78+84.70  
100.00' LT

79+67.30  
100.00' LT

80+00.22  
100.00' LT

80+48.03  
100.00' LT

81+15.05  
355.11' LT

80+70.33  
366.85' LT

IL RIVER

EXIST IL 104

PARCEL 6128124  
THE UNITED STATES  
OF AMERICA

REMOVE TREES

TEMPORARY USE PERMIT

75+11.09  
100.00' RT

76+00.00  
100.00' RT

77+00.00  
100.00' RT

78+00.00  
100.00' RT

78+17.58  
100.00' RT

79+01.45  
106.00' RT

79+63.26  
100.00' RT

80+50.01  
106.00' RT

79+13.27  
100.00' RT

79+66.34  
81.92' RT

79+31.06  
49.10' RT

79+43.75  
72.57' RT

79+51.57  
4.62' LT

79+87.35  
9.00' LT

79+44.08  
30.81' RT

79+42.61  
49.23' RT

79+60.52  
45.80' RT

ILLINOIS RIVER

FLOW

FILE NAME =	USER NAME = sparksgw	DESIGNED -	REVISED -
Default	et:\pw_work\p\dot\sparksgw\0401567\0672\28-pln-sht11.dgn	DRAWN -	REVISED -
	PLOT SCALE = 80.0000' / in.	CHECKED -	REVISED -
	PLOT DATE = Jul-03-2014 02:18:33PM	DATE -	REVISED -

STATE OF ILLINOIS  
DEPARTMENT OF TRANSPORTATION

PLAN SHEET		F.A. RTE.	SECTION	COUNTY	TOTAL SHEETS	SHEET NO.
FAP 745 (IL 104)		•VAR	••	•	9	8
SCALE: 1" = 40'	SHEET	OF	SHEETS	STA.	TO	STA.

ILLINOIS	FED. AID PROJECT	CONTRACT NO. 72H28
----------	------------------	--------------------





FILE NAME =	USER NAME = sparksgw	DESIGNED -	REVISED -
Default	et:\pw\work\p\idot\sparksgw\10401567\0672\28-pln-sht11.dgn	DRAWN -	REVISED -
	PLOT SCALE = 80.0000' / in.	CHECKED -	REVISED -
	PLOT DATE = Jul-03-2014 02:18:41PM	DATE -	REVISED -

**STATE OF ILLINOIS  
DEPARTMENT OF TRANSPORTATION**

**PLAN SHEET  
FAP 745 (IL 104)**

SCALE: 1" = 40'    SHEET    OF    SHEETS    STA.    TO    STA.

F.A. RTE.	SECTION	COUNTY	TOTAL SHEETS	SHEET NO.
•VAR	••	•	9	9
			CONTRACT NO. 72H28	