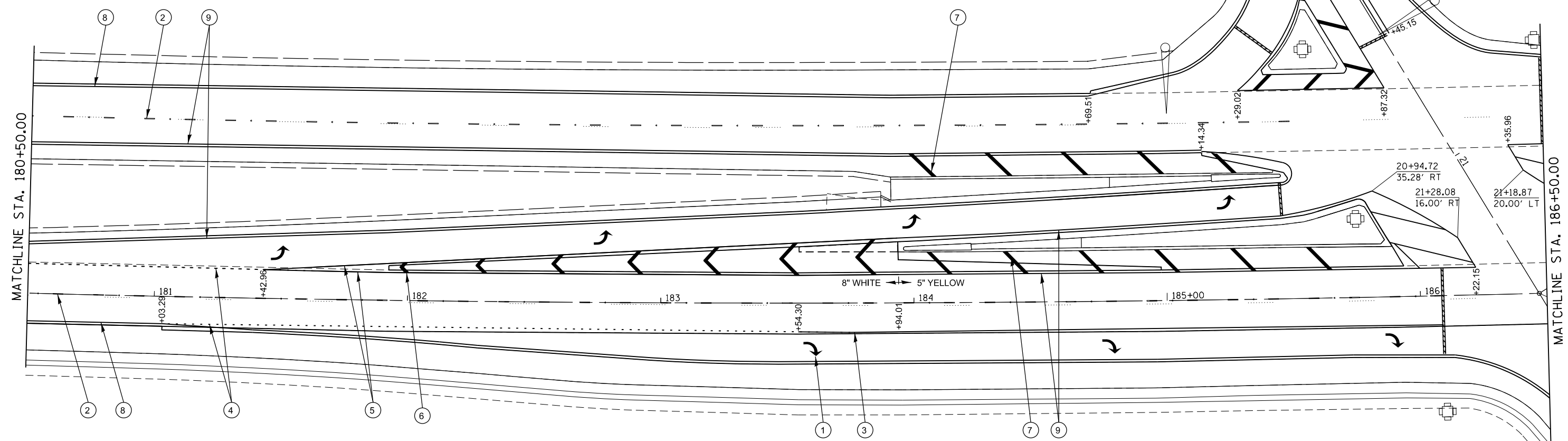


EXIST. CURVE
PI STA. = 183+02.65
R.D. Δ = 15° 47' 02" (LT)



EXIST. CURVE 57
PI STA. = 183+02.65
Δ = 15° 47' 02" (LT)
D = 0° 30' 00"
R = 11,458.84'
T = 1,588.39'
L = 3,156.66'
E = 109.57'
e = 1.56%
T.R. = -----
S.E. RUN = -----
P.C. STA. = 167+14.26
P.T. STA. = 198+70.93

EXIST. CURVE 57
PI STA. = 183+02.65
R.D. Δ = 15° 47' 02" (LT)
D = 0° 30' 00"
R = 11,458.84'
T = 1,588.39'
L = 3,156.66'
E = 109.57'
e = 1.56%
T.R. = -----
S.E. RUN = -----
P.C. STA. = 167+14.26
P.T. STA. = 198+70.93

PI Sta: 183+02.65

LEGEND

- ① PR PREFORMED PLASTIC PAVEMENT MARKING, TYPE B-INLAID-LETTERS & SYMBOLS
- ② PR PREFORMED PLASTIC PAVEMENT MARKING, TYPE B-INLAID-LINE 5" (WHITE SKIP DASH)
- ③ PR PREFORMED PLASTIC PAVEMENT MARKING, TYPE B-INLAID-LINE 6" (SOLID WHITE)
- ④ PR PREFORMED PLASTIC PAVEMENT MARKING, TYPE B-INLAID-LINE 6" (WHITE 2' DASH 6' SKIP)
- ⑤ PR PREFORMED PLASTIC PAVEMENT MARKING, TYPE B-INLAID-LINE 8" (GORE, ISLAND AREAS)
- ⑥ PR PREFORMED PLASTIC PAVEMENT MARKING, TYPE B-INLAID-LINE 12" (GORE, ISLAND AREAS)
- ⑦ PR MODIFIED URETHANE PAVEMENT MARKING LINE 12" (YELLOW)
- ⑧ PR MODIFIED URETHANE PAVEMENT MARKING LINE 5" (WHITE)
- ⑨ PR MODIFIED URETHANE PAVEMENT MARKING LINE 5" (YELLOW)
- ⑩ PR MODIFIED URETHANE PAVEMENT MARKING LINE 5" (YELLOW CENTER LINE)

▬▬▬ PR PREFORMED PLASTIC PAVEMENT MARKING, TYPE B-INLAID-LINE 24"

FILE NAME =	USER NAME = sparksgw	DESIGNED -	REVISED -
ei:\pw\work\p\idot\sparksgw\10330062\06796-sht-pmk.dgn		DRAWN -	REVISED -
Default	PLOT SCALE = 40.0000' / in.	CHECKED -	REVISED -
	PLOT DATE = Jul-14-2014 01:58:47PM	DATE -	REVISED -

**STATE OF ILLINOIS
DEPARTMENT OF TRANSPORTATION**

**PAVEMENT MARKING PLAN SHEETS
FAP 662 (IL 4)**

SCALE: SHEET OF SHEETS STA. TO STA.

F.A.P. RTE.	SECTION	COUNTY	TOTAL SHEETS	SHEET NO.
662	(1-2) RS-1,N	SANGAMON	89	53
CONTRACT NO. 72F96			ILLINOIS FED. AID PROJECT	