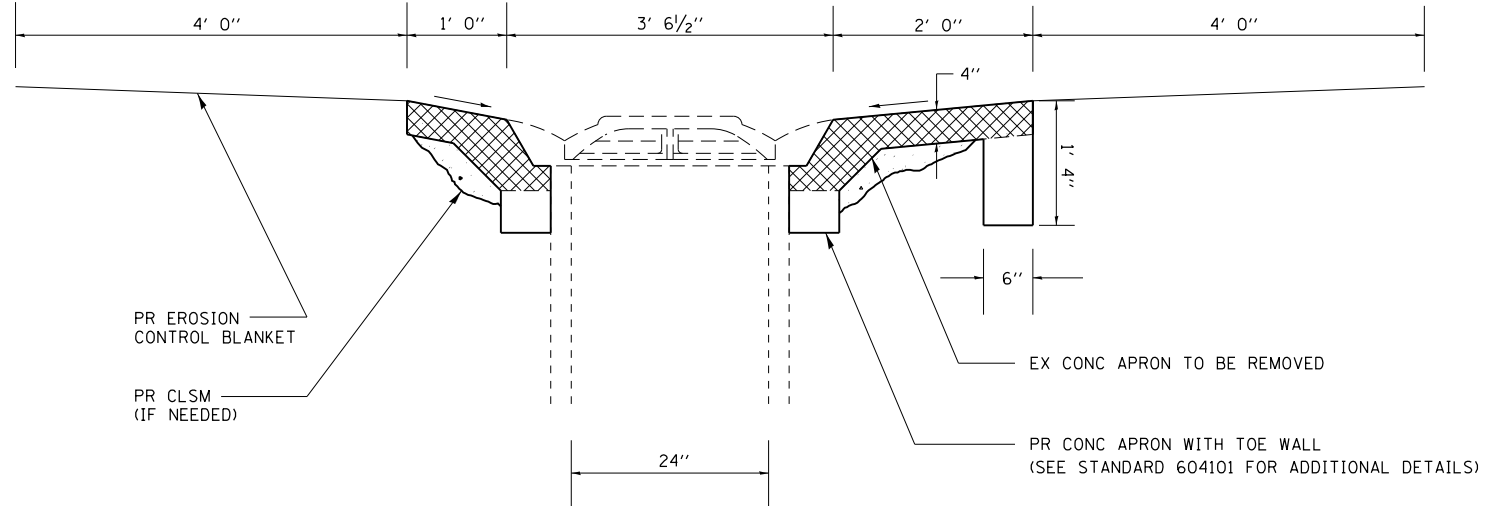
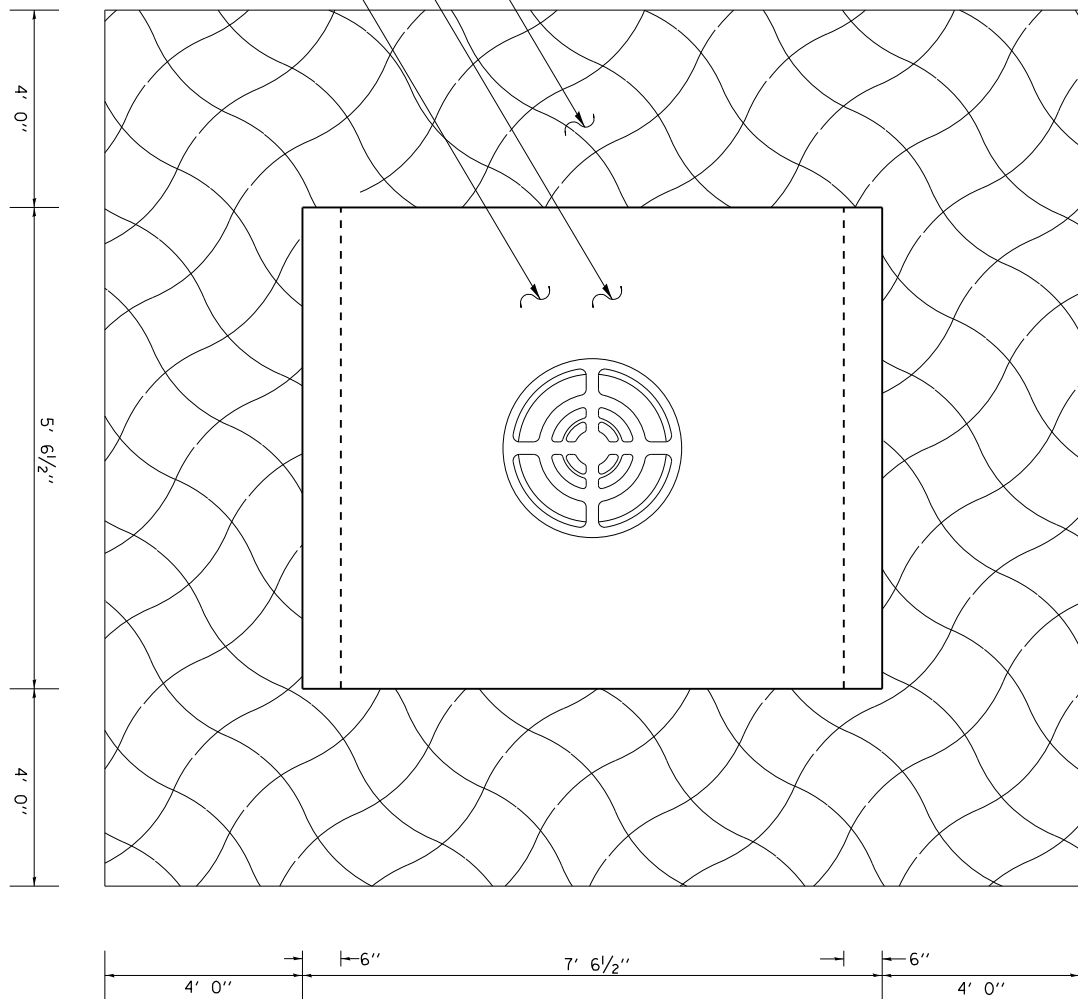


PR EROSION CONTROL BLANKET
 PR CONC APRON
 EX CONC APRON



SECTION A-A

REPAIRS TO INLET STANDARD 2250		FOR INFORMATION ONLY (NOT TO BE PAID SEPARATELY)	
LOCATION	INLET TO BE RECONSTRUCTED (EACH)	EROSION CONTROL BLANKET (SQ YD)	CONTROLLED LOW STRENGTH MATERIAL (CU YD)
MED STA 787+00	1	18.7	1.5
NB STA 789+74	1	18.7	1.5
MED STA 311+00	1	18.7	1.5
TOTAL	3	56.1	4.5

NOTES:

1. SEE SEEDING SCHEDULE FOR SEEDING QUANTITIES.
2. SEE STANDARD 604101 FOR ADDITIONAL DETAILS NOT SHOWN. THE TOE WALL AT THE LONG END OF THE APRON IS IN ADDITION TO WHAT IS SHOWN IN STANDARD 604101.
3. CONTROLLED LOW STRENGTH MATERIAL TO BE USED IF DEEMED NECESSARY BY THE ENGINEER, THE QUANTITY IN THE ABOVE SCHEDULE IS ESTIMATED.