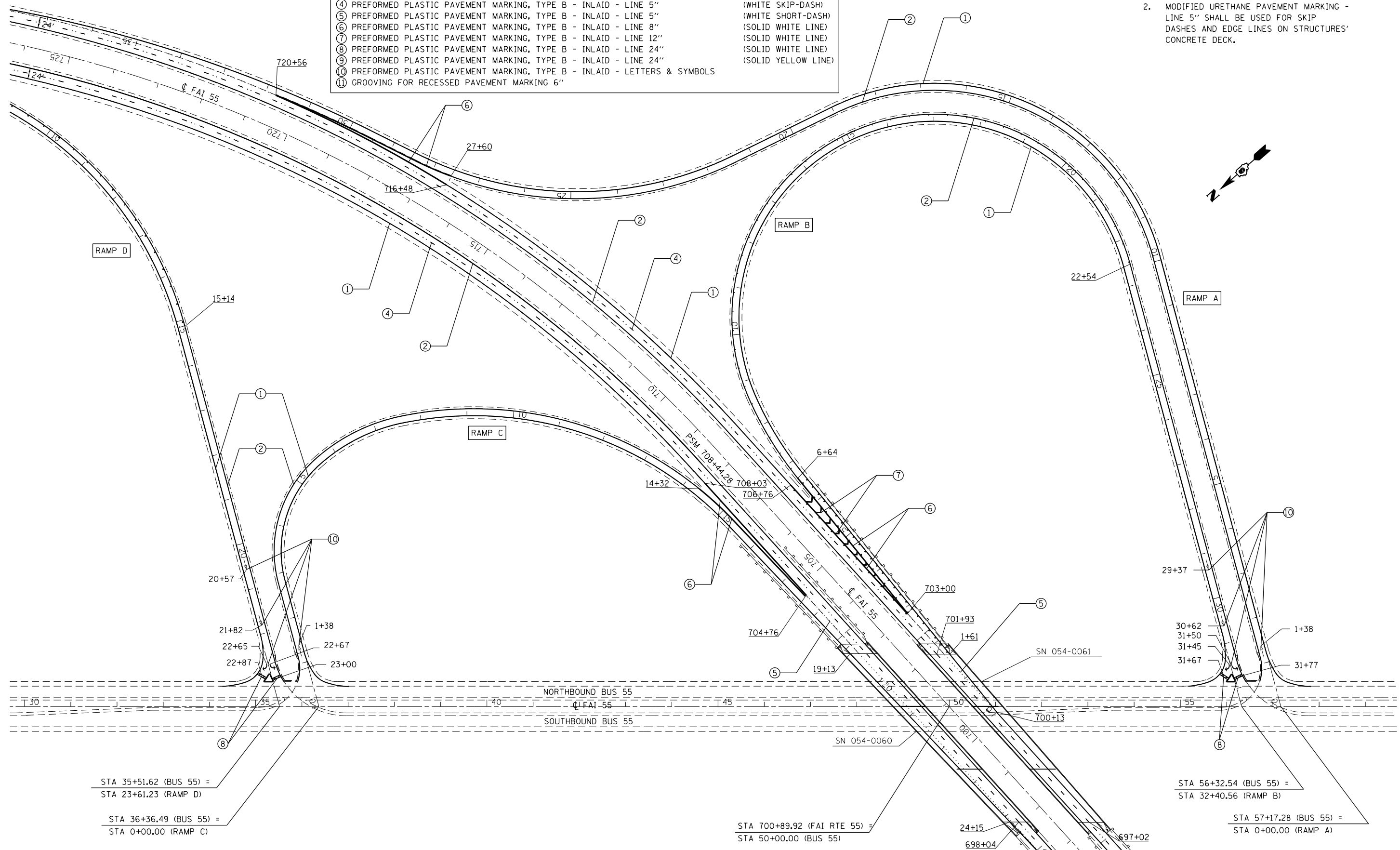


PAVEMENT MARKING LEGEND

- | | |
|---|---------------------|
| ① MODIFIED URETHANE PAVEMENT MARKING - LINE 5" | (SOLID WHITE LINE) |
| ② MODIFIED URETHANE PAVEMENT MARKING - LINE 5" | (SOLID YELLOW LINE) |
| ③ MODIFIED URETHANE PAVEMENT MARKING - LINE 5" | (WHITE SKIP-DASH) |
| ④ PREFORMED PLASTIC PAVEMENT MARKING, TYPE B - INLAID - LINE 5" | (WHITE SKIP-DASH) |
| ⑤ PREFORMED PLASTIC PAVEMENT MARKING, TYPE B - INLAID - LINE 5" | (WHITE SHORT-DASH) |
| ⑥ PREFORMED PLASTIC PAVEMENT MARKING, TYPE B - INLAID - LINE 8" | (SOLID WHITE LINE) |
| ⑦ PREFORMED PLASTIC PAVEMENT MARKING, TYPE B - INLAID - LINE 12" | (SOLID WHITE LINE) |
| ⑧ PREFORMED PLASTIC PAVEMENT MARKING, TYPE B - INLAID - LINE 24" | (SOLID WHITE LINE) |
| ⑨ PREFORMED PLASTIC PAVEMENT MARKING, TYPE B - INLAID - LINE 24" | (SOLID WHITE LINE) |
| ⑩ PREFORMED PLASTIC PAVEMENT MARKING, TYPE B - INLAID - LINE 24" | (SOLID WHITE LINE) |
| ⑪ PREFORMED PLASTIC PAVEMENT MARKING, TYPE B - INLAID - LETTERS & SYMBOLS | (SOLID YELLOW LINE) |
| ⑫ GROOVING FOR RECESSED PAVEMENT MARKING 6" | |

NOTE:

- GROOVING SHALL NOT BE ALLOWED ON STRUCTURES' CONCRETE DECK.
- MODIFIED URETHANE PAVEMENT MARKING - LINE 5" SHALL BE USED FOR SKIP DASHES AND EDGE LINES ON STRUCTURES' CONCRETE DECK.



STA 35+51.62 (BUS 55) =
STA 23+61.23 (RAMP D)

STA 36+36.49 (BUS 55) =
STA 0+00.00 (RAMP C)

STA 700+89.92 (FAI RTE 55) =
STA 50+00.00 (BUS 55)

STA 56+32.54 (BUS 55) =
STA 32+40.56 (RAMP B)

STA 57+17.28 (BUS 55) =
STA 0+00.00 (RAMP A)

FILE NAME =	USER NAME = sparksgw	DESIGNED -	REVISED -
ct:\pw\work\p\id\sparksgw\0215133\0672041-sht-pavemarking-4.dgn		DRAWN -	REVISED -
Default	PLOT SCALE = 200.0000' / in.	CHECKED -	REVISED -
	PLOT DATE = Jul-14-2014 03:37:51PM	DATE -	REVISED -

STATE OF ILLINOIS
DEPARTMENT OF TRANSPORTATION

F.A.I. ROUTE 55 (BUSINESS 55 INTERCHANGE)
PAVEMENT MARKING PLAN SHEET

SCALE: 1" = 100'

SHEET 17 OF SHEETS STA. TO STA.

F.A.I. RTE.	SECTION	COUNTY	TOTAL SHEETS	SHEET NO.
.	..	LOGAN	108	86
CONTRACT NO. 72D41			ILLINOIS FED. AID PROJECT	