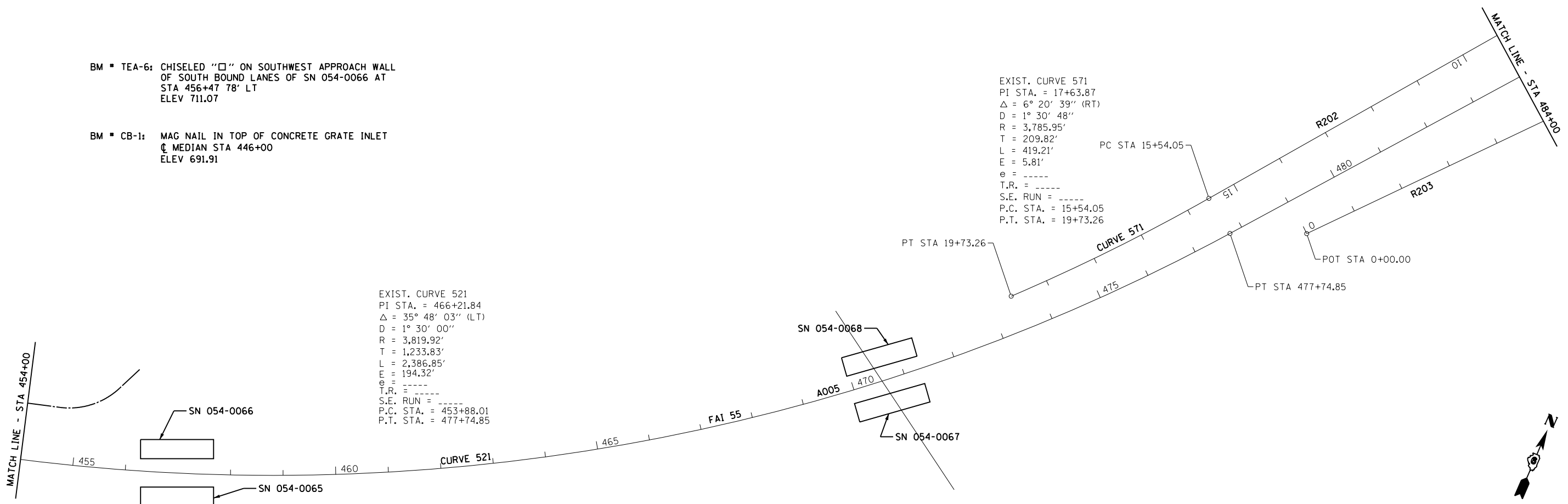


BM ■ TEA-6: CHISELED "□" ON SOUTHWEST APPROACH WALL OF SOUTH BOUND LANES OF SN 054-0066 AT STA 456+47 78' LT ELEV 711.07

BM ■ CB-1: MAG NAIL IN TOP OF CONCRETE GRATE INLET @ MEDIAN STA 446+00 ELEV 691.91

EXIST. CURVE 571
 PI STA. = 17+63.87
 Δ = 6° 20' 39" (RT)
 D = 1° 30' 48"
 R = 3,785.95'
 T = 209.82'
 L = 419.21'
 E = 5.81'
 e = -----
 T.R. = -----
 S.E. RUN = -----
 P.C. STA. = 15+54.05
 P.T. STA. = 19+73.26

EXIST. CURVE 521
 PI STA. = 466+21.84
 Δ = 35° 48' 03" (LT)
 D = 1° 30' 00"
 R = 3,819.92'
 T = 1,233.83'
 L = 2,386.85'
 E = 194.32'
 e = -----
 T.R. = -----
 S.E. RUN = -----
 P.C. STA. = 453+88.01
 P.T. STA. = 477+74.85



FILE NAME =	USER NAME = sparksgw	DESIGNED -	REVISED -
c:\pwwork\pwwork\sparksgw\d0215133\06xxxx-shit-plan&profile.dgn		DRAWN - DMS	REVISED -
Default	PLOT SCALE = 200.0000' / in.	CHECKED -	REVISED -
	PLOT DATE = Jul-14-2014 03:37:10PM	DATE -	REVISED -

**STATE OF ILLINOIS
 DEPARTMENT OF TRANSPORTATION**

ALIGNMENT, CROSS TIES & BENCHMARKS			
SCALE:	SHEET 15 OF SHEETS	STA.	TO STA.

F.A.I. RTE.	SECTION	COUNTY	TOTAL SHEETS	SHEET NO.
.	..	LOGAN	108	49
ILLINOIS FED. AID PROJECT			CONTRACT NO. 72D41	