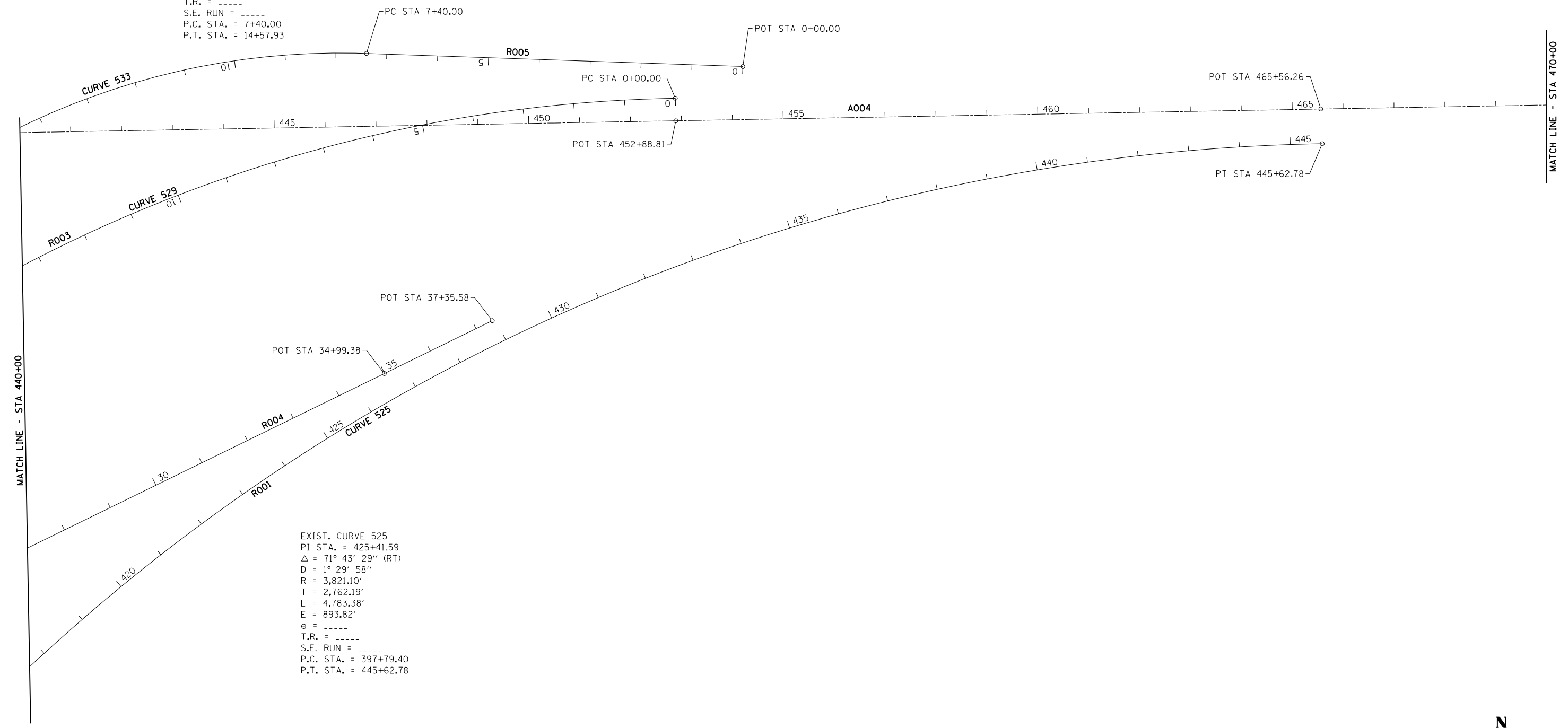


EXIST. CURVE 533
 PI STA. = 11+06.65
 Δ = 28° 40' 39" (LT)
 D = 3° 59' 40"
 R = 1,434.37'
 T = 366.65'
 L = 717.93'
 E = 46.12'
 e = -----
 T.R. = -----
 S.E. RUN = -----
 P.C. STA. = 7+40.00
 P.T. STA. = 14+57.93

EXIST. CURVE 525
 PI STA. = 425+41.59
 Δ = 71° 43' 29" (RT)
 D = 1° 29' 58"
 R = 3,821.10'
 T = 2,762.19'
 L = 4,783.38'
 E = 893.82'
 e = -----
 T.R. = -----
 S.E. RUN = -----
 P.C. STA. = 397+79.40
 P.T. STA. = 445+62.78



FILE NAME =	USER NAME = sparksgw	DESIGNED -	REVISED -	STATE OF ILLINOIS DEPARTMENT OF TRANSPORTATION	ALIGNMENT, CROSS TIES & BENCHMARKS			F.A.I. RTE.	SECTION	COUNTY	TOTAL SHEETS	SHEET NO.	
Default	Plot SCALE = 200.0000' / in.	CHECKED -	REVISED -										
	PLOT DATE = Jul-14-2014 03:37:07PM	DATE -	REVISED -		SCALE:	SHEET 3	OF	SHEETS	STA.	TO	STA.	ILLINOIS FED. AID PROJECT	CONTRACT NO. 72D41