

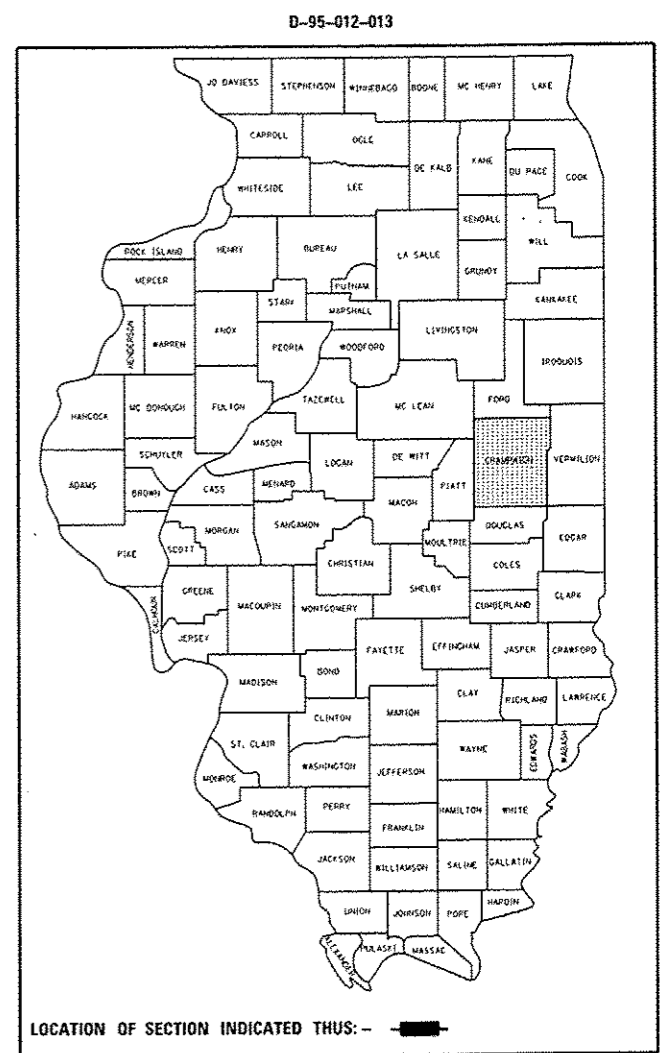
F.A.P. RTE.	SECTION	COUNTY	TOTAL SHEETS	SHEET NO.
VAR.	FY2014 ITS-1	CHAMPAIGN	71	1
		ILLINOIS	CONTRACT NO. 70A26	

STATE OF ILLINOIS
DEPARTMENT OF TRANSPORTATION
DIVISION OF HIGHWAYS

**PROPOSED
HIGHWAY PLANS**

VARIOUS ROUTES
SECTION FY2014 ITS-1
CHANGEABLE MESSAGE SIGNS SURVEILLANCE
CHAMPAIGN COUNTY
PROJECT: ACHSIP-000S (999)
C-95-012-13

FOR INDEX OF SHEETS, SEE SHEET NO. 2
FOR SUMMARY OF QUANTITIES, SEE SHEET NO. 3-7

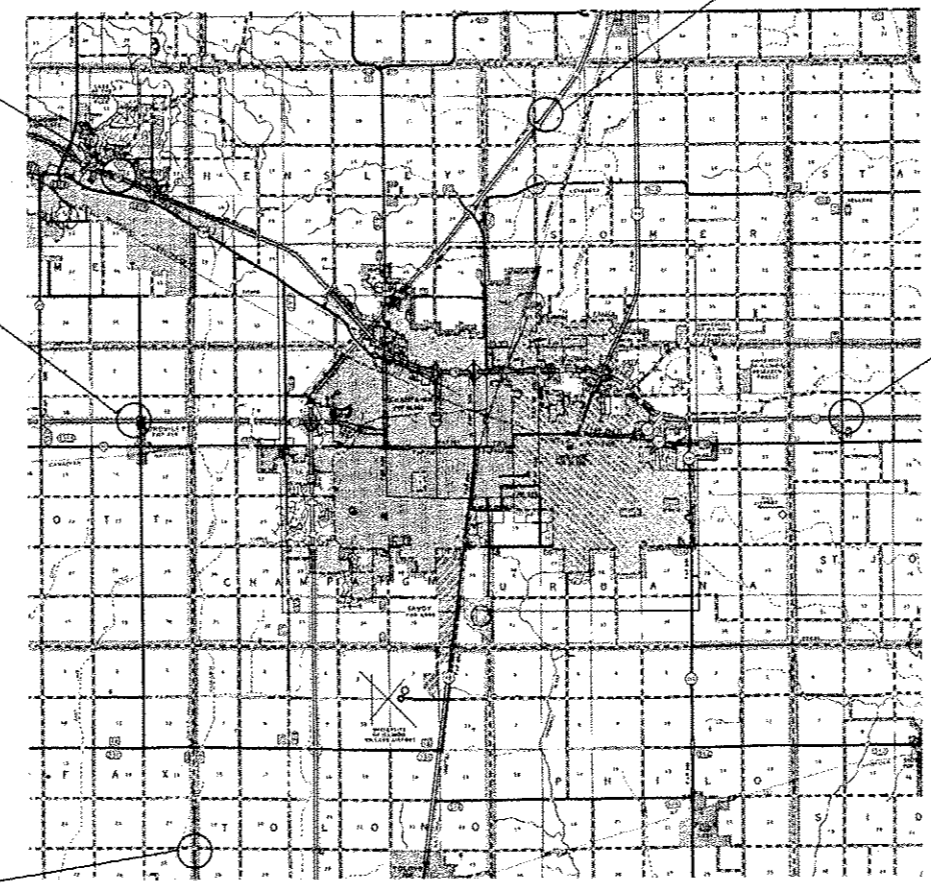


I-74 EASTBOUND
STA. 1572+00 MM 172.83
STR. NO. 5 S 010 0174 R172.83

I-57 SOUTHBOUND
STA. 890+96 MM 242.78
STR. NO. 5 S 010 1057 L242.78

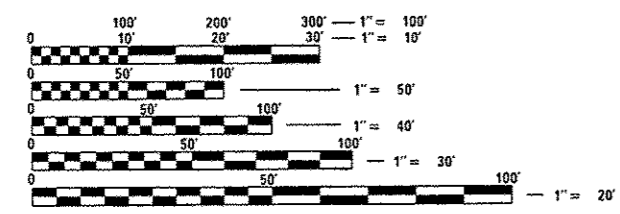
I-72 EASTBOUND
STA. 1778+15 MM 178.29
STR. NO. 5 S 010 1072 R178.29

I-74 WESTBOUND
STA. 593+12 MM 189.05
STR. NO. 5 S 010 1074L189.05



I-57 NORTHBOUND
STA. 475+50 MM226.45
STR. NO. 5 S 010 R226.45

CHAMPAIGN COUNTY



FULL SIZE PLANS HAVE BEEN PREPARED USING STANDARD ENGINEERING SCALES. REDUCED SIZED PLANS WILL NOT CONFORM TO STANDARD SCALES. IN MAKING MEASUREMENTS ON REDUCED PLANS, THE ABOVE SCALES MAY BE USED.

J.U.L.I.E.
JOINT UTILITY LOCATION INFORMATION FOR EXCAVATION
1-800-892-0123
OR 811

PROJECT ENGINEER JEFF ALLEN
DESIGNED BY: ROGER BIGGS
PHONE NUMBER: (217) 465-4181
CONTRACT NO. 70A26

STATE OF ILLINOIS
DEPARTMENT OF TRANSPORTATION
DIVISION OF HIGHWAYS

SUBMITTED JUNE 26 20 14
Kensil A. Garnett
DEPUTY DIRECTOR OF HIGHWAYS, REGION ENGINEER

AUG 15 20 14
John D. Baranzoli, P.E.
ENGINEER OF DESIGN AND ENVIRONMENT

AUG 15 20 14
Omer Osman, P.E.
DIRECTOR OF HIGHWAYS, CHIEF ENGINEER

PRINTED BY THE AUTHORITY
OF THE STATE OF ILLINOIS