

F.A.P. RTE.	SECTION	COUNTY	TOTAL SHEETS	SHEET NO.
343	631RS-4	KANE	24	1
		ILLINOIS	CONTRACT NO. 60Y61	

STATE OF ILLINOIS
DEPARTMENT OF TRANSPORTATION
DIVISION OF HIGHWAYS

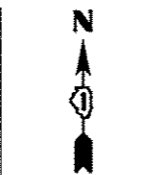
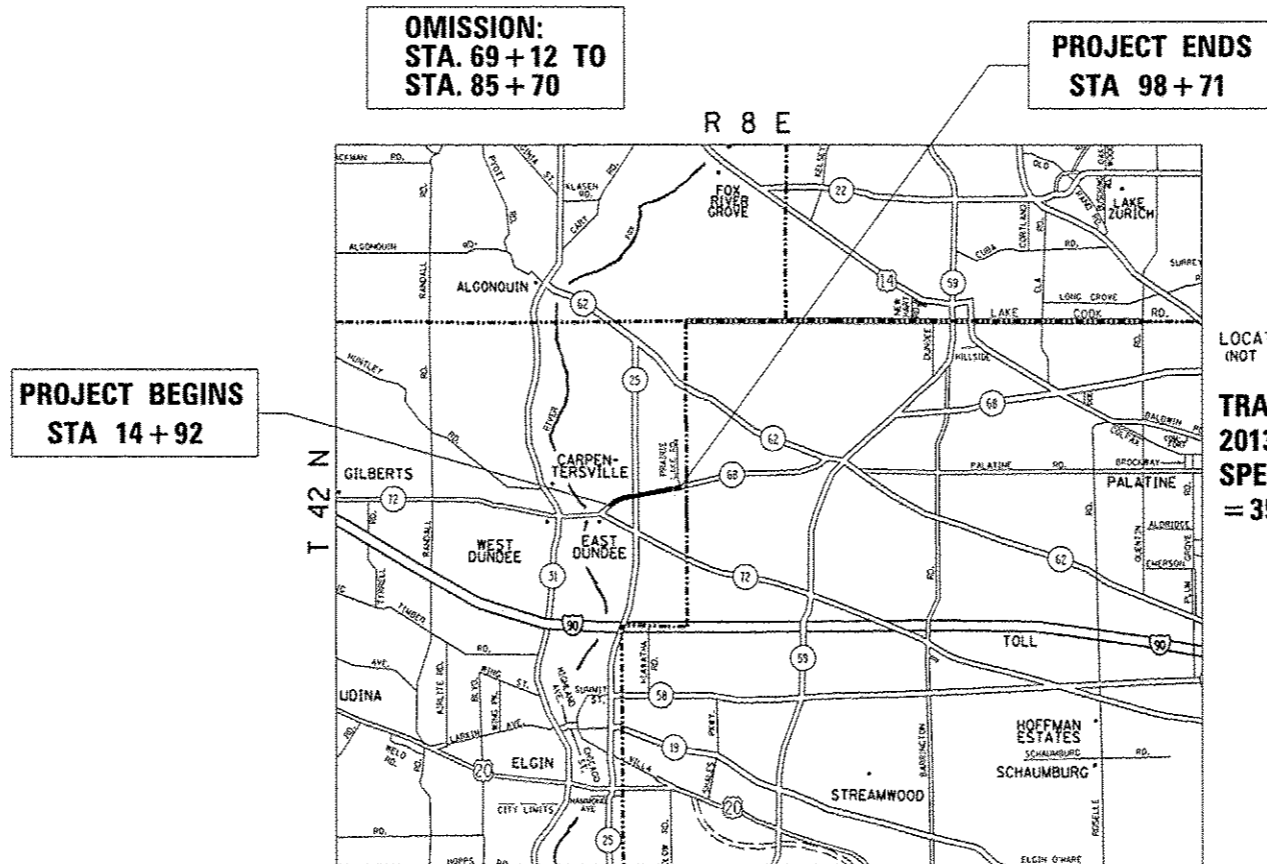
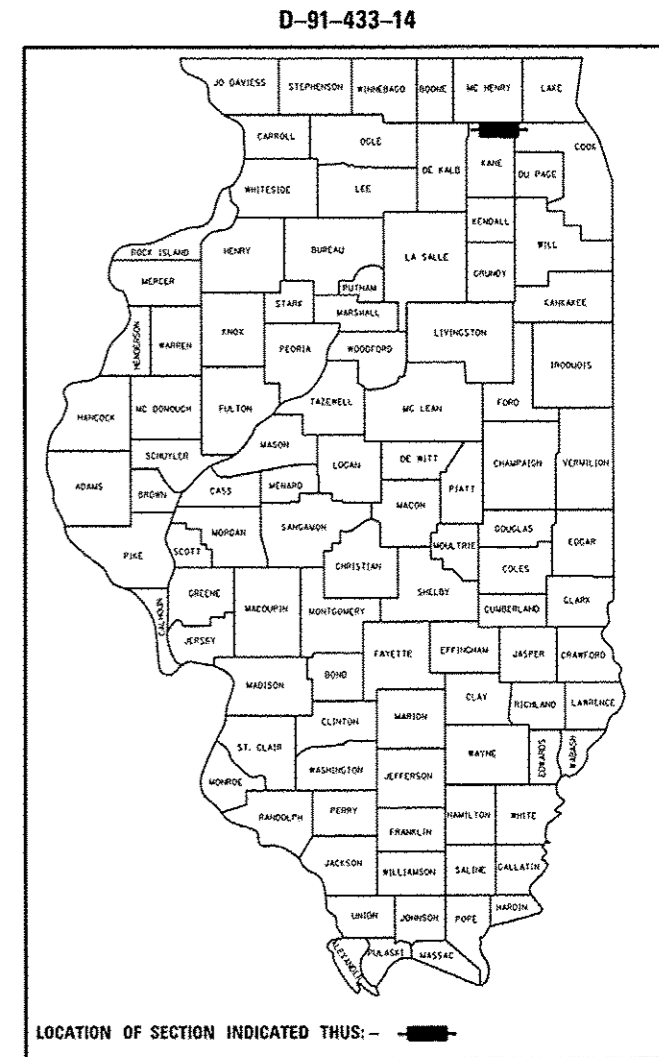
**PROPOSED
HIGHWAY PLANS**

F.A.P. ROUTE 343 : IL ROUTE 68 (DUNDEE ROAD)
IL 72 (MAIN STREET) TO PRAIRIE LAKE ROAD
SECTION 631RS-4
RESURFACING (3P)
KANE COUNTY

C-91-433-14

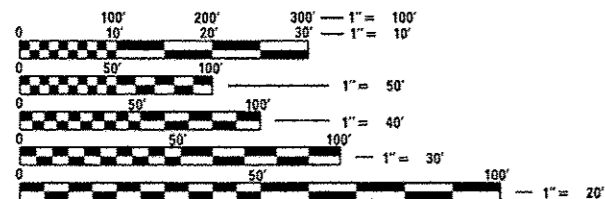
FOR INDEX OF SHEETS, SEE SHEET NO. 2

THIS PROJECT IS LOCATED IN:
THE VILLAGE OF CARPENTERSVILLE
AND THE VILLAGE OF EAST DUNDEE



LOCATION MAP
(NOT TO SCALE)

TRAFFIC DATA:
2013 ADT = 16,400
SPEED LIMIT
= 35 TO 45 MPH



FULL SIZE PLANS HAVE BEEN PREPARED USING STANDARD ENGINEERING SCALES. REDUCED SIZED PLANS WILL NOT CONFORM TO STANDARD SCALES. IN MAKING MEASUREMENTS ON REDUCED PLANS, THE ABOVE SCALES MAY BE USED.

J.U.L.I.E.
JOINT UTILITY LOCATION INFORMATION FOR EXCAVATION
1-800-892-0123
OR 811

PROJECT ENGINEER: DAN WILGREEN / (847) 705-4240
PROJECT MANAGER: KEN ENG / (847) 705-4247

DUNDEE TOWNSHIP
GROSS LENGTH OF PROJECT = 8,379 FT = 1.587 MILES
NET LENGTH OF PROJECT = 6,721 FT = 1.273 MILES

CONTRACT NO. 60Y61

STATE OF ILLINOIS
DEPARTMENT OF TRANSPORTATION
DIVISION OF HIGHWAYS

SUBMITTED July 8 2014
John F. [Signature]
DEPUTY DIRECTOR OF HIGHWAYS, REGION ENGINEER

Aug 15 2014
John D. Baramzelli PE. [Signature]
ENGINEER OF DESIGN AND ENVIRONMENT

Aug 15 2014
Omor Osman PE. [Signature]
DIRECTOR OF HIGHWAYS, CHIEF ENGINEER

PRINTED BY THE AUTHORITY
OF THE STATE OF ILLINOIS