

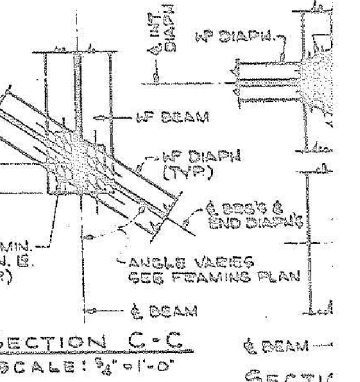
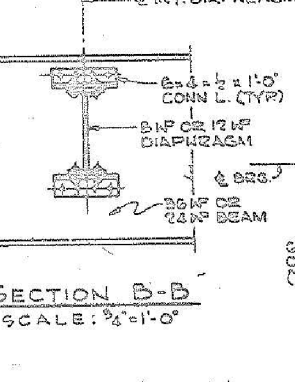
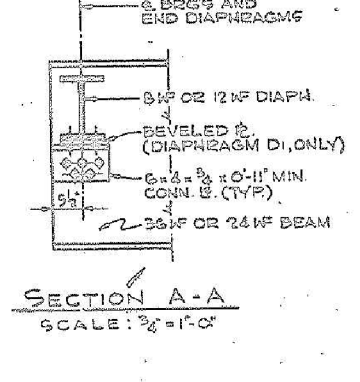
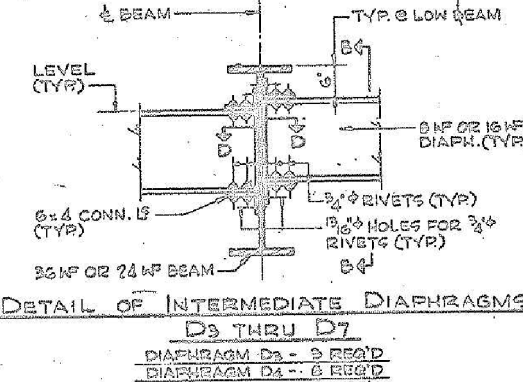
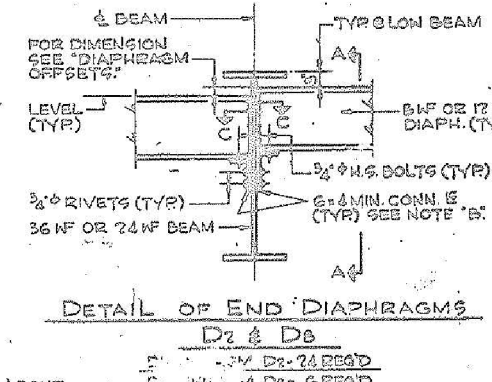
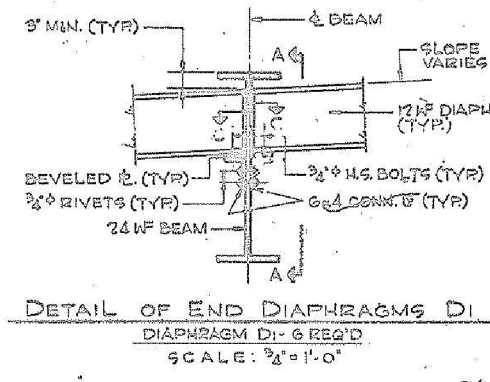
NOTE 'A':
DIAPHRAGMS D1 & D2 - 12 WF 40
DIAPHRAGMS D3 & D7 - 8 WF 28
DIAPHRAGMS D4, D5 & D6 - 16 WF 36
DIAPHRAGMS D8 - 8 WF 40

NOTE 'B':
ALL DIAPHRAGMS BETWEEN ADJACENT BEAMS SHALL BE MADE LEVEL BY VARYING THE GAUGE AND/OR SIZE OF THE CONNECTION ANGLES AS REQUIRED.

COVER PLATE SCHEDULE

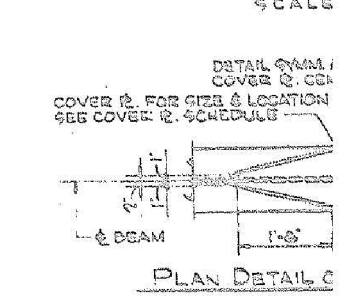
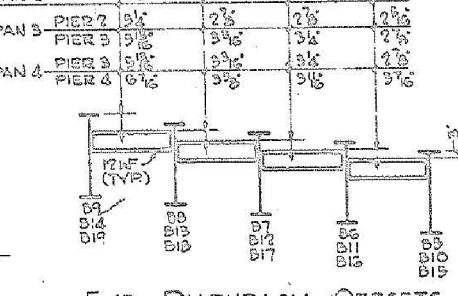
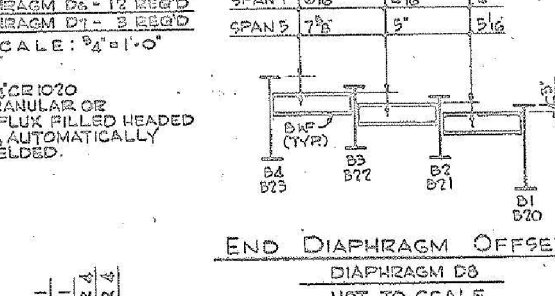
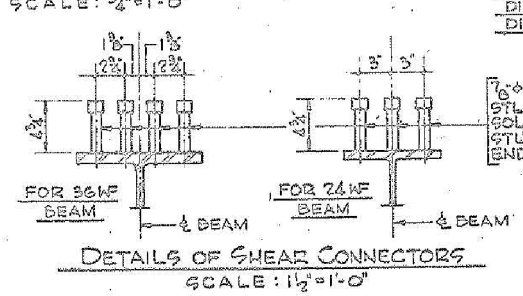
SPAN	BEAM	COVER PLATE
1	D2 & D3	7/16" x 20'-0"
3	D10 THRU D14	13/16" x 18'-0"
4	D19 THRU D19	13/16" x 18'-0"
5	D21 & D22	7/16" x 20'-0"

& SEE COVER PLATE DETAIL



SHEAR CONNECTOR SPACING
NOT TO SCALE

BEAM	SPACING
BM. D2 & D3	19SPR5" 7'-11"
BM. D6, D7 & D8	17SPR1'-0" 17'-0"
BM. D10 THRU D14	12SPR1'-0" 20'-0"
BM. D19 & D19	19SPR5" 7'-11"

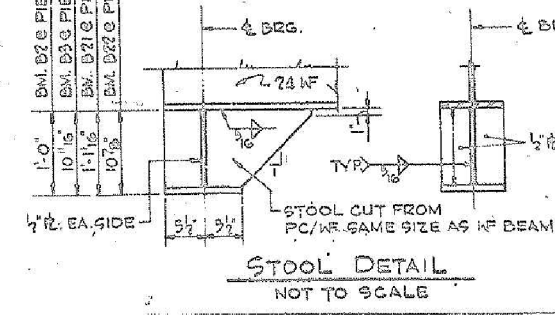


CAMBER NOTE:
BM. D10 & D14 - 3/4" CAMBER
BM. D11, D12, D13, D16, D17 & D18 - 2 1/2" CAMBER
BM. D19 & D19 - 4" CAMBER
TOLERANCE = 0" UNDER AND 1/2" OVER.

TOP/WF ELEVATIONS

LOCATION	W. ABUT. & DRG.	PIER 1	PIER 2	PIER 3	PIER 4	E. ABUT. & DRG.
D1, D5, D10, D19, D20	2.124	2.654	2.771	3.516	3.367	3.267
D6, D11, D16	—	2.959	3.505	3.558	3.504	3.494
D2, D21	2.456	2.988	—	—	—	2.675
D7, D12, D17	—	3.231	3.776	3.796	3.773	3.764
D3, D22	2.866	3.396	—	—	—	3.092
D8, D15, D18	—	3.480	4.025	4.034	4.041	4.032
D4, D9, D14, D19, D23	3.186	3.716	3.667	4.213	4.223	4.274

*** ADD 0.200 TO ALL TOP/WF ELEVATIONS GIVEN. SEE CAMBER NOTE.



BILL OF MATERIAL

ITEM	UNIT	QUANTITY
FURNISHING AND ERECTING STRUCTURAL STEEL	POUND	263,793

* INCLUDES ALL STRUCTURAL STEEL SHOWN ON THIS SHEET.

ILLINOIS DIVISION OF
SOUTHWEST EXP
RAMP E
SOUTHWEST EX
FRAMING PLAN AND

benesch
engineers - scientists - planners
Alfred Benesch & Company
205 North Michigan Avenue, Suite 2400
Chicago, Illinois 60601
312-565-0450 Job No. 10093

FILE NAME =	USER NAME = ksnyder	DESIGNED - DMS	REVISD -
0161512.60W77.050_Existing Plans.7.dgn		CHECKED - JHG	REVISD -
		DRAWN - KMS	REVISD -
		CHECKED - JHG	REVISD -

STATE OF ILLINOIS
DEPARTMENT OF TRANSPORTATION

EXISTING PLANS (7 OF 7)
STRUCTURE NO. 016-1512
SHEET NO. SBX7 OF SBX7 SHEETS

F.A.P. RTE.	SECTION	COUNTY	TOTAL SHEETS	SHEET NO.
373	(0707-608&611)HB-B	COOK	177	166
CONTRACT NO. 60W77			ILLINOIS FED. AID PROJECT	

X:\100000\10093\Eng-Docs\Phase_II\SN-016-1512-SB-1st_Ave.-to-NB-155-over_155\Final\0161512-60W77-050_Existing Plans.7.dgn 10:43:25 AM 6/23/2014