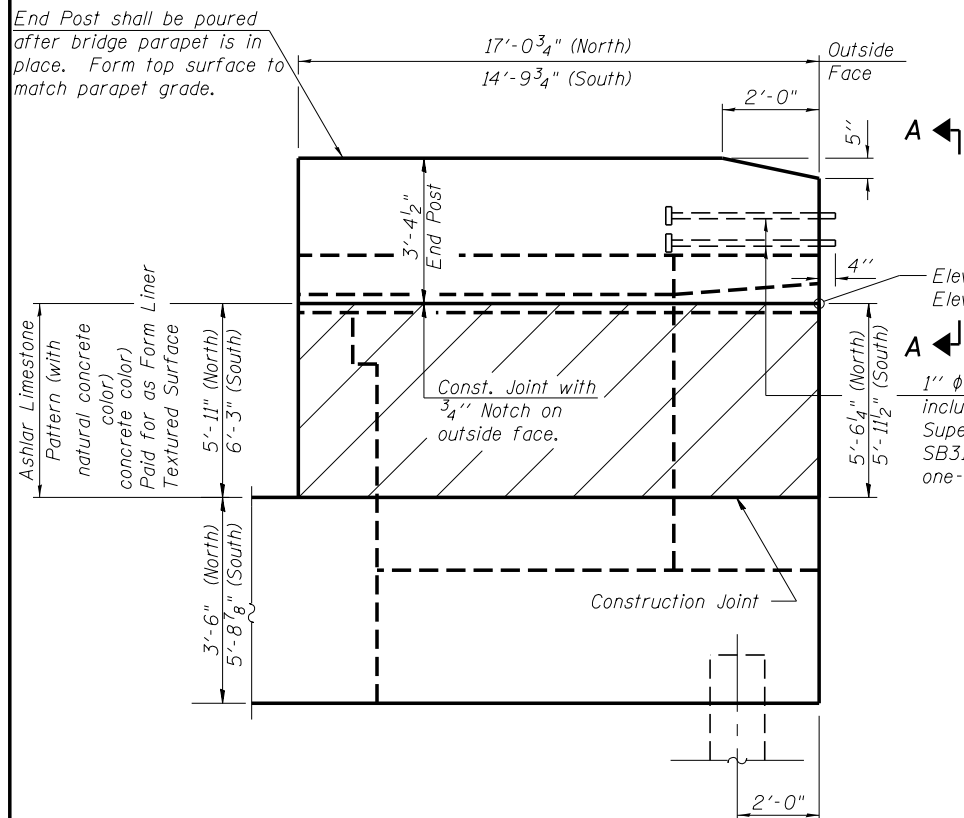
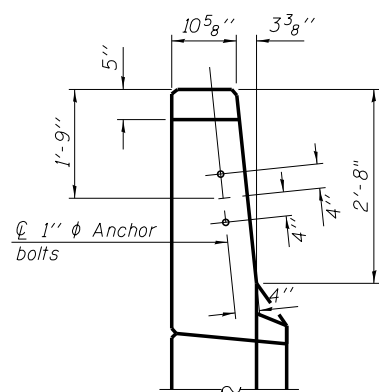


End Post shall be poured after bridge parapet is in place. Form top surface to match parapet grade.

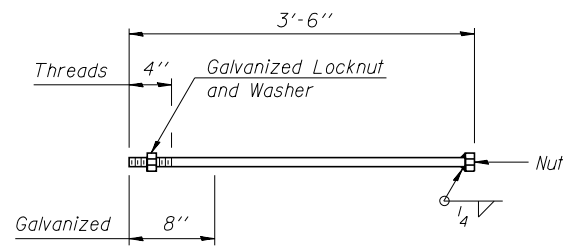
Ashtar Limestone Pattern (with natural concrete color) Paid for as Form Liner Textured Surface



WING WALL ELEVATION
Showing Dimensions

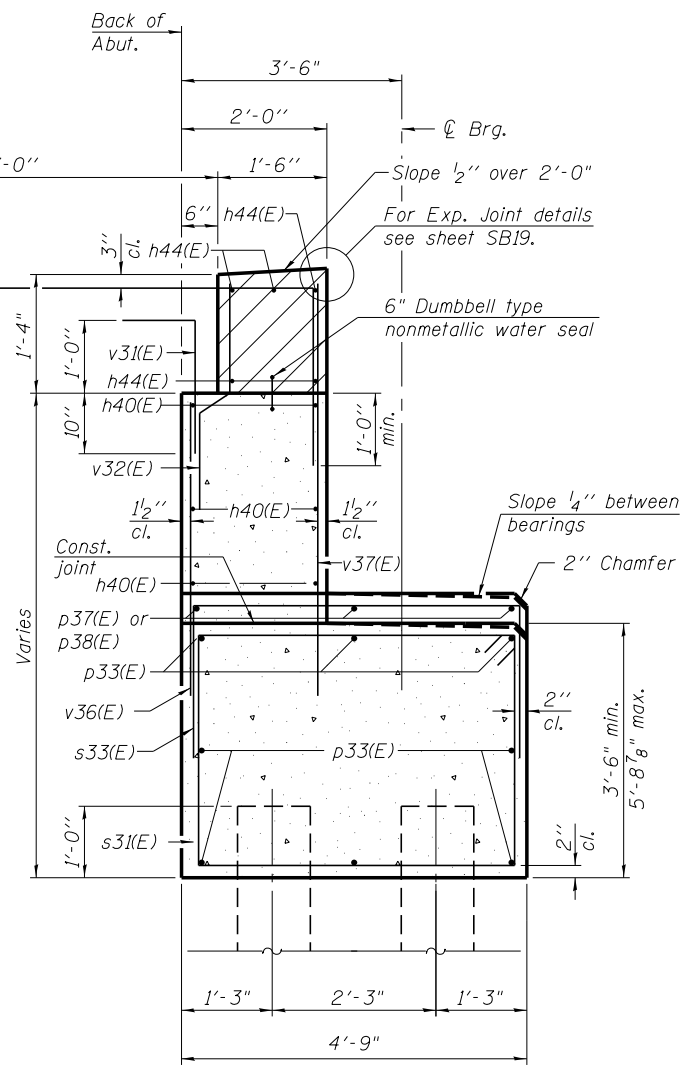


VIEW A-A

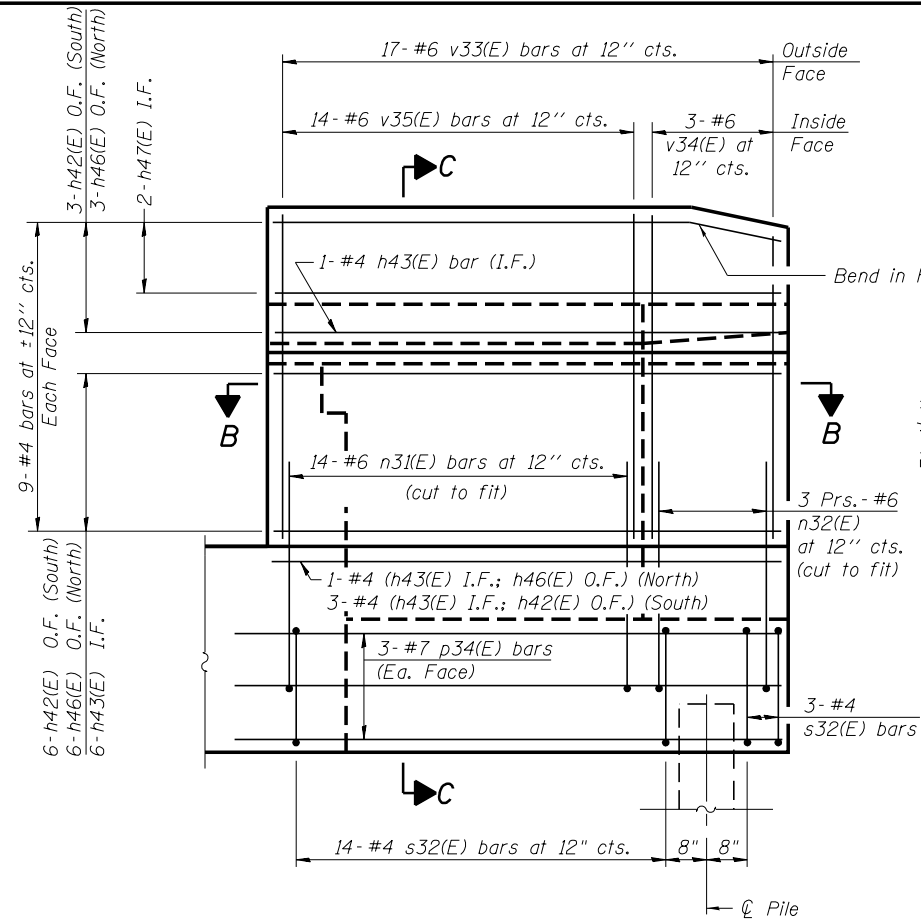


1" Ø ANCHOR BOLT

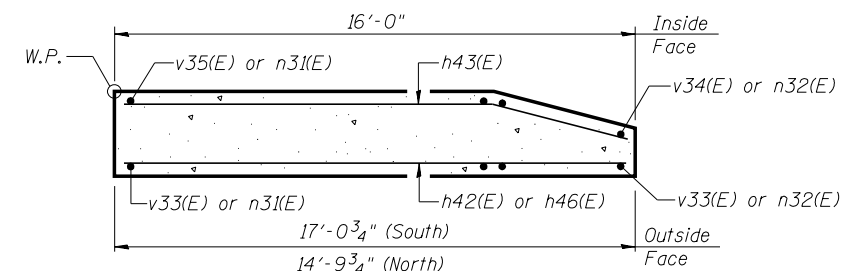
1" Ø Anchor Bolts. Cost included with Concrete Superstructure on sheet SB31. At exit end one-way Bridges only.



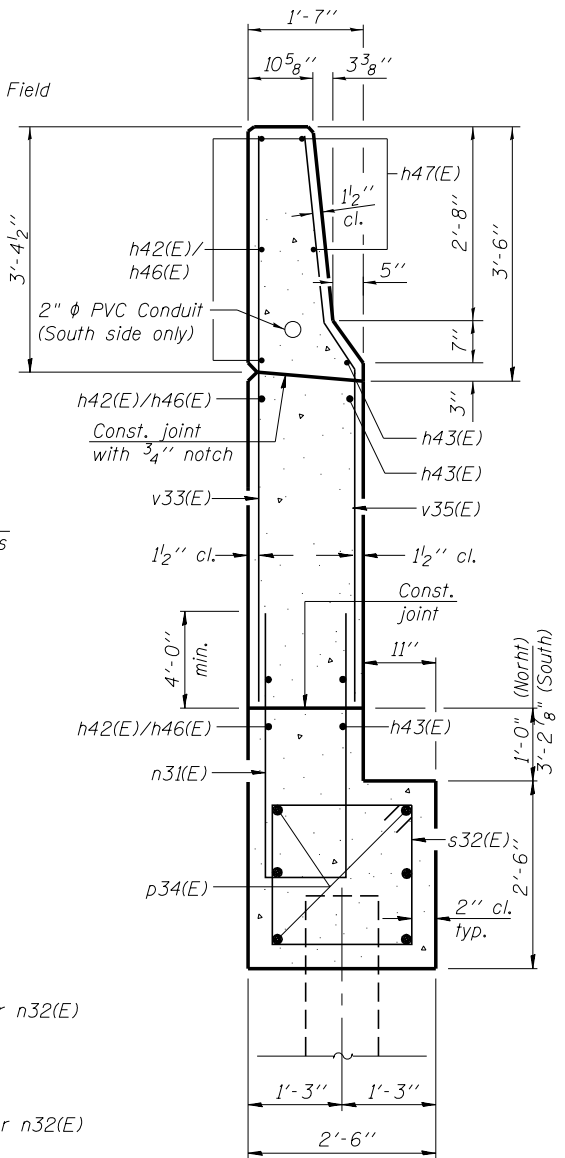
SEC. THRU ABUT.



WING WALL ELEVATION
Showing Reinforcement
South Wing Wall Shown, North Sim.



SECTION B-B



SECTION C-C

Notes:
Hatched area to be poured after superstructure false work has been removed. Quantity of concrete included with Concrete Superstructure on sheet SB14.
Space reinforcement in cap to miss anchor bolts.
Pour steps monolithically with cap.
Quantity of concrete in end post included with Concrete Superstructure on sheet SB14.
For Concrete Encasement details, see sheet SB38.



Alfred Benesch & Company
205 North Michigan Avenue, Suite 2400
Chicago, Illinois 60601
312-565-0450 Job No. 10093

FILE NAME =
0161512.60W77.032.East.Abument.Details.dgn
PLOT SCALE =
PLOT DATE = 6/23/2014

USER NAME = ksnyder
DESIGNED - JHG
CHECKED - KWS
DRAWN - KMS
CHECKED - KWS

REVISOR -
REVISOR -
REVISOR -
REVISOR -

STATE OF ILLINOIS
DEPARTMENT OF TRANSPORTATION

EAST ABUTMENT DETAILS
STRUCTURE NO. 016-1512

SHEET NO. SB32 OF SB43 SHEETS

F.A.P. RTE.	SECTION	COUNTY	TOTAL SHEETS	SHEET NO.
373	(0707-608&611)HB-B	COOK	177	148
CONTRACT NO. 60W77			ILLINOIS FED. AID PROJECT	