

**NOTE:**

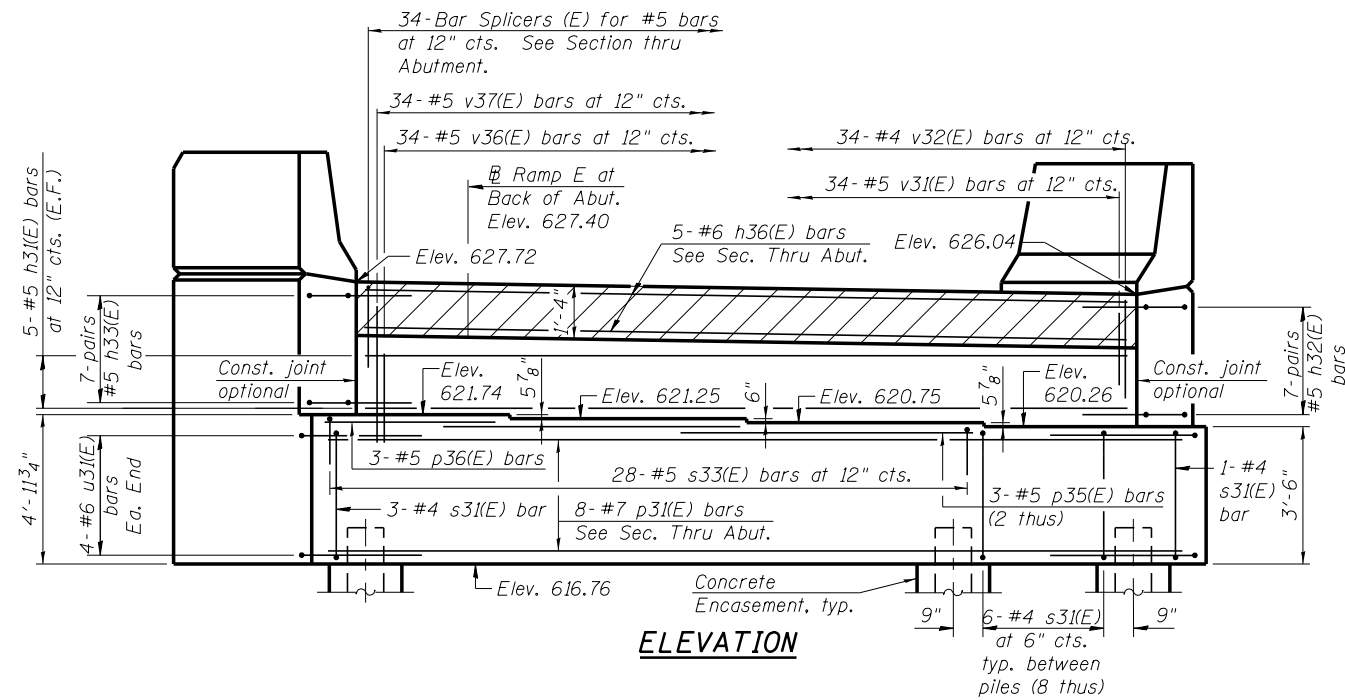
Piles shall be driven through 2'-0" diameter precored holes extending to elevation 577.00 according to Article 512.09(c) of the Standard Specifications. Cost included in driving piles.

**PILE DATA**

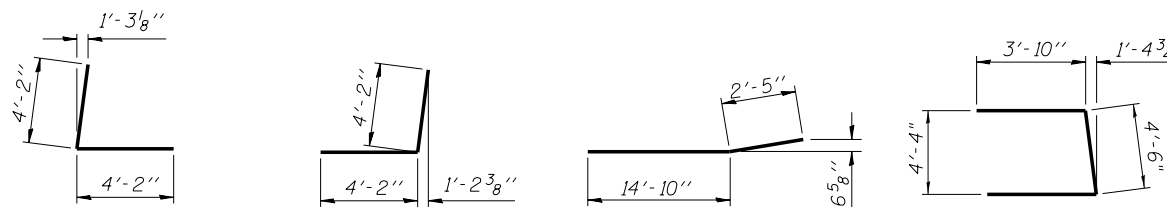
Type: HP 12x53 with pile shoes  
 Nominal Required Bearing: 419 kips  
 Factored Resistance Available: 230 kips  
 Est. Length: 63 feet  
 No. Production Piles: 10  
 No. Test Piles: 1

**WEST ABUTMENT  
 BILL OF MATERIAL**

Bar	No.	Size	Length	Shape
h31(E)	10	#5	33'-3"	—
h32(E)	14	#5	8'-4"	—
h33(E)	14	#5	8'-4"	—
h34(E)	10	#4	16'-8"	—
h35(E)	18	#4	17'-3"	—
h36(E)	5	#6	33'-3"	—
h37(E)	12	#4	17'-8"	—
h38(E)	4	#4	17'-2"	—
n31(E)	30	#6	18'-2"	—
n32(E)	12	#6	9'-1"	—
p31(E)	8	#7	36'-7"	—
p32(E)	12	#7	18'-6"	—
p35(E)	6	#5	11'-10"	—
p36(E)	3	#5	7'-10"	—
s31(E)	52	#4	15'-11"	—
s32(E)	38	#4	9'-5"	—
s33(E)	28	#5	12'-11"	—
u31(E)	8	#6	12'-2"	—
v31(E)	34	#5	3'-9"	—
v32(E)	34	#4	3'-0"	—
v33(E)	36	#6	8'-8"	—
v34(E)	7	#6	8'-1"	—
v35(E)	31	#6	8'-10"	—
v36(E)	34	#5	6'-8"	—
v37(E)	34	#5	8'-0"	—
Pile Shoes	Each		11	
Concrete Structures	Cu. Yd.		62.5	
Concrete Superstructures	Cu. Yd.		4.5	
Reinforcement Bars, Epoxy Coated	Pound		6,490	
Furnishing Steel Piles HP12x53	Foot		630	
Driving Piles	Foot		630	
Test Pile Steel HP12x53	Each		1	
Concrete Encasement	Cu. Yd.		3.8	
Concrete Sealer	Sq. Ft.		390	
Form Liner Textured Surface	Sq. Ft.		200	



**ELEVATION**

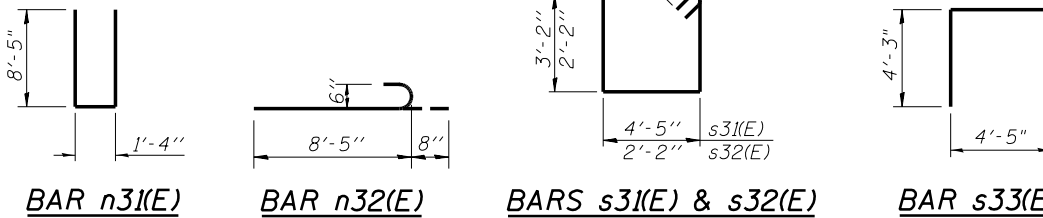


**BAR h32(E)**

**BAR h33(E)**

**BAR h35(E)**

**BAR u31(E)**

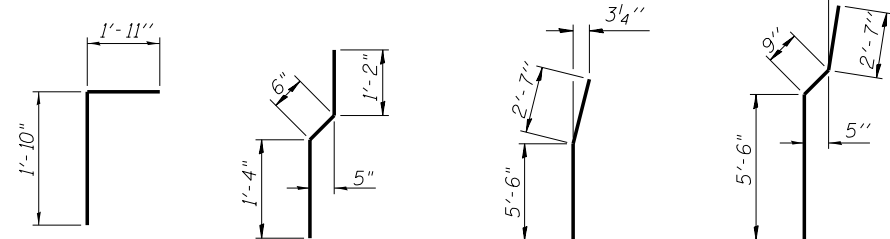


**BAR n31(E)**

**BAR n32(E)**

**BARS s31(E) & s32(E)**

**BAR s33(E)**

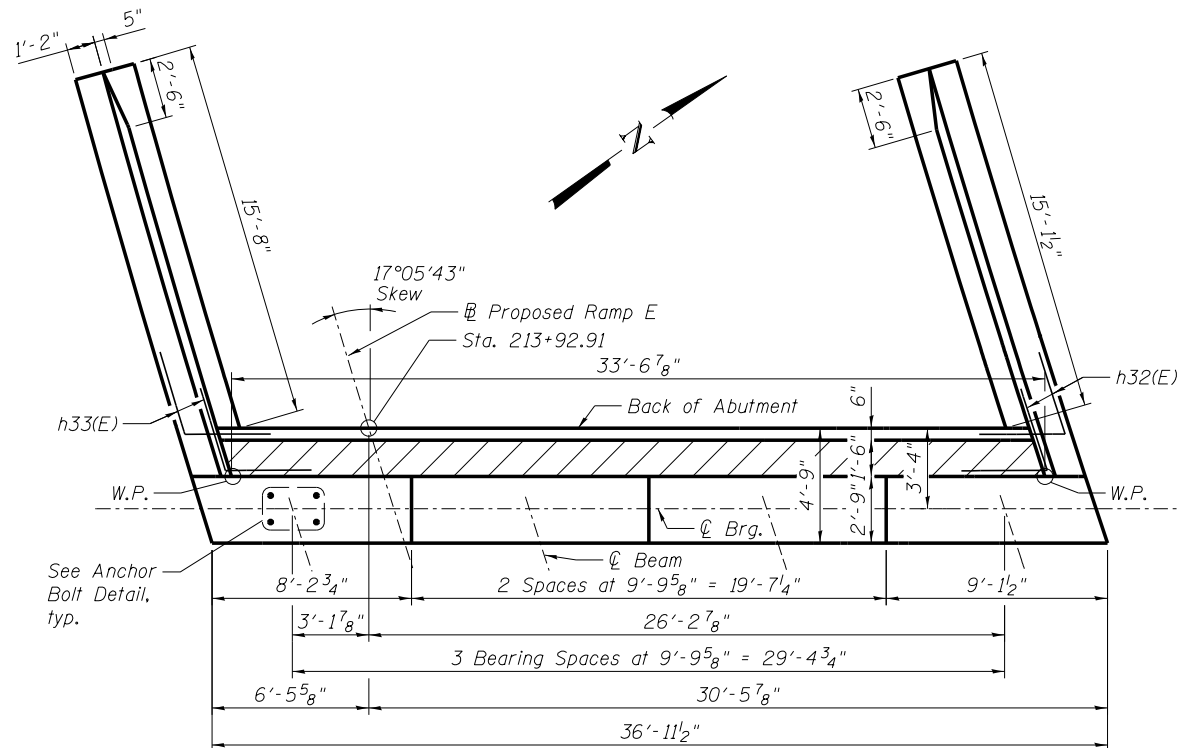


**BAR v31(E)**

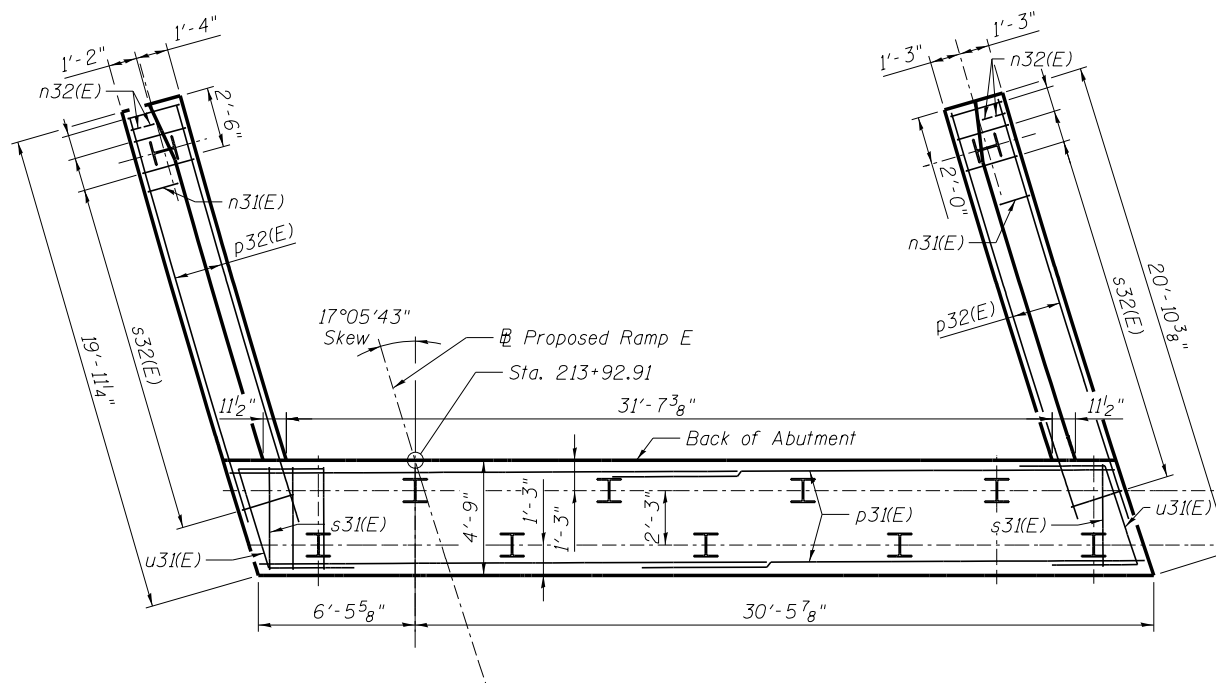
**BAR v32(E)**

**BAR v34(E)**

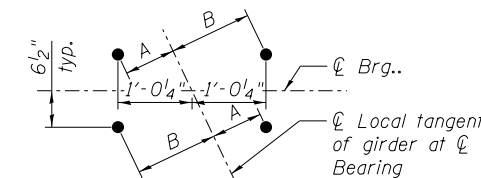
**BAR v35(E)**



**TOP VIEW**



**PLAN-PILE CAP**



**ANCHOR BOLT LAYOUT**

Girder	A	B
1	9 5/8"	1'-1 5/8"
2	9 5/8"	1'-1 5/8"
3	9 3/4"	1'-1 5/8"
4	9 3/4"	1'-1 5/8"

Vertical Piles  
 Battered Piles

**NOTE:**

1. See foundation plan, sheet SB3, for pile layout.

**benesch**  
 engineers - scientists - planners  
 Alfred Benesch & Company  
 205 North Michigan Avenue, Suite 2400  
 Chicago, Illinois 60601  
 312-565-0450 Job No. 10093

FILE NAME = 0161512.60W77.029.West.Abutment.dgn	USER NAME = ksnyder	DESIGNED - JHG	REVISED -
		CHECKED - KWS	REVISED -
		DRAWN - KMS	REVISED -
		CHECKED - KWS	REVISED -

**STATE OF ILLINOIS  
 DEPARTMENT OF TRANSPORTATION**

**WEST ABUTMENT  
 STRUCTURE NO. 016-1512**

SHEET NO. SB29 OF SB43 SHEETS

F.A.P. RTE.	SECTION	COUNTY	TOTAL SHEETS	SHEET NO.
373	(0707-608&611)HB-B	COOK	177	145
				CONTRACT NO. 60W77
ILLINOIS FED. AID PROJECT				

X:\100005\10093\Eng-Docs-Phase-11\SN-016-1512-SB-1st-Ave-to-NB-155-over-155\Final\0161512.60W77.029.West.Abutment.dgn 10:38:58 AM 6/23/2014