

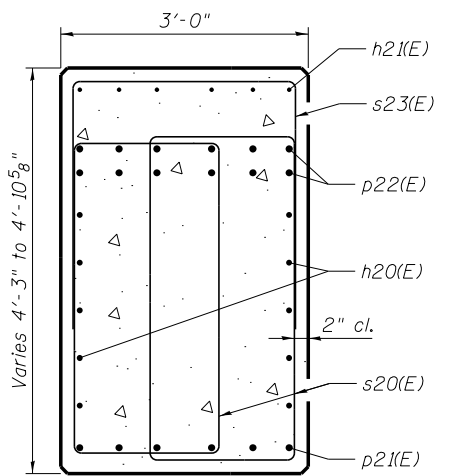
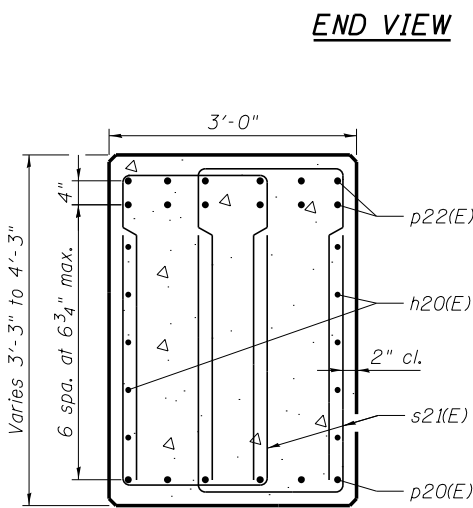
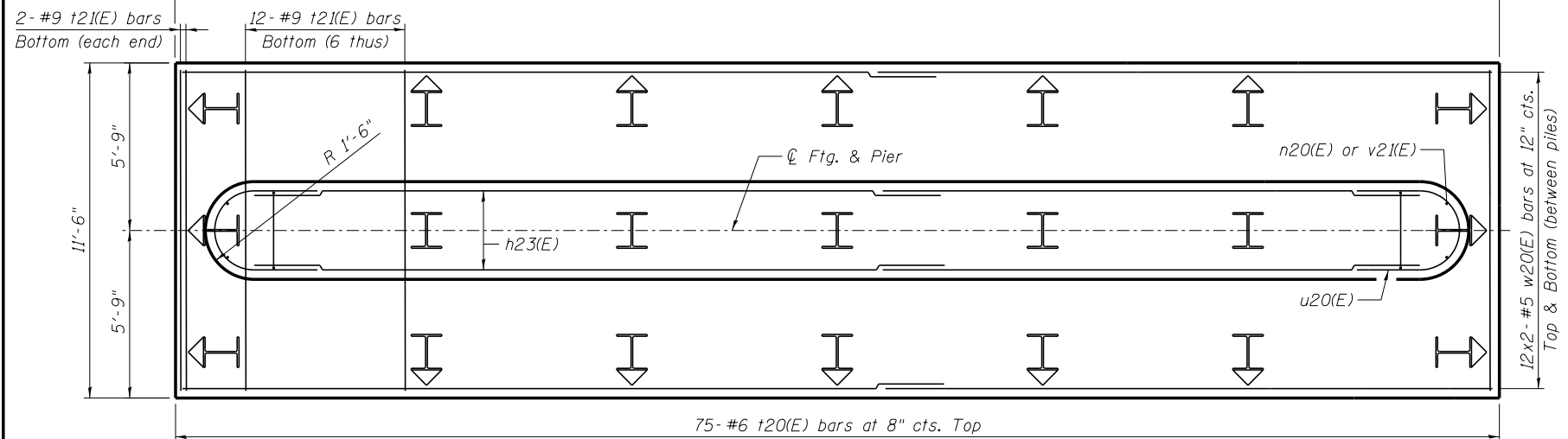
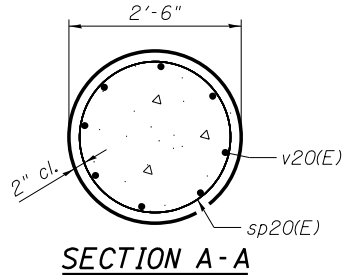
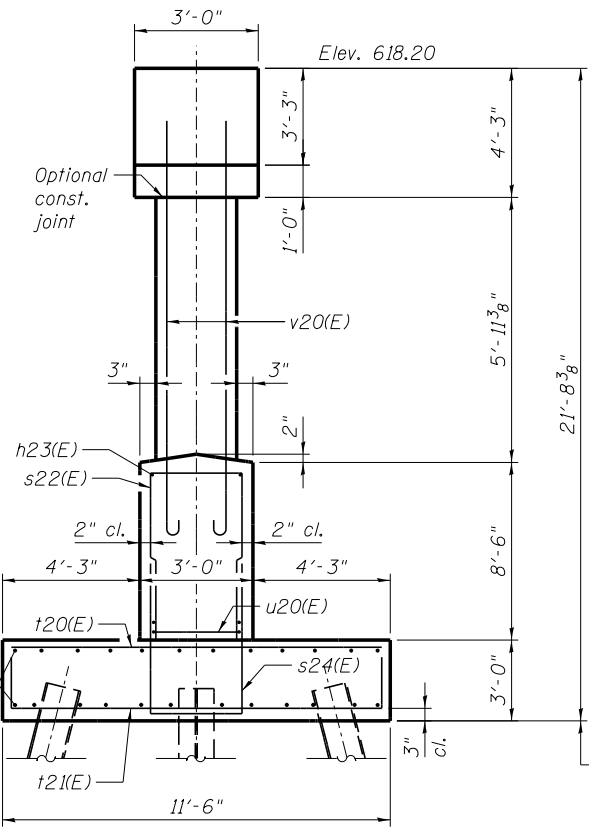
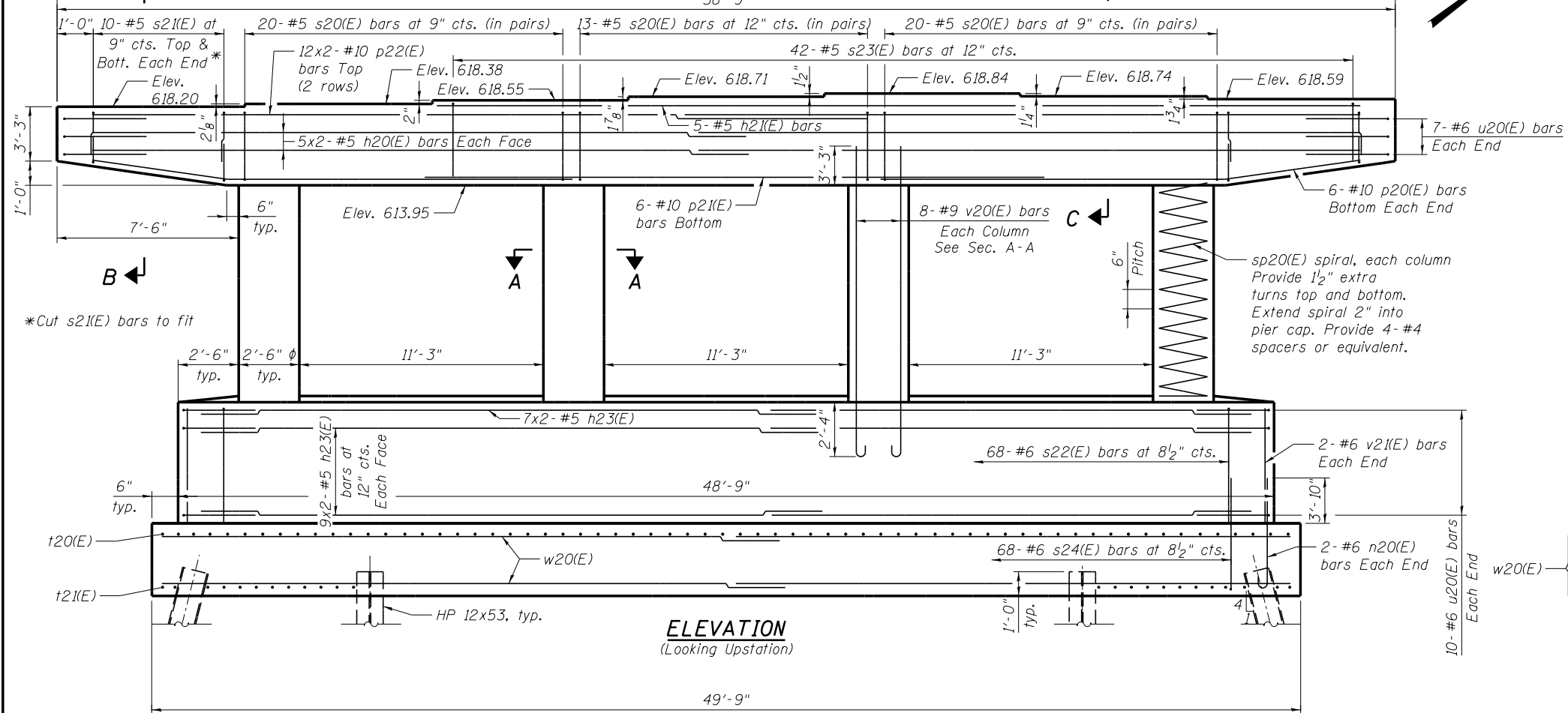
- NOTES:**
1. Space reinforcement in cap to miss anchor bolts.
 2. Pour steps monolithically with cap.
 3. For details of piles, see sheet SA37.
 4. See foundation plan, sheet SA4, for pile layout.
 5. Bars indicated thus 20 x 3-#5 etc. indicates 20 lines of bars with 3 lengths per line.

PILE DATA

Type: HP 12x53 with pile shoes
 Nominal Required Bearing: 418 kips
 Factored Resistance Available: 230 kips
 Est. Length: 33'
 No. Production Piles: 20
 No. Test Piles: 1

MINIMUM BAR LAPS

#5 Bar - 3'-8"
 #10 Bar - 12'-4"



benesch
 engineers - scientists - planners

Alfred Benesch & Company
 205 North Michigan Avenue, Suite 2400
 Chicago, Illinois 60601
 312-565-0450 Job No. 10093

FOOTING PLAN

STATE OF ILLINOIS
DEPARTMENT OF TRANSPORTATION

PIER 1 DETAILS
STRUCTURE NO. 016-1510
 SHEET NO. SA34 OF SA43 SHEETS

F.A.P. RTE.	SECTION	COUNTY	TOTAL SHEETS	SHEET NO.
373	(0707-608&611)HB-B	COOK	177	99
				CONTRACT NO. 60W77
ILLINOIS FED. AID PROJECT				

FILE NAME =	USER NAME = ksnyder	DESIGNED - DMS	REVISED -
0161510.60W77.034_Pier-1_Details.dgn		CHECKED - JHG	REVISED -
	PLOT SCALE =	DRAWN - KMS	REVISED -
	PLOT DATE = 7/21/2014	CHECKED - JHG	REVISED -

X:\10000S\10093\Eng-Docs\Phase-11\SN-016-1510-1511-1st-Ave-cover-155\Final\1510-Final\0161510-60W77-034-Pier-1-Details.dgn 8:20:54 AM 7/21/2014