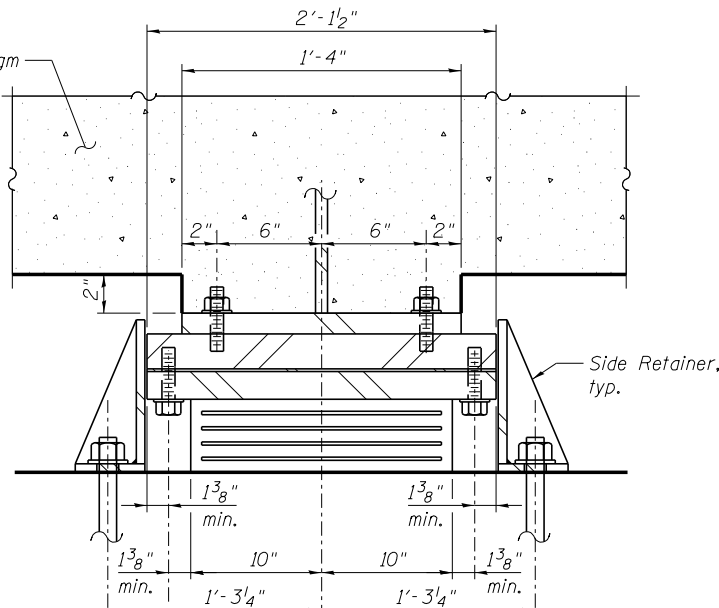


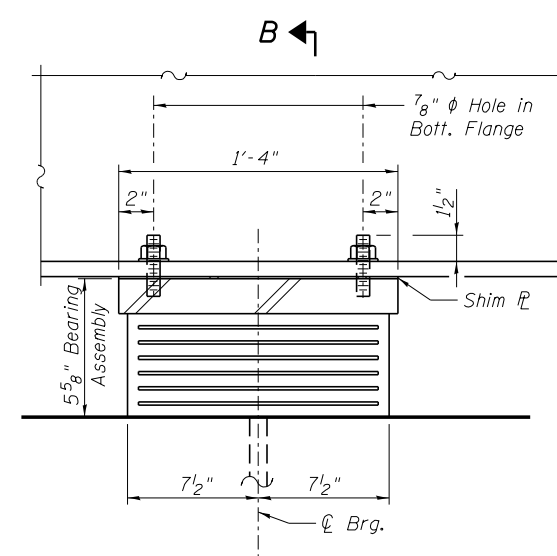
ELEVATION

Concrete diaphragm
 7/8" ϕ Hole in Bott. Flange
 1'-2"
 1 3/4" (S.)
 1 1/2" (N.)
 Shim \mathbb{R}
 5 9/16" (S. Abut.)
 8" (N. Abut.)
 6 1/2" ϕ Brg.
 8"



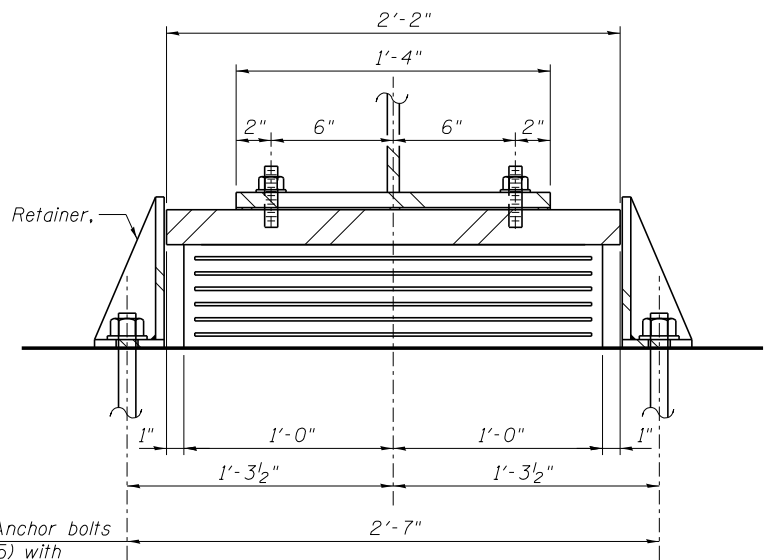
SECTION A-A

2'-1 1/2"
 1'-4"
 2"
 6"
 6"
 2"
 1 3/8" min.
 10"
 10"
 1 3/8" min.
 1'-3 1/4"
 1'-3 1/4"
 2'-6 1/2"
 Side Retainer, typ.
 2'-3 1/4" ϕ H.S. Bolts w/ lock washers (Typ. ea. side) (Coat bolts with anti-seize compound)
 Tapped holes in top \mathbb{R} :
 7/8" ϕ holes in bearing \mathbb{R}



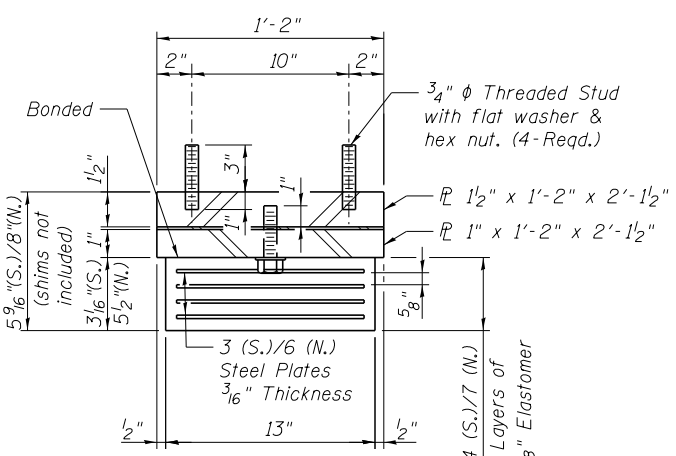
ELEVATION

7/8" ϕ Hole in Bott. Flange
 1'-4"
 2"
 1/2"
 5 5/8" Bearing Assembly
 Shim \mathbb{R}
 7 1/2" ϕ Brg.
 7 1/2"



SECTION B-B

2'-2"
 1'-4"
 2"
 6"
 6"
 2"
 1'-0"
 1'-0"
 1'-3 1/2"
 1'-3 1/2"
 2'-7"
 Side Retainer, typ.

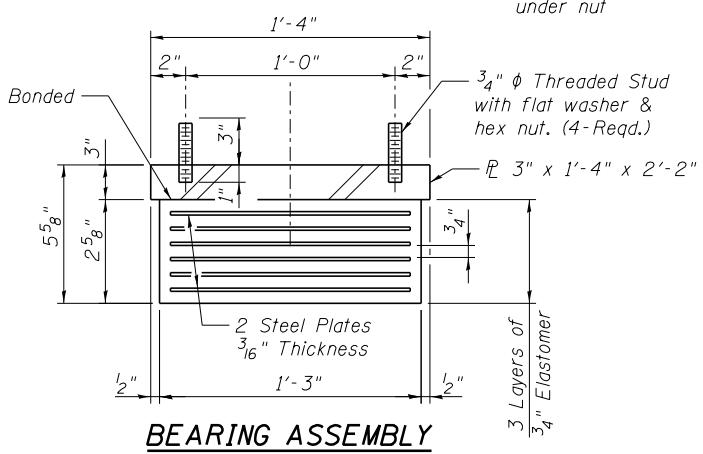


BEARING ASSEMBLY

TYPE I ELASTOMERIC EXP. BRG. SOUTH & NORTH ABUTMENTS
 (14 Required)

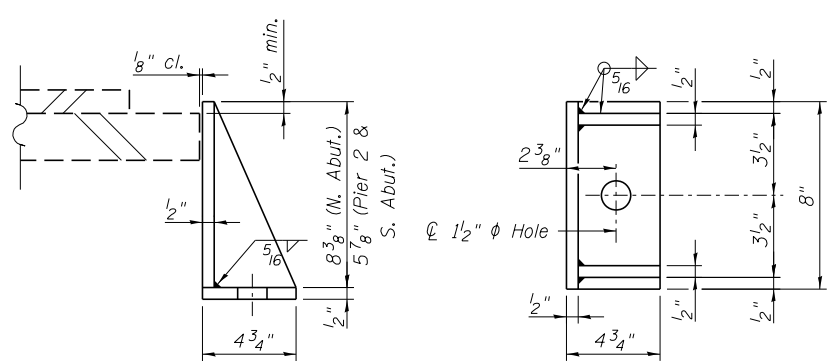
BILL OF MATERIAL

Item	Unit	Total
Elastomeric Bearing Assembly, Type I	Each	21
Anchor Bolts, 1 1/4"	Each	42
Anchor Bolts, 1 1/2"	Each	14



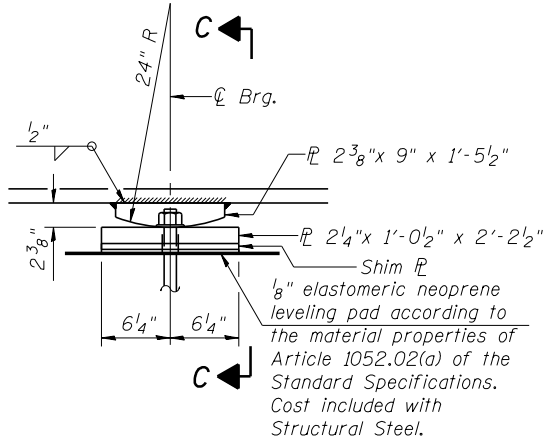
BEARING ASSEMBLY

TYPE I ELASTOMERIC EXP. BRG. PIER 2
 (7 Required)



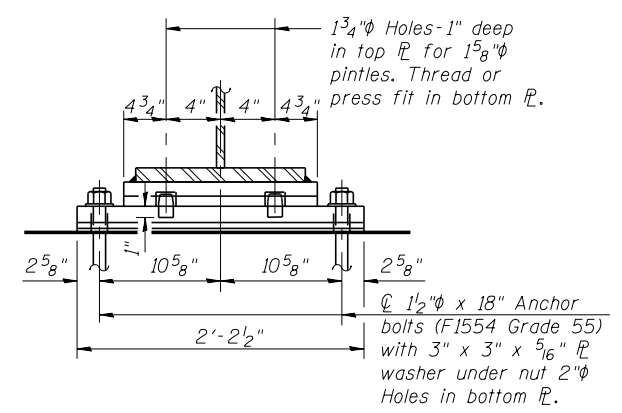
SIDE RETAINER

Equivalent rolled angle with stiffeners will be allowed in lieu of welded plates.

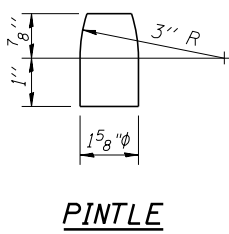


ELEVATION AT PIER 1

FIXED BEARING
 (7 Required)



SECTION C-C



PINTLE

NOTES:

Anchor bolts shall be ASTM F1554 all-thread (or an Engineer-approved alternate material) of the grade(s) and diameter(s) specified. The corresponding specified grade of AASHTO M314 anchor bolts may be used in lieu of ASTM F1554.

Anchor bolts for side retainers may be cast in place or installed in holes drilled before or after members are in place.

Anchor bolts at fixed bearings may be either cast in place or installed in holes drilled after the supported member is in place.

Drilled and set anchor bolts shall be installed according to Article 521.06 of the Standard Specifications.

Side retainers and other steel members required for the elastomeric bearing assembly shall be included in the cost of Elastomeric Bearing Assembly, Type I.

Shim plates shall not be placed under Type I bearing assemblies.

Two 1/8 in. adjusting shims shall be provided for each bearing in addition to all other plates or shims and placed as shown on bearing details.

All (embedded and separate) bearing plates, side retainers, anchor bolts, nuts, washers and pintles shall be galvanized according to AASHTO M111 or M232 as applicable.



Alfred Benesch & Company
 205 North Michigan Avenue, Suite 2400
 Chicago, Illinois 60601
 312-565-0450 Job No. 10093

FILE NAME =	USER NAME = ksnyder	DESIGNED - DMS	REVISED -
0161510.60W77.029_Bearing-Details.dgn		CHECKED - KWS	REVISED -
		DRAWN - DMS	REVISED -
		CHECKED - KWS	REVISED -

STATE OF ILLINOIS
DEPARTMENT OF TRANSPORTATION

BEARING DETAILS
STRUCTURE NO. 016-1510

SHEET NO. SA29 OF SA43 SHEETS

F.A.P. RTE.	SECTION	COUNTY	TOTAL SHEETS	SHEET NO.
373	(0707-608&611)HB-B	COOK	177	94
				CONTRACT NO. 60W77
ILLINOIS FED. AID PROJECT				

X:\100000S\10093\Eng-Docs\Phase-11\SN-016-1510-1511-1st-Ave-cover-155\Final\1510-Final\0161510-60W77-029-Bearing-Details.dgn 10:56:21 AM 6/23/2014