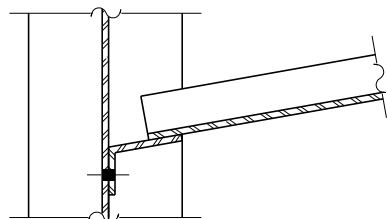


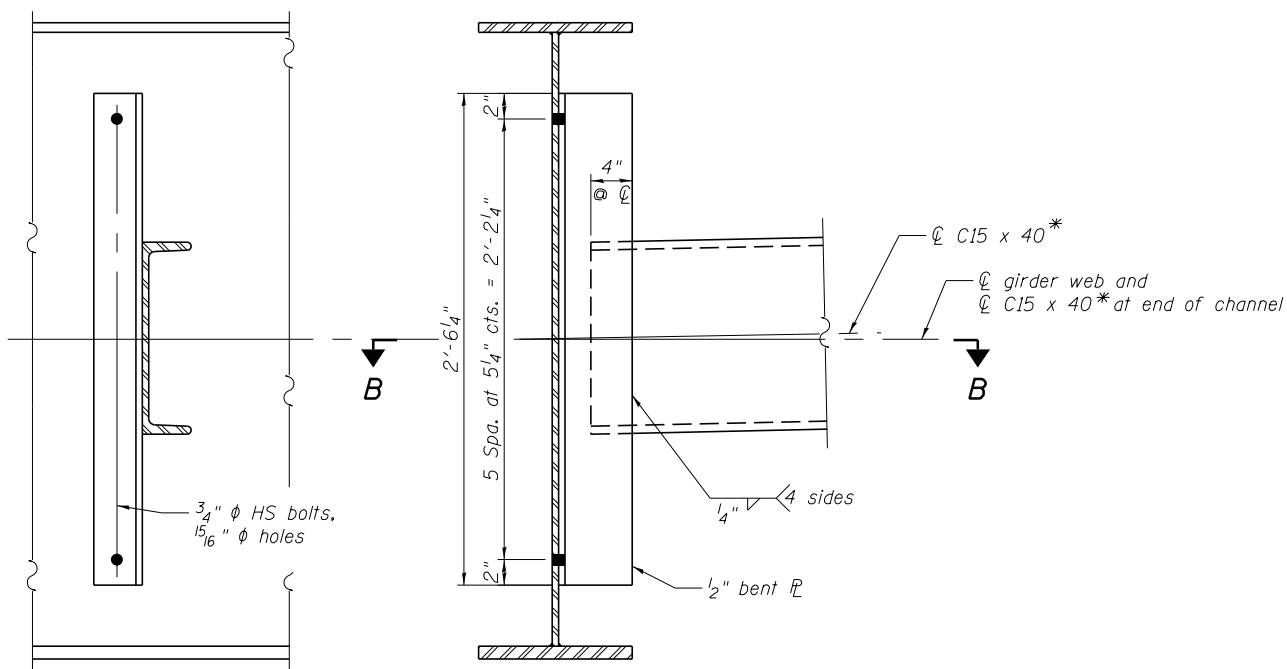
SPLICE TABLE

Splice Location	Top Flange					
	Outer Flange PL	Inner Flange PL	Fill PL	A	B	No. Bolts
Field Splice 1	PL 1/2"x14"x1'-7 1/2"	2-PL 1/2"x6 1/4"x1'-7 1/2"	N/A	2	6"	24
Field Splice 2	PL 1/2"x14"x2'-1 1/2"	2-PL 1/2"x6 1/4"x2'-1 1/2"	PL 1/2"x14"x1'-0 5/8"	3	9"	32
Field Splice 3	PL 1/2"x14"x2'-1 1/2"	2-PL 1/2"x6 1/4"x2'-1 1/2"	PL 1/2"x14"x1'-0 5/8"	3	9"	32
Field Splice 4	PL 1/2"x14"x1'-7 1/2"	2-PL 1/2"x6 1/4"x1'-7 1/2"	PL 1/4"x14"x9 5/8"	2	6"	24
Field Splice 5	PL 1/2"x14"x1'-7 1/2"	2-PL 1/2"x6 1/4"x1'-7 1/2"	PL 1/4"x14"x9 5/8"	2	6"	24

Splice Location	Bottom Flange			Web						
	Outer Flange PL	Inner Flange PL	Fill PL	A	B	No. Bolts	Web Splice PL	C	D	No. Bolts
Field Splice 1	PL 5/8"x16"x2'-7 1/2"	2-PL 5/8"x7 1/4"x2'-7 1/2"	N/A	4	1'-0"	40	PL 3/8"x19 1/2"x3'-0 1/2"	2	6"	72
Field Splice 2	PL 1/2"x16"x2'-7 1/2"	2-PL 1/2"x7 1/4"x2'-7 1/2"	PL 1/4"x16"x1'-3 5/8"	4	1'-0"	40	PL 3/8"x13 1/2"x3'-0 1/2"	1	3"	48
Field Splice 3	PL 5/8"x16"x3'-1 1/2"	2-PL 5/8"x7 1/4"x3'-1 1/2"	N/A	5	1'-3"	48	PL 3/8"x19 1/2"x3'-0 1/2"	2	6"	72
Field Splice 4	PL 3/4"x16"x2'-7 1/2"	2-PL 3/4"x7 1/4"x2'-7 1/2"	N/A	4	1'-0"	40	PL 3/8"x13 1/2"x3'-0 1/2"	1	3"	48
Field Splice 5	PL 3/4"x16"x2'-7 1/2"	2-PL 3/4"x7 1/4"x2'-7 1/2"	N/A	4	1'-0"	40	PL 3/8"x13 1/2"x3'-0 1/2"	1	3"	48

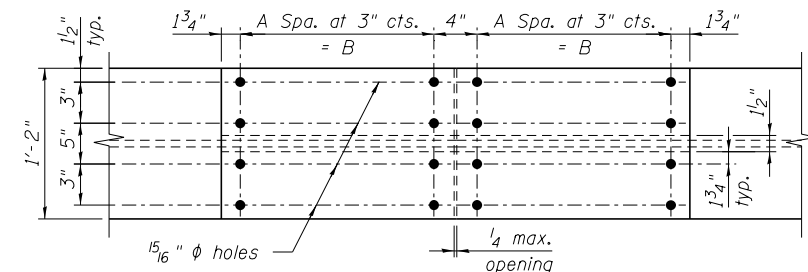


SECTION B-B

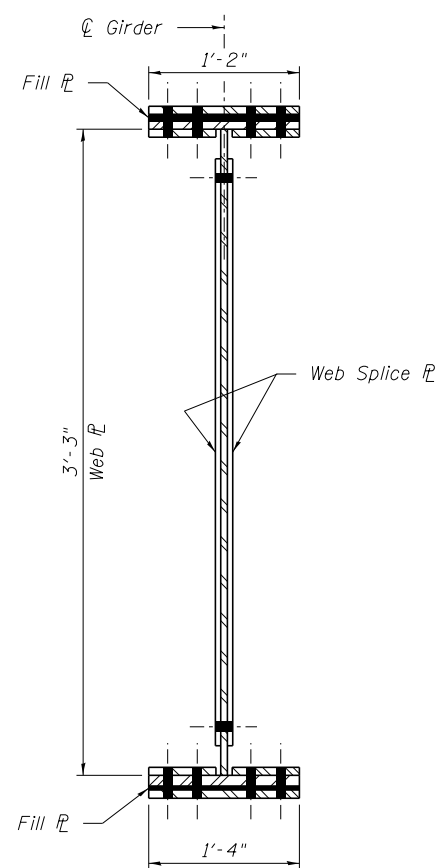


INTERIOR DIAPHRAGM

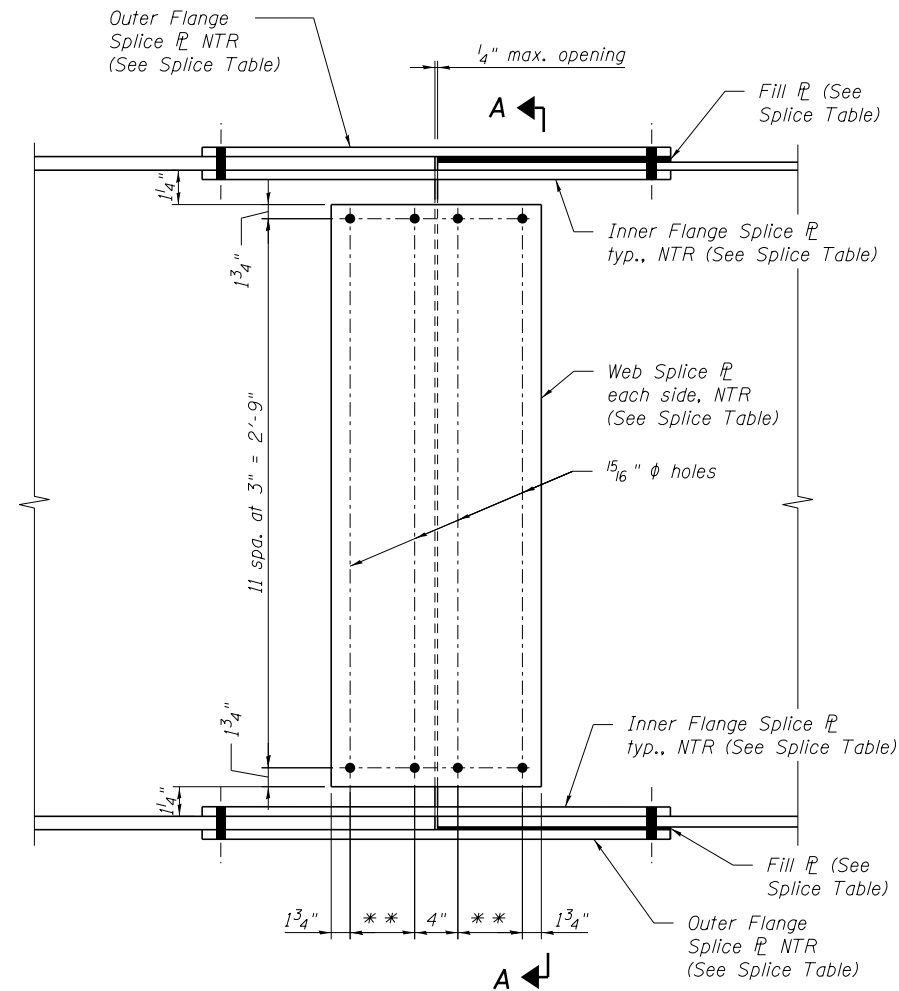
Note:
Two hardened washers required for each set of oversized holes.
* C15 x 50 is permitted to facilitate material acquisition. Calculated weight of structural steel is based on C15 x 40 section.
The alternate, if utilized, shall be provided at no extra cost to the Department.



TOP FLANGE SPLICE

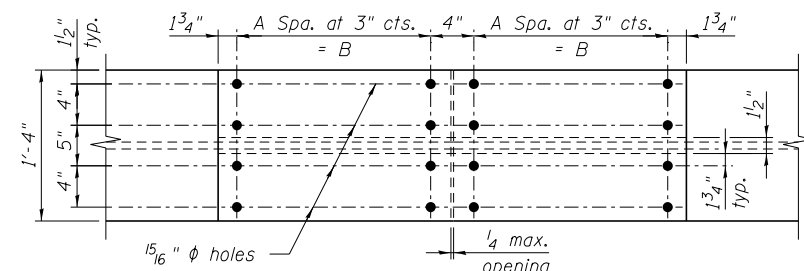


SECTION A-A



ELEVATION - FIELD SPLICE

** C spa. at 3" cts. = D



BOTTOM FLANGE SPLICE



Alfred Benesch & Company
205 North Michigan Avenue, Suite 2400
Chicago, Illinois 60601
312-565-0450 Job No. 10093

FILE NAME =	USER NAME = ksnyder	DESIGNED - DMS	REVISED -
0161510.60W77.027.Steel.Details.1.dgn	PLOT SCALE =	CHECKED - KWS	REVISED -
	PLOT DATE = 6/23/2014	DRAWN - KMS	REVISED -
		CHECKED - KWS	REVISED -

**STATE OF ILLINOIS
DEPARTMENT OF TRANSPORTATION**

**STRUCTURAL STEEL DETAILS (1 OF 2)
STRUCTURE NO. 016-1510**

SHEET NO. SA27 OF SA43 SHEETS

F.A.P. RTE. 373	SECTION (0707-608&611)HB-B	COUNTY COOK	TOTAL SHEETS 177	SHEET NO. 92
CONTRACT NO. 60W77				ILLINOIS FED. AID PROJECT