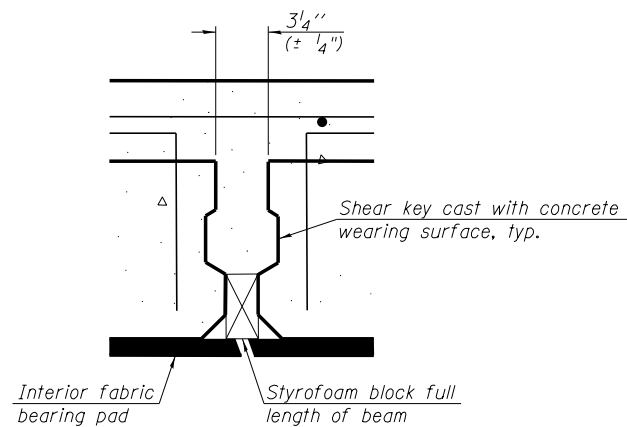
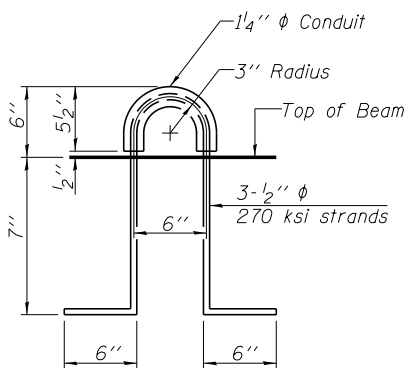


**FABRIC BEARING PAD**

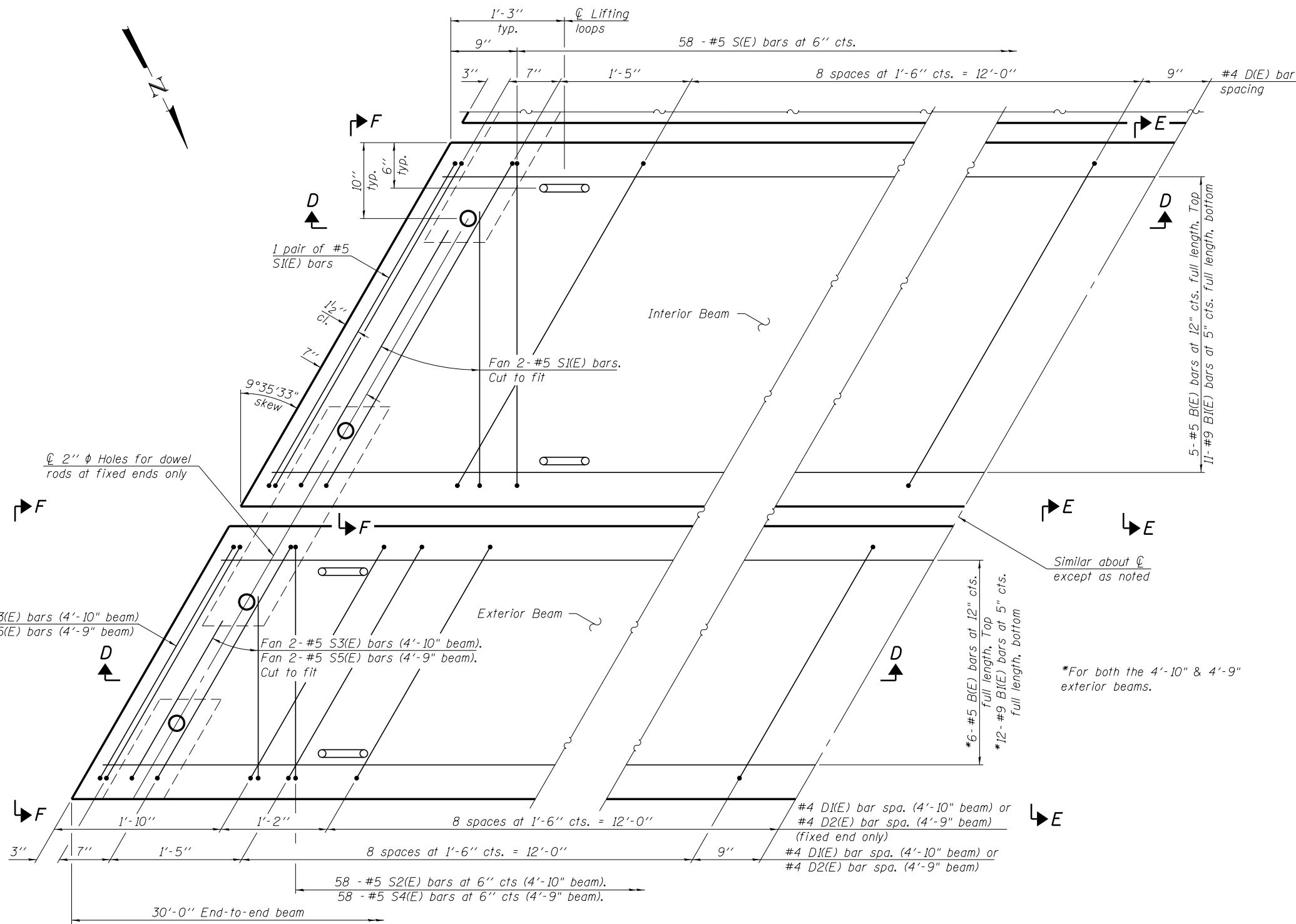
Notes:  
 All bearing pads shall be 1/2" thick.  
 Omit holes for fabric bearing pads at approach slab footing end of beams.  
 Expansion bearing pad shall be bonded to the approach slab footing.



**SECTION THRU SHEAR KEY JOINT**



**LIFTING LOOP DETAIL**



**PLAN VIEW**

(showing precast bridge approach beams)

**benesch**  
 engineers - scientists - planners  
 Alfred Benesch & Company  
 205 North Michigan Avenue, Suite 2400  
 Chicago, Illinois 60601  
 312-565-0450 Job No. 10093

FILE NAME =	USER NAME = ksnyder	DESIGNED - SLV	REVISED -
0161510.60W77.023_NApproach_Details.2.dgn	PLOT SCALE =	CHECKED - JHG	REVISED -
	PLOT DATE = 6/23/2014	DRAWN - SLV	REVISED -
		CHECKED - JHG	REVISED -

**STATE OF ILLINOIS  
 DEPARTMENT OF TRANSPORTATION**

**NORTH PRECAST APPROACH SLAB DETAILS (2 OF 3)  
 STRUCTURE NO. 016-1510**

SHEET NO. SA23 OF SA43 SHEETS

F.A.P. RTE.	SECTION	COUNTY	TOTAL SHEETS	SHEET NO.
373	(0707-608&611)HB-B	COOK	177	88
CONTRACT NO. 60W77			ILLINOIS FED. AID PROJECT	