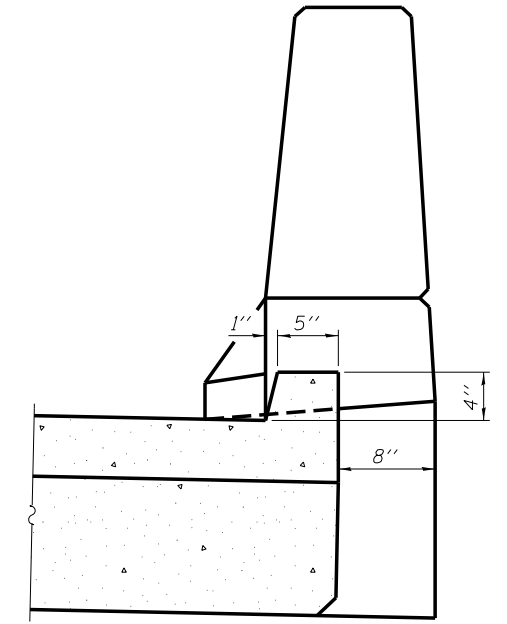
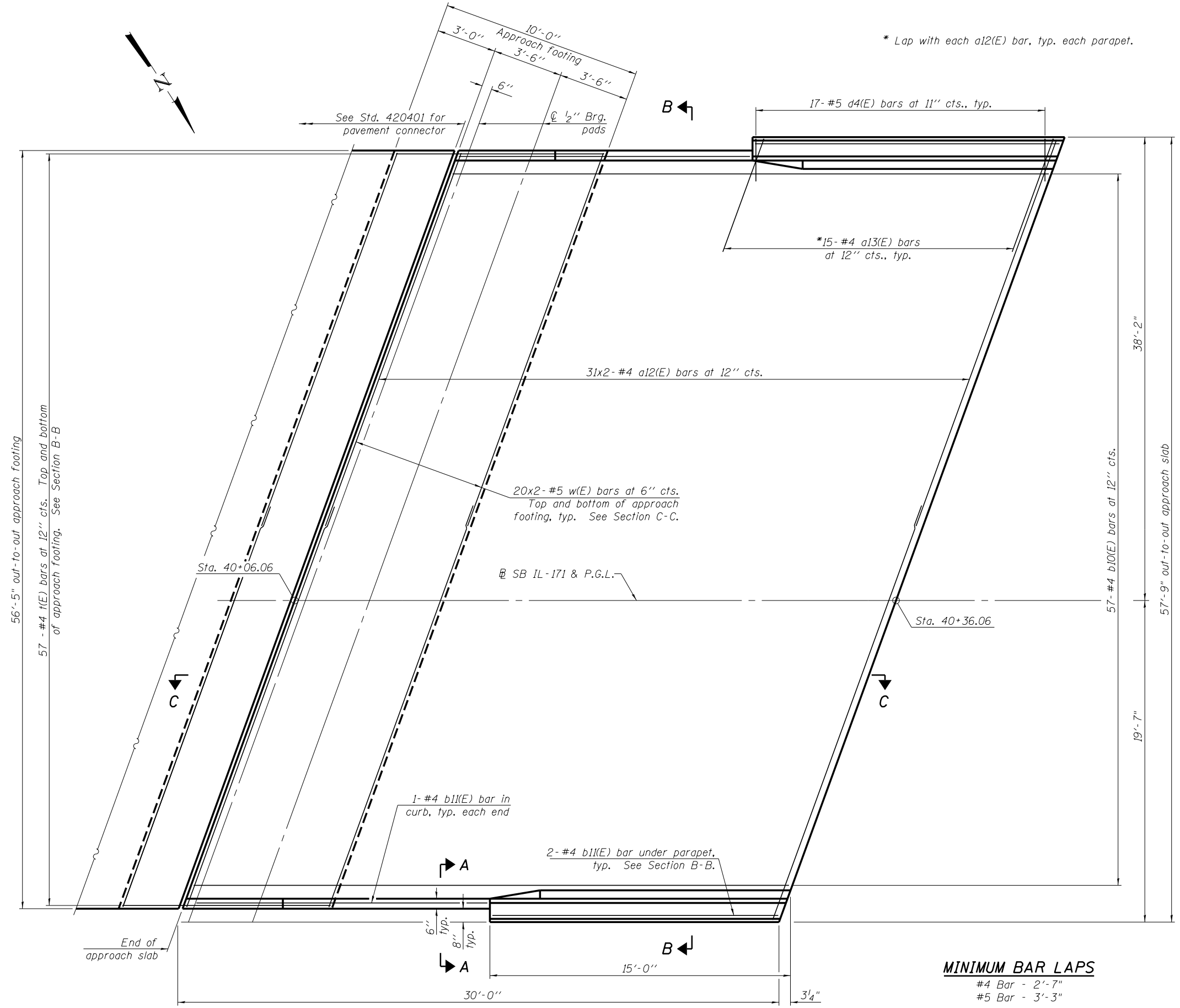
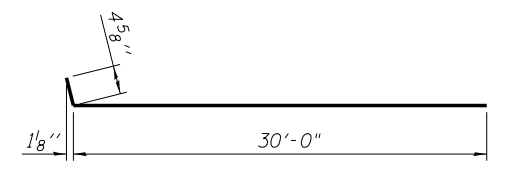




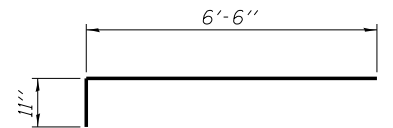
* Lap with each a12(E) bar, typ. each parapet.



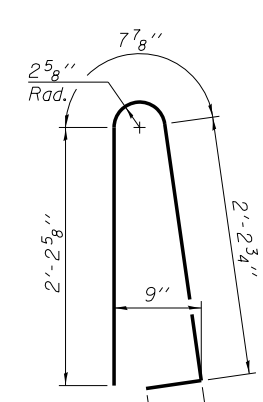
SECTION A-A



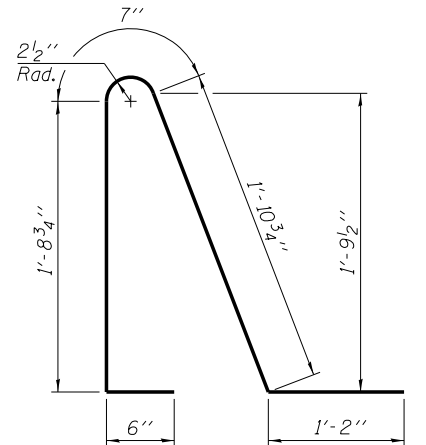
BAR a12(E)



BAR a13(E)



BAR d3(E)



BAR d4(E)

MINIMUM BAR LAPS

- #4 Bar - 2'-7"
- #5 Bar - 3'-3"

PLAN

(Showing Wearing Surface)



Alfred Benesch & Company
205 North Michigan Avenue, Suite 2400
Chicago, Illinois 60601
312-565-0450 Job No. 10093

FILE NAME =	USER NAME = ksnider	DESIGNED - SLV	REVISED -
0161510.60W77.017_SApproach_Plan.dgn		CHECKED - JHG	REVISED -
		DRAWN - SLV	REVISED -
		CHECKED - JHG	REVISED -

**STATE OF ILLINOIS
DEPARTMENT OF TRANSPORTATION**

**SOUTH PRECAST APPROACH SLAB PLAN
STRUCTURE NO. 016-1510**

SHEET NO. SA17 OF SA43 SHEETS

F.A.P. RTE.	SECTION	COUNTY	TOTAL SHEETS	SHEET NO.
373	(0707-608&611)HB-B	COOK	177	82
CONTRACT NO. 60W77			ILLINOIS FED. AID PROJECT	

(Sheet 1 of 4)

X:\100000S\10093\Eng-Docs-Phase-11\SN-016-1510-1511-1st-Ave-over-155\Final\1510_Final\0161510_60W77-017_SApproach_Plan.dgn 10:54:41 AM 6/23/2014