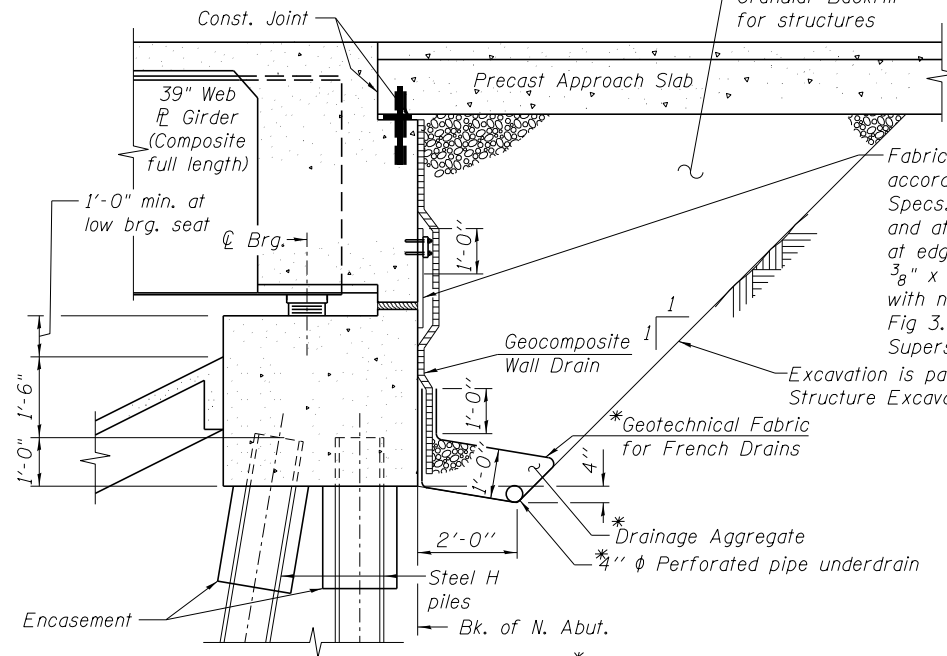


SECTION THRU SOUTH ABUTMENT
(Horiz. Dim. @ Rt. L's)

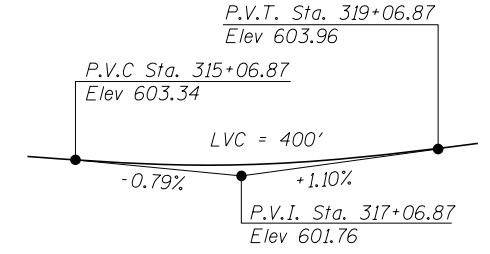


SECTION THRU NORTH ABUTMENT
(Horiz. Dim. @ Rt. L's)

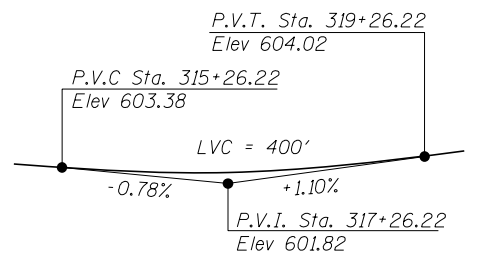
Fabric Reinforced Elastomeric Mat according to Section 1028 of the Std. Specs. Fabric mat shall be 24" wide and attached full width and vertically at edges to the abutment cap with a 3/8" x 5" steel plate and 1/2" φ studs with nuts and washers at 12" cts. See Fig 3.8.4-2. Cost included with Concrete Superstructure.

* Included in the cost of Pipe Underdrains for Structures (see Special Provisions).

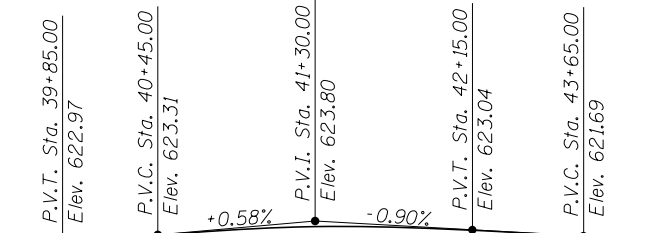
Note:
All drainage system components shall slope away from the IL-171 and extend parallel to the abutment back wall until 2'-0" from the end of the west wingwall. The pipe shall extend until intersecting the side slope. The pipes shall drain into a concrete headwall. (See article 601.05 of the Standard Specifications and Highway Standard 601101).



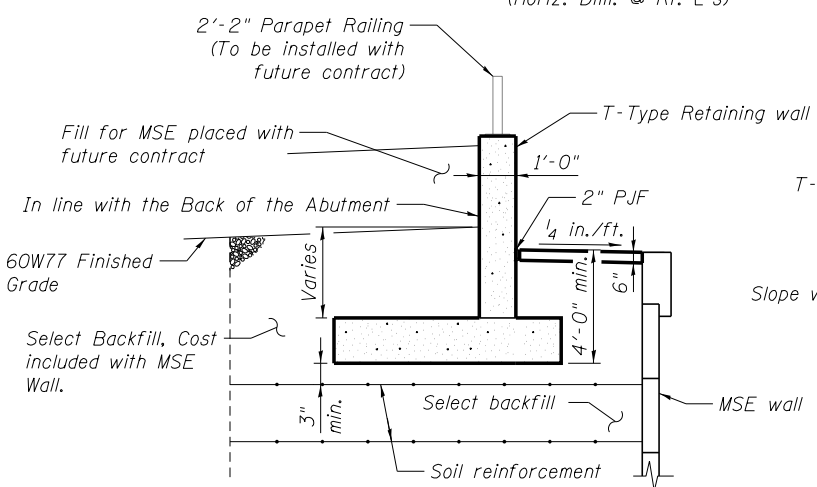
PROFILE GRADE NB & SB I-55
(Along Median Edge of Pavement)



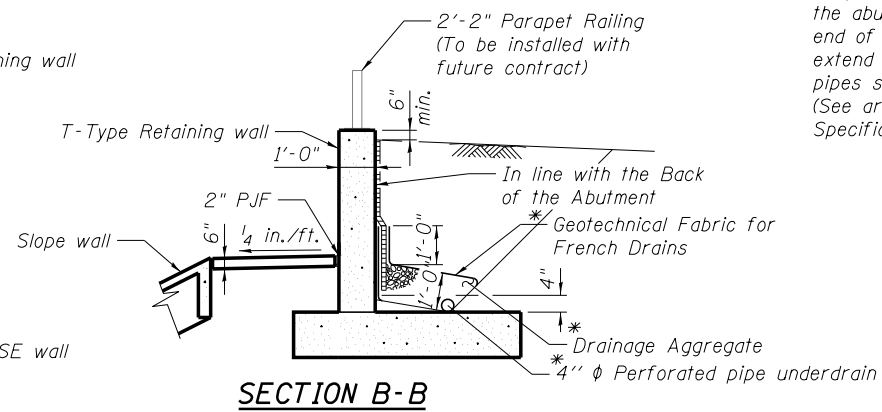
PROFILE GRADE CD ROAD
(Along Edge of Pavement)



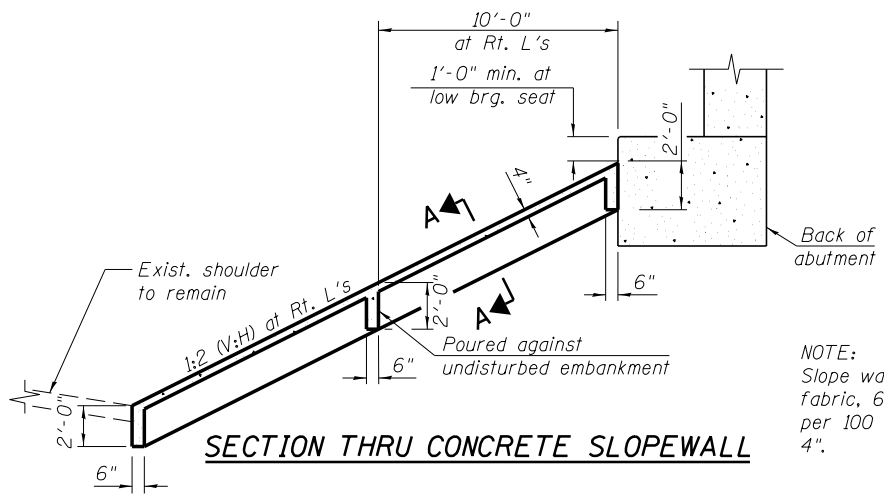
PROFILE GRADE SB IL-171
(Along SB IL-171)



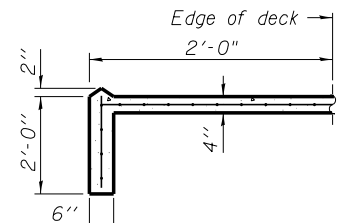
SECTION C-C



SECTION B-B

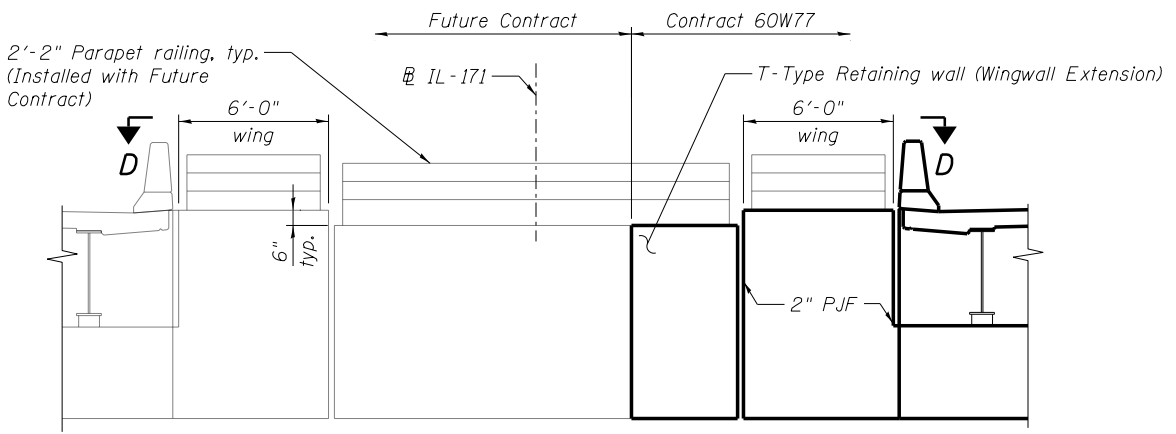


SECTION THRU CONCRETE SLOPEWALL

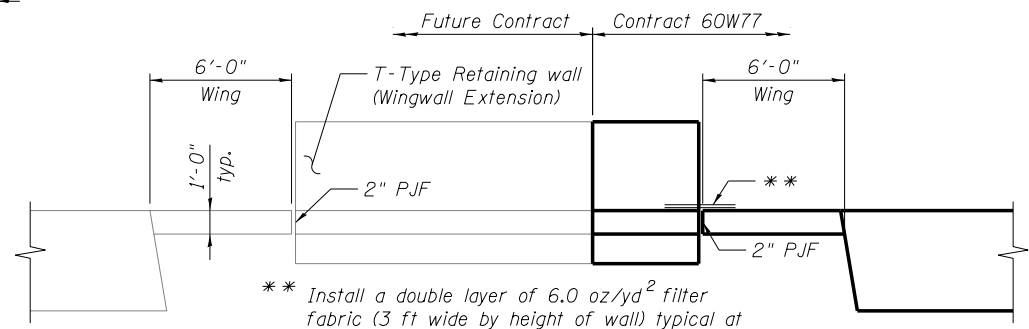


SECTION A-A

NOTE:
Slope wall shall be reinforced with welded wire fabric, 6" x 6" W4.0 x W4.0, weight 58 lbs. per 100 sq. ft. Cost included with Slope Wall 4".



WINGWALL AND RETAINING WALL ELEVATION
(South Abutment shown, North Abutment similar, opposite hand)



VIEW D-D

** Install a double layer of 6.0 oz/yd² filter fabric (3 ft wide by height of wall) typical at joints, cost included with Concrete Structures.



Alfred Benesch & Company
205 North Michigan Avenue, Suite 2400
Chicago, Illinois 60601
312-565-0450 Job No. 10093

FILE NAME =
0161510.60W77.003.GDeta1.s.dgn

USER NAME = ksnider	DESIGNED - JHG	REVISED -
	CHECKED - KWS	REVISED -
PLOT SCALE =	DRAWN - KMS	REVISED -
PLOT DATE = 6/23/2014	CHECKED - KWS	REVISED -

**STATE OF ILLINOIS
DEPARTMENT OF TRANSPORTATION**

**GENERAL DETAILS
STRUCTURE NO. 016-1510**

SHEET NO. SA3 OF SA43 SHEETS

F.A.P. RTE.	SECTION	COUNTY	TOTAL SHEETS	SHEET NO.
373	(0707-608&611)HB-B	COOK	177	68
CONTRACT NO. 60W77			ILLINOIS FED. AID PROJECT	

X:\100000\10093\Eng-Docs-Phase-11\SN-016-1510-1511-1st-Ave-cover-155\Final\1510-1510-60W77-003-0Detail.s.dgn 10:51:29 AM 6/23/2014