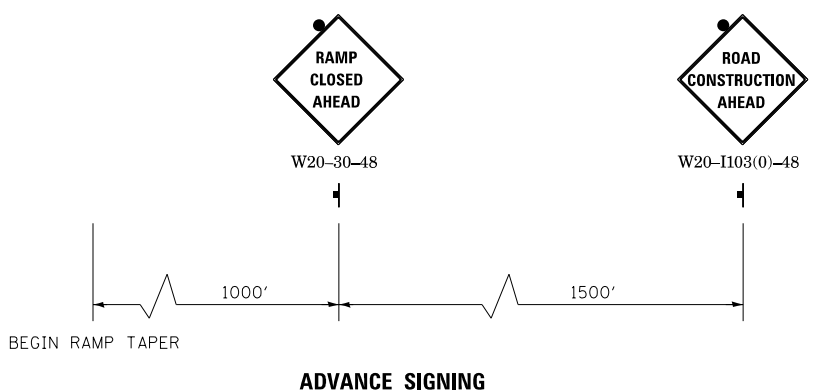
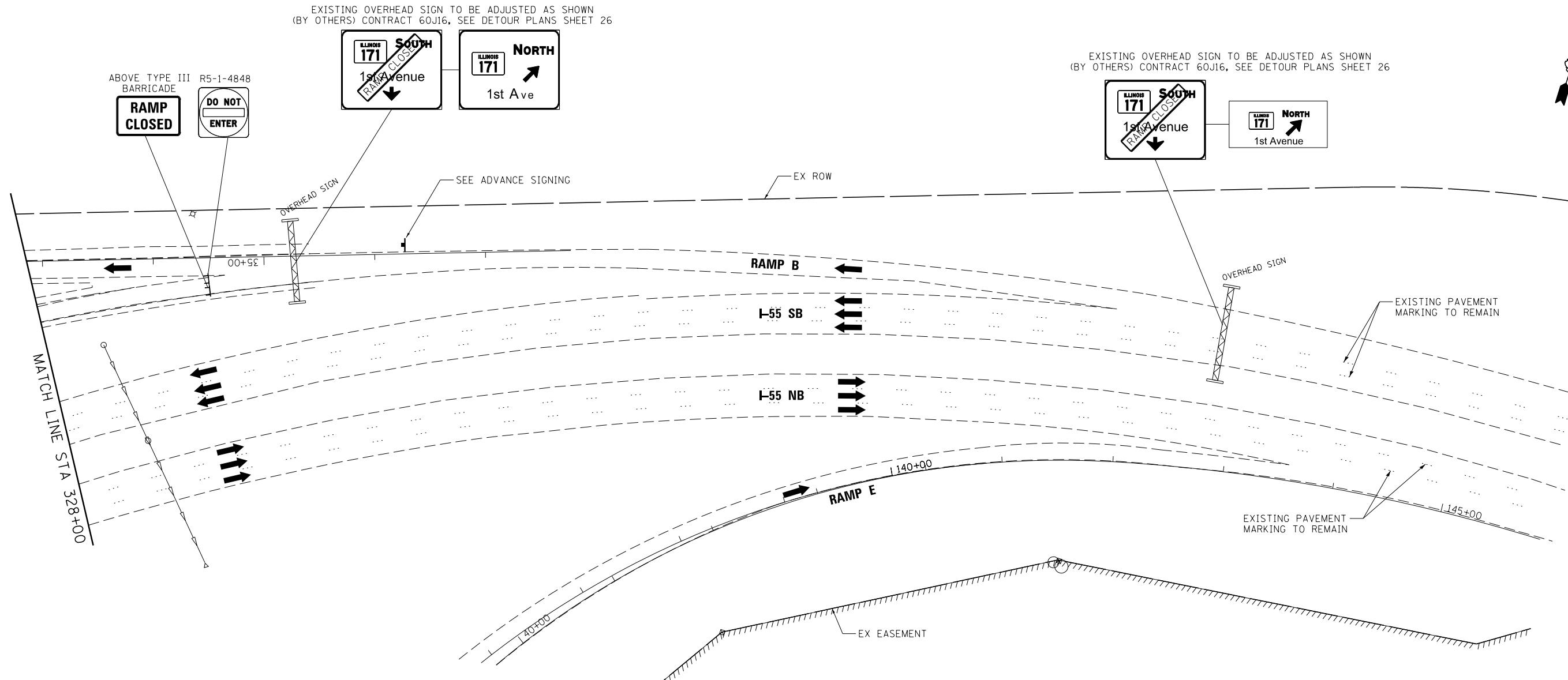


EXISTING OVERHEAD SIGN TO BE ADJUSTED AS SHOWN
(BY OTHERS) CONTRACT 60J16, SEE DETOUR PLANS SHEET 26

EXISTING OVERHEAD SIGN TO BE ADJUSTED AS SHOWN
(BY OTHERS) CONTRACT 60J16, SEE DETOUR PLANS SHEET 26



- NOTES:**
1. ALL SIGNS TO BE INSTALLED ON BOTH RIGHT AND LEFT SHOULDERS.
 2. ALL SIGNAGE TO BE CO-ORDINATED WITH CONTRACT 60J16.
 3. ALL OTHER EXISTING OVERHEAD SIGNS TO THE EAST TO BE ADJUSTED BY OTHERS) CONTRACT 60J16, SEE DETOUR PLANS SHEET 26.

LEGEND

- WORK AREA
 - TRAFFIC LANE
 - TYPE III BARRICADES
 - TEMPORARY SIGN
 - TEMPORARY CONCRETE BARRIER
 - IMPACT ATTENUATORS, TEMPORARY (FULLY-REDIRECTIVE, NARROW), TEST LEVEL 3
 - DRUMS w/ STEADY BURN MONODIRECTIONAL LIGHTS
 - o 50' CENTERS (TYP.)
 - o 25' CENTERS ON CURVES
 - o 20' CENTERS ON TAPERS
- ① WET REFLECTIVE TEMPORARY TAPE, TYPE III, 6 INCH (WHITE)
 - ② WET REFLECTIVE TEMPORARY TAPE, TYPE III, 6 INCH (YELLOW)

FILE NAME =	DESIGNED - AAA	REVISED -
... \MOT\DI60W77-shr-155-st1-03.dgn	DRAWN - TMB	REVISED -
USER NAME = agibson	CHECKED - JMM	REVISED -
PLOT DATE = 6/23/2014	DATE - 6/23/2014	REVISED -



**STATE OF ILLINOIS
DEPARTMENT OF TRANSPORTATION**

**MAINTENANCE OF TRAFFIC
I-55 AND IL 171**

SCALE: 1"=50' SHEET 5 OF 8 SHEETS STA. TO STA.

F.A.P. RTE.	SECTION	COUNTY	TOTAL SHEETS	SHEET NO.
373	(0707-608 & 611)HB-B	COOK	177	31
				CONTRACT NO. 60W77
ILLINOIS FED. AID PROJECT				