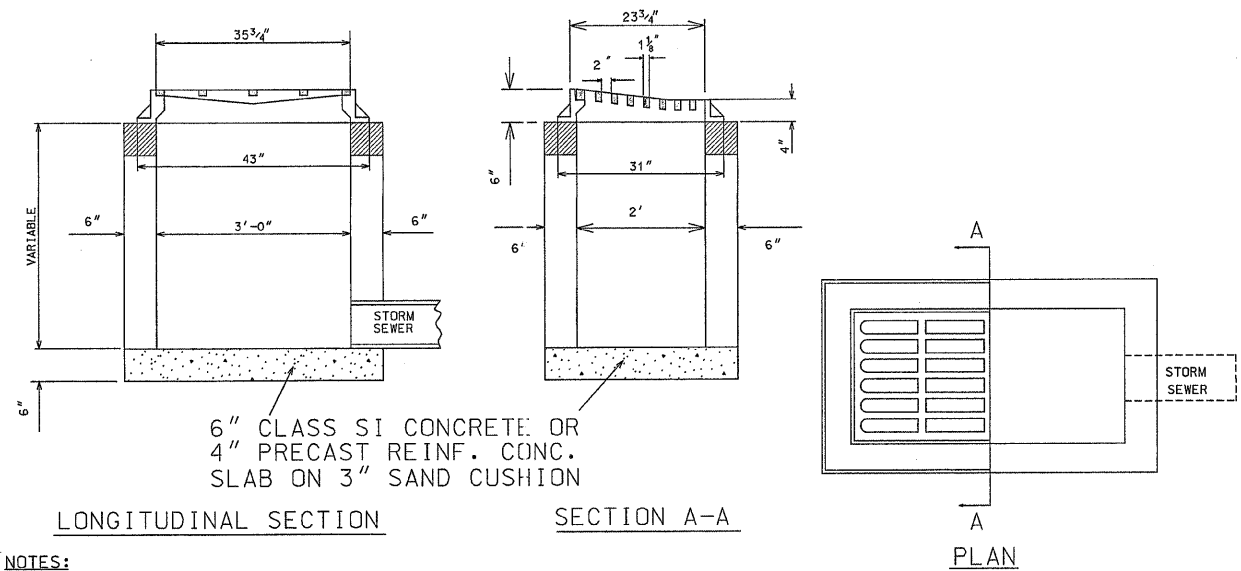


F.A. RTE.	SECTION	COUNTY	TOTAL SHEETS	SHEET NO.
FAPT34	98-00480-00-BR 03-00922-00-TL	WINNEBAGO	62	61
STA. _____		TO STA. _____		
FED. ROAD DIST. NO. _____		ILLINOIS FED. AID PROJECT		

### STANDARD INLET TYPE 700 (DRIVEWAY)

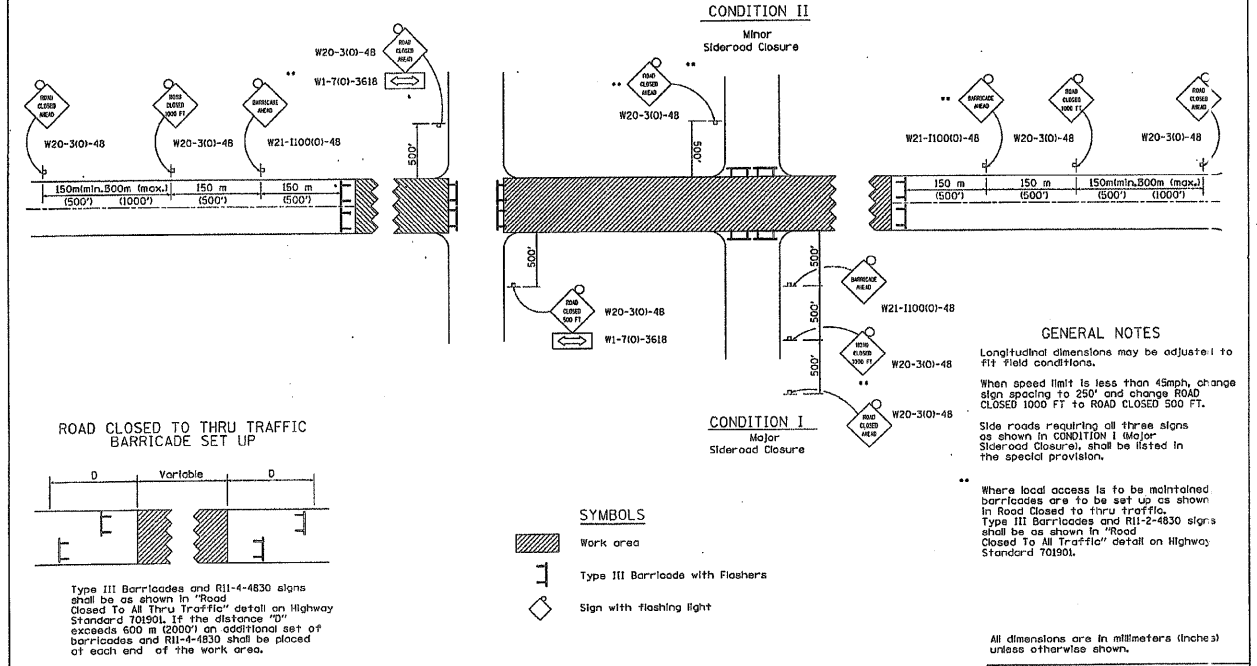


#### NOTES:

THE INLET SHALL BE CAST IN PLACE OR PRECAST, EXCEPT AS NOTED HERE ON INLET TYPE B. SPECIAL WITH FRAME AND GRATE SHALL BE CONSTRUCTED IN ACCORDANCE WITH SECTION 602 OF THE STANDARD SPECIFICATIONS.  
 THE CONTRACT UNIT PRICE EACH FOR INLET, TYPE 700 (DRIVEWAY) WITH FRAME AND GRATE SHALL INCLUDE THE COST OF FURNISHING AND INSTALLING THE INLET BOX, FRAME AND GRATE, AND FLOOR OF INLET WITH SAND CUSHION IF REQUIRED.  
 CLASS SI CONCRETE OR PRECAST CONCRETE SHALL BE USED THROUGHOUT.  
 THE SIDEWALLS MAY BE BUILT AS PRECAST SEGMENTAL SECTIONS.  
 THE HEIGHT OF THE BOX MAY BE CONSTRUCTED 6" SHORT TO ALLOW FOR FIELD ADJUSTMENTS.  
 THE WALL ADJUSTMENTS SHALL BE MADE WITH CONCRETE BUILDING BRICK OR CLASS SI CONCRETE.  
 FRAME AND GRATE TO WEIGHT APPROXIMATELY 420 LBS.  
 (NEENAH R-3290-A W/TYPE C GRATE OR EQUAL)

STANDARD INLET  
 TYPE 700 (DRIVEWAY)  
 STANDARD: WHA 644

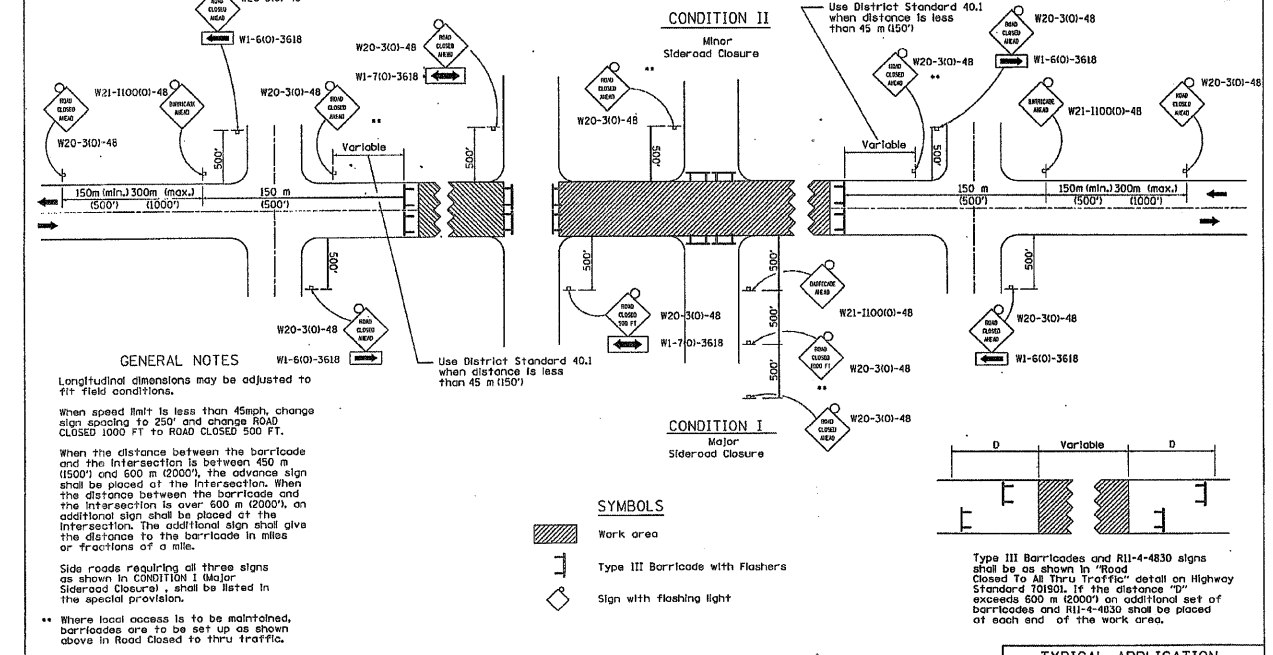
### TRAFFIC CONTROL FOR ROAD CLOSURE



**GENERAL NOTES**  
 Longitudinal dimensions may be adjusted to fit field conditions.  
 When speed limit is less than 45mph, change sign spacing to 250' and change ROAD CLOSED 1000 FT to ROAD CLOSED 500 FT.  
 Side roads requiring all three signs as shown in CONDITION I (Major Sideroad Closure), shall be listed in the special provision.  
 \*\* Where local access is to be maintained, barricades are to be set up as shown above in Road Closed to thru traffic. Type III Barricades and R11-2-4830 signs shall be as shown in "Road Closed to All Traffic" detail on Highway Standard 70190L.

All dimensions are in millimeters (inches) unless otherwise shown.

### TRAFFIC CONTROL FOR ROAD CLOSURE WITH SIDE ROAD WITHIN 150'



**GENERAL NOTES**  
 Longitudinal dimensions may be adjusted to fit field conditions.  
 When speed limit is less than 45mph, change sign spacing to 250' and change ROAD CLOSED 1000 FT to ROAD CLOSED 500 FT.  
 When the distance between the barricade and the intersection is between 450 m (1500') and 600 m (2000'), the advance sign shall be placed at the intersection. When the distance between the barricade and the intersection is over 600 m (2000'), an additional sign shall be placed at the intersection. The additional sign shall give the distance to the barricade in miles or fractions of a mile.  
 Side roads requiring all three signs as shown in CONDITION I (Major Sideroad Closure), shall be listed in the special provision.  
 \*\* Where local access is to be maintained, barricades are to be set up as shown above in Road Closed to thru traffic. Type III Barricades and R11-2-4830 signs shall be as shown in "Road Closed to All Traffic" detail on Highway Standard 70190L.

All dimensions are in millimeters (inches) unless otherwise shown.

TYPICAL APPLICATION FOR ROAD CLOSURE WITH SIDE ROAD WITHIN 150' OF CLOSURE

DESIGNED	REVISION	DATE	BY	SECTION	COUNTY	TITLE

STATE OF ILLINOIS  
 DEPARTMENT OF TRANSPORTATION

REGION 2 / DISTRICT 2 STANDARD

TRAFFIC CONTROL FOR ROAD CLOSURE 40.1

DESIGNED	REVISION	DATE	BY	SECTION	COUNTY	TITLE

STATE OF ILLINOIS  
 DEPARTMENT OF TRANSPORTATION

REGION 2 / DISTRICT 2 STANDARD

TRAFFIC CONTROL FOR ROAD CLOSURE WITH SIDE ROAD WITHIN 150' 40.1a