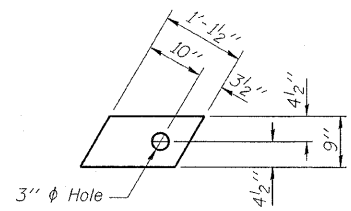


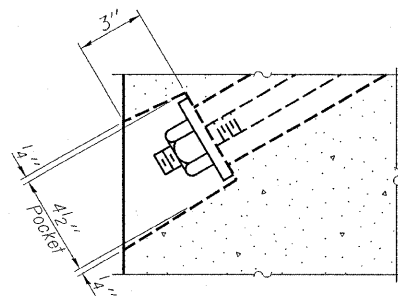
**FABRIC BEARING PAD**  
Interior (10 Required)



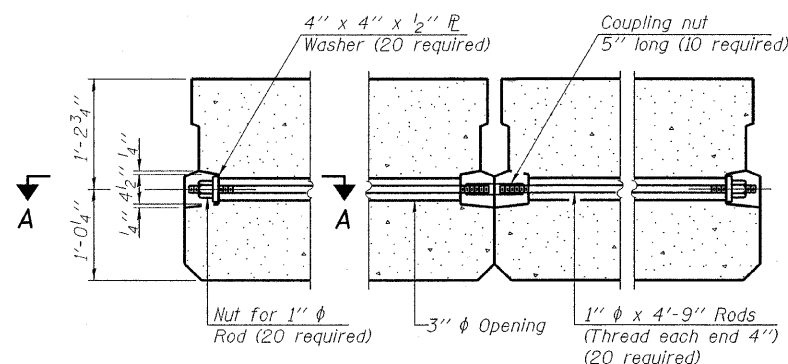
**FABRIC BEARING PAD**  
Exterior (4 Required)

**FIXED**

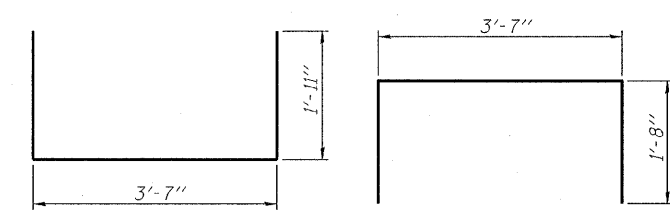
Note: Omit holes when using expansion bearings.



**SECTION A-A**

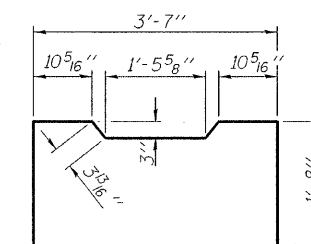


**TYPICAL TRANSVERSE TIE ASSEMBLY**

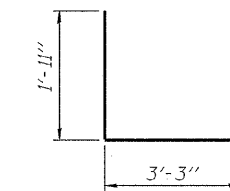


**BAR S(E)**

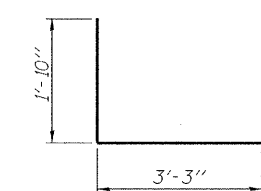
**BAR S1(E)**



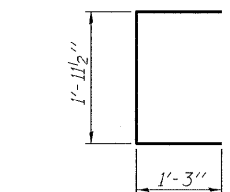
**BAR S2(E)**



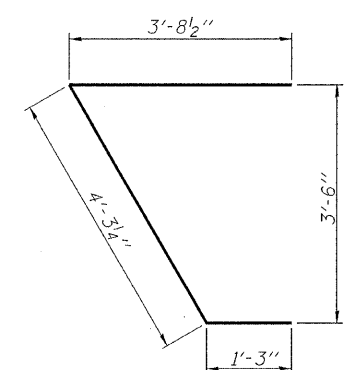
**BAR S3(E)**



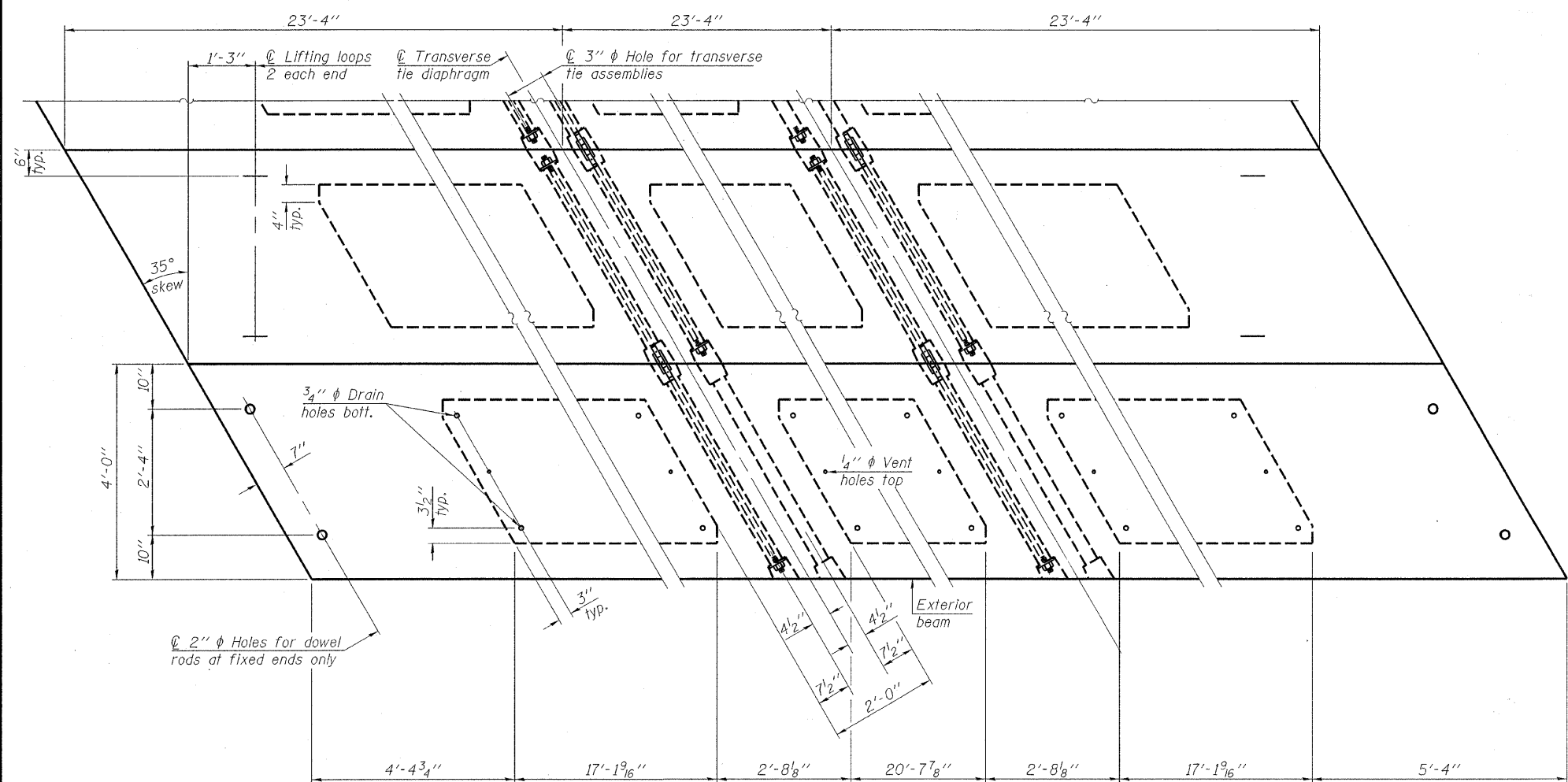
**BAR S4(E)**



**BAR U(E)**



**BAR U1(E)**

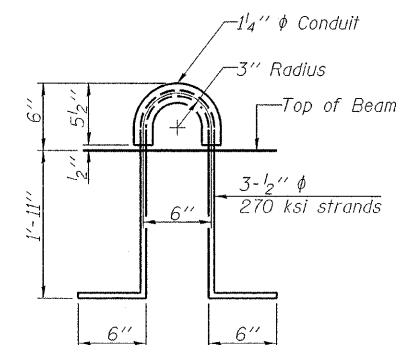


**PLAN VIEW**

Note: Connect beams in pairs with the transverse tie configuration shown.

**NOTES**

- Prestressing steel shall be uncoated high strength, low relaxation 7-wire strand, Grade 270. The nominal diameter shall be 1/2 inch and the nominal cross-sectional area shall be 0.153 sq. in.
- The 1 inch rods in the transverse tie assembly shall be tightened to a snug fit and the threads set. Pockets on exterior faces of bridge shall be filled with grout after transverse tie assembly is in place.
- Reinforcement bars shall conform to ASTM A 706, Grade 60. (See Special Provisions).
- Two 1/8 inch fabric adjusting shims of the dimensions of the exterior bearing pad shall be provided for each bearing pad location.
- A minimum 2 1/2 inch diameter lifting pin shall be used to engage the lifting loops during handling.
- Corrosion inhibitor, per Article 1020.05(b)(12) and 1021.06 of the Standard Specifications, shall be used in the concrete for precast prestressed concrete deck beams.
- Compressive strength of prestressed concrete, f'c, shall be 6000 psi.
- Compressive strength of prestressed concrete at release, f'ci, shall be 5000 psi.



**LIFTING LOOP DETAIL**

**BILL OF MATERIAL**

Precast Prestressed Conc. Deck Bms. (27" depth)	Sq. Ft.	1,680
---	---------	-------

**SUPERSTRUCTURE DETAILS**  
**27" X 48" PPC DECK BEAM DETAILS**  
**STRUCTURE NO. 093-3133**

DESIGNED - S.M.S.
CHECKED - S.W.M.
DRAWN - D.T.M.
CHECKED - D.A.B.

PD-2748-RD 5-16-08

**HAMPTON, LENZINI & RENWICK, INC.**  
CIVIL & STRUCTURAL ENGINEERS  
LAND SURVEYORS

**HLR** 3085 STEVENSON DRIVE, SUITE 201  
SPRINGFIELD, ILLINOIS 62703  
(217) 546-3400

PROJECT NUMBER: 08.0207.130 DATE: 03/31/09

SHEET NO. 3	T.R.	SECTION	COUNTY	TOTAL SHEETS	SHEET NO.
9 SHEETS	37	06-06109-00-BR	WABASH	14	7
			CONTRACT NO. 95584		
FED. ROAD DIST. NO.		ILLINOIS FED. AID PROJECT			