

GENERAL NOTES:

THIS SECTION SHALL BE CONSTRUCTED IN ACCORDANCE WITH THE PLANS, SPECIAL PROVISIONS AND "STANDARD SPECIFICATIONS FOR ROAD AND BRIDGE CONSTRUCTION", ADOPTED JANUARY 1, 2007.

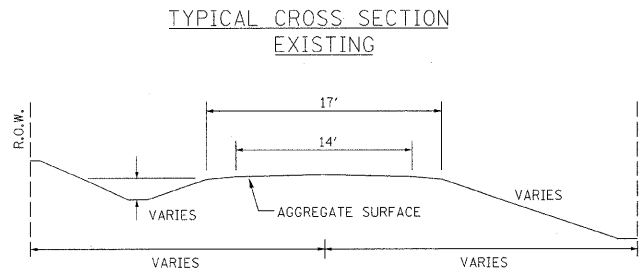
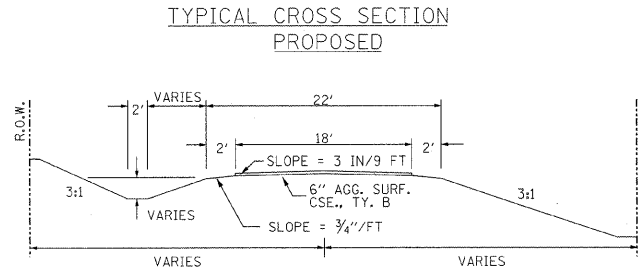
THE WORK INVOLVED ON THIS SECTION CONSISTS OF THE REMOVAL OF THE EXISTING STRUCTURE, THE CONSTRUCTION OF A 70 FOOT LONG SINGLE SPAN PRECAST PRESTRESSED CONCRETE DECK BEAM BRIDGE, ALUMINUM BOX CULVERT, EARTH APPROACHES, AGGREGATE SURFACE COURSE AND OTHER MISCELLANEOUS ITEMS NECESSARY TO COMPLETE THIS SECTION.

ALL ELEVATIONS ARE BASED ON U.S.G.S. MEAN SEA LEVEL DATUM.

IT SHALL BE THE CONTRACTOR'S RESPONSIBILITY TO CONTACT ALL THE UTILITIES, AFFECTING THE PROJECT, PRIOR TO CONSTRUCTION.

NOTE: CONSTRUCTION TRANSITIONS
 STA. 2+00 TO STA. 2+50
 STA. 7+50 TO STA. 8+00
 ALL QUANTITIES ARE INCLUDED IN THE PROPOSAL

MICHAEL JOSEPH LITHELAND
 THOMAS LEE LITHELAND



UTILITIES:
 J.U.L.T.E. 1-800-892-0123
 VERIZON
 1-618-395-6191

NOTE: CONSTRUCT SPECIAL DITCH

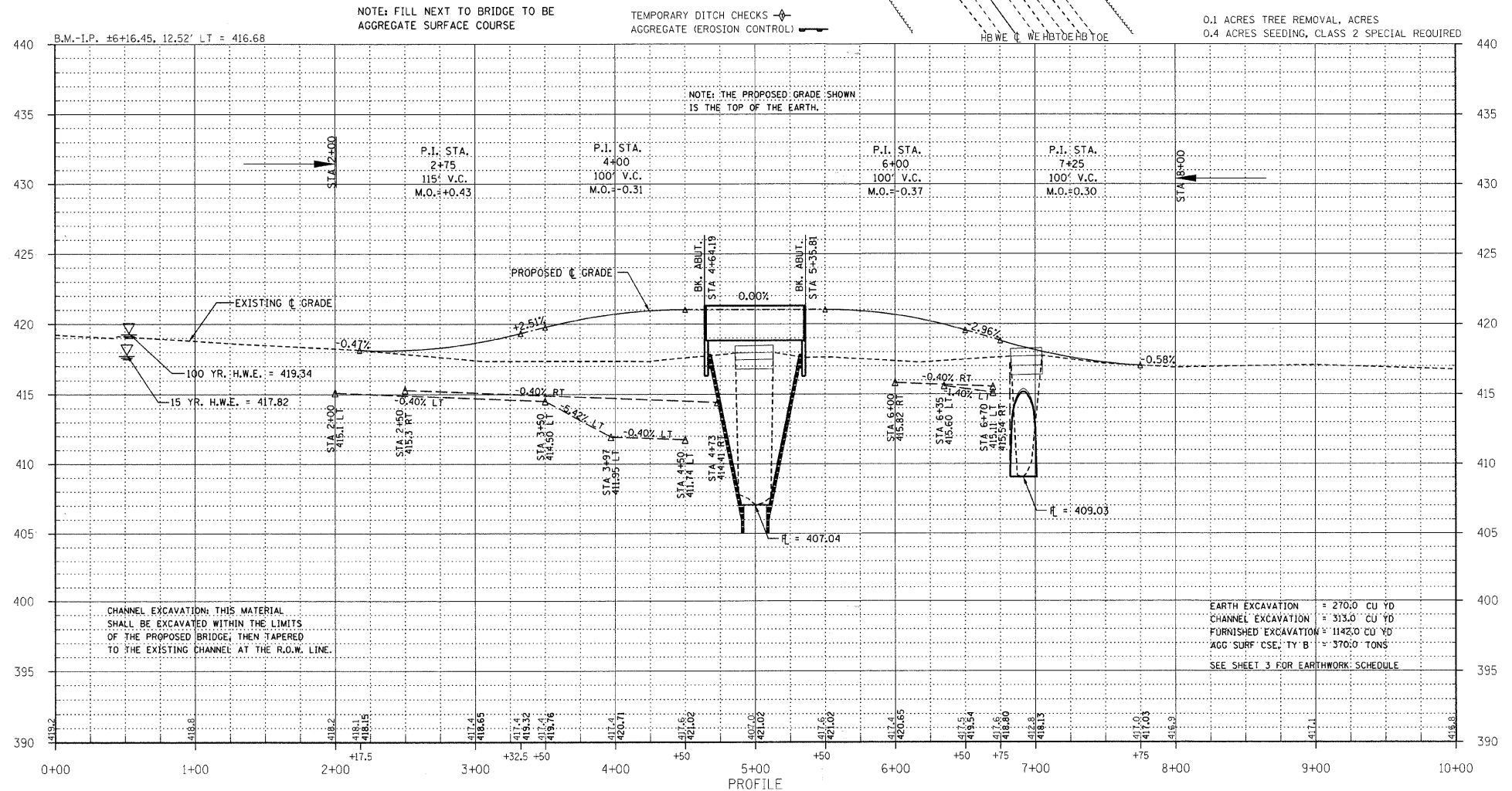
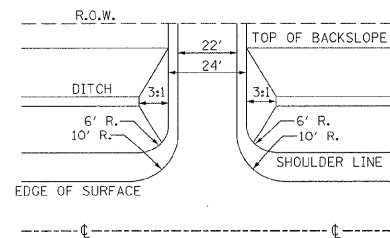
STA 2+50 TO STA 4+73 RT
 STA 2+00 TO STA 4+50 LT
 STA 6+00 TO STA 6+70 RT
 STA 6+35 TO STA 6+70 LT
 STA 7+01 TO STA 7+25 RT
 STA 7+01 TO STA 7+25 LT

NOTE: CONSTRUCT STONE RIPRAP DITCH

STA 3+50 RT TO 4+00 LT (0.62 TON/LIN FT)
 STA 7+01 RT TO 7+25 RT (0.62 TON/LIN FT)
 STA 7+01 LT TO 7+25 LT (0.62 TON/LIN FT)

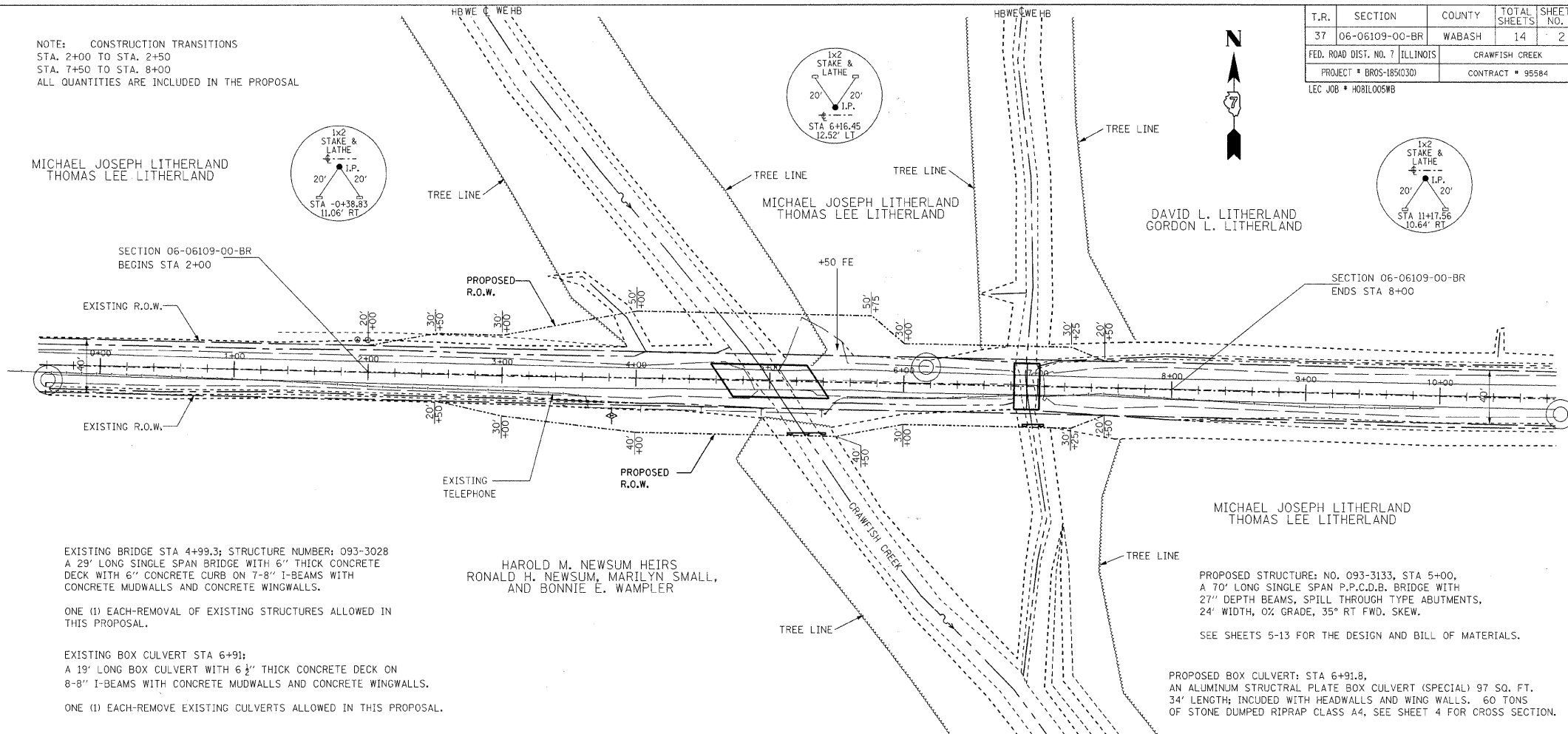
61 TON STONE RIPRAP DITCH ALLOWED IN PROPOSAL.

FIELD ENTRANCE DETAIL



CHANNEL EXCAVATION: THIS MATERIAL SHALL BE EXCAVATED WITHIN THE LIMITS OF THE PROPOSED BRIDGE, THEN TAPERED TO THE EXISTING CHANNEL AT THE R.O.W. LINE.

EARTH EXCAVATION = 270.0 CU YD
 CHANNEL EXCAVATION = 313.0 CU YD
 FURNISHED EXCAVATION = 1142.0 CU YD
 AGG SURF CSE, TY B = 370.0 TONS
 SEE SHEET 3 FOR EARTHWORK SCHEDULE



EXISTING BRIDGE STA 4+99.3; STRUCTURE NUMBER: 093-3028
 A 29' LONG SINGLE SPAN BRIDGE WITH 6" THICK CONCRETE DECK WITH 6" CONCRETE CURB ON 7-8" I-BEAMS WITH CONCRETE MUDWALLS AND CONCRETE WINGWALLS.

ONE (1) EACH-REMOVAL OF EXISTING STRUCTURES ALLOWED IN THIS PROPOSAL.

EXISTING BOX CULVERT STA 6+91;
 A 19' LONG BOX CULVERT WITH 6 1/2" THICK CONCRETE DECK ON 8-8" I-BEAMS WITH CONCRETE MUDWALLS AND CONCRETE WINGWALLS.

ONE (1) EACH-REMOVE EXISTING CULVERTS ALLOWED IN THIS PROPOSAL.

NOTE: FILL NEXT TO BRIDGE TO BE AGGREGATE SURFACE COURSE
 TEMPORARY DITCH CHECKS -> AGGREGATE (EROSION CONTROL)

PROPOSED STRUCTURE: NO. 093-3133, STA 5+00, A 70' LONG SINGLE SPAN P.P.C.D.B. BRIDGE WITH 27" DEPTH BEAMS, SPILL THROUGH TYPE ABUTMENTS, 24' WIDTH, 0% GRADE, 35° RT FWD. SKEW.
 SEE SHEETS 5-13 FOR THE DESIGN AND BILL OF MATERIALS.

PROPOSED BOX CULVERT: STA 6+91.8, AN ALUMINUM STRUCTURAL PLATE BOX CULVERT (SPECIAL) 97 SQ. FT. 34' LENGTH; INCLUDED WITH HEADWALLS AND WING WALLS. 60 TONS OF STONE DUMPED RIPRAP CLASS A4, SEE SHEET 4 FOR CROSS SECTION.

0.1 ACRES TREE REMOVAL, ACRES
 0.4 ACRES SEEDING, CLASS 2 SPECIAL REQUIRED

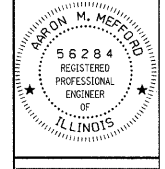
T.R.	SECTION	COUNTY	TOTAL SHEETS	SHEET NO.
37	06-06109-00-BR	WABASH	14	2

323 W. 3RD. ST.
 P.O. BOX 160
 MT. CARMEL, IL 62863
 PHONE: (618)-262-8651
 FAX: (618)-263-3327

405 W. STATE ST.
 SUITE 1
 PRINCETON, IN 47670
 PHONE: (812)-386-7611
 FAX: (812)-385-2812



PROFESSIONAL DESIGN FIRM
 LAND SURVEY & PROFESSIONAL ENGINEERING CORPORATION
 184-000887
 (62-032435)(35-002789)



AARON M. MEFFORD
 NAME
 Signature
 DATE
 11-30-09
 EXPIRES

CRAWFISH CREEK
 TOWNSHIP ROUTE 37
 WABASH COUNTY, ILLINOIS

SHEET TITLE:	
PLAN & PROFILE	
SCALE:	VARIES
BY:	AMM
DATE:	4/09
REV:	
2	OF 14
SHEETS	
SHEET NO. 2	