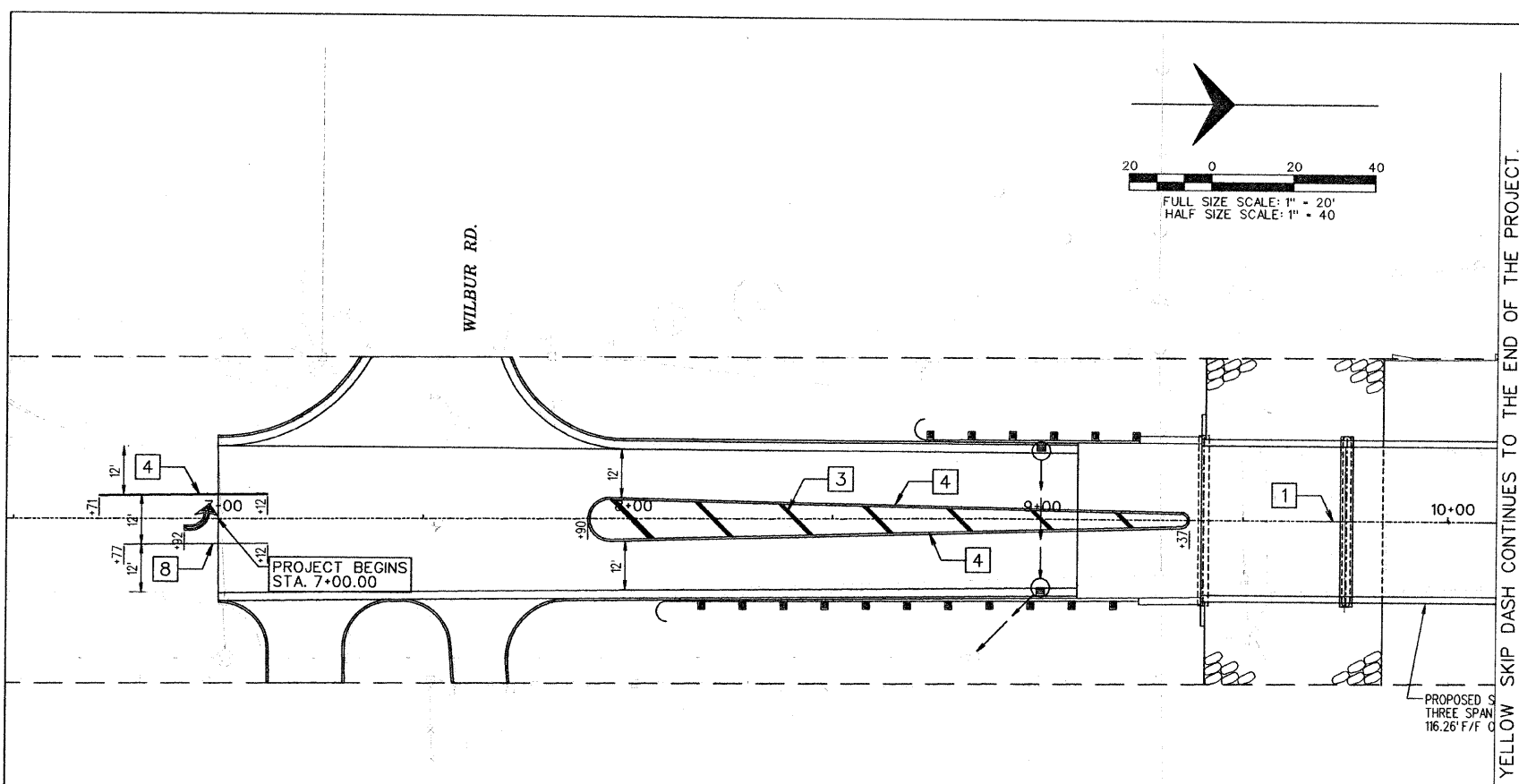
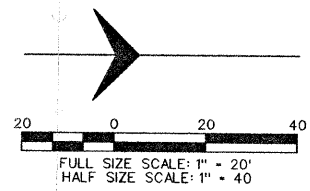


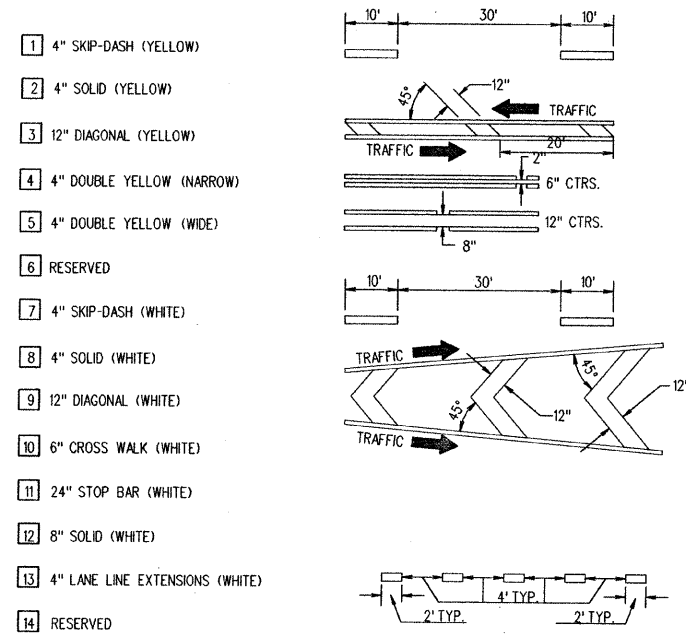
ROUTE NO.	SECTION	COUNTY	TOTAL SHEETS	SHEET NO.
N. LINCOLN AVE.	07-25932-00-BR	CHAMPAIGN	50	38
STA.	TO STA.			
F.H.W.A. REG.	ILLINOIS PROJECT			



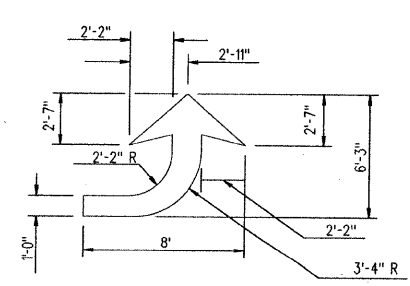
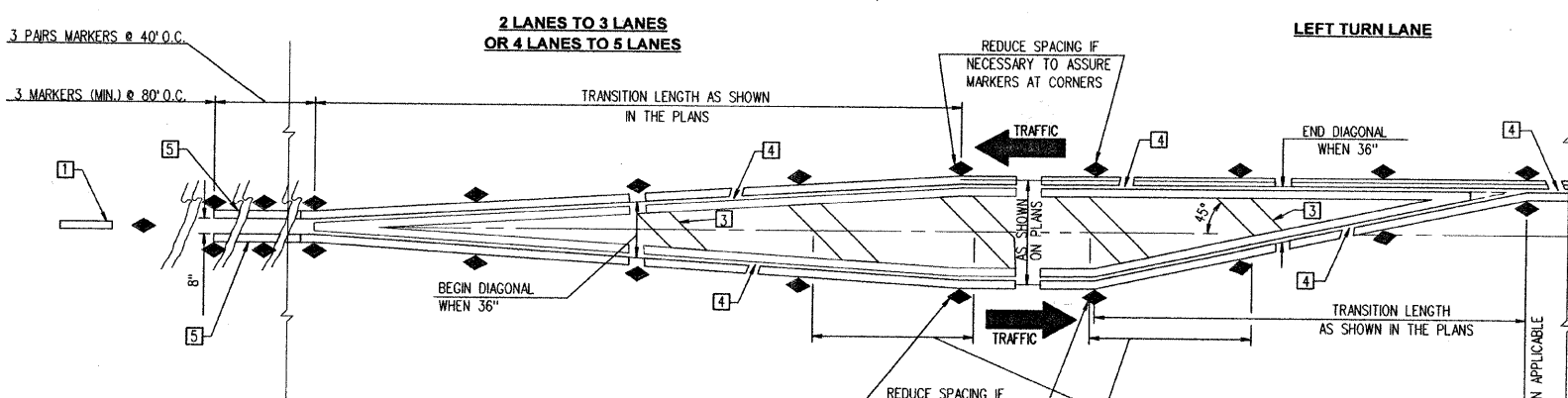
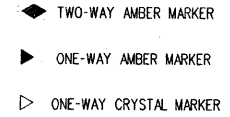
THERMOPLASTIC PAVEMENT MARKINGS					
STATION	TO STATION	DESCRIPTION	L & S SQ FT	LINE 4" FOOT	LINE 12" FOOT
6+71	7+12	NAR CL YEL		41	
6+71	7+12	NAR CL YEL		41	
6+77	7+12	LANE WHT		35	
6+92		LTA WHT	15.6		
7+90	9+37	NAR CL YEL		147	
7+90	9+37	NAR CL YEL		147	
7+90	9+37	NAR CL YEL		147	
7+90	9+37	NAR CL YEL		147	
7+90	9+37	DIAG CL YEL			66
9+37	12+62	SD CL YEL		80	
TOTALS			15.6	785	66

NOTE: "NAR" MEANS NARROW; "CL" MEANS CENTERLINE; "YEL" MEANS YELLOW; "WHT" MEANS WHITE; "LANE" MEANS LANE LINE; "DIAG" MEANS DIAGONAL; "SD" MEANS SKIP-DASH

TYPICAL PAVEMENT MARKING LEGEND



TYPICAL PAVEMENT MARKERS LEGEND



SPECIAL NOTE:
THE ACTUAL MEDIAN CONFIGURATION WILL BE AS SHOWN IN THE PLANS (TAPER OR REVERSE CURVE).

GENERAL NOTES

- WHEN PAVEMENT MARKINGS ARE TO BE PLACED ADJACENT TO MEDIANS, SPECIAL DETAILS WILL BE INCLUDED ELSEWHERE IN THE PLANS.
- SCALE: NONE
- SOME OF THE INFORMATION INCLUDED WITH THIS DETAIL MAY NOT BE APPLICABLE TO THIS IMPROVEMENT.
- PAVEMENT MARKINGS ARE TO BE EXTENDED THROUGH OMISSIONS WHEN APPLICABLE.
- A STRIPING KEY IS AVAILABLE ELSEWHERE AND SHALL BE SHOWN WHERE THE QUANTITIES ARE LISTED.
- FINAL PAVEMENT MARKINGS SHALL BE IN PLACE PRIOR TO PLACING ANY RAISED REFLECTIVE PAVEMENT MARKERS.

TYPICAL APPLICATIONS OF URBAN PAVEMENT MARKINGS AND MARKERS

NOT TO SCALE

PAINT DETAILS
SECTION: 07-25932-00-BR
CHAMPAIGN COUNTY
STATION 10+00