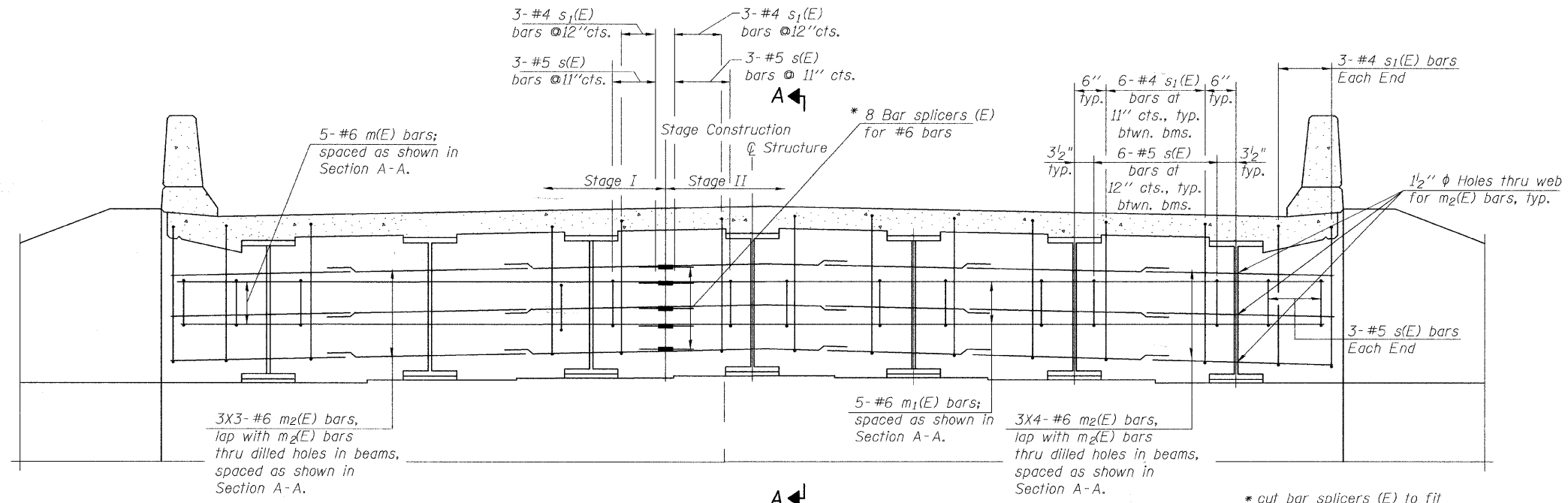


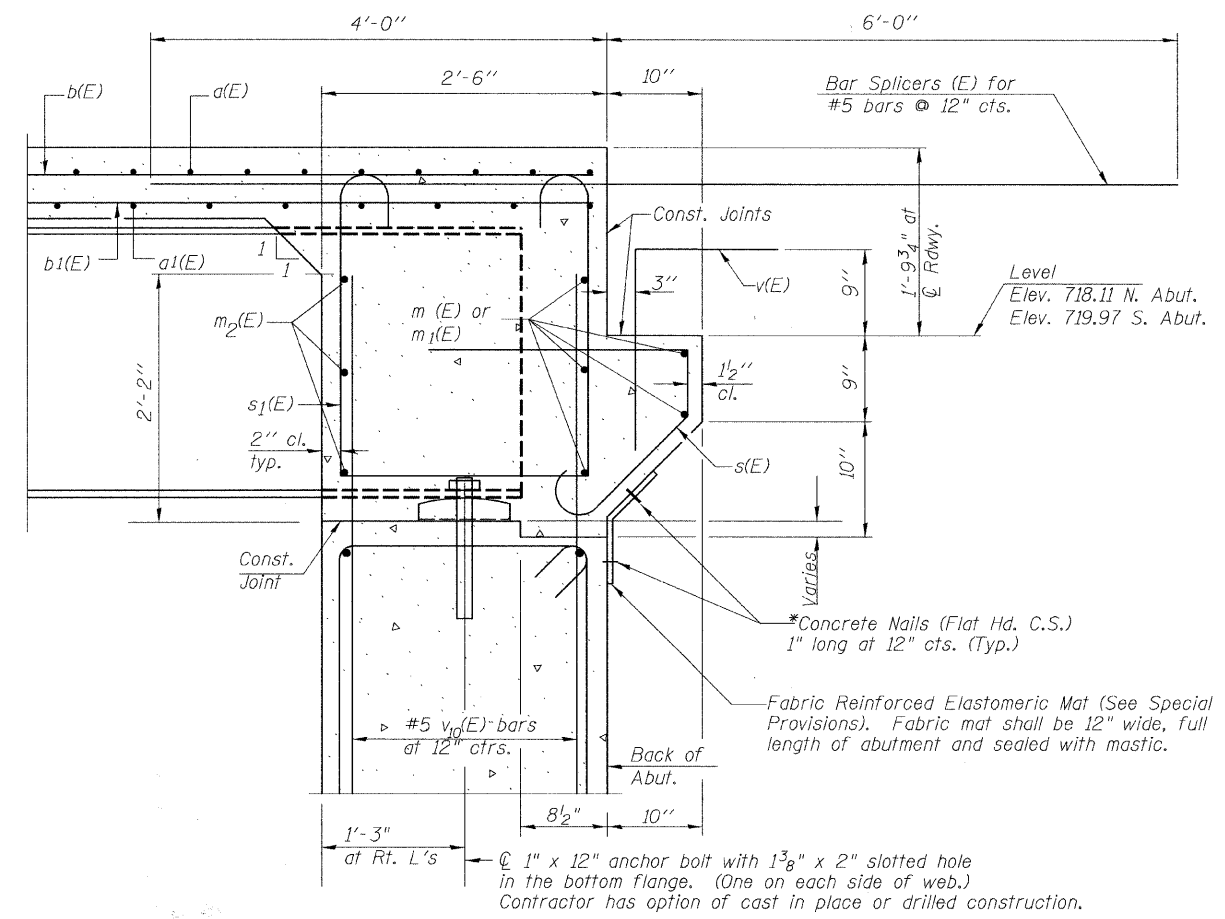
ROUTE NO.	SECTION	COUNTY	TOTAL SHEETS	SHEET NO.
N. LINCOLN AVE.	07-25932-00-BR	CHAMPAIGN	50	24
STA.	TO STA.			
F.H.W.A. REG.	ILLINOIS	PROJECT		



DIAPHRAGM ELEVATION AT ABUTMENT

* cut bar splicers (E) to fit in field as required

Notes:
 Reinforcement bars in diaphragm are billed with superstructure on sheet 10 of 23.
 Concrete in diaphragm is included with Concrete Superstructure on sheet 10 of 23.
 For details of bars s(E) and s1(E) see sheet 10 of 23.

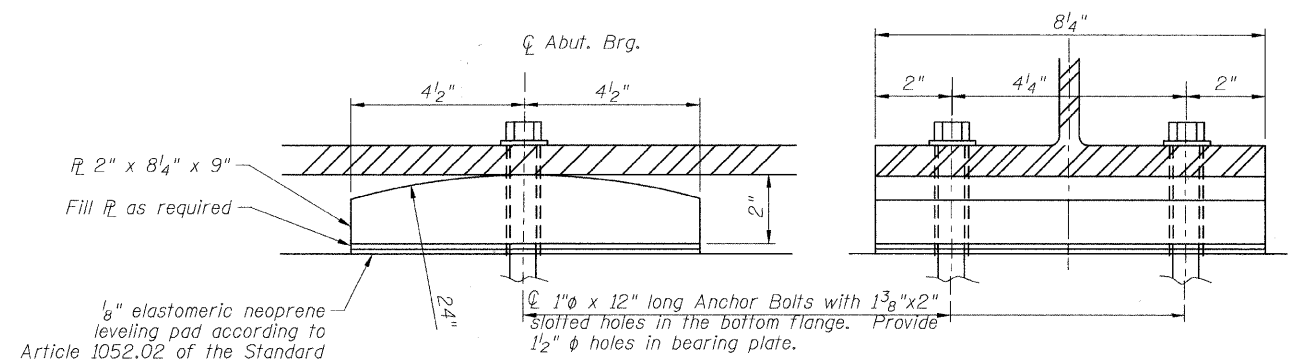


SECTION A-A

Dimensions at right angles to abutment, except as shown.

*Included in the cost of "Concrete Structures".

**Included in the cost of "Porous Granular Embankment".



ELEVATION AT ABUT

SECTION B-B

ROCKER PLATE DETAIL

14 REQUIRED

Rocker Plates shall be AASHTO M270 Gr. 50W

MIN. BAR LAP

#6 bar = 2'-9"

DIAPHRAGM DETAILS
 LINCOLN AVENUE OVER SALINE BRANCH
 FAU 7177 SECTION 07-25932-00-BR
 CHAMPAIGN COUNTY
 STRUCTURE NO. 010-4541

DIAPHRAGM DETAILS
SECTION: 07-25932-00-BR
CHAMPAIGN COUNTY
STATION 10+00