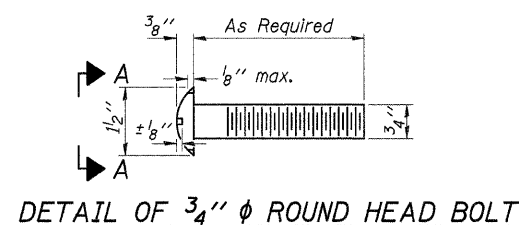
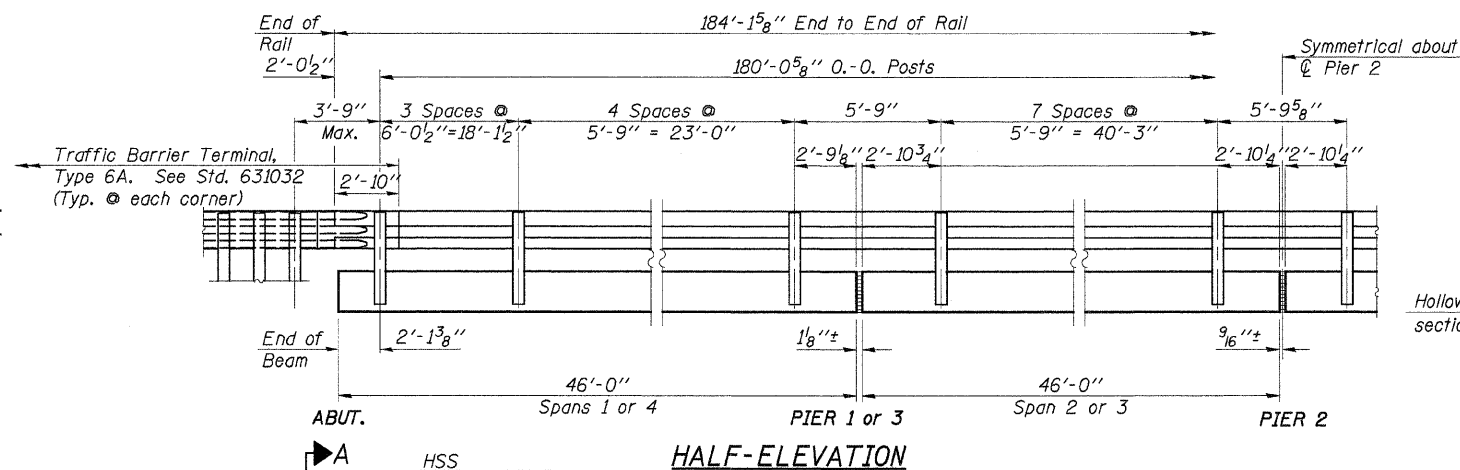


ROUTE NO.	SECTION	COUNTY	TOTAL SHEETS	SHEET NO.
FAS 1045 CH 11	07-00421 -00-BR	WINNEBAGO	18	8

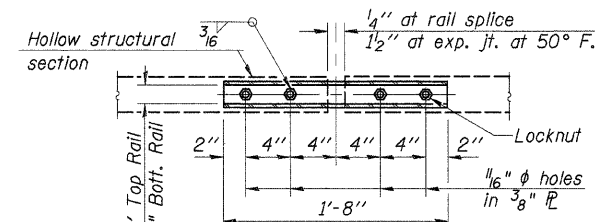
ILLINOIS CONTRACT NO. 85451



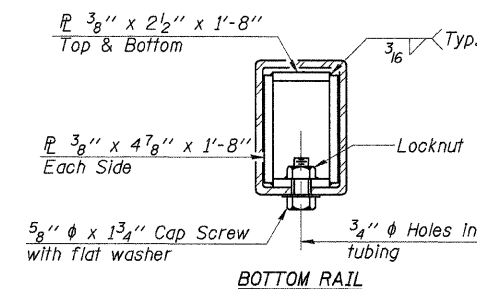
VIEW A-A



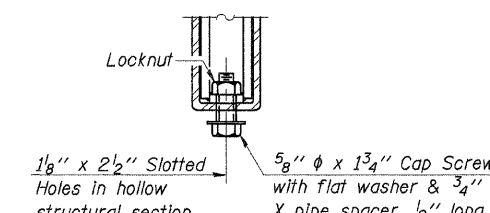
HALF-ELEVATION



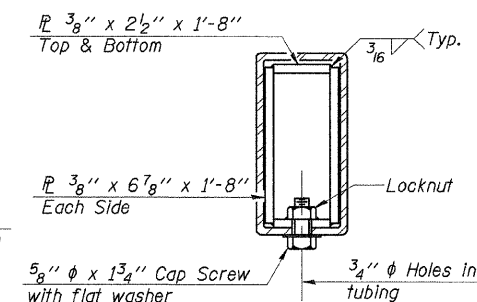
PLAN-BOTT. SPLICE R TYPICAL



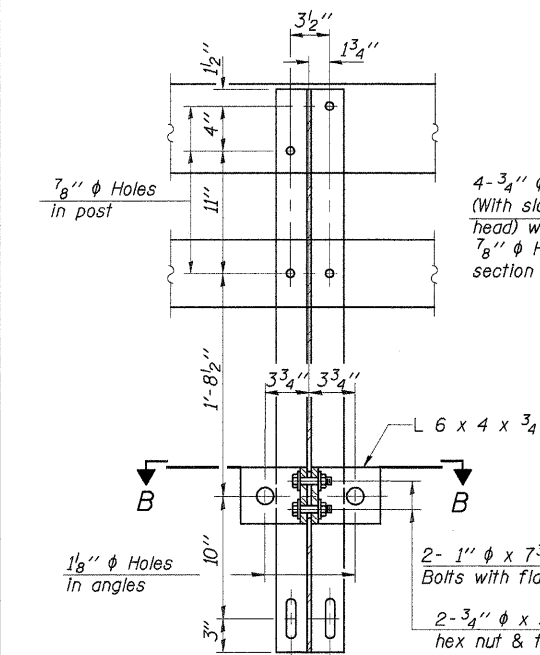
SECTION AT RAIL SPLICE



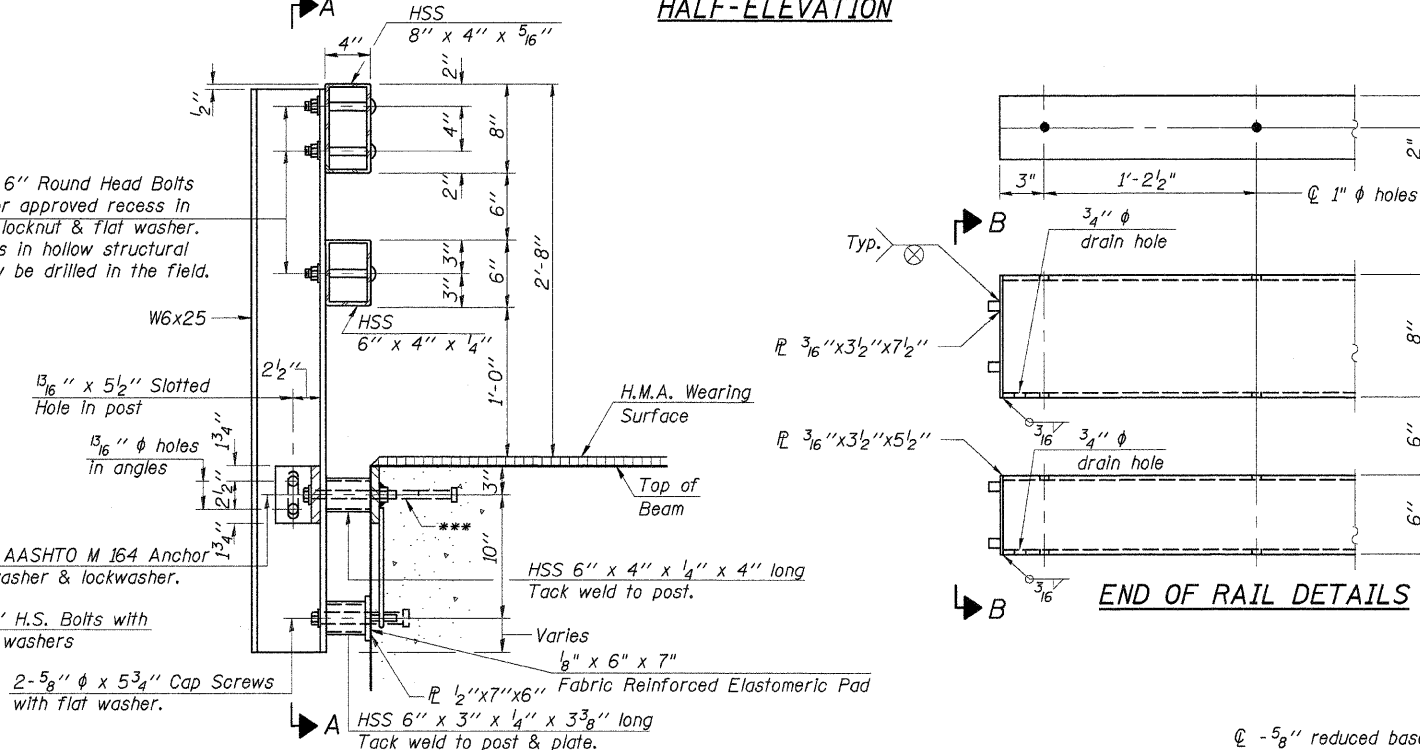
RAIL SPLICE CONNECTION AT EXPANSION JT.



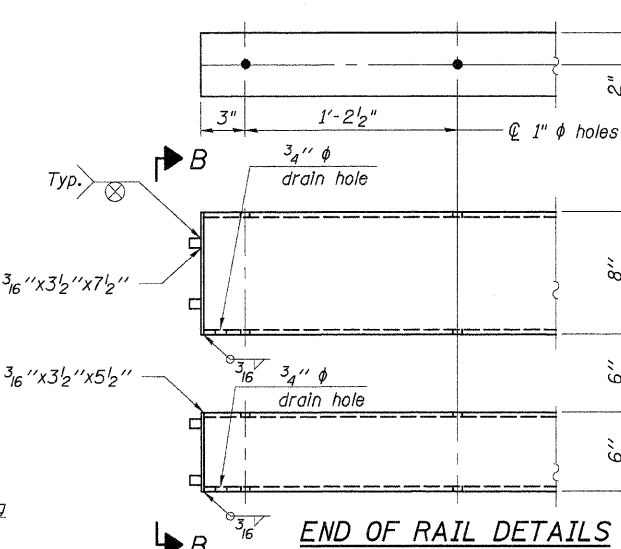
SECTION AT RAIL SPLICE



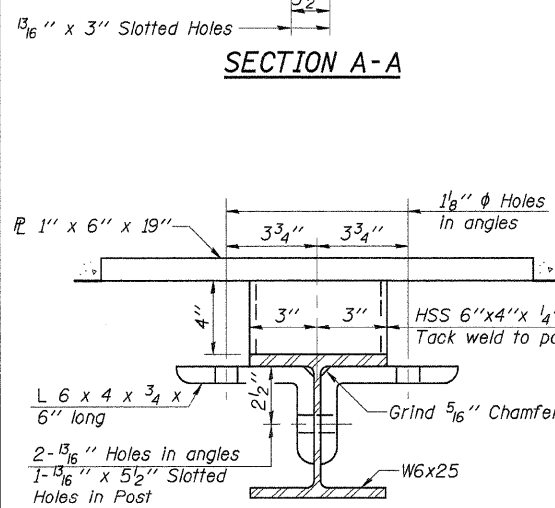
SECTION A-A



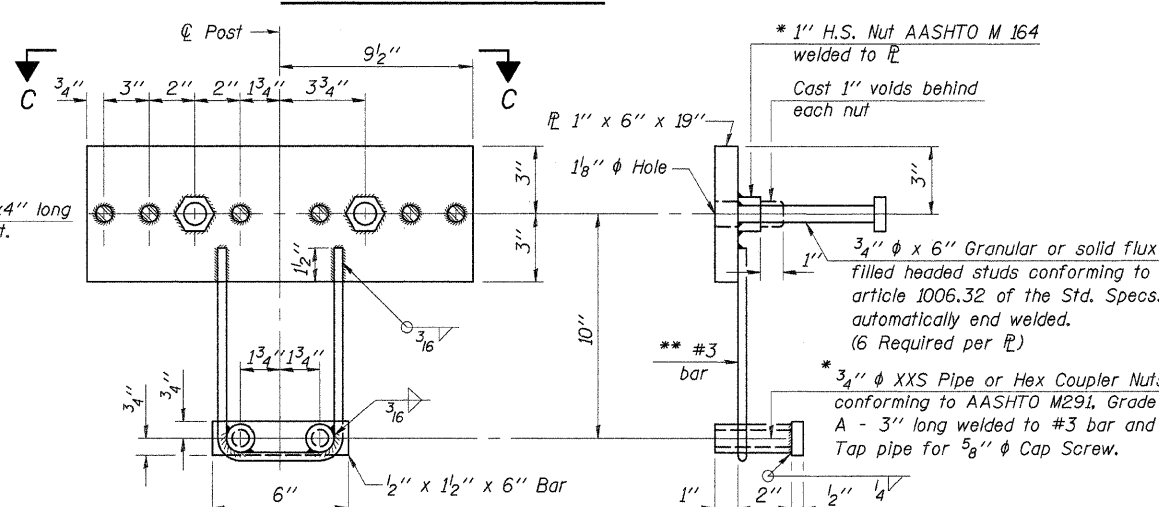
SECTION AT RAIL POST



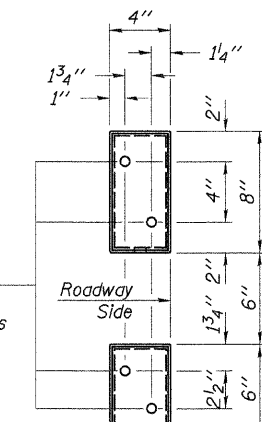
END OF RAIL DETAILS



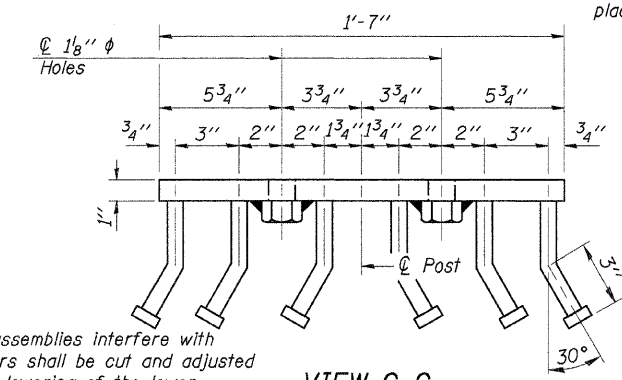
SECTION B-B



ANCHOR DEVICE



VIEW B-B



VIEW C-C

NOTES

All field drilled holes shall be coated with an approved zinc rich paint before erection.
 All steel rail elements shall be galvanized according to Article 509.05 of the Standard Specifications. In addition to the elements specified in Article 509.05, all angles and spacers are to be galvanized in accordance with AASHTO M-111, and all cap screws, washers, and lock washers are to be galvanized in accordance with AASHTO M-232.
 The 3/4" (M20) diameter high strength bolts used to connect the 6x4x3/4" angles to the post shall be tightened in accordance with Article 504.04(F)(2) of the Standard Specifications. The 1" (M24) diameter high strength bolts connecting steel to concrete shall be brought to a snug tight condition and given an additional 1/8 turn. The 5/8" (M16) cap screws in the bottom of the posts shall be brought to a snug tight condition only.
 For multi-span bridges, sufficient 1/2"x6"x1'-4" galvanized steel shims shall be provided to align rail between adjacent spans. Cost included with Steel Railing, Type SM.
 *** The studs for the anchor devices shall be placed below the top reinforcement bars and the outermost longitudinal reinforcement bar shall be placed directly above the studs of the rail post anchor device.

BILL OF MATERIAL

Item	Unit	Quantity
Steel Bridge Rail, Type SM	Foot	369

STEEL BRIDGE RAIL, TYPE SM

SECTION 07-00421-00-BR
 F.A.S. ROUTE 1045 - C.H. 11
 WINNEBAGO COUNTY
 STA. 310+19.92

DESIGNED	A.R.K.
CHECKED	J.A.M.
DRAWN	S.A.P.
CHECKED	J.A.M. & A.R.K.

R-34 9-01-03 (6'-3" Maximum Post Spacing)

* Threaded areas shall be plugged or blocked off during casting of beam. Galvanized after fabrication.

** Whenever the lower insert assemblies interfere with strand locations, the #3 bars shall be cut and adjusted in order to allow raising or lowering of the lower inserts. Maximum adjustment not to exceed 1/2".