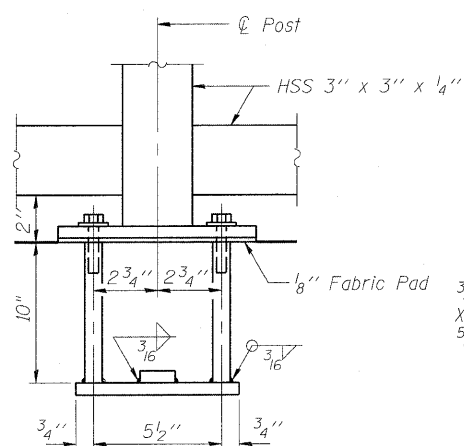
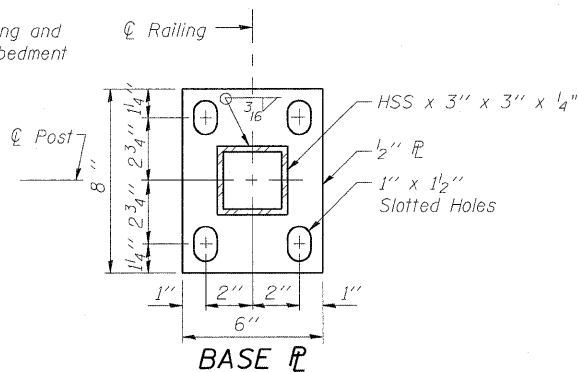
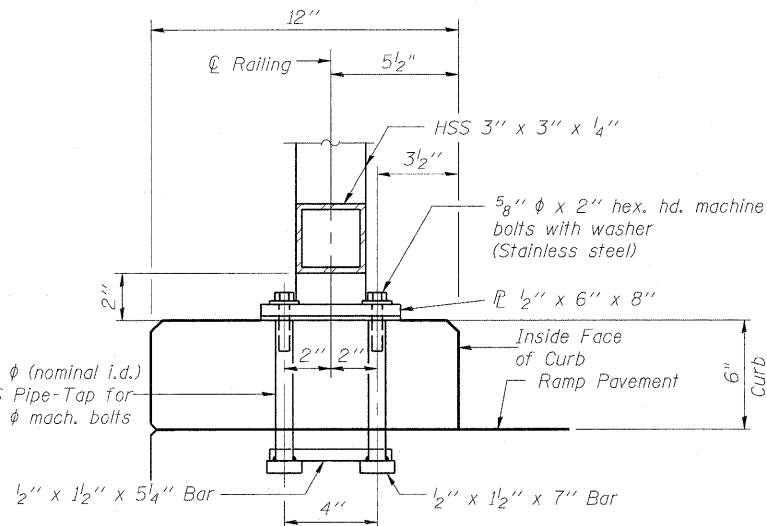


ELEVATION
(Inside Face)

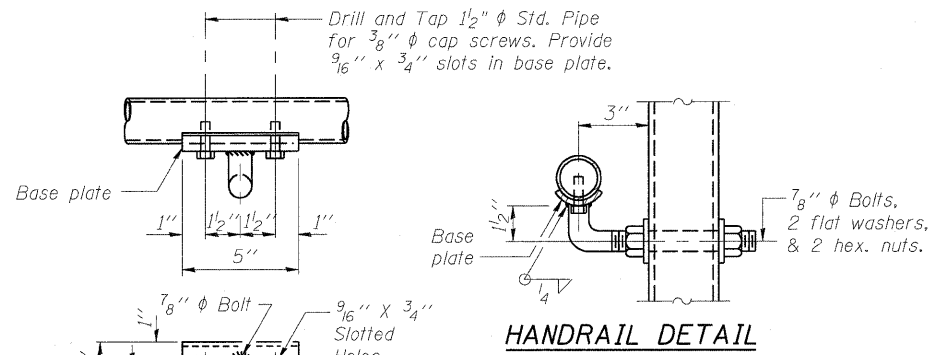
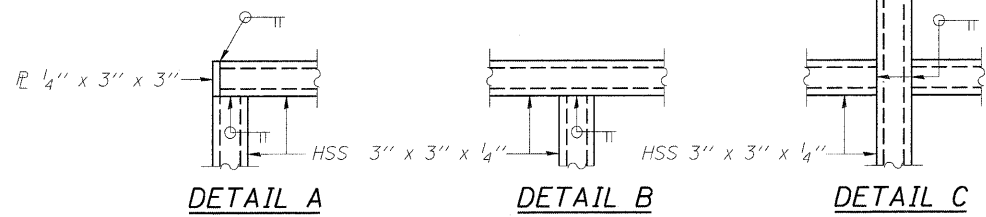


ANCHOR BOLT DETAILS

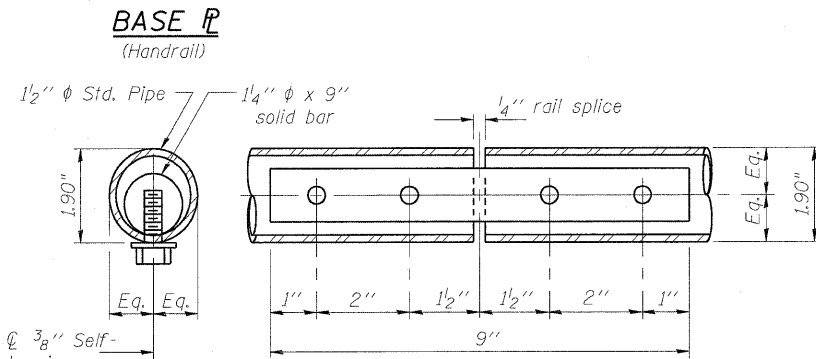
In lieu of the cast-in-place anchor device shown, the Contractor has the option of drilling and setting 3/8" anchor rods according to Article 509.06 of the Standard Specifications. Embedment shall be according to the manufacturer's specifications.



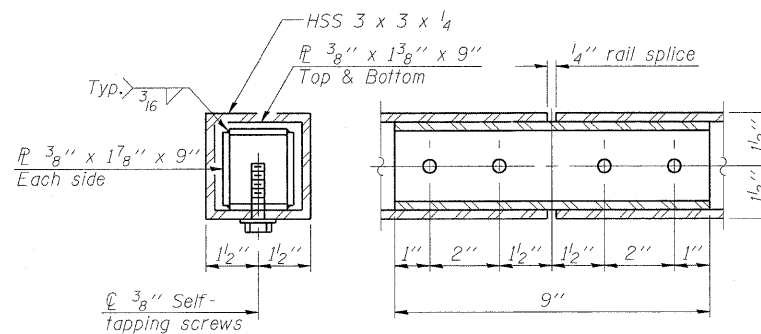
STATE OF ILLINOIS
DEPARTMENT OF TRANSPORTATION



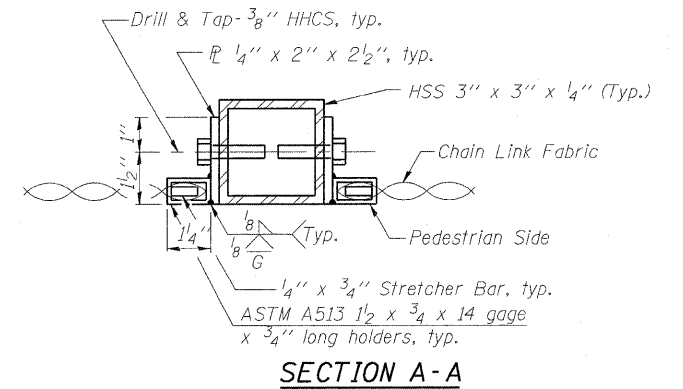
HANDRAIL DETAIL



HANDRAIL SPLICE



RAIL SPLICE



SECTION A-A

NOTES

- All steel rail elements shall be galvanized according to Article 509.05 of the Standard Specifications.
- Railing shall be according to Section 509 of the Standard Specifications, except as noted, and will be paid for at the Contract Unit Price per foot for Pedestrian Railing (Special).
- Space reinforcement to miss anchor rods.

BILL OF MATERIAL

Item	Unit	Quantity
Pedestrian Railing	Foot	84.0

FILE NAME = 082-W229.76C47.S11.RD-03.dgn	USER NAME = bhatta	DESIGNED - DD	REVISED -	STATE OF ILLINOIS DEPARTMENT OF TRANSPORTATION	PEDESTRIAN RAILING STRUCTURE NO. 082-W229	F.A. RTE. 64	SECTION 82-1-1HBR	COUNTY ST. CLAIR	TOTAL SHEETS 93	SHEET NO. 89
PLOT SCALE = 0.1" = 1'-0"	CHECKED - ATB	REVISOR -	REVISOR -			CONTRACT NO. 76C47				
PLOT DATE = 5/1/2009	DATE - 05/01/09	REVISOR -	REVISOR -			ILLINOIS FED. AID PROJECT				
						SCALE:	SHEET NO. OF SHEETS STA. TO STA.			