

Benchmark DAS4: Chiseled "square" Southeast corner of traffic signal foundation Northwest quadrant Baugh Ave. & 15th St. 30.1 ft. Left, Sta. 500+30 (Baugh Ave.) Elev. 415.74

Existing Structure: None

**CURVE PEDBRIG-1**

P.I. Sta. = 22+78.96  
 $\Delta = 89^\circ 59' 24.38''$  (RT)  
 $D = 154^\circ 51' 12.45''$   
 $R = 37.00'$   
 $T = 36.99'$   
 $L = 58.11'$   
 $E = 15.32'$   
 $S.E. = 5.5\%$   
 $S.E. N.C.$   
 P.C. Sta. = 22+41.97  
 P.T. Sta. = 23+00.08

**DESIGN SPECIFICATIONS**

2002 AASHTO Standard Specifications for Highway Bridges

**DESIGN STRESSES**

**FIELD UNITS**

$f'_c = 3,500$  psi  
 $f'_c = 4,500$  psi (Precast Panels)  
 $f_y = 60,000$  psi (Reinforcement)

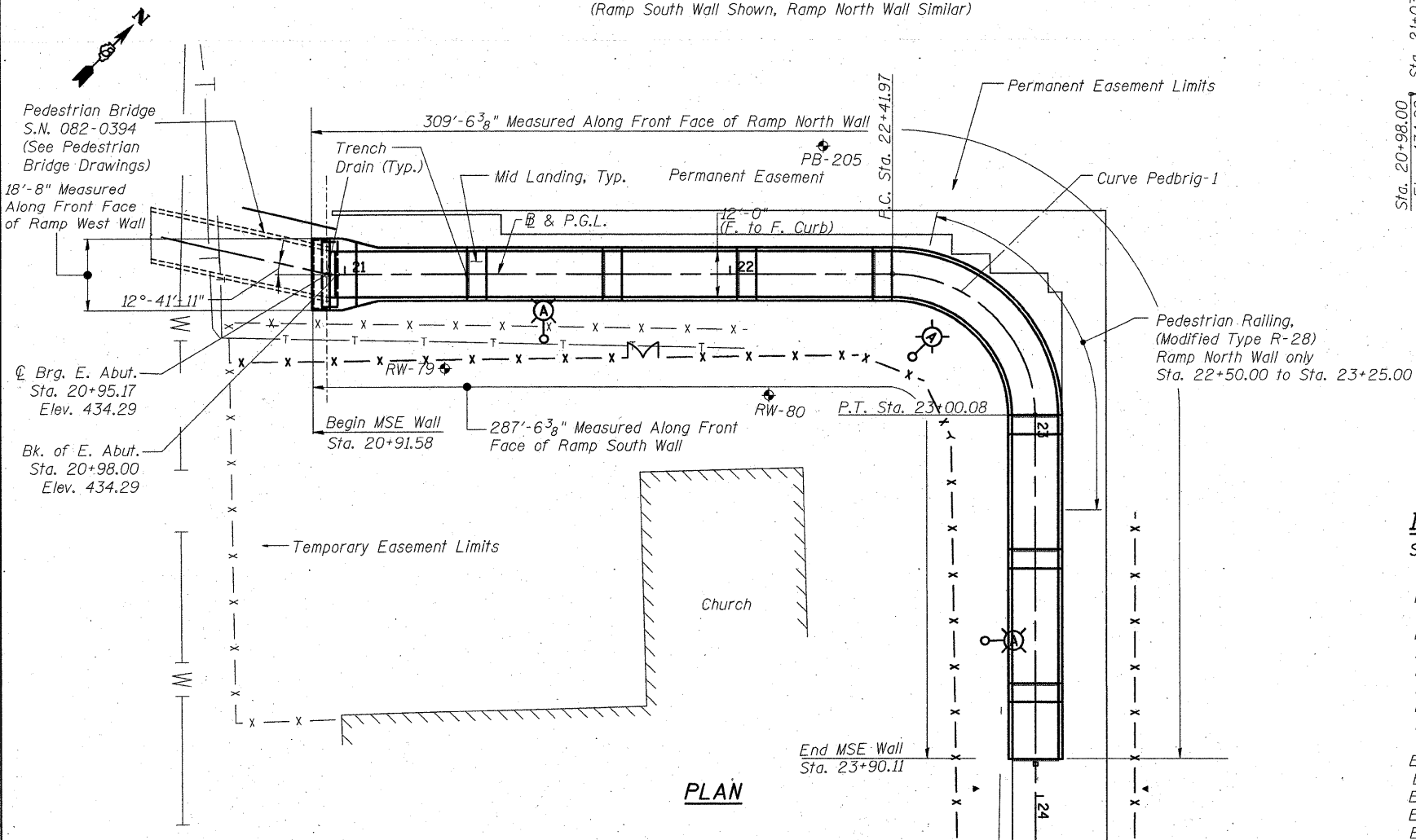
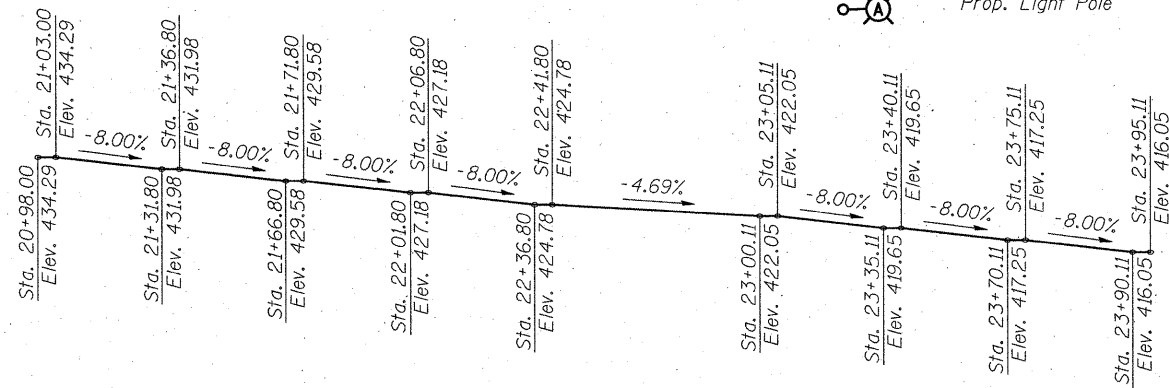
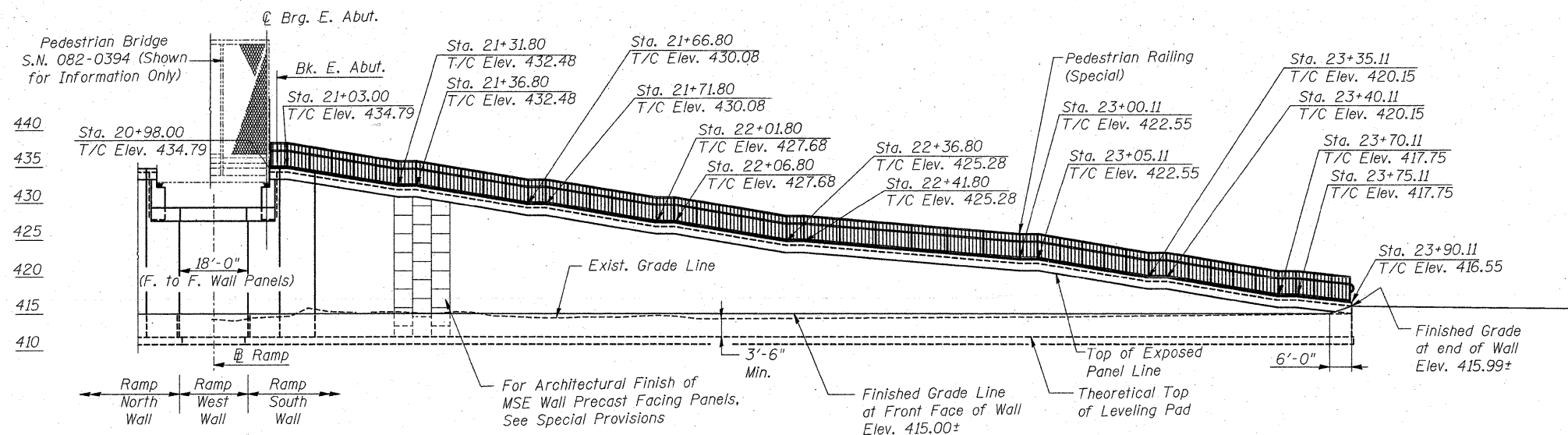
**LOADING H10 &**

**PEDESTRIAN @ 85 P.S.F.**

MSE Wall shall be designed for a min. surcharge of 85 psf.

**LEGEND**

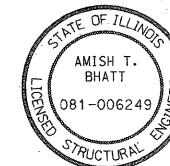
- Soil Boring
- Existing Telephone Line
- Existing Watermain
- Existing Fence
- Permanent Easement
- Temporary Easement
- Prop. Light Pole



**PROFILE GRADE - EAST RAMP**  
 (Unfolded)

**APPROVED**  
 FOR STRUCTURAL ADEQUACY ONLY

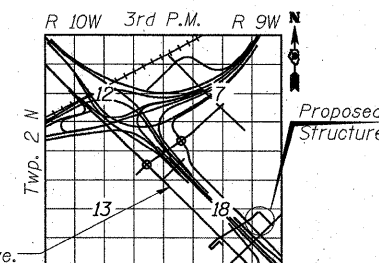
*Relph E. Anderson* (TSP)  
 ENGINEER OF BRIDGES AND STRUCTURES



*Amish Bhatt* 05/05/09  
 AMISH T. BHATT DATE  
 LICENSE EXPIRES 11/30/2010

**INDEX OF SHEETS**

Sht. No.	Description
EA-1	GENERAL PLAN, ELEVATION & INDEX OF SHEETS
EA-2	GENERAL NOTES, BILL OF MATERIAL & WALL SECTION
EA-3	ELEVATION - RAMP SOUTH WALL
EA-4	ELEVATION - RAMP NORTH WALL
EA-5	RAMP PAVEMENT PLAN (1 OF 3)
EA-6	RAMP PAVEMENT PLAN (2 OF 3)
EA-7	RAMP PAVEMENT PLAN (3 OF 3)
EA-8	RAMP PAVEMENT DETAILS
EA-9	PEDESTRIAN RAILING LAYOUT
EA-10	PEDESTRIAN RAIL (SPECIAL) DETAILS
EA-11	PEDESTRIAN RAILING
EA-12	AGGREGATE COLUMN GROUND IMPROVEMENT DETAIL
EA-13	SOIL BORING LOGS (1 OF 3)
EA-14	SOIL BORING LOGS (2 OF 3)
EA-15	SOIL BORING LOGS (3 OF 3)



**LOCATION SKETCH**

FILE NAME = 082-W229-76C47\_S01.GP-01.dgn

USER NAME = bhatta  
 DESIGNED - DEV  
 DRAWN - MK  
 CHECKED - ATB  
 DATE - 05/01/09

REVISED -  
 REVISED -  
 REVISED -  
 REVISED -

**STATE OF ILLINOIS**  
**DEPARTMENT OF TRANSPORTATION**

**GENERAL PLAN, ELEVATION & INDEX OF SHEETS**  
**STRUCTURE NO. 082-W229**

SCALE: SHEET NO. OF SHEETS STA. TO STA.

F.A. RTE.	SECTION	COUNTY	TOTAL SHEETS	SHEET NO.
64	82-1-1HBR	ST. CLAIR	93	79
				CONTRACT NO. 76C47
FED. ROAD DIST. NO.		ILLINOIS FED. AID PROJECT		