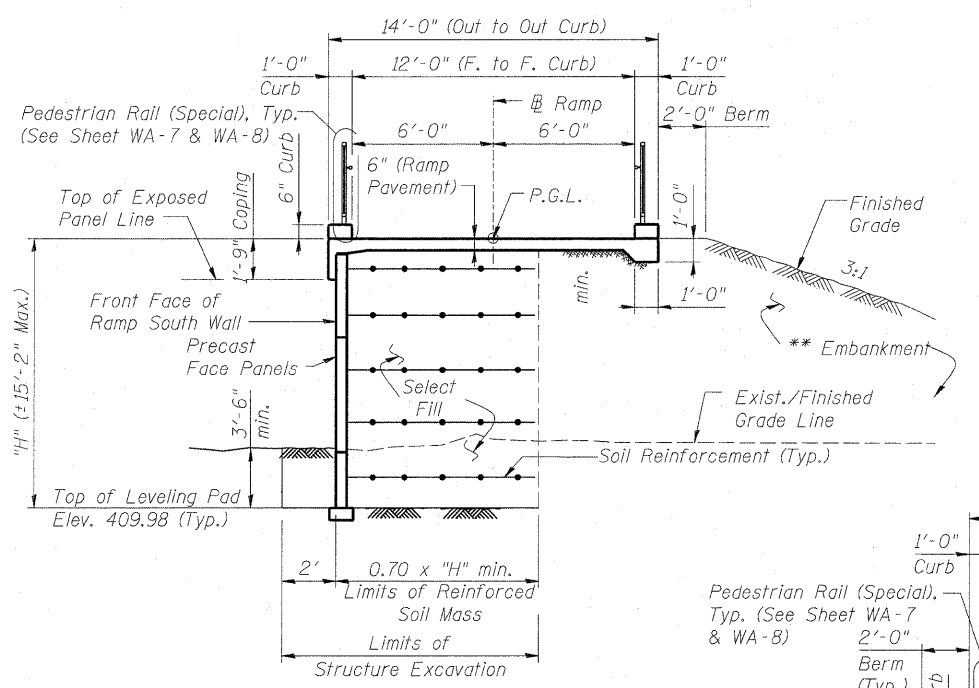
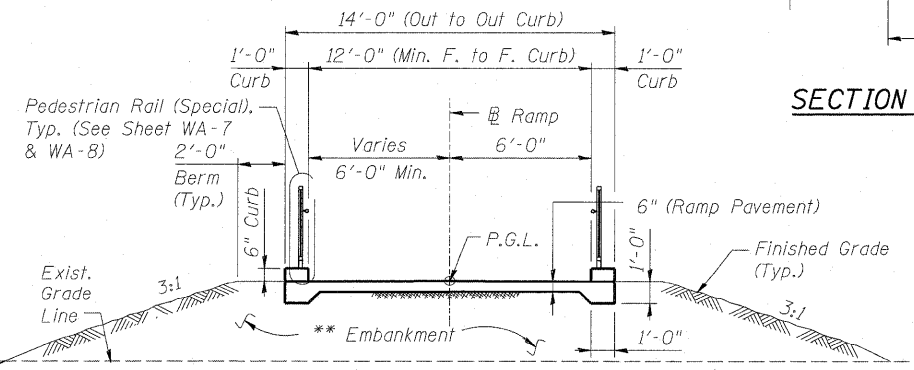


**SECTION A-A**  
(West Wall & East Wall shown  
North Wall & South Wall similar)



**SECTION C-C**



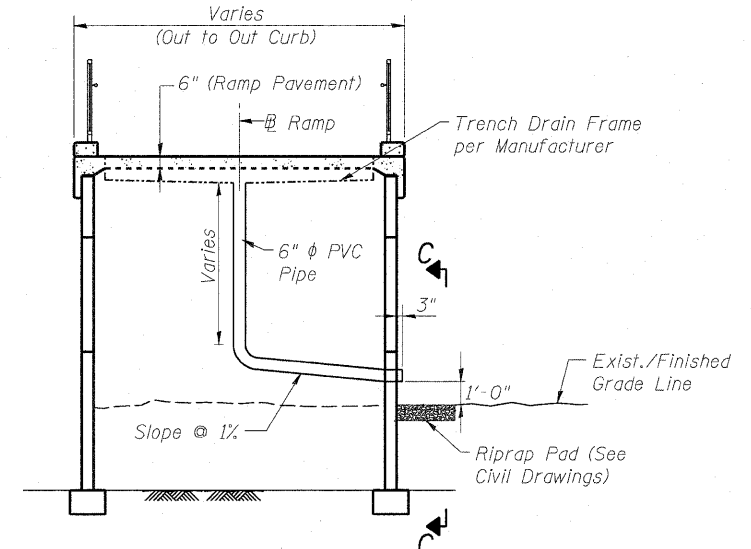
**SECTION B-B**  
(Sta. 10+61.06 to Sta. 11+71.06)

**GENERAL NOTES**

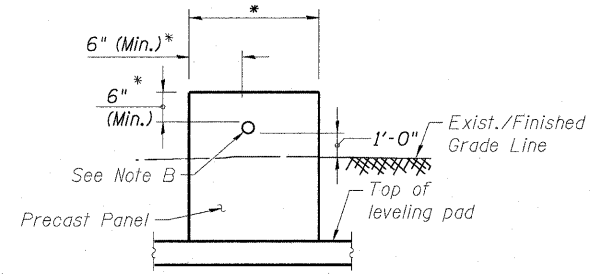
1. Reinforcement bars shall conform to the requirements of ASTM A 706 Gr 60. See Special Provisions.
2. All construction joints shall be bonded.
3. See Special Provision for Mechanically Stabilized Earth Retaining Wall design and construction requirements.
4. Apply Bush Hammer Surface Texture to front face of all MSE wall panels. See special provision for Architectural Form Liner Finish.
5. Protective Coat shall be applied to the entire top surface of the ramp pavement and the top and inside vertical faces of curb.
6. For Aggregate Column Ground Improvement Detail See Sheet WA-9.
7. See Civil Drawings for Drainage Details.

**TOTAL BILL OF MATERIAL**

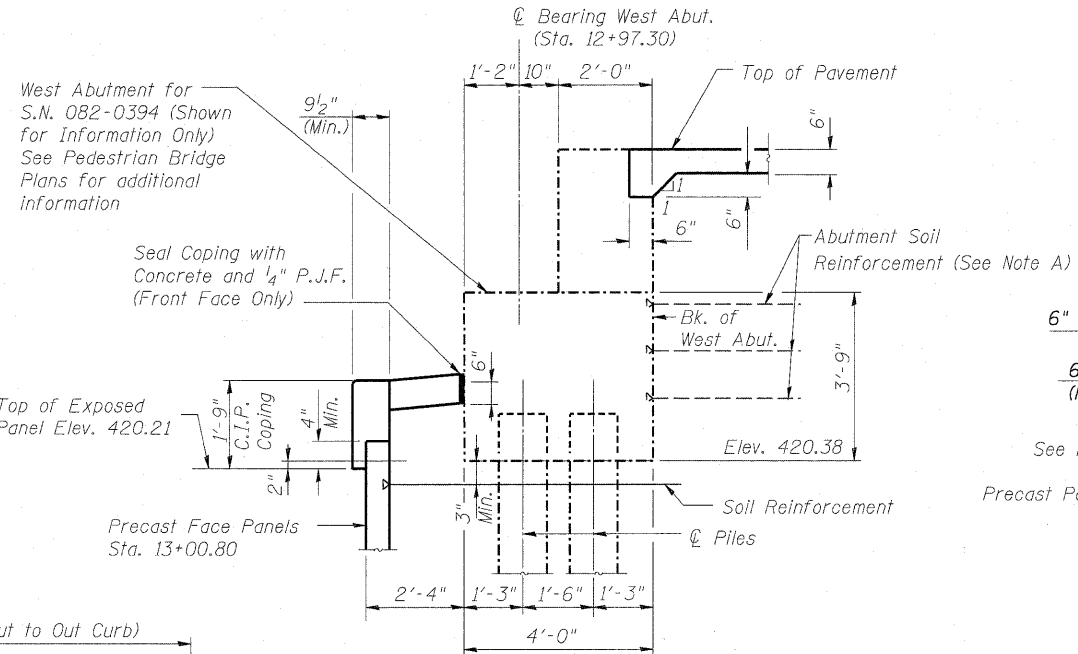
ITEM	UNIT	TOTAL
Structure Excavation	Cu. Yd.	264.6
Concrete Superstructure	Cu. Yd.	118.0
Reinforcement Bars, Epoxy Coated	Pound	15,340
Pedestrian Rail (Special)	Foot	480
Protective Coat	Sq. Yd.	570
Mechanically Stabilized Earth Retaining Wall	Sq. Ft.	2,866
Aggregate Column Ground Improvement	Cu. Yd.	3,525



**TYPICAL SECTION AT TRENCH DRAIN**



**VIEW C-C** \* Wall supplier to determine required dimensions.



**SECTION THRU ABUTMENT**

**Note A**

1. The MSE Wall supplier to design the abutment soil reinforcement to resist a horizontal force of 1.80 kips/ft of abutment.
2. Cost of abutment soil reinforcement shall be included with "Mechanically Stabilized Earth Retaining Wall". Contractor shall be responsible for coordination of work between MSE ramp wall and the pedestrian bridge abutment.

**Note B**

1. Wall supplier to provide opening in the precast panels for 6" diameter PVC pipe. Wrap pipe at panel opening with 1/2" P.J.F. Cost shall be included with "Mechanically Stabilized Earth Retaining Wall".
2. See Civil Drawings for Trench Drain outlet location and details.

**Note C**

Cost of select fill between the soil reinforced wall volume shall be included with "Mechanically Stabilized Earth Retaining Wall".

\*\* Quantity of embankment outside limits of Reinforced Soil Mass is included in the civil quantities.

FILE NAME = 082-W228.76C47_S02_CN-01.dgn	USER NAME = bhatta	DESIGNED - DEV	REVISOR -	<b>STATE OF ILLINOIS DEPARTMENT OF TRANSPORTATION</b>	<b>GENERAL NOTES, BILL OF MATERIAL &amp; WALL SECTIONS STRUCTURE NO. 082-W228</b>	F.A. RTE. 64	SECTION 82-1-1HBR	COUNTY ST. CLAIR	TOTAL SHEETS 93	SHEET NO. 68
PLOT SCALE = 1/4" = 1' / IN.	CHECKED - ATB	DRAWN - MK	REVISOR -			CONTRACT NO. 76C47				
PLOT DATE = 6/15/2009	DATE - 05/01/09	CHECKED - ATB	REVISOR -			FED. ROAD DIST. NO. ILLINOIS FED. AID PROJECT				
		DATE - 05/01/09	REVISOR -			SCALE:	SHEET NO. OF SHEETS STA. TO STA.			