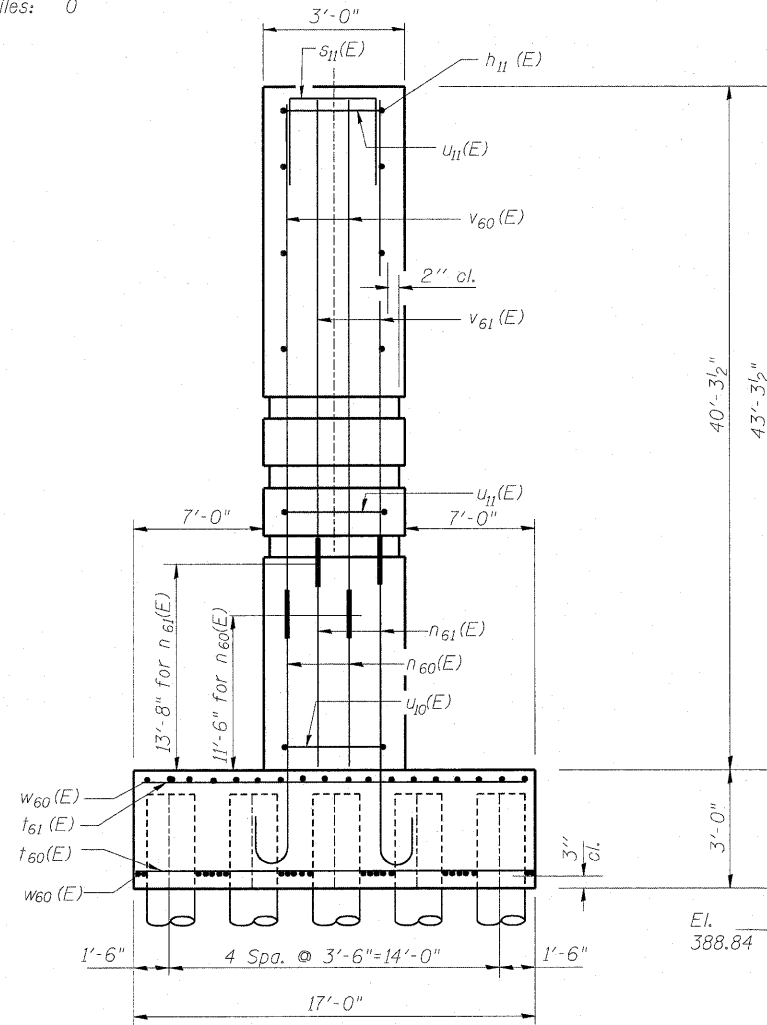


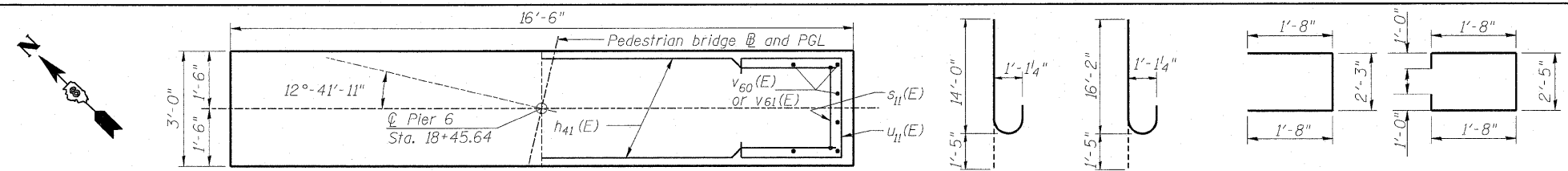
**PILE DATA - PIER 6**

Type: Metal Shell 12" dia. x 1/4" wall with Pile Shoes  
 Nominal Required Bearing: 330 kips  
 Allowable Resistance Available: 110 kips  
 Estimated Pile Length: 53 ft  
 Number of Production Piles: 25  
 Number of Test Piles: 0

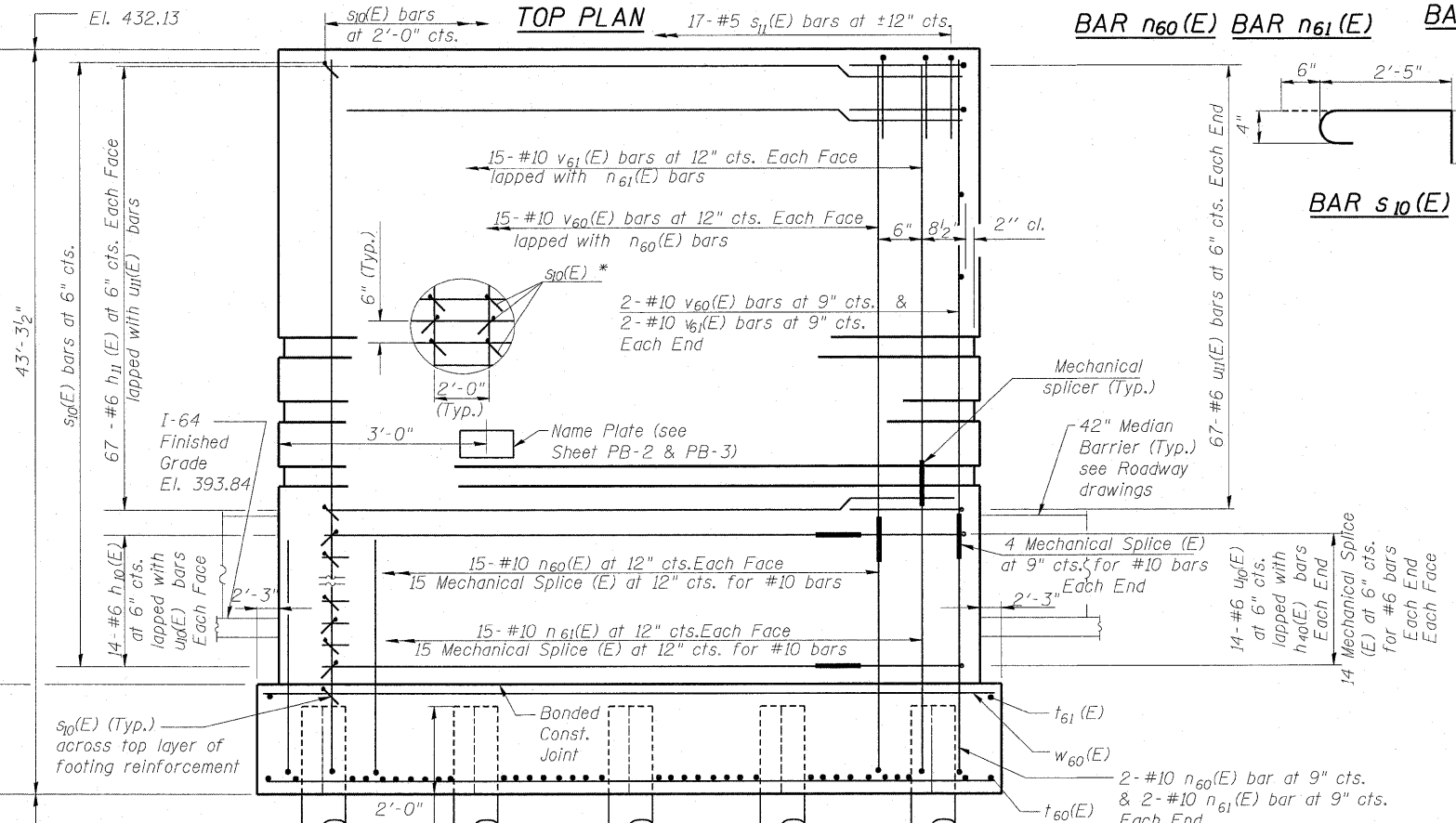


**END VIEW**  
N.T.S.

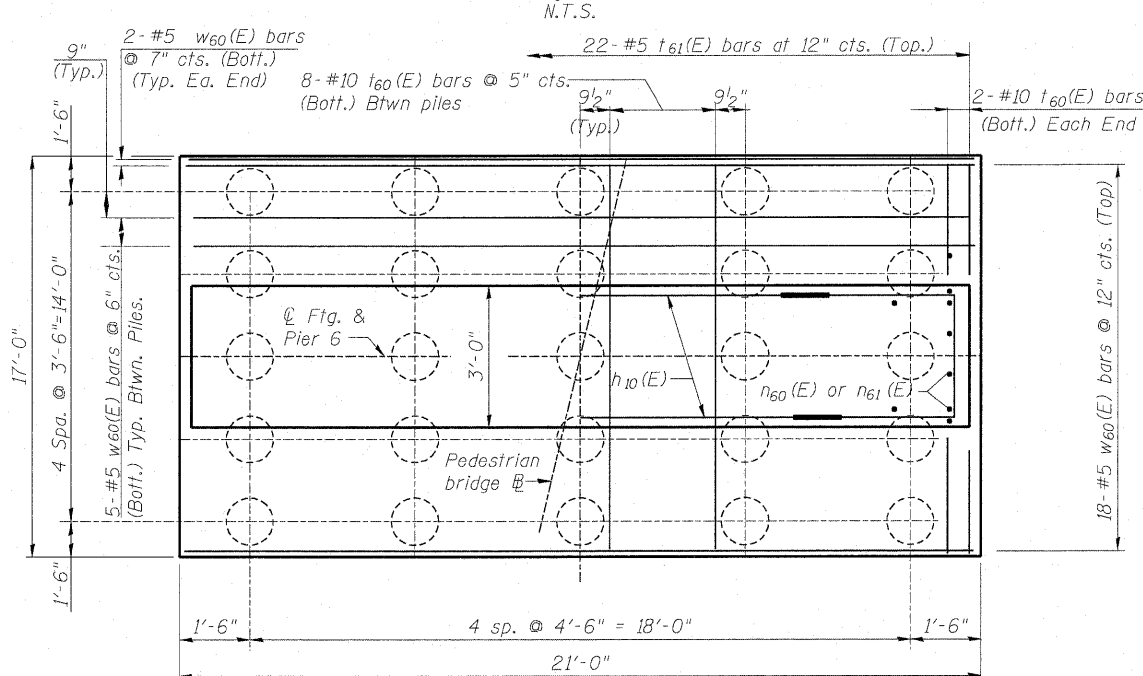
\* Arrange  $s_{10}(E)$  bars in a grid pattern at intersection of  $n_{60}(E)$  or  $n_{61}(E)$  or  $v_{60}(E)$  or  $v_{61}(E)$  and  $h_{10}(E)$  or  $h_{11}(E)$  or  $u_{10}(E)$  or  $u_{11}(E)$ . Orientation of 180° hook shall also be alternate.



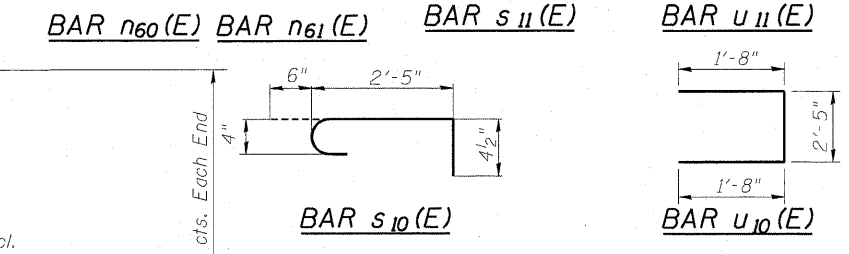
**TOP PLAN**



**ELEVATION - PIER 6**  
(Looking East)  
N.T.S.



**FOOTING PLAN**  
N.T.S.



**BILL OF MATERIAL**

Bar	No.	Size	Length	Shape
$h_{10}(E)$	28	#6	12'- 7"	—
$h_{11}(E)$	134	#6	15'- 11"	—
$n_{60}(E)$	34	#10	15'- 5"	U
$n_{61}(E)$	34	#10	17'- 7"	U
$s_{10}(E)$	656	#4	3'- 3 1/2"	L
$s_{11}(E)$	17	#5	5'- 7"	U
$t_{60}(E)$	36	#10	16'- 8"	—
$t_{61}(E)$	22	#5	16'- 8"	—
$u_{10}(E)$	28	#6	5'- 9"	U
$u_{11}(E)$	134	#6	7'- 9"	U
$v_{60}(E)$	34	#10	28'- 7"	—
$v_{61}(E)$	34	#10	26'- 5"	—
$w_{60}(E)$	42	#5	20'- 8"	—
Structure Excavation		Cu. Yd.	97.2	
Concrete Structures		Cu. Yd.	114	
Reinforcement Bars, Epoxy Coated		Pound	23,820	
Furnishing Metal Pile Shells 12" x 0.250"		Foot	1,375	
Driving Piles		Foot	1,325	
Pile Shoes		Each	25	
Concrete Sealer		Sq. Ft.	50	
Mechanical Sandblast Finish		Sq. Ft.	1,272	
Concrete Surface Color Treatment		Sq. Ft.	66	
Mechanical Splice		Each	124	

**NOTES:**

- All edges shall have standard 3/4" chamfers except as noted.
- Space reinforcement in cap to miss anchor bolts.
- For Anchor bolt details see Sheet PB-5. Truss fabricator shall determine size & location of anchor bolts. Cost included with Pedestrian Truss Superstructure.
- See Sheet PB-18 for urban design guideline.

FILE NAME = 082-0394_76C47_S16-PIER-06.dgn	USER NAME = bhata	DESIGNED - DEV	REVISOR -	<b>STATE OF ILLINOIS DEPARTMENT OF TRANSPORTATION</b>	<b>PIER 6 STRUCTURE NO. 082-0394</b>	F.A. RTE. 64	SECTION 82-1-1HBR	COUNTY ST. CLAIR	TOTAL SHEETS 93	SHEET NO. 57
PLOT SCALE = 24" = 1' / IN.	CHECKED - ATB	REVISOR -	SCALE:			SHEET NO. OF SHEETS STA. TO STA.	FED. ROAD DIST. NO. [ILLINOIS] FED. AID PROJECT			
PLOT DATE = 6/15/2009	DATE - 05/01/09	REVISOR -					CONTRACT NO. 76C47			